

Commune plurium Confessorum non Pontificum
Commune Sanctorum pro aliquibus locis

Introit

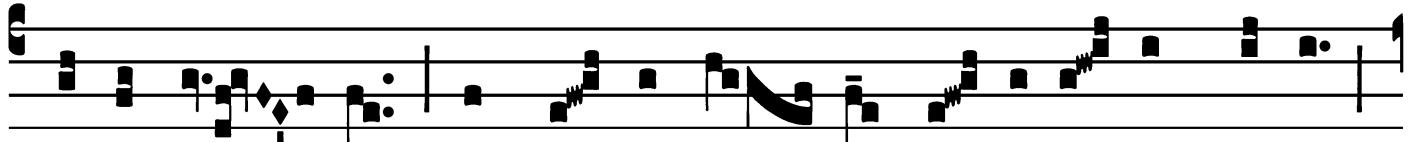
Intr.

3.

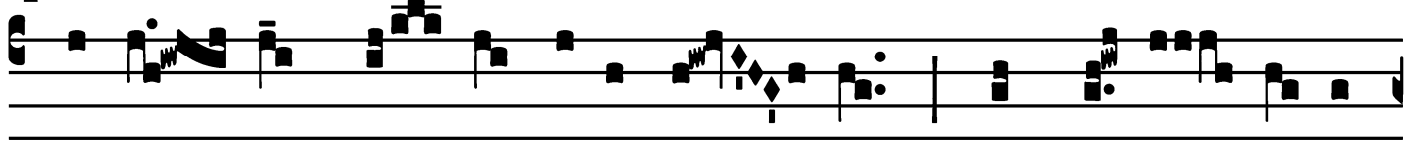
C



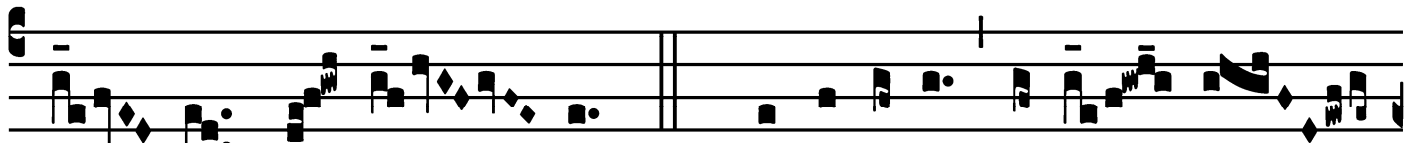
Onfi- te-án-tur tí-bi, * Dó- mi-ne, ómni- a ó-



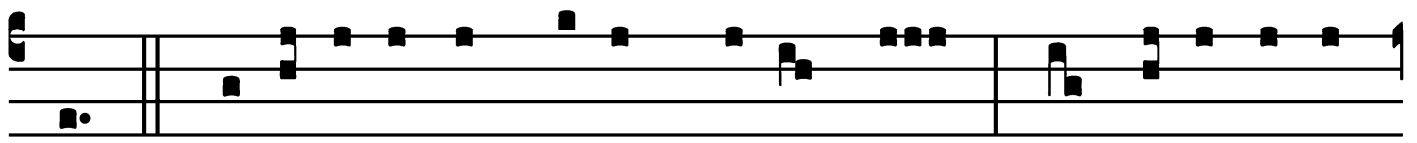
pe-ra tú- a, et Sáncti tú- i be- nedí- cant tí-bi :



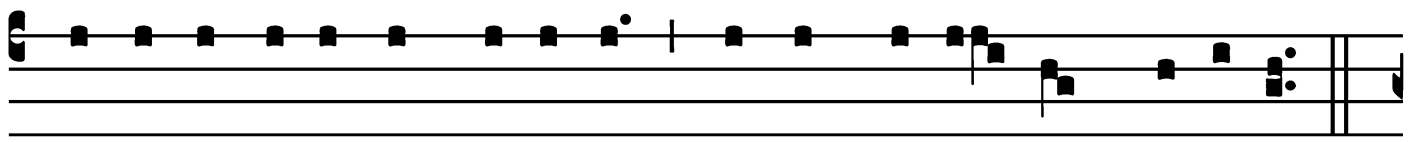
gló-ri- am ré- gni tú- i dí- cent, et pot-én- ti- am



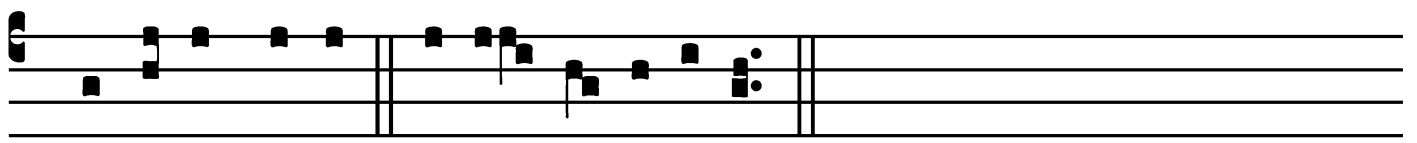
tú- am loquén- tur. *T. P.* Alle-lú-ia, alle- lú-



ia. *Ps.* Exaltábo te, Dé- us mé- us, rex : * et bene- dí- cam



nómi- ni tú- o in sáecu- lum, et in sáecu- lum sáecu- li.



Gló-ri- a Pátri. E u o u a e.

Commune plurium Confessorum non Pontificum

Gradual

Grad.

1.

D

I-lí-gi-te * Dómi-num

ómnes Sán-cti

é-jus,

quó-ni-am ve-ri-tá-

tem requí-ret

Dómi-nus,

et retrí-bu-et abundán-ter

fa-ci-én-ti-bus supérbi-am.

∇. Vi-rí-li-ter

á-gi-te,

et conforté-

tur cor vé-

strum,

ómnes qui spe-rá-tis * in Dómi-no.

Commune plurium Confessorum non Pontificum

Alleluia

3.
A Lle- lú- ia. * *ij.*

∇. Spé- rent in te qui novérunt nómen

tú- um : quó- ni- am non de-re-li-

quí- sti quærén- tes te, * Dó- mine.

Commune plurium Confessorum non Pontificum

Second Alleluia

(In Paschal Time)

4.
A Lle-lú- ia. * *V.* Jú-sti confi-te-
bún- tur nómi- ni tú- o, Dómi- ne : et ha-
bi- tábunt ré- cti cum vúl-
tu * tú- o.

Commune plurium Confessorum non Pontificum

Tract

(Page 1 of 2)

Tract.

8.

G

Ustá-te

* et vi-dé-

te quó-

ni- am su-á- vis est

Dómi-nus :

be-á-tus

vir

qui spé- rat in é-

o.

∞. Timé- te Dóminum, ómnes Sáncti

é-

jus : quóni- am non est in-ópi- a timénti-

bus é- um.

∞. Dí-vi-tes egu- é-

runt

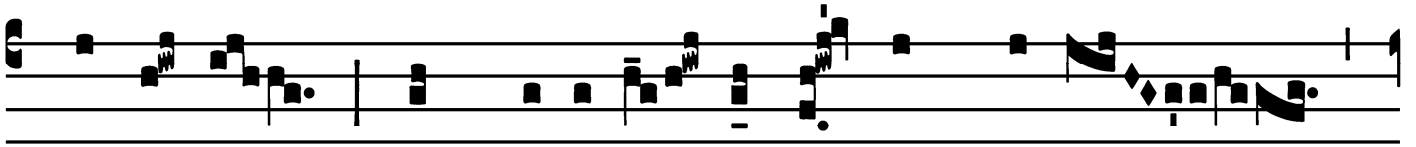
et esu- ri- é- runt :

inqui- rén-tes autem

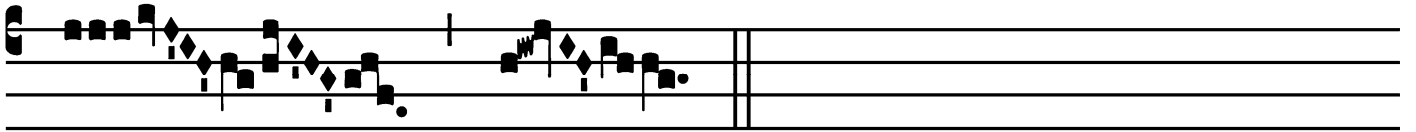
Commune plurium Confessorum non Pontificum

Tract

(Page 2 of 2)



Dómi-num non minu-én- tur ómni * bóno.



Commune plurium Confessorum non Pontificum

Offertory

Offert.

1.

U

Usti * epu-lén- tur, et exsúl- tent

in conspé- ctu Dé- i, et

de- le-ctén- tur in læ- tí- ti- a.

T. P. Al- le- lú-ia.

Commune plurium Confessorum non Pontificum

Communion

Comm. 1.

B E-á-ti sérví íl-li, * quos, cum véne-rit Dó-mi-
nus, invéne-rit vi-gi-lán-tes; amen dí-co vóbis, quod
præcínget se, et fá-ci-et íllos discúmbe-re, et trãs-
i-ens mi-nistrá-bit íl-lis. *T.P.* Alle-
lú-ia.

