

Missa Votiva de S. Catharinæ Fliscæ Adurnæ, Viduæ  
Proprium Sanctorum pro aliquibus locis

## Introit

Intr. 4.



**S** I-tí-vit \* ánima mé- a ad Dé- um fór-tem  
ví- vum : quando véni- am, et appa-ré- bo ante  
fá- ci- em Dé- i? *T.P.* Alle-lú- ia, alle-  
lú- ia. *Ps.* Quemádmódum de-síde-rat cérvus ad fón-tes  
aquá-rum, \* i- ta de-síde-rat ánima mé- a ad te Dé- us.  
Gló- ri- a Pátri. E u o u a e.

Missa Votiva de S. Catharinæ Fliscæ Adurnæ, Viduæ

*Gradual*

Grad.

5.

**D**

Iffú-sa est \* grá-ti-a in lá-bi-is

tú-is : pro-ptér-e-a bene-

dí-xit te Dé-us in æ-tér-num.

∇. Propter ve-ri-tá-tem, et

mansu-e-túdinem, et ju-

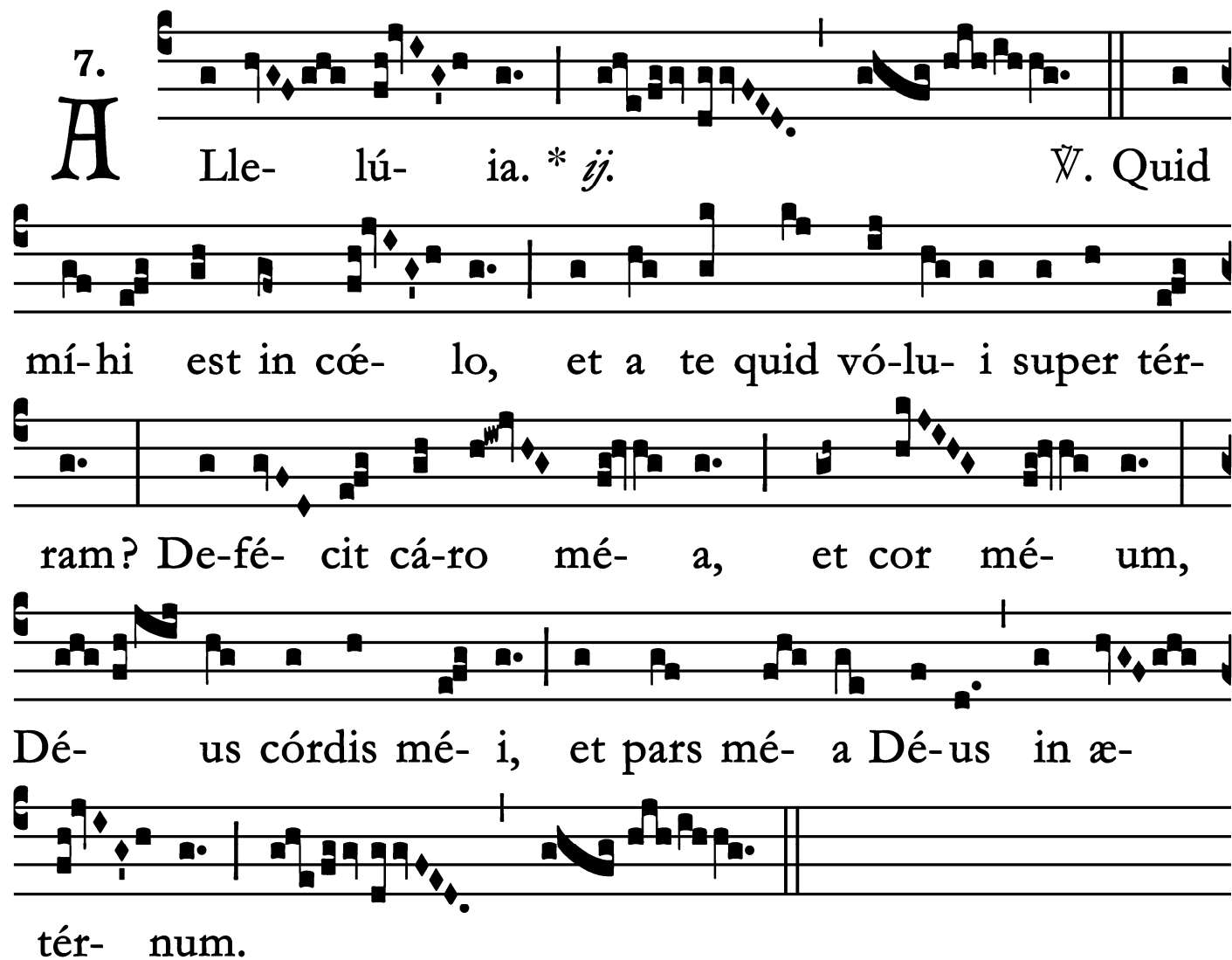
stí-ti-am : et dedúcet te mi-ra-

bí-li-ter \* déx-te-ra tú-a.

Missa Votiva de S. Catharinæ Fliscæ Adurnæ, Viduæ

*Alleluia*

7.  
**A** Lle- lú- ia. \* *ij.*      *Ÿ.* Quid  
mí-hi est in có- lo, et a te quid vó-lu- i super tér-  
ram? De-fé- cit cá-ro mé- a, et cor mé- um,  
Dé- us córdis mé- i, et pars mé- a Dé-us in æ-  
tér- num.

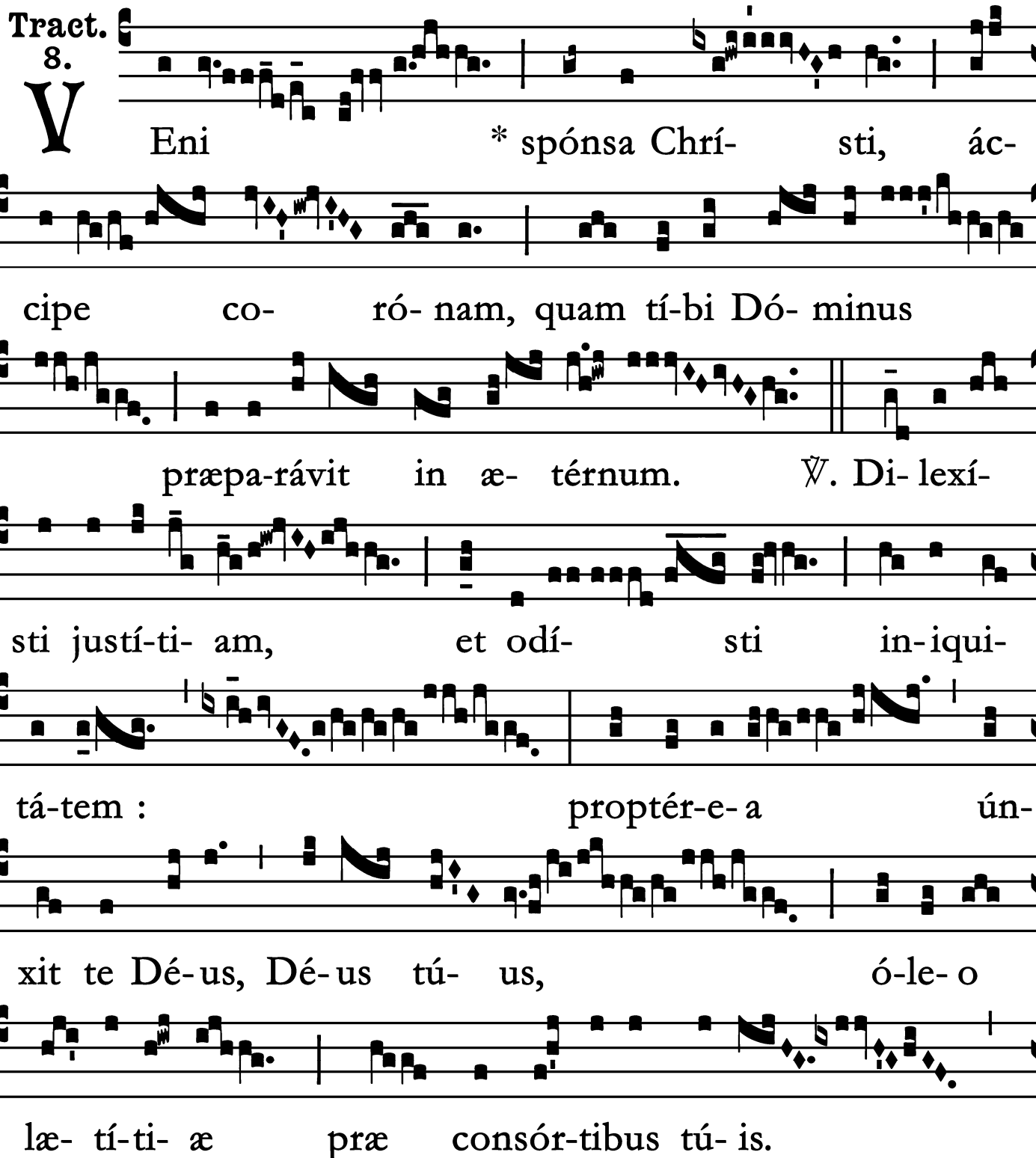


Missa Votiva de S. Catharinæ Fliscæ Adurnæ, Viduæ

*Tract*

(After Septuagesima – Page 1 of 2)

Tract.  
8.

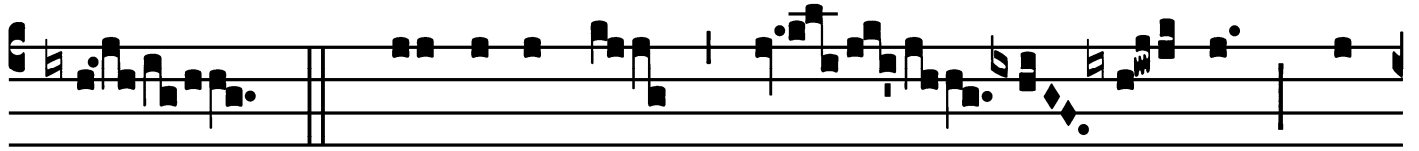


V Eni \* spónsa Chrí- sti, ác-  
cipe co- ró- nam, quam tí- bi Dó- minus  
præpa- rávit in æ- térum. V̄. Di- lexí-  
sti justí- ti- am, et odí- sti in- iqui-  
tá- tem : proptér- e- a ún-  
xit te Dé- us, Dé- us tú- us, ó- le- o  
læ- tí- ti- æ præ consór- tibus tú- is.

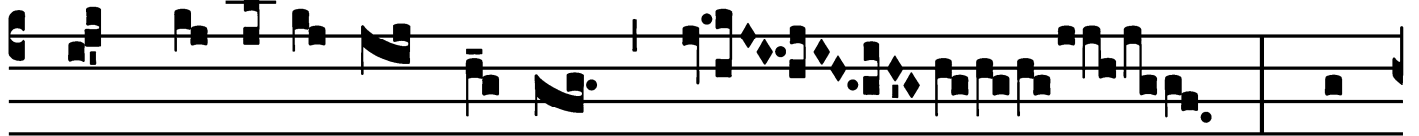
Missa Votiva de S. Catharinæ Fliscæ Adurnæ, Viduæ

*Tract*

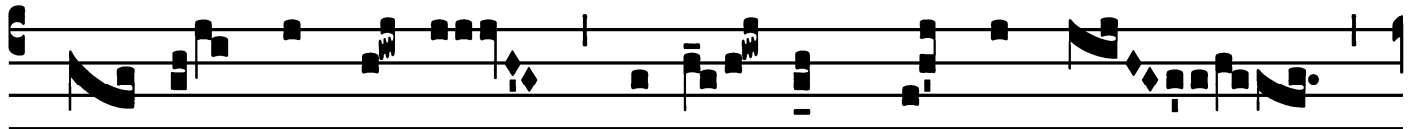
(Page 2 of 2)



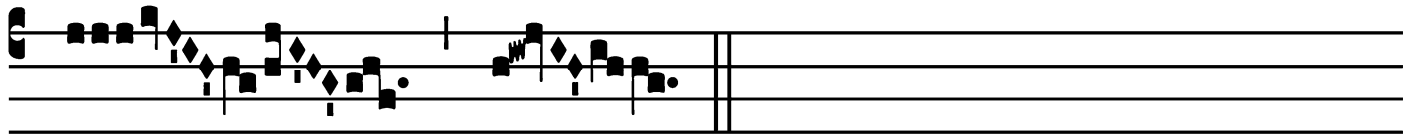
Ÿ. Spé- ci- e tú- a, et



pulchri- túdi-ne tú- a in-



tén-de, próspe-re procé- de, \* et régna.



# Second Alleluia

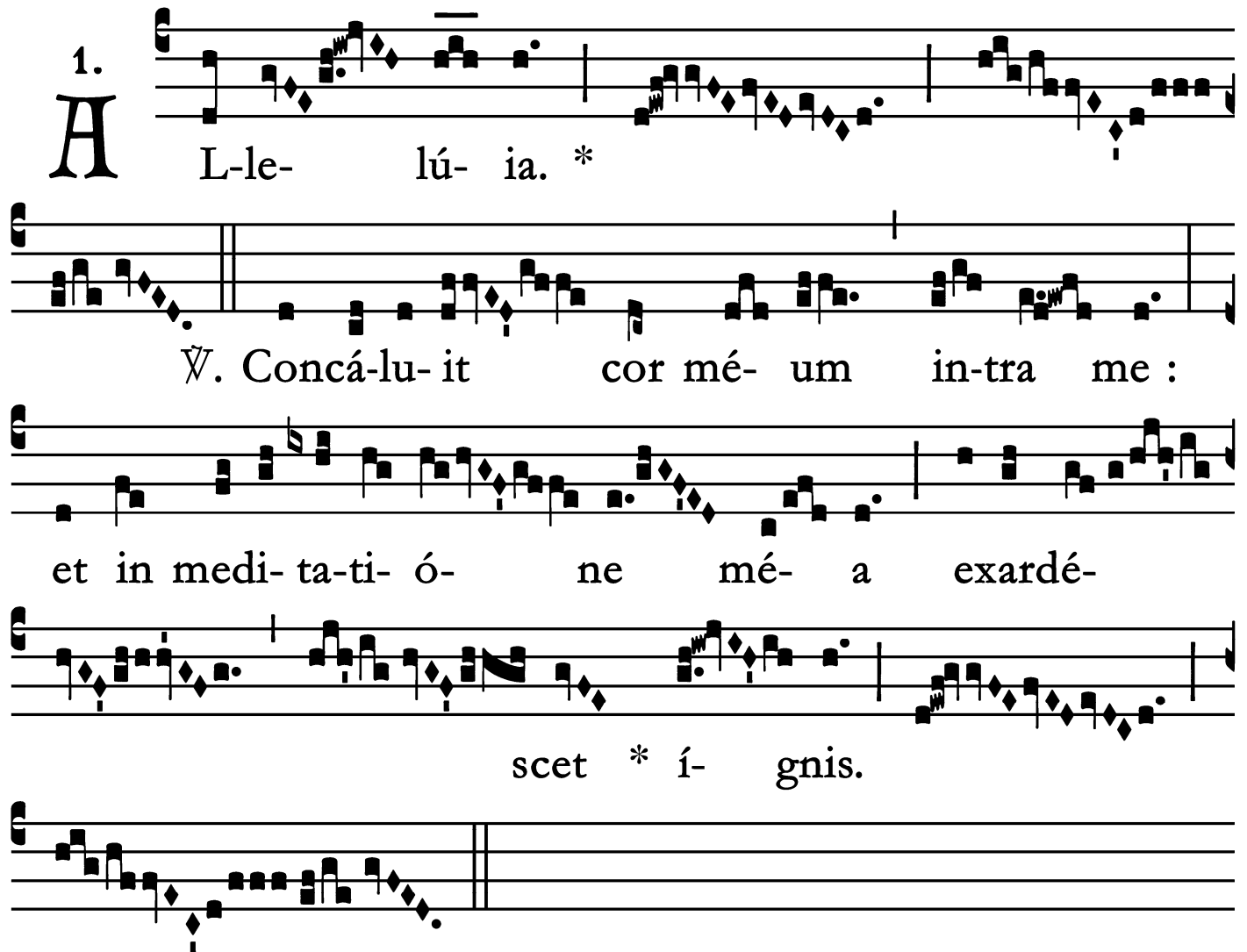
(In Paschal Time)

1.  
**A** L-le- lú- ia. \*

∇. Con-cá-lu- it cor mé- um in-tra me :

et in medi- ta- ti- ó- ne mé- a exardé-

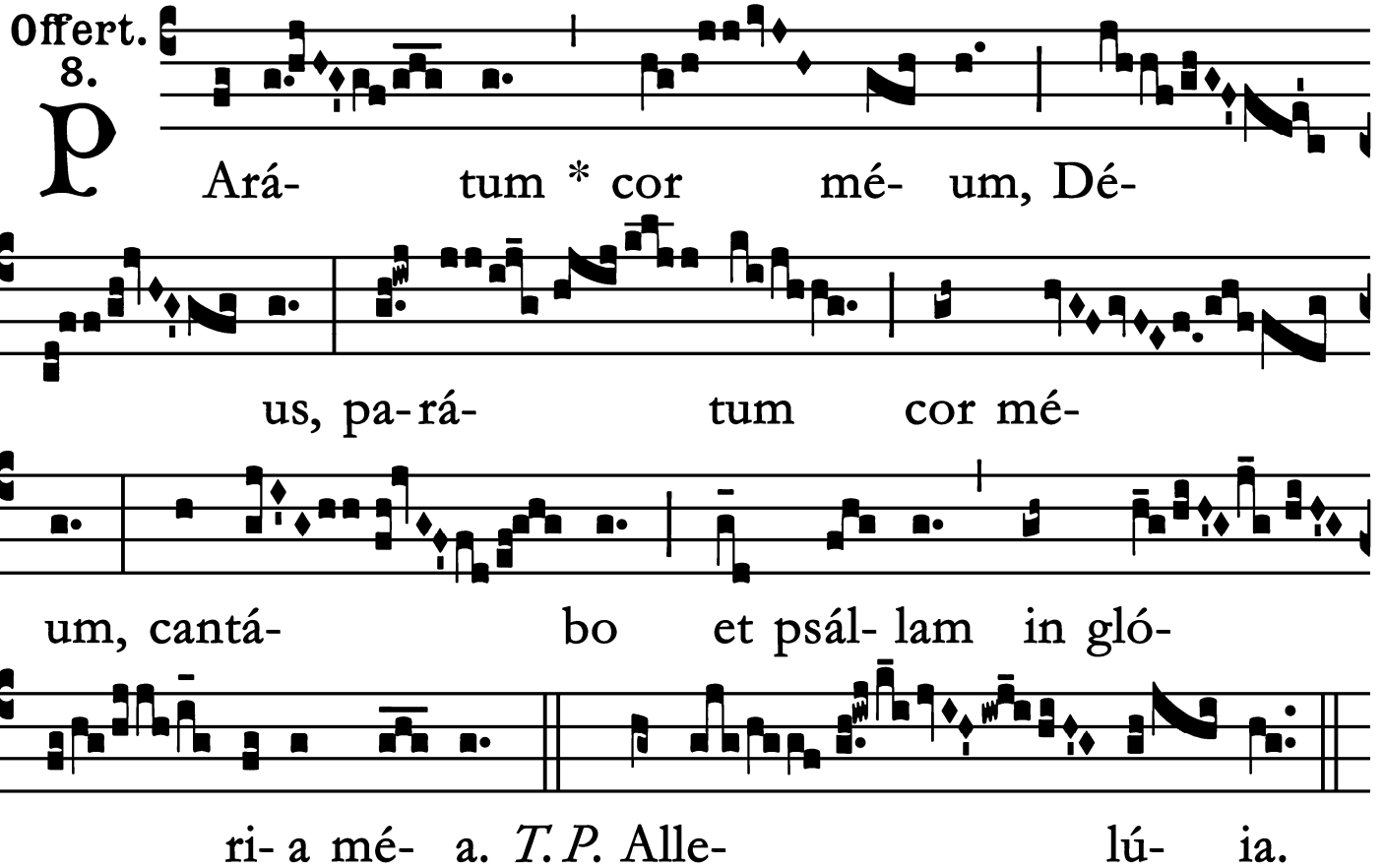
scet \* í- gnis.



Missa Votiva de S. Catharinæ Fliscæ Adurnæ, Viduæ

*Offertory*

Offert.  
8.

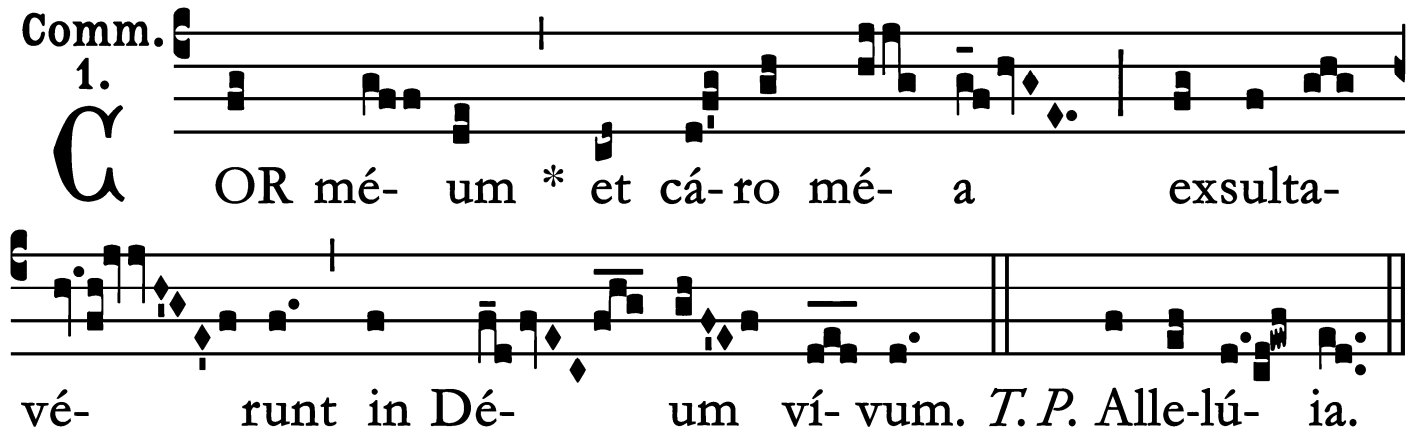


**P** Ará- tum \* cor mé- um, Dé-  
us, pa-rá- tum cor mé-  
um, cantá- bo et psál- lam in gló-  
ri- a mé- a. *T. P.* Alle- lú- ia.

Missa Votiva de S. Catharinæ Fliscæ Adurnæ, Viduæ

*Communion*

Comm. 1.



**C** OR mé- um \* et cá-ro mé- a exsulta-  
vé- runt in Dé- um ví- vum. *T.P.* Alle-lú- ia.

Missae Propriae pro Clero Romano  
Desclée et Socii, 1908.  
Supplement to Graduale Romanum No. 696.

