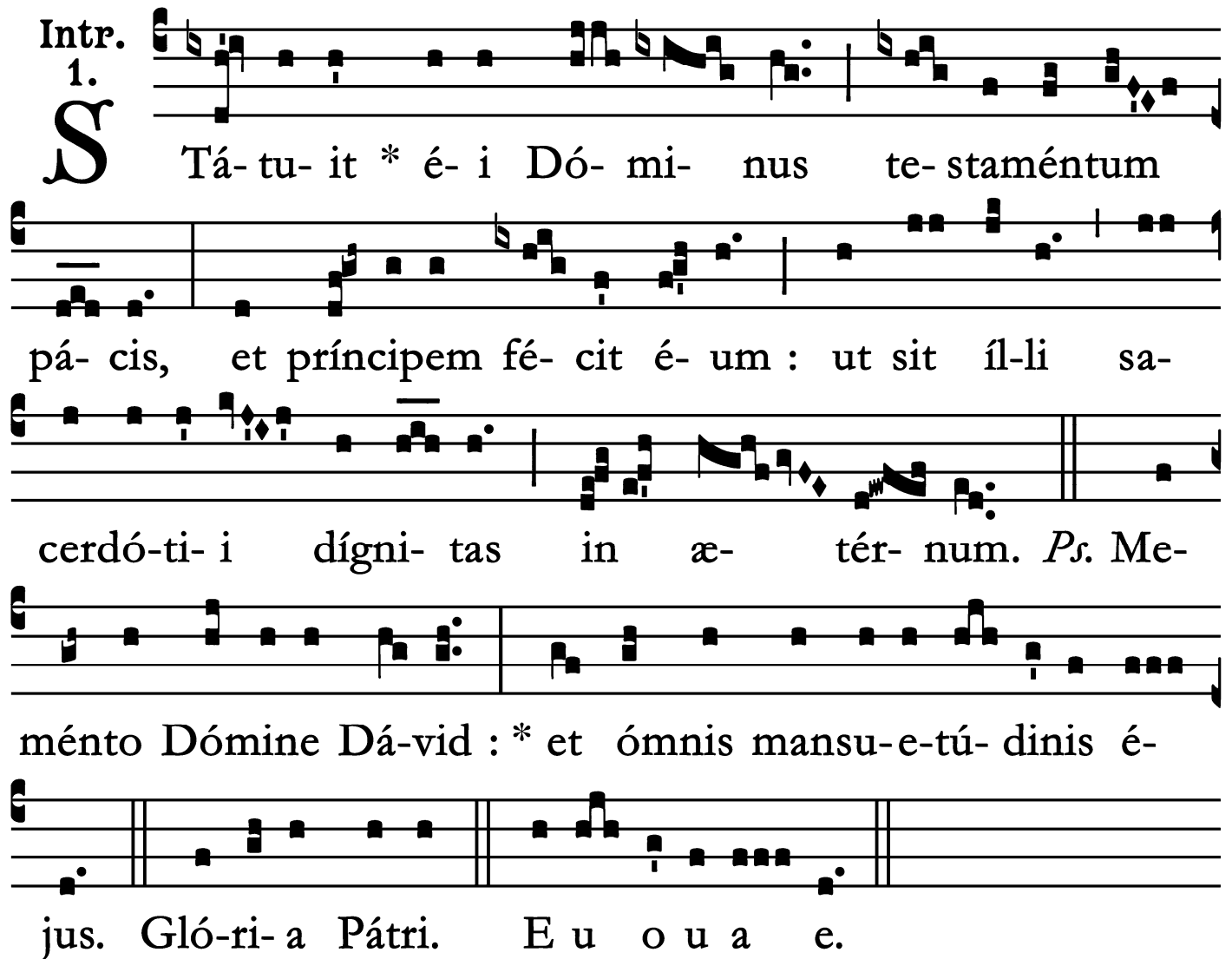


Introit

Intr. 1.



S Tá-tu-it * é-i Dó-mi-nus te-staméntum
pá-cis, et príncipem fé-cit é-um : ut sit íl-li sa-
cerdó-ti-i dígni-tas in æ-tér-num. *Ps.* Me-
ménto Dómine Dá-vid : * et ómnis mansu-e-tú-dinis é-
jus. Gló-ri-a Pátri. E u o u a e.

Gradual

Grad.

5.

G

C-ce * sacérdos má- gnus, qui in di-é-

bus sú- is plá- cu- it Dé- o.

∇. Non est invéntus sími- lis íl-li,

qui conservá-

ret * légem Excél- si.

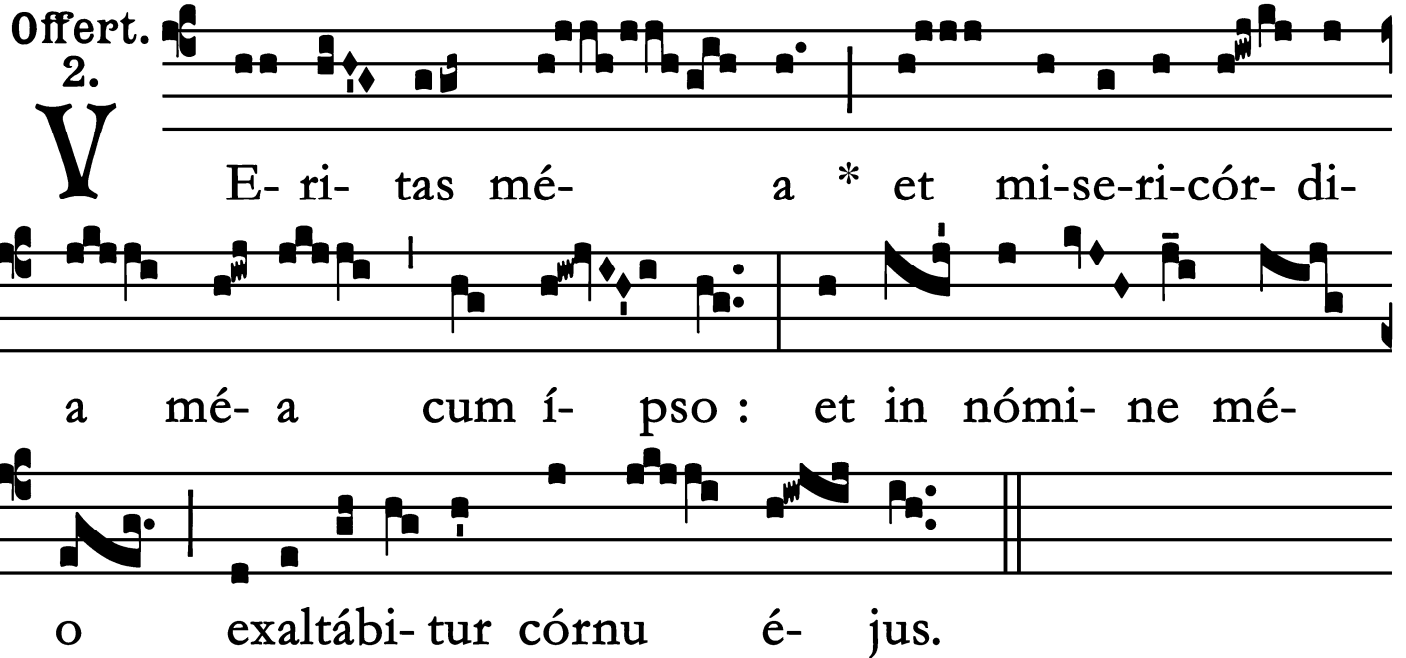
Alleluia

5.
A Lle- lú- ia. * *ij.*

∇. Be- á- tus vir sán- ctus Mar-
tí- nus, úr- bis Turó- nis, requi- é- vit : quem susce-
pé- runt An- ge- li atque Archán- ge- li, Thróni, Domi-
na- ti- ó- nes * et Vir- tú- tes.

Offertory

Offert.
2.



V E-ri-tas mé-a * et mi-se-ri-cór-di-
a mé-a cum í-psy: et in nómi-ne mé-
o exaltábi-tur córnu é-jus.

Communion

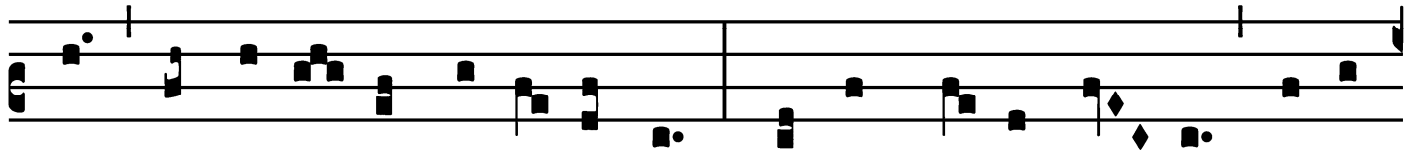
Comm.

3.

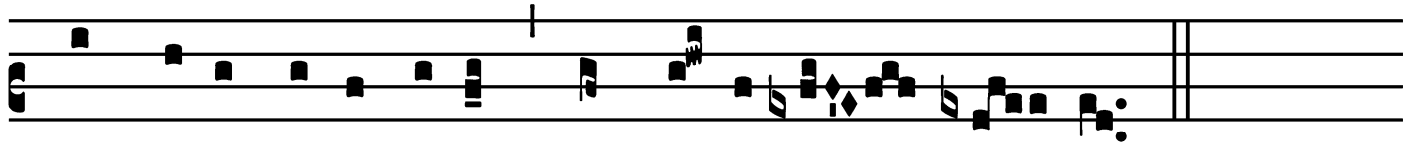
B



E- á-tus sér- vus, * quem, cum vé- ne-rit Dómi-



nus, invéne- rit vi-gi- lán-tem : amen dí-co vó- bis, super



ómni- a bóna sú- a constí- tu- et é- um.

