

Sacratissimæ Sindonis D. N. Jesu Christi - Per annum
Proprium Sanctorum pro aliquibus locis

Introit

Intr. 3.
h Umi- li- á- vit * semet-ípsum Dóminus Jé- sus
Chrí- stus usque ad mórtem, mórtem autem crú-
cis : propter quod et Dé- us exaltá- vit íl- lum, et doná-
vit íl- li nómen, quod est super ó- mne
nó- men. *T. P.* Alle- lú- ia, alle- lú- ia. *Ps.* Mi- se- ri-
córdi- as Dómini in ætérnum cantá- bo : * in genera- ti- ó-
nem et gene- ra- ti- ónem. Gló- ri- a Pátri. E u o u a e.

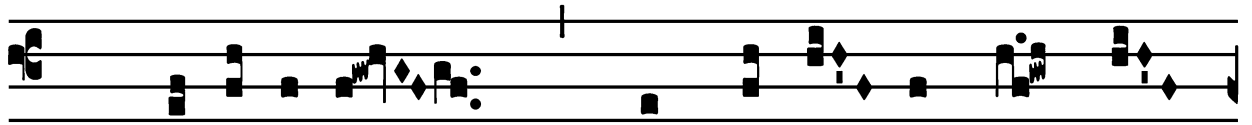
Sacratissimæ Sindonis D. N. Jesu Christi - Per annum

Gradual

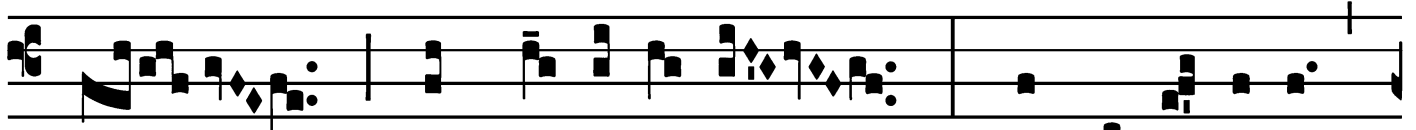
Grad.

2.

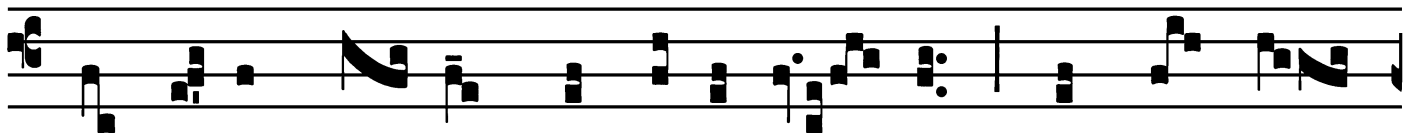
I



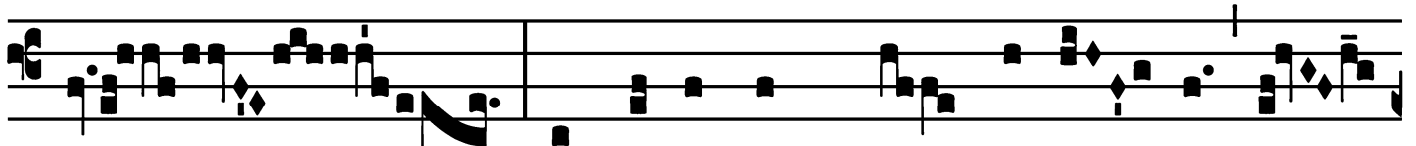
Mpropé-ri- um * exspectá- vit cor mé-



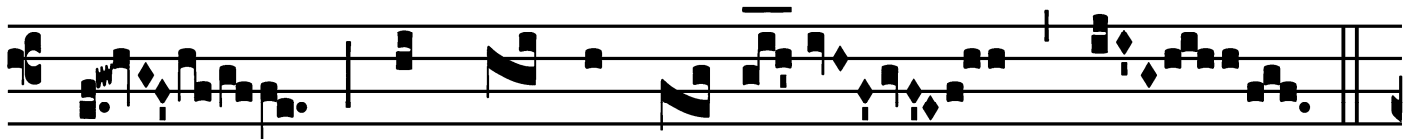
um, et mi-sé-ri- am : et sustí-nu- i,



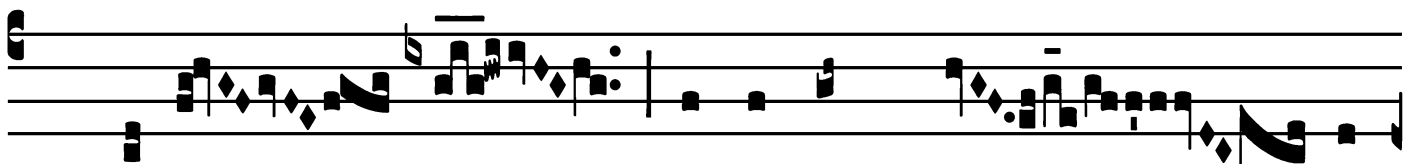
qui simul mé- cum contrista-ré- tur, et non fú-



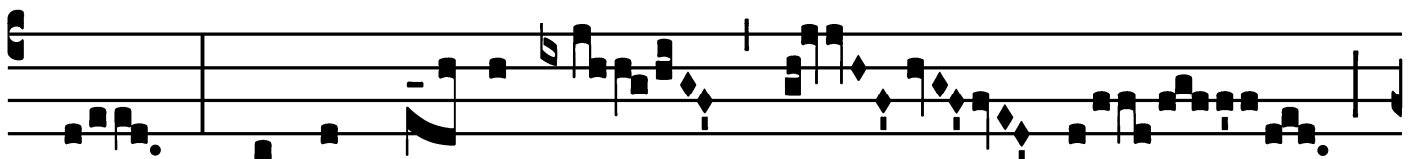
it : conso-lántem me quæ-sí- vi,



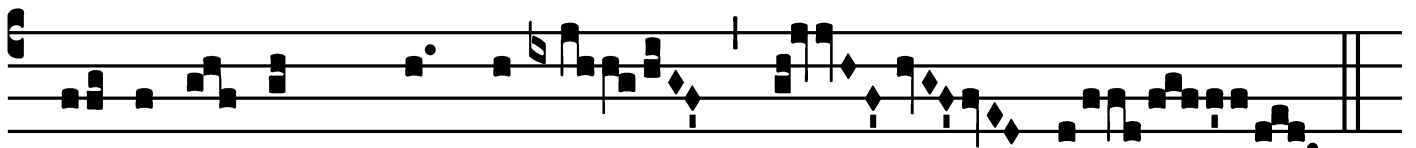
et non invé- ni.



∇. Dedé- runt in éscam mé- am



fel, et in sí- ti mé- a



po- tavé- runt me * a-cé- to.

Sacratissimæ Sindonis D. N. Jesu Christi - Per annum

Alleluia

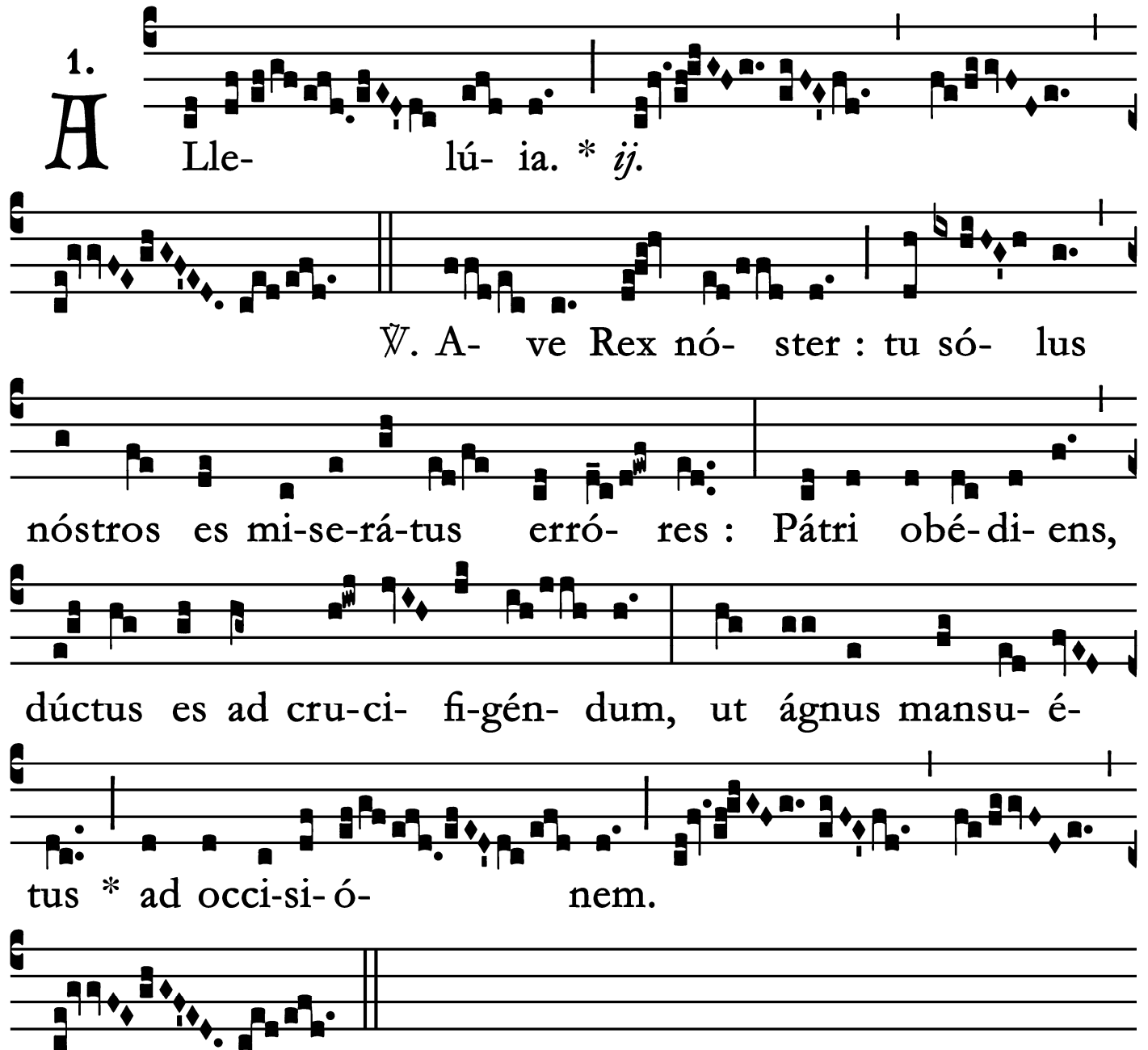
1.
A Lle- lú- ia. * *ij.*

∇. A- ve Rex nó- ster : tu só- lus

nóstros es mi-se-rá-tus erró- res : Pátri obé-di- ens,

dúctus es ad cru-ci- fi-gén- dum, ut ágnus mansu- é-

tus * ad occi-si- ó- nem.

The image shows a musical score for the Alleluia. It consists of six staves of music. The first staff begins with a large initial 'A' and the number '1.' above it. The lyrics are written below the staves. The music is in a single system with a key signature of one flat and a common time signature. The lyrics are: 'Lle- lú- ia. * ij.' followed by a large '∇' symbol and 'A- ve Rex nó- ster : tu só- lus', then 'nóstros es mi-se-rá-tus erró- res : Pátri obé-di- ens,', 'dúctus es ad cru-ci- fi-gén- dum, ut ágnus mansu- é-', and finally 'tus * ad occi-si- ó- nem.' The score ends with a double bar line.

Sacratissimæ Sindonis D. N. Jesu Christi - Per annum

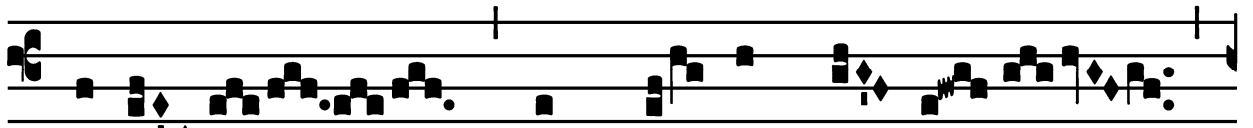
Tract

(After Septuagesima - Page 1 of 2)

Tract.

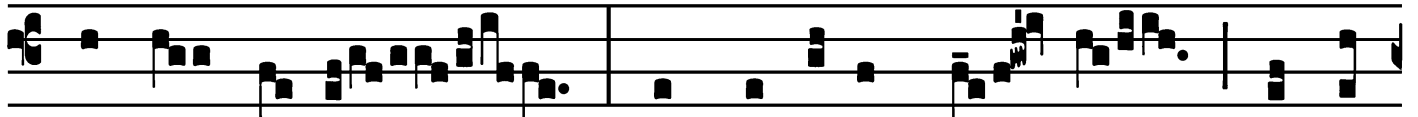
2.

V



Ere

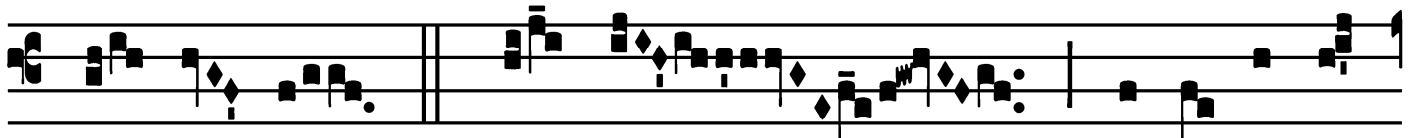
* languó- res nóstros



ipse tú- lit,

et do-lóres nó- stros

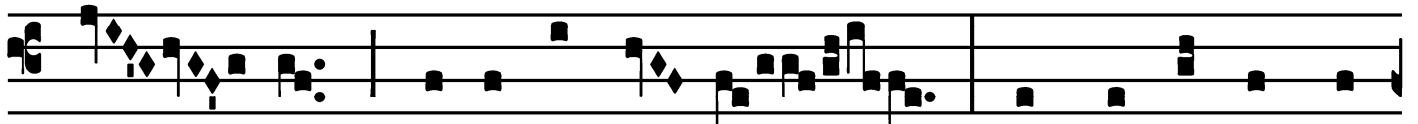
ipse



por- tá- vit.

∞. Et nos

pu- tá- vimus



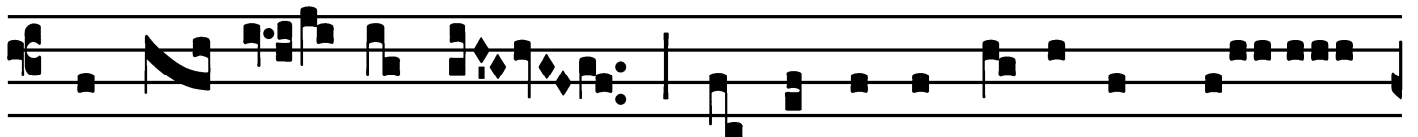
é- um qua-si lepró- sum

et percússum a



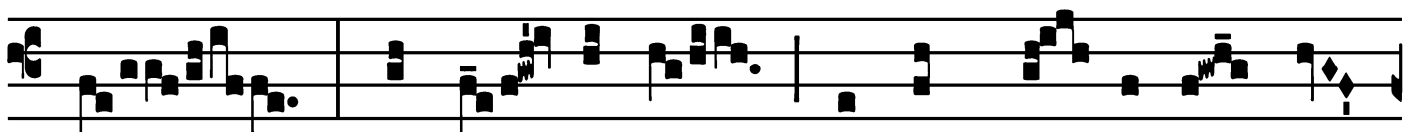
Dé- o, et humi-li- á- tum.

∞. Ipse autem



vulne- rá- tus est

propter in-iqui- tá-tes nó-



stras,

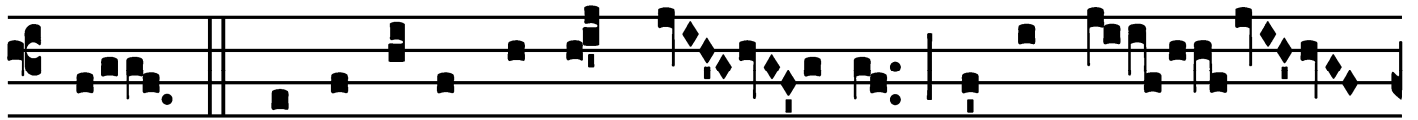
attrí- tus est

propter scé- le-ra nó-

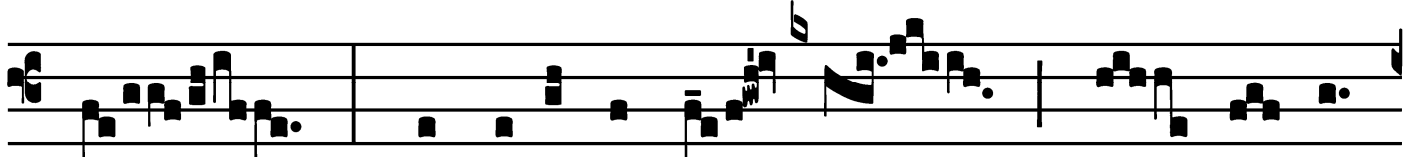
Sacratissimæ Sindonis D. N. Jesu Christi - Per annum

Tract

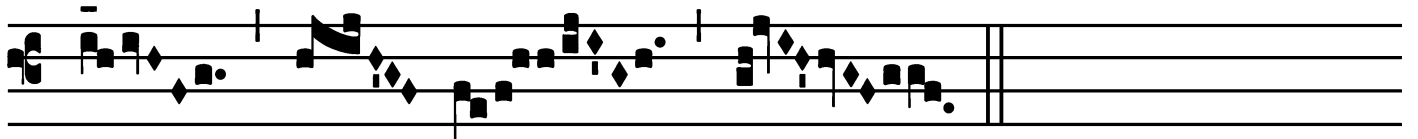
(Page 2 of 2)



stra. *V̇*. Disciplína pá-cis nó- stræ super é-



um : et livó-re é- jus sa- ná- ti *



sú- mus.

Sacratissimæ Sindonis D. N. Jesu Christi - Per annum

Second Alleluia

(In Paschal Time)

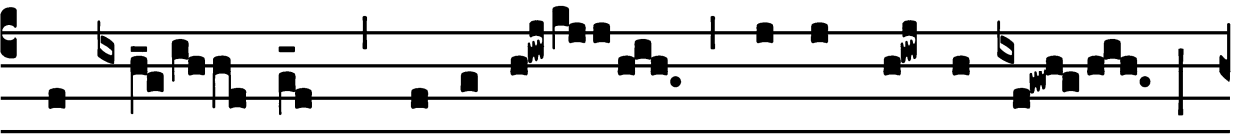
7.
A L- le- lú- ia. *

∇. Tí- bi gló- ri- a, ho- sán- na : tí- bi tri- úm- phus et vi- ctó- ri- a : tí- bi súm- mæ láu- dis et honó- ris * co- ró- na.

Sacratissimæ Sindonis D. N. Jesu Christi - Per annum

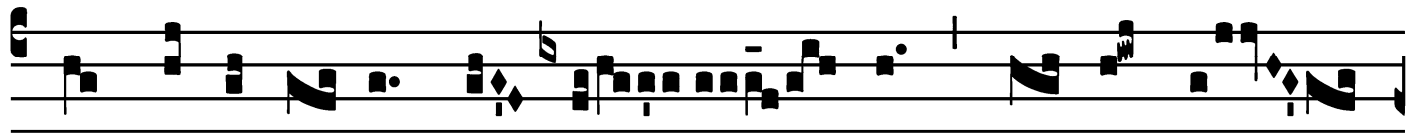
Offertory

Offert.
6.

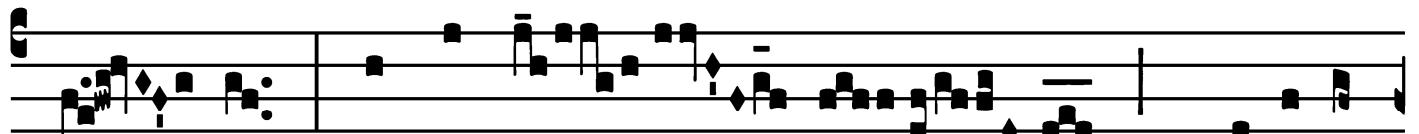


I

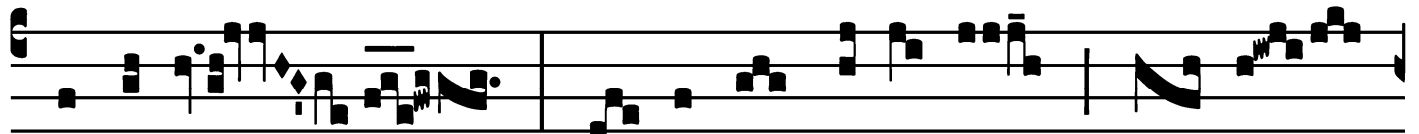
Ngrés- sus * A-aron taberná-cu-lum,



ut ho-locáustum of- fér- ret su- per al-



tá- re pro peccá- tis fi-li- órum



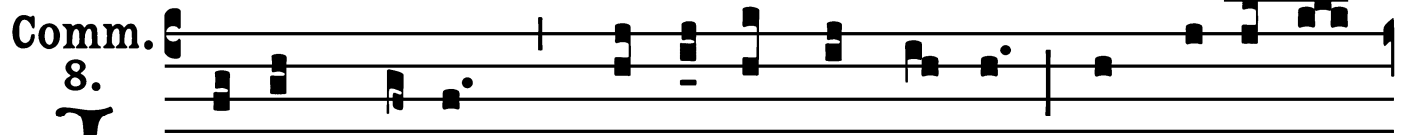
Isra- ël, tú- ni-ca líne- a in-dú-



tus est. *T. P.* Alle- lú- ia.

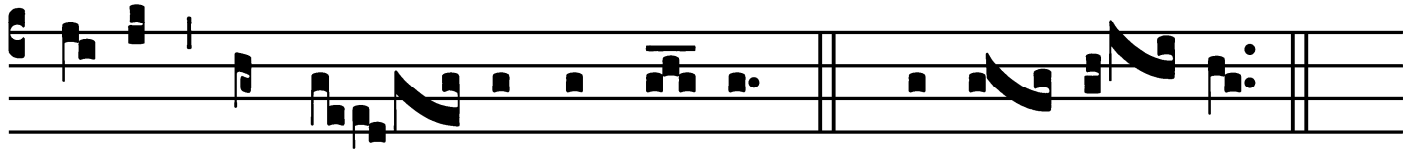
Sacratissimæ Sindonis D. N. Jesu Christi - Per annum

Communion



J

Oseph autem * mercá-tus síndo-nem, et depónens



é- um, invól- vit síndo-ne. *T.P.* Alle- lú- ia.

