

Ss. Lanceæ et Clavorum D. N. Jesu Christi - Per annum  
Proprium Sanctorum pro aliquibus locis

## Introit

Intr. 6.  
**F** O- dé- runt \* má-nus mé- as, et pédes  
mé- os : dinume- ravé- runt ó-mni- a óssa mé- a :  
et sic-ut á-qua ef-fú- sus sum. *T. P.* Alle- lú- ia,  
alle- lú- ia. *Ps.* Fáctum est cor mé-um támquam cé-ra li-  
quescens, \* in mé-di- o véntris mé- i. Gló-ri- a Pátri.  
E u o u a e.

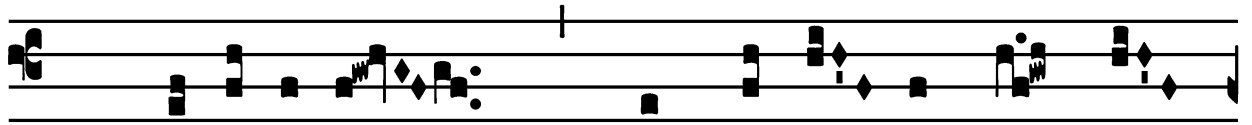
Ss. Lanceæ et Clavorum D. N. Jesu Christi - Per annum

*Gradual*

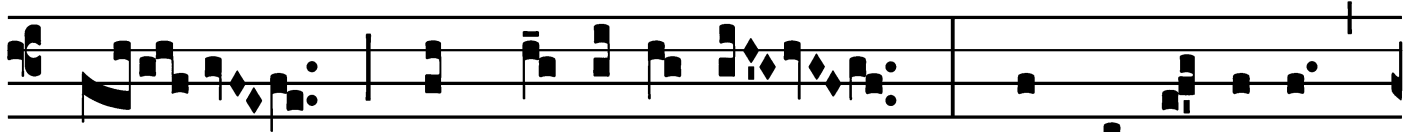
Grad.

2.

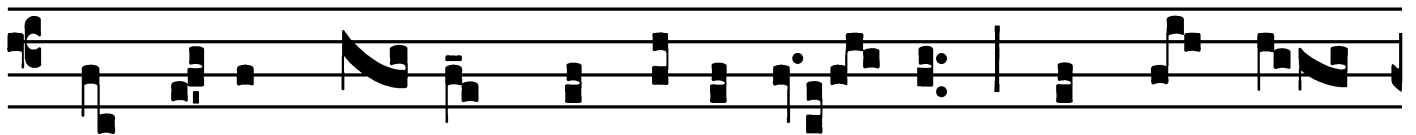
I



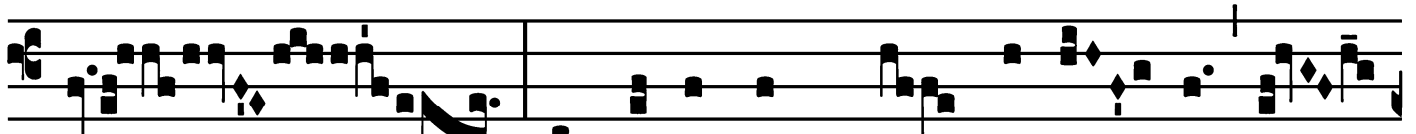
Mpropé-ri- um \* exspectá- vit cor mé-



um, et mi-sé-ri- am : et sustí-nu- i,



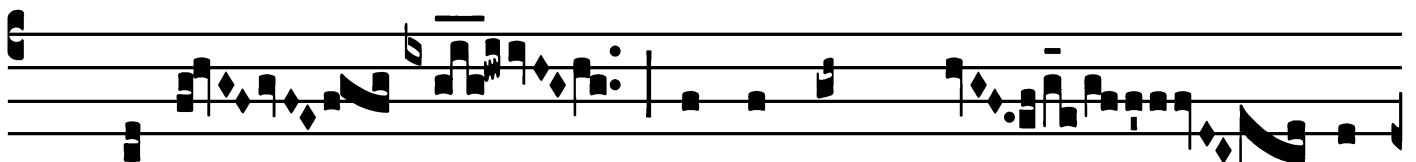
qui simul mé- cum contrista-ré- tur, et non fú-



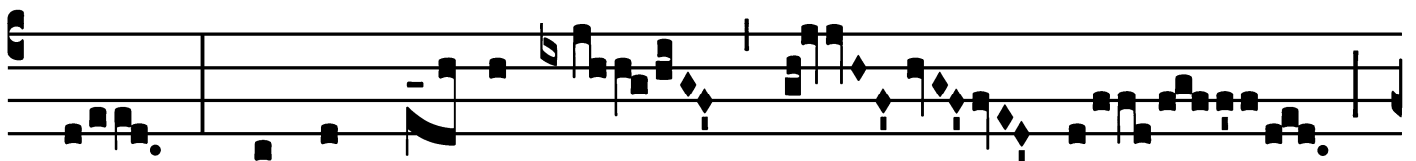
it : conso-lántem me quæ-sí- vi,



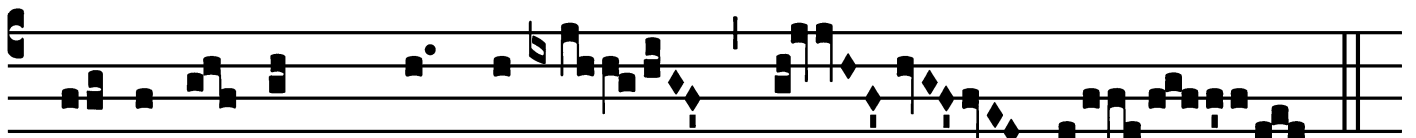
et non invé- ni.



∇. Dedé- runt in éscam mé- am



fel, et in sí- ti mé- a



po- tavé- runt me \* a-cé- to.

Ss. Lanceæ et Clavorum D. N. Jesu Christi - Per annum

*Alleluia*

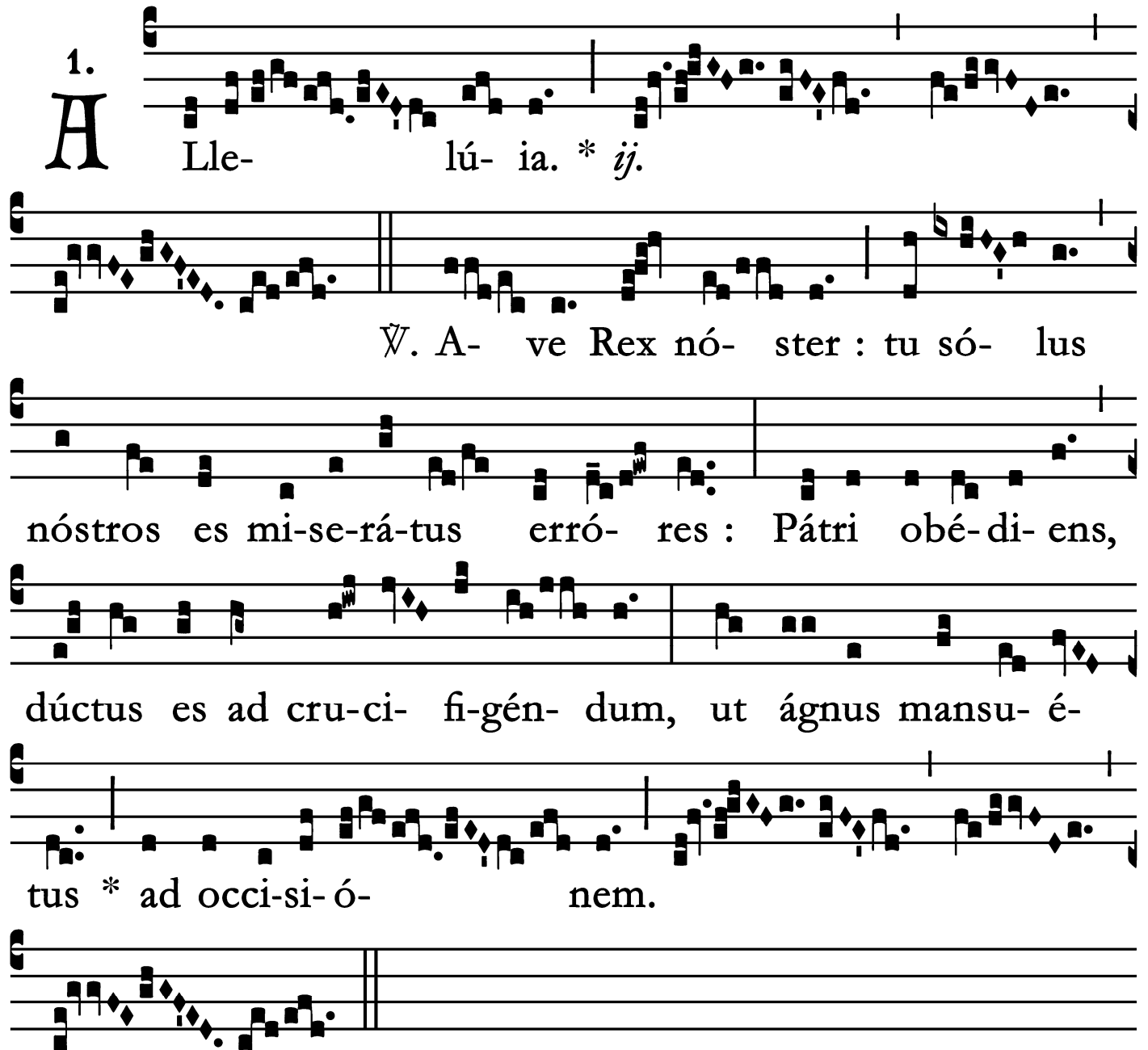
1.  
**A** Lle- lú- ia. \* *ij.*

∇. A- ve Rex nó- ster : tu só- lus

nóstros es mi-se-rá-tus erró- res : Pátri obé-di- ens,

dúctus es ad cru-ci- fi-gén- dum, ut ágnus mansu- é-

tus \* ad occi-si- ó- nem.

The image shows a musical score for the Alleluia. It consists of six systems of music. Each system has a vocal line (soprano) and a piano accompaniment line. The lyrics are written below the vocal line. The first system starts with a large initial 'A' and the number '1.' above it. The lyrics are 'Lle- lú- ia. \* ij.'. The second system has a double bar line and the lyrics '∇. A- ve Rex nó- ster : tu só- lus'. The third system has the lyrics 'nóstros es mi-se-rá-tus erró- res : Pátri obé-di- ens,'. The fourth system has the lyrics 'dúctus es ad cru-ci- fi-gén- dum, ut ágnus mansu- é-'. The fifth system has the lyrics 'tus \* ad occi-si- ó- nem.'. The sixth system has a double bar line and no lyrics.

Ss. Lanceæ et Clavorum D. N. Jesu Christi - Per annum

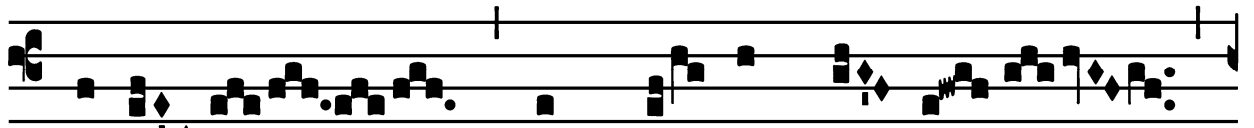
*Tract*

(After Septuagesima – Page 1 of 2)

Tract.

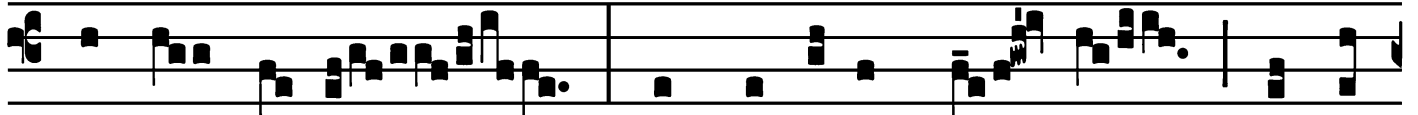
2.

V



Ere

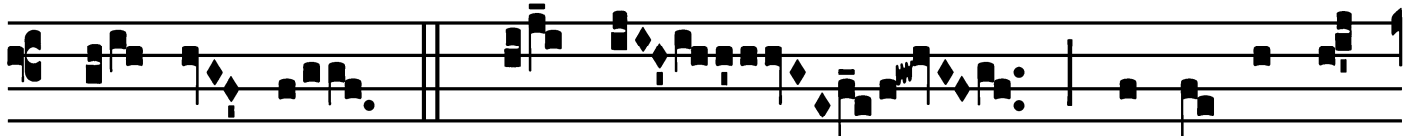
\* languó- res nóstros



ipse tú- lit,

et do-lóres nó- stros

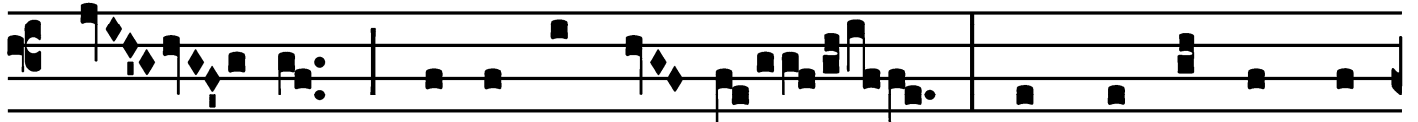
ipse



por- tá- vit.

∞. Et nos

pu- tá- vimus



é- um qua- si lepró- sum

et percússum a



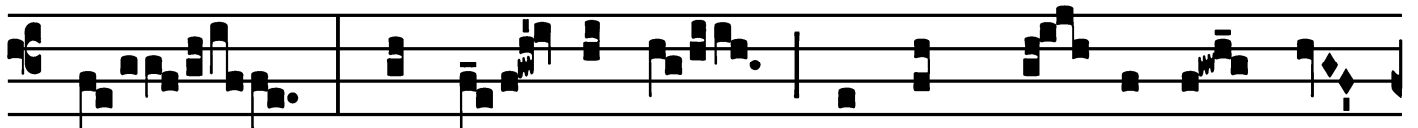
Dé- o, et humi- li- á- tum.

∞. Ipse autem



vulne- rá- tus est

propter in- iqui- tá- tes nó-



stras,

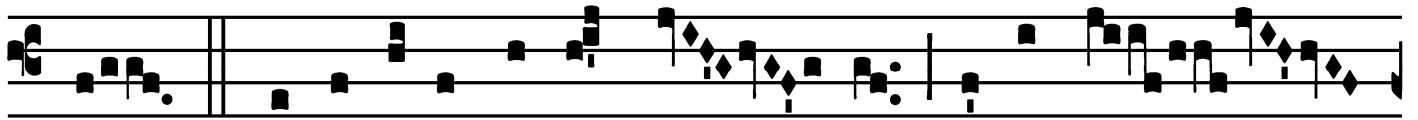
attrí- tus est

propter scé- le- ra nó-

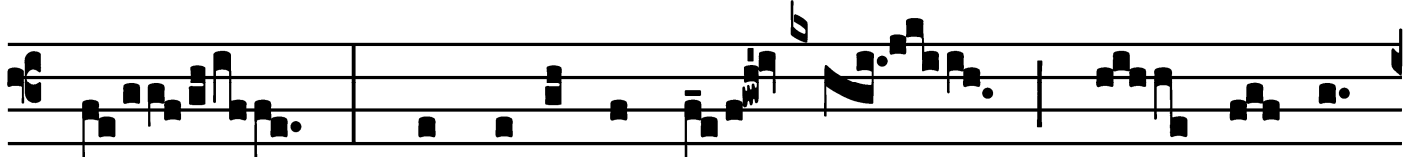
Ss. Lanceæ et Clavorum D. N. Jesu Christi - Per annum

*Tract*

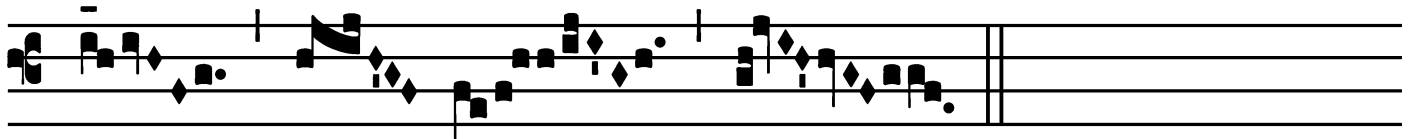
(Page 2 of 2)



stra. *V̇*. Disciplína pá-cis nó- stræ super é-



um : et livó-re é- jus sa- ná- ti \*



sú- mus.

Ss. Lanceæ et Clavorum D. N. Jesu Christi - Per annum

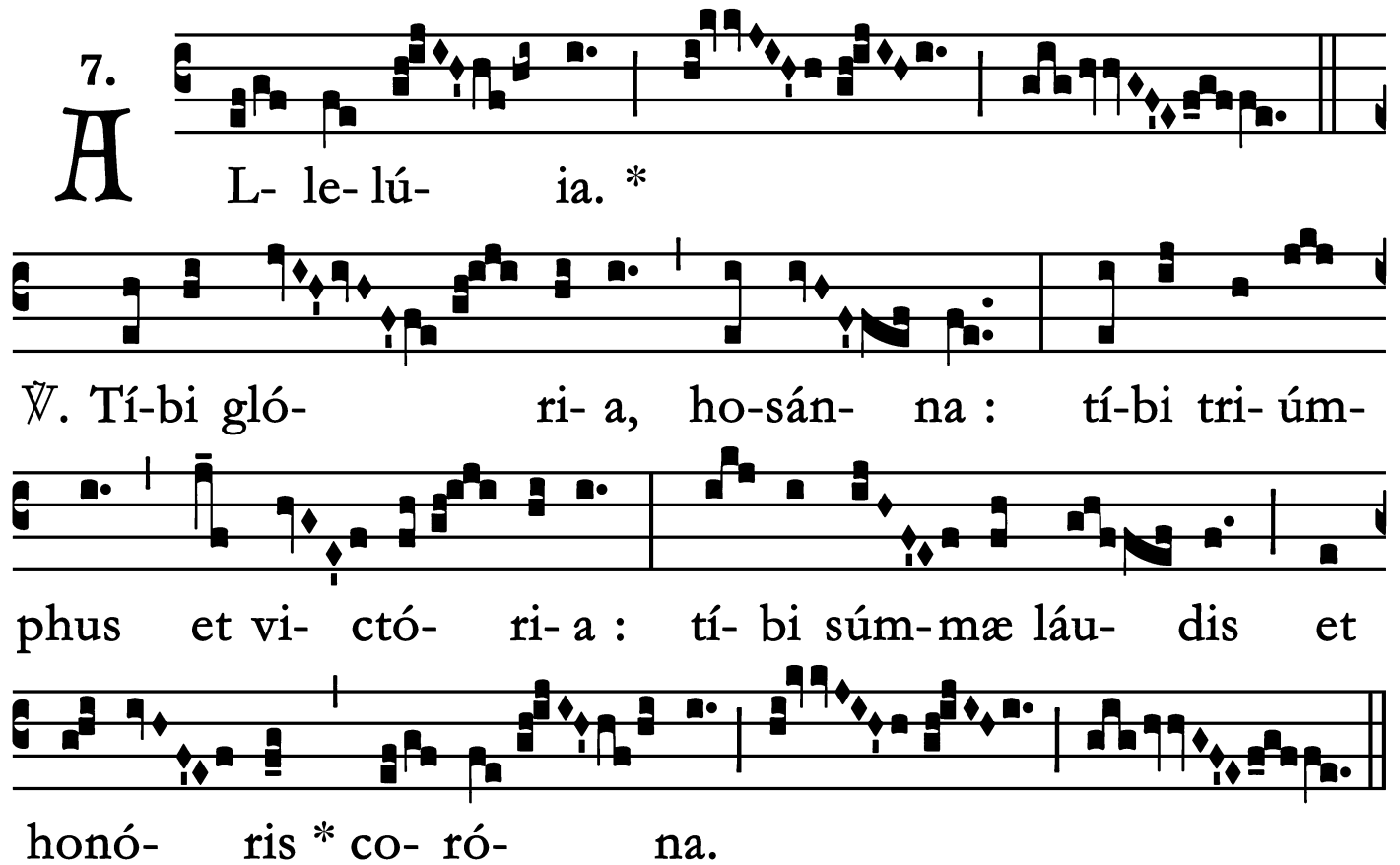
## Second Alleluia

(In Paschal Time)

7.  
**A** L- le- lú- ia. \*

∇. Tí- bi gló- ri- a, ho- sán- na : tí- bi tri- úm- phus et vi- ctó- ri- a : tí- bi súm- mæ láu- dis et

honó- ris \* co- ró- na.



Ss. Lanceæ et Clavorum D. N. Jesu Christi - Per annum

*Offertory*

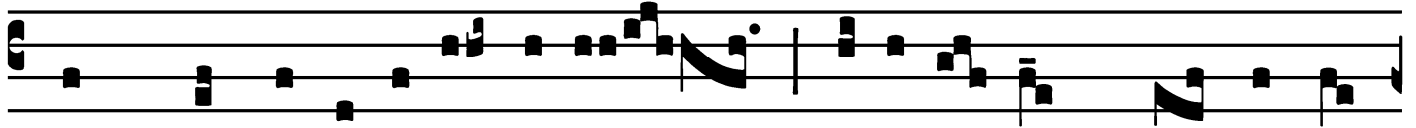
Offert.

5.

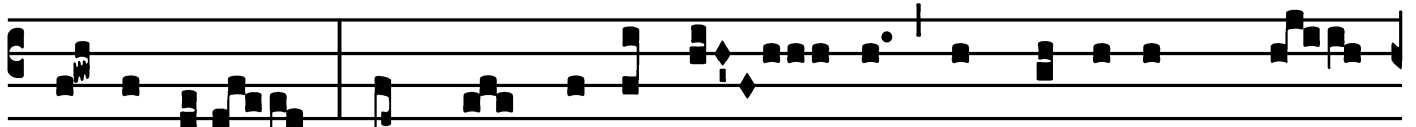
**I**



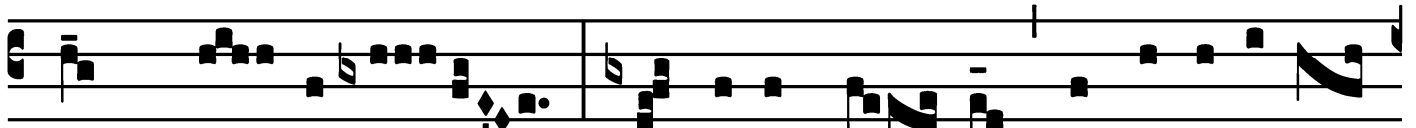
Nsurrexé- runt \* in me ví- ri in-í- qui :



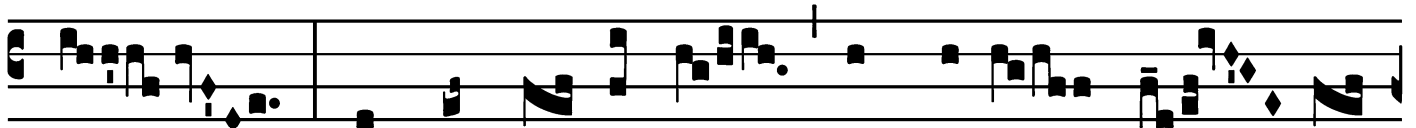
absque mi-se-ricór-di- a quæsi- é- runt me inter-



fí-ce-re : et non pepercé- runt in fá-ci-em mé-



am spú- e-re : lánce-is sú- is vulne-ravérunt



me, et concús-sa sunt ómni- a ós- sa



mé- a. *T. P.* Alle- lú- ia.

Ss. Lanceæ et Clavorum D. N. Jesu Christi - Per annum

*Communion*

Comm. 1.

**V** Idé- bunt \* in quem transfixé- runt, cum move-  
rén- tur fundamén- ta tér-ræ. *T.P.* Alle-  
lú- ia.

