

## Introit

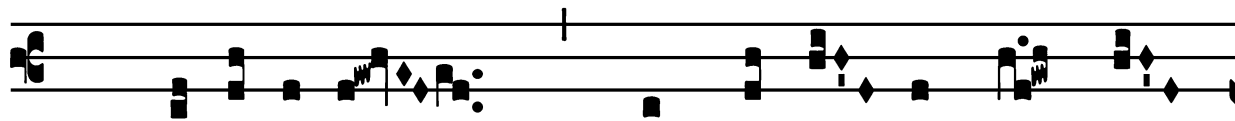
Intr. 6.  
**F** O- dé- runt \* má- nus mé- as, et pédes  
mé- os : dinume- ravé- runt ó- mni- a óssa mé- a :  
et sic-ut á- qua ef- fú- sus sum. *Ps.* Fáctum est cor  
mé- um támquam cé- ra liquéscens, \* in mé- di- o véntris  
mé- i. Gló- ri- a Pátri. E u o u a e.

## Gradual

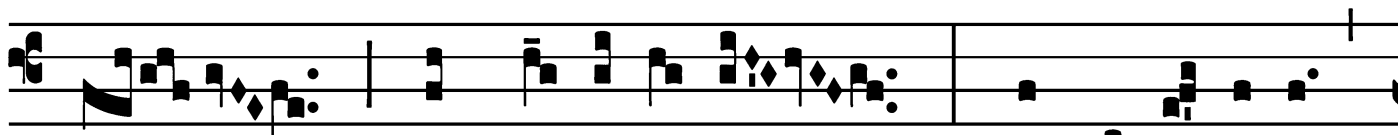
Grad.

2.

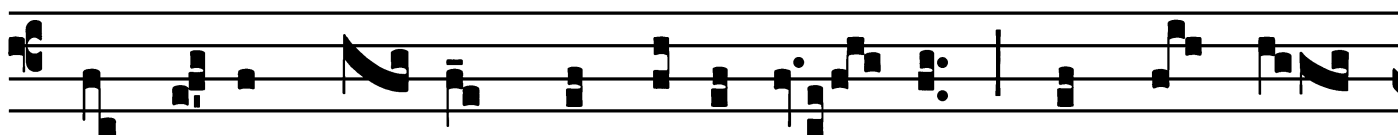
I



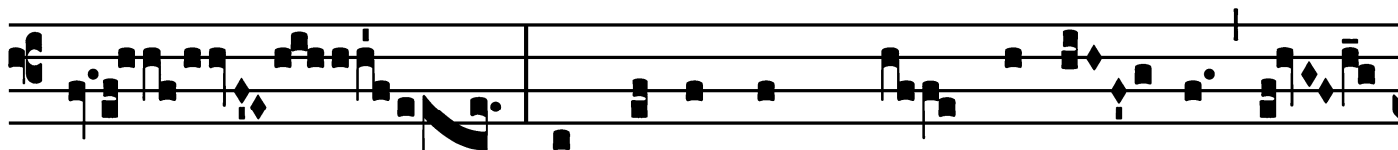
Mpropé-ri- um \* exspectá- vit cor mé-



um, et mi-sé-ri- am : et sustí-nu- i,



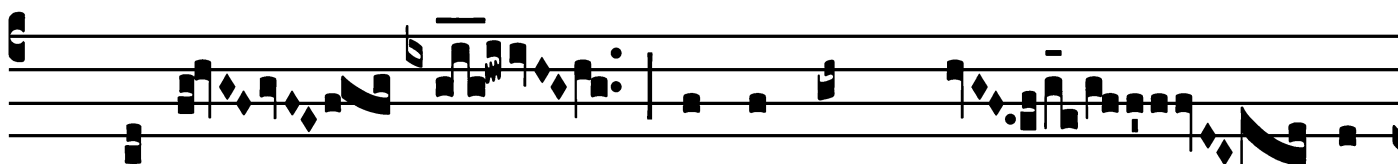
qui simul mé- cum contrista-ré- tur, et non fú-



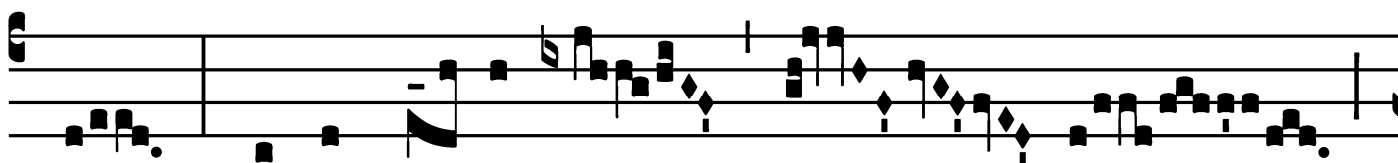
it : conso-lántem me quæ-sí- vi,



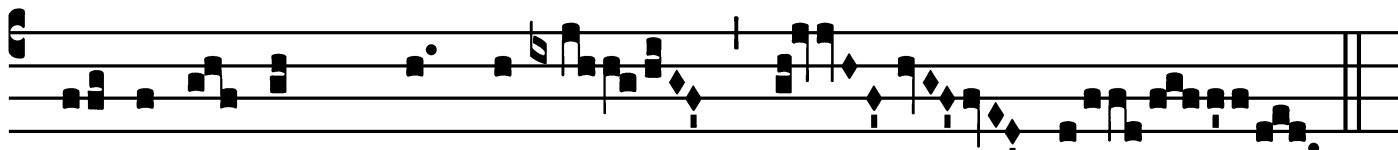
et non invé- ni.



∇. Dedé- runt in éscam mé- am



fel, et in sí- ti mé- a



po- tavé- runt me \* a-cé- to.

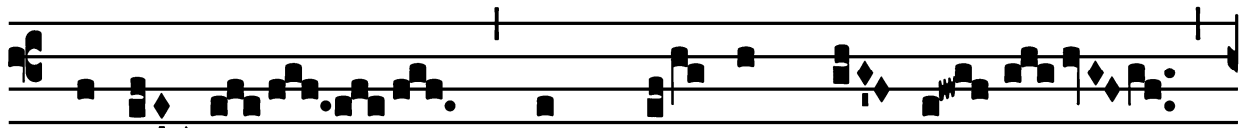
# Tract

(Page 1 of 2)

Tract.

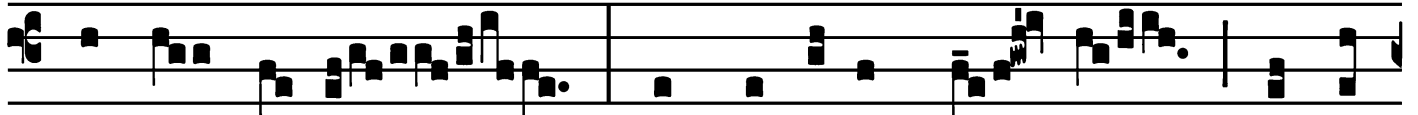
2.

V



Ere

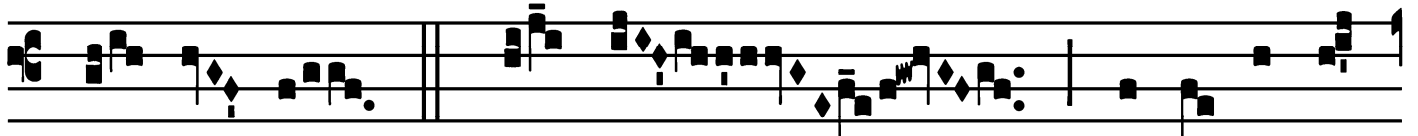
\* languó- res nóstros



ipse tú- lit,

et do-lóres nó- stros

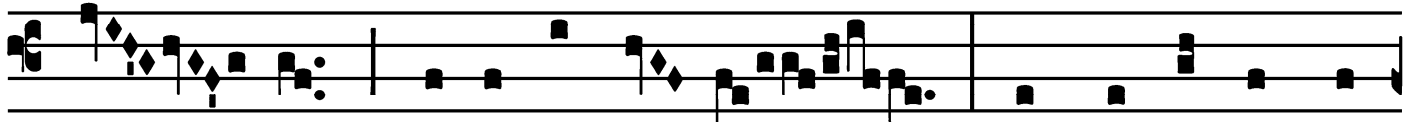
ipse



por- tá- vit.

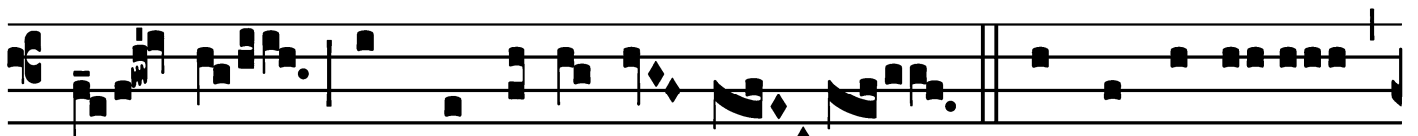
∞. Et nos

pu- tá- vimus



é- um qua-si lepró- sum

et percússum a



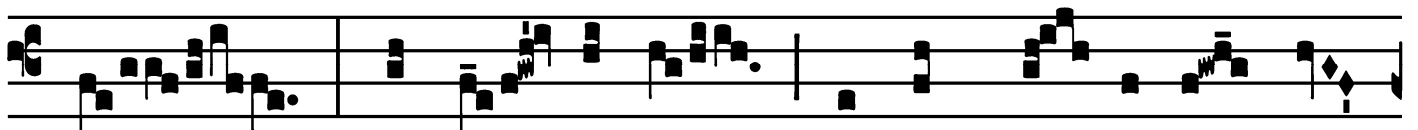
Dé- o, et humi-li- á- tum.

∞. Ipse autem



vulne- rá- tus est

propter in-iqui- tá-tes nó-



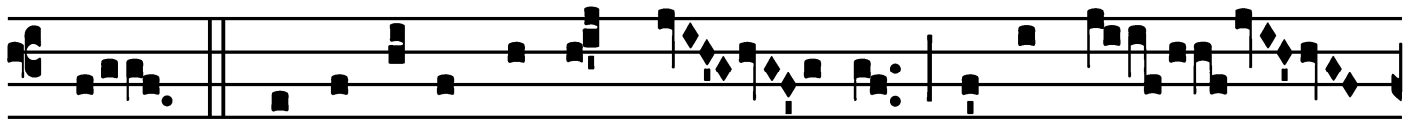
stras,

attrí- tus est

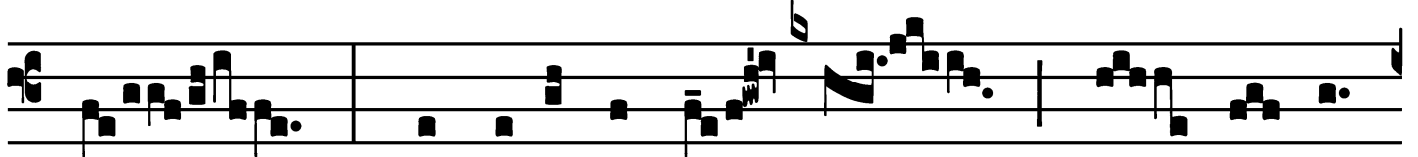
propter scé- le-ra nó-

*Tract*

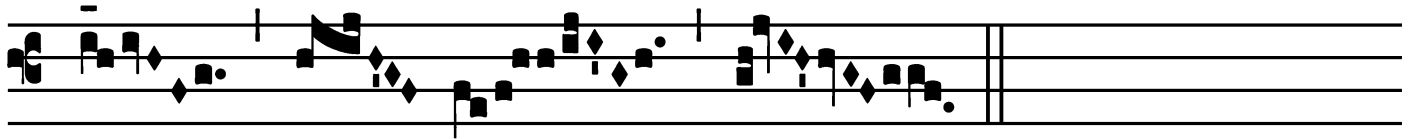
(Page 2 of 2)



stra. *V̇*. Disciplína pá-cis nó- stræ super é-



um : et livó-re é- jus sa- ná- ti \*



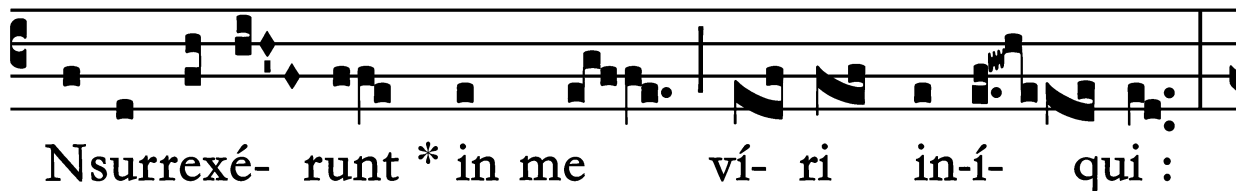
sú- mus.

# Offertory

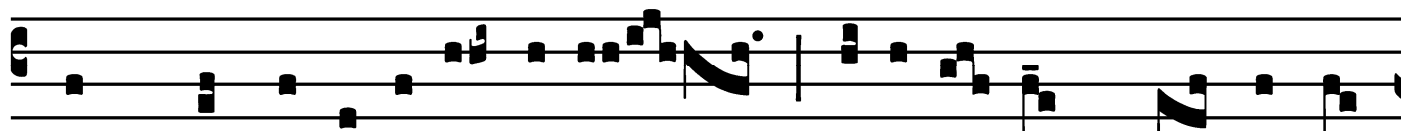
Offert.

5.

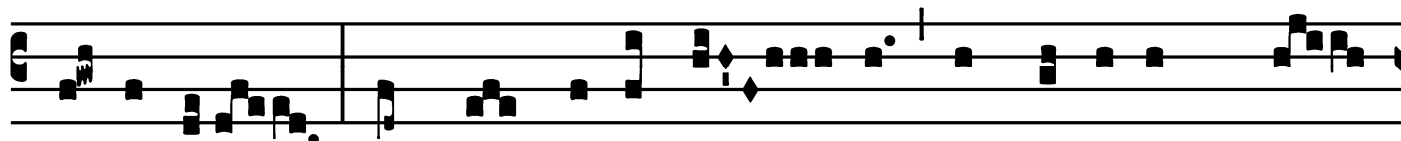
I



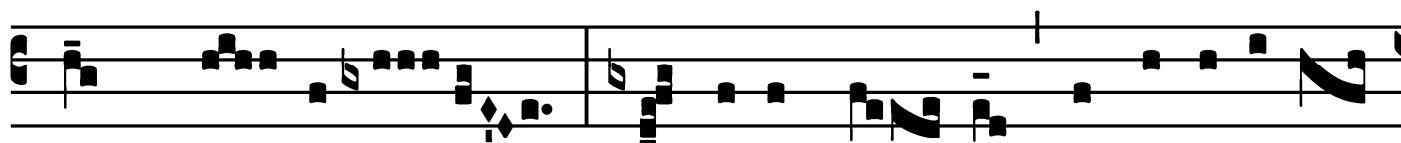
Nsurrexé- runt \* in me ví- ri in-í- qui :



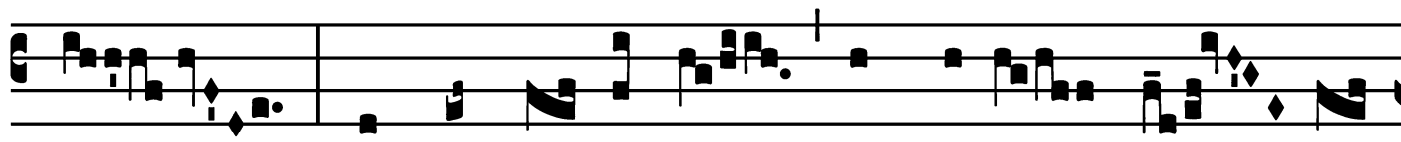
absque mi-se-ricór-di- a quæsi- é- runt me inter-



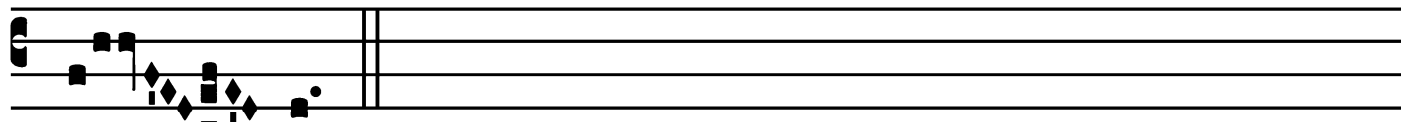
fí-ce-re : et non pepercé- runt in fá-ci-em mé-



am spú- e-re : lánce-is sú- is vulne-ravérunt



me, et concús-sa sunt ómni- a ós- sa



mé- a.

## Communion

Comm. 1.

**V** Idé- bunt \* in quem transfixé- runt, cum move-  
rén- tur fundamén- ta tér-ræ.

