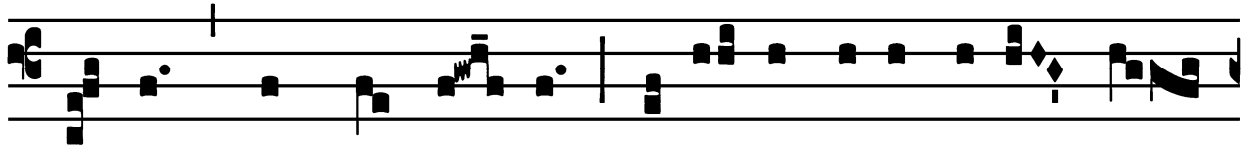


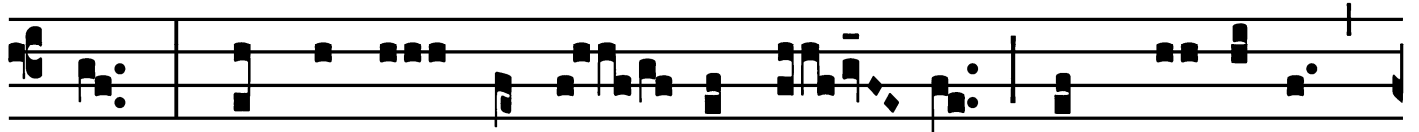
B. Mariæ V. de Guadalupe - Die 12 Decembris
Proprium Sanctorum pro aliquibus locis

Introit

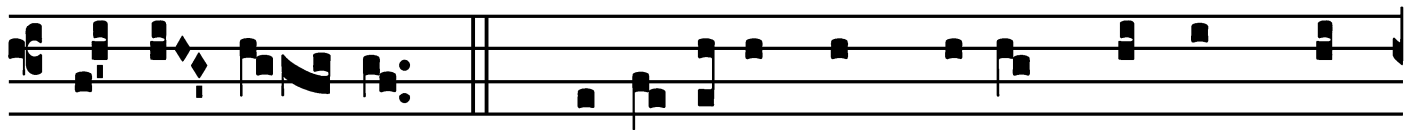
Intr.
2.
S



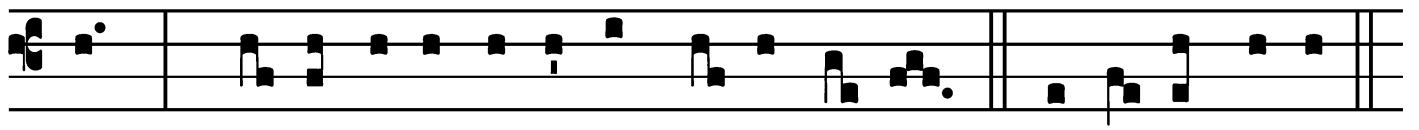
Alve * sáncta Pá- rens, ení- xa pu-érpera Ré-



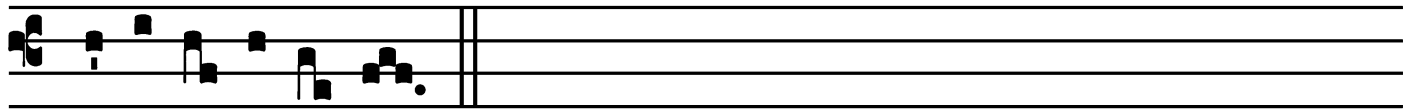
gem, qui có-lum terrám-que ré- git in sǽ-cu-la



sǽ-cu- ló- rum. *Ps.* Eructávit cor mé-um vérbum bó-



num : * dí-co égo ópe-ra mé- a ré-gi. Gló-ri- a Pátri.



E u o u a e.

B. Mariæ V. de Guadalupe - Die 12 Decembris

Gradual

Grad.

5.

Q

Uæ est í- sta, * quæ progré- di-tur qua-si

auró- ra consúrgens, púlchra ut lú- na, e-

lé-cta ut sol?

∇. Qua-si árcus

re-fúlgens

in-

ter nébu-las gló- ri- æ, et qua-si flos ro-

sá- rum in di-ébus * vér- nis.

Alleluia

8.
A

L-le- lú- ia. * *ij.*

Ÿ. Fló- res apparu-é- runt in

tér-ra nó- stra, témpus puta-ti-ó- nis * ad-

vé- nit.

The image shows a musical score for the Alleluia. It consists of four systems of music. Each system has a vocal line (soprano) and a piano accompaniment line. The lyrics are in Latin. The first system starts with a large initial 'A' and the number '8.'. The lyrics are 'L-le- lú- ia. * ij.'. The second system has the lyrics 'Ÿ. Fló- res apparu-é- runt in'. The third system has the lyrics 'tér-ra nó- stra, témpus puta-ti-ó- nis * ad-'. The fourth system has the lyrics 'vé- nit.'. The piano accompaniment features a rhythmic pattern of eighth and sixteenth notes.

B. Mariæ V. de Guadalupe - Die 12 Decembris

Offertory

Offert.

5.

E

- lé- gi, * et sancti-fi-cá- vi ló- cum í- stum,

ut sit i- bi nó- men mé-

um, et permá- ne-ant ócu-li mé-i et cor

mé- um i- bi cún-ctis di- é- bus.

Communion

Comm.
8.



N ON fé- cit * tá- li- ter ómni na- ti- ó- ni : et ju-
dí- ci- a sú- a non mani- festá- vit é- is.

