

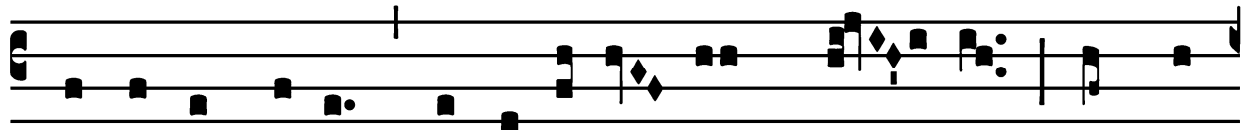
Votive Mass for the Sick

Introit

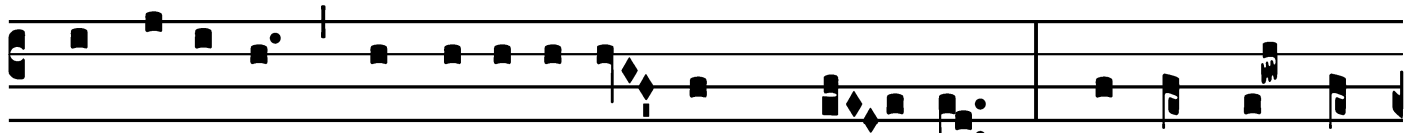
Intr.

5.

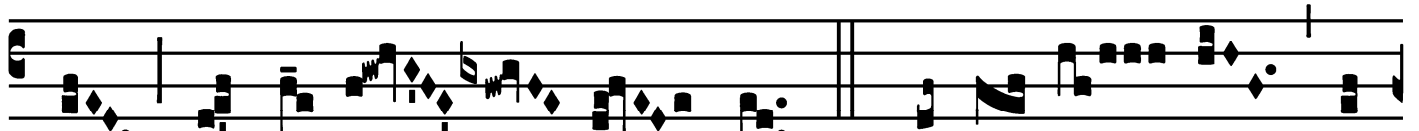
E



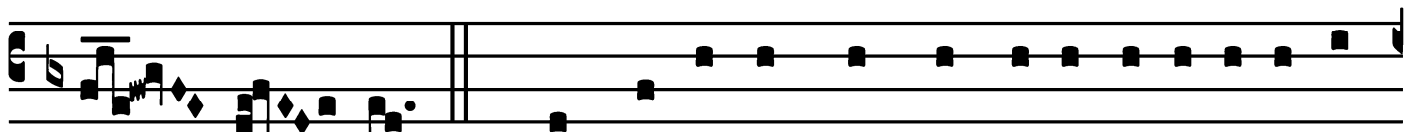
X-áudi Dé-us * o-ra-ti-ó-nem mé-am, et ne



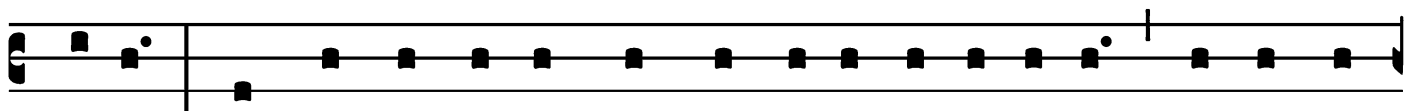
despéxe-ris depreca-ti-ó-nem mé-am : inténde in



me, et exáu-di me. *T.P.* Alle-lú-ia, al-



le-lú-ia. *Ps.* Contristá-tus sum in exerci-ta-ti-óne



mé-a : * et conturbá-tus sum a vóce in-imí-ci, et a tri-



bu-la-ti-óne pecca-tó-ris. Gló-ri-a Pátri. E u o u a e.

Votive Mass for the Sick

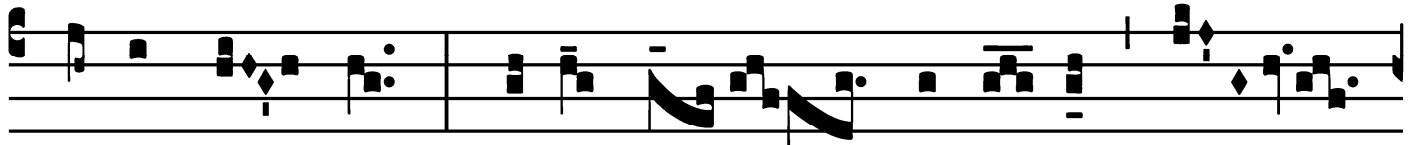
Gradual

Grad.

7.



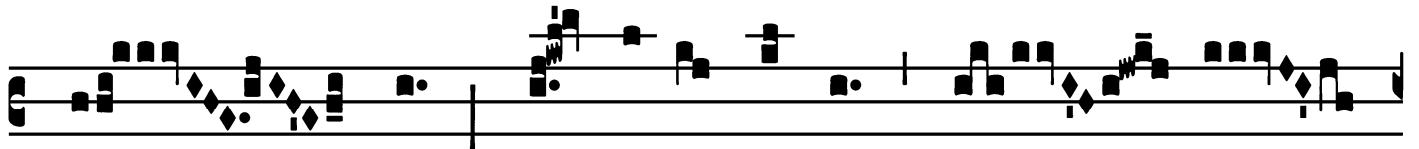
I-se-ré-re mí-hi, * Dómi- ne, quó-ni- am



infírmus sum : sána me, Dómi- ne.



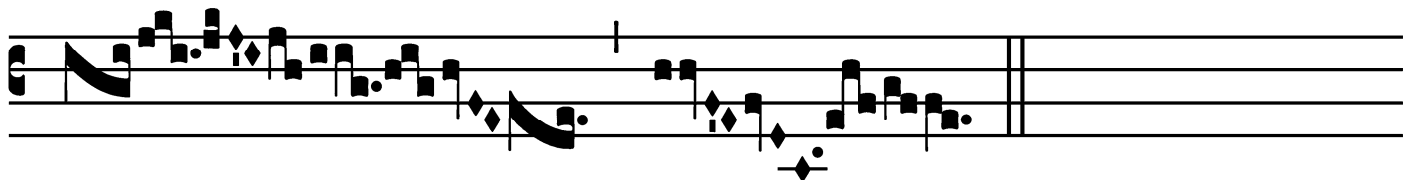
∩. Conturbá-ta



sunt ómni- a óssa mé- a :



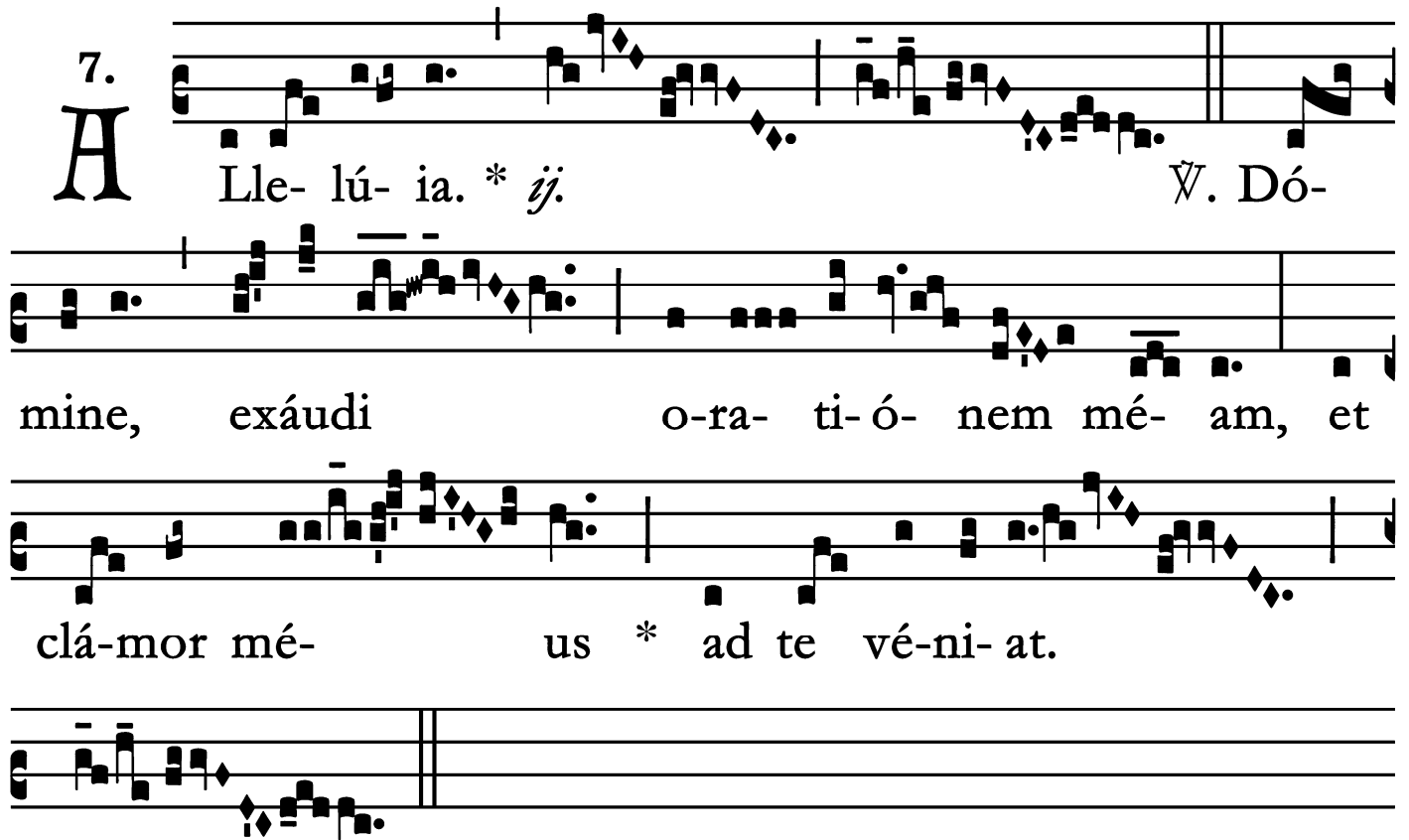
et á- nima mé- a turbá- ta est * valde.



Votive Mass for the Sick

Alleluia

7.
A Lle- lú- ia. * *ij.* *Ÿ.* Dó-
mine, exáudi o-ra- ti- ó- nem mé- am, et
clá-mor mé- us * ad te vé-ni- at.



Votive Mass for the Sick
Second Alleluia
(In Paschal Time)

1.
A L- le- lú- ia. * Ψ . In

Dé- o spe- rá- vit cor mé- um, et adjú- tus sum : et

re- fló- ru- it cá- ro mé- a, et

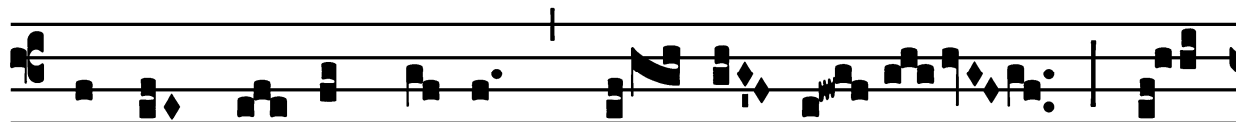
ex vo- luntá- te mé- a confi- té- bor * é- i.

Votive Mass for the Sick
Tract
(After Septuagesima – Page 1 of 2)

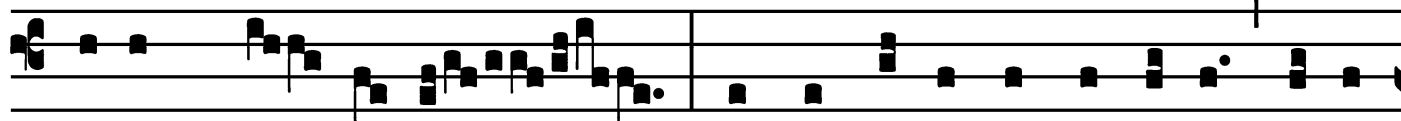
Tract.

2.

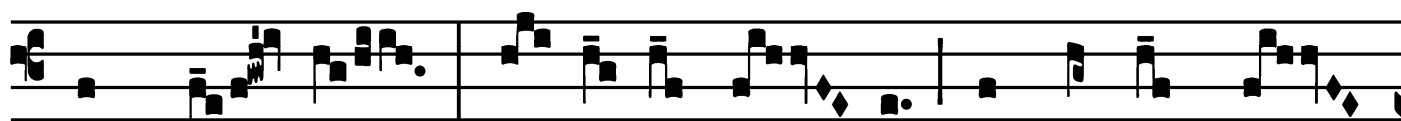
M



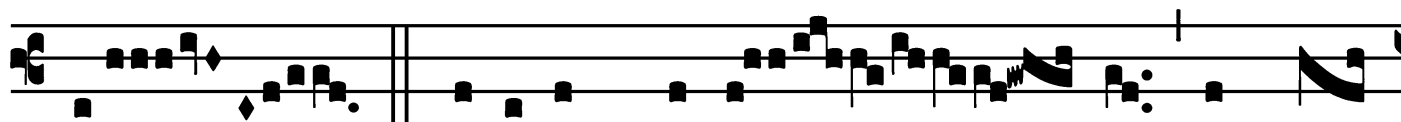
I-se- ré- re mé- i, * Dó- mi- ne, quó-



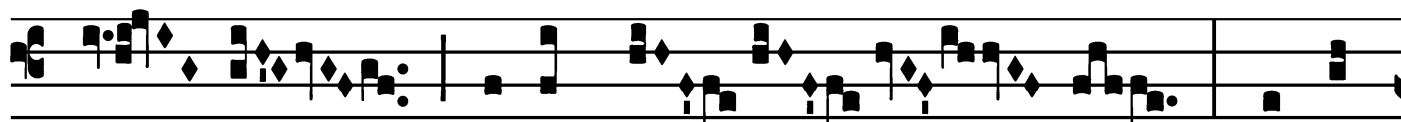
ni- am trí- bu- lor : conturbá- tus est in í- ra ócu-



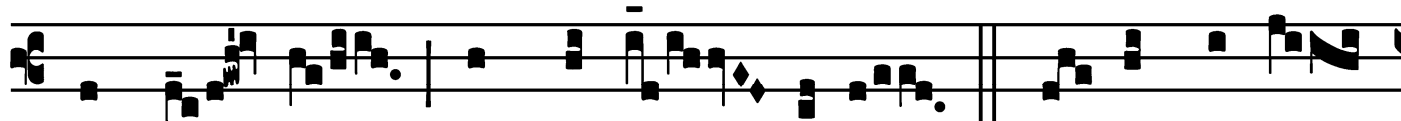
lus mé- us, á- nima mé- a, et vénter mé-



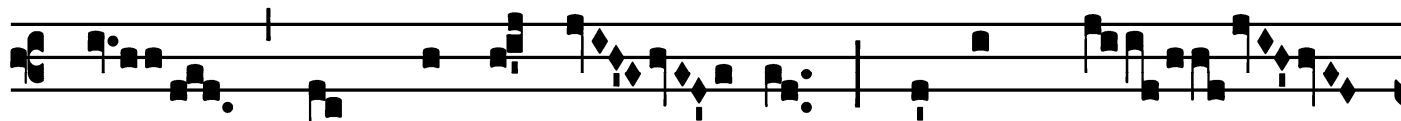
us. \forall . Quóni- am de- fé- cit in do-



ló- re ví- ta mé- a, et án-



ni mé- i in gemí- tibus. \forall . In- firmá- ta

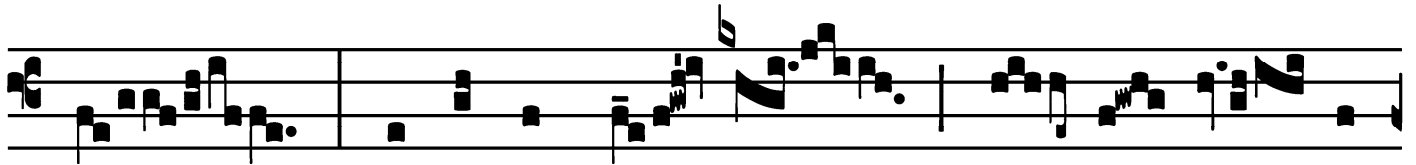


est in pauper- tá- te vírtus mé-

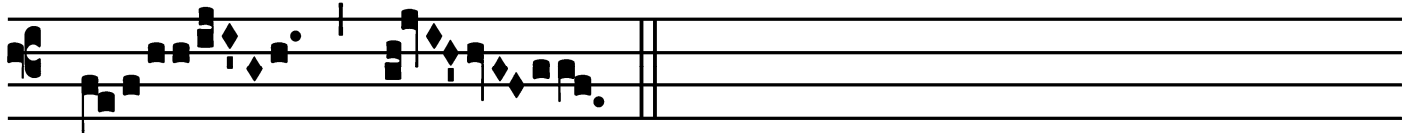
Votive Mass for the Sick

Tract

(Page 2 of 2)



a : et óssa mé- a * con- tur- bá- ta



sunt.

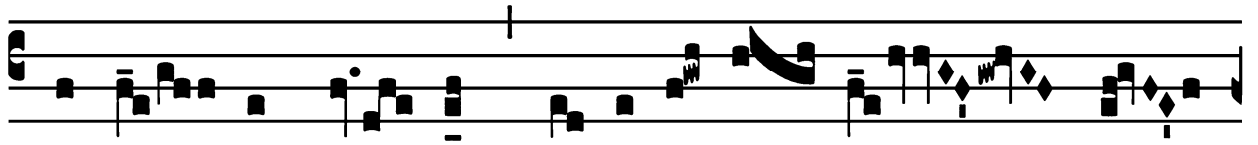
Votive Mass for the Sick

Offertory

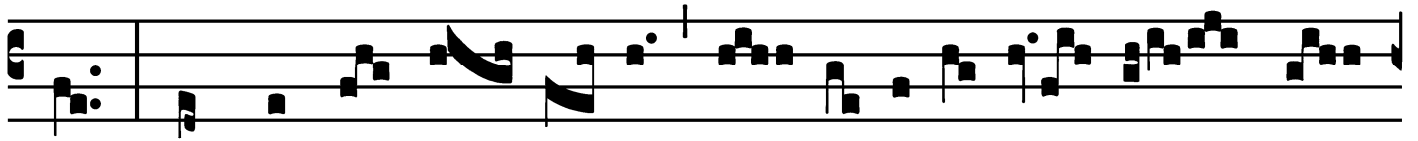
Offert.

8.

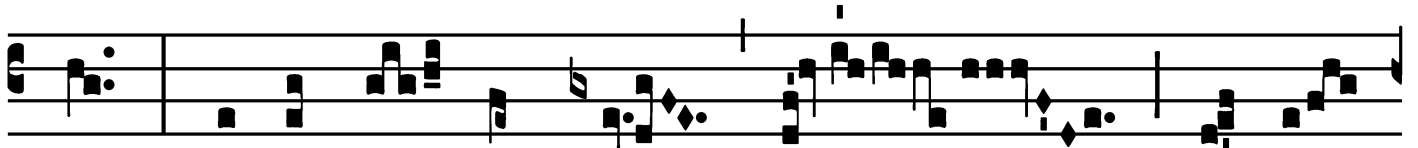
G



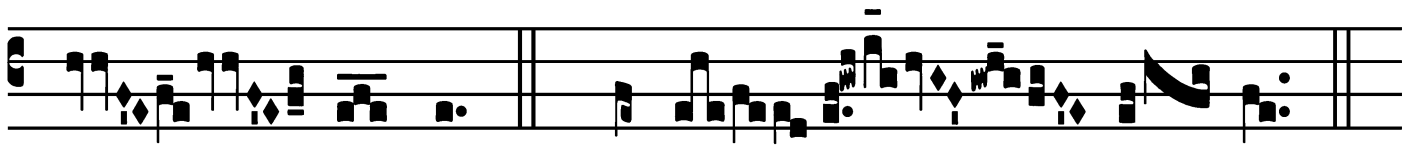
X-áu- di Dé- us * o-ra-ti- ó- nem mé-



am : et ne de-spé- xe- ris de- pre-ca-ti- ó- nem mé-



am : inténde in me, et ex-



áu- di me. *T.P.* Alle- lú- ia.

Votive Mass for the Sick

Communion

Comm. 1.



Llú-mi-na * fá-ci-em tú-am super sérvum tú- um,
et sálvum me fac in tú- a mi- se-ri-córdi- a :
Dó-mine, non confúndar, quó-ni- am invo- cá- vi te.
T. P. Alle- lú- ia.

