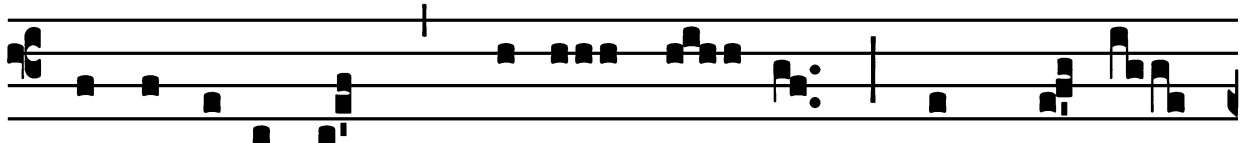


Common of the Dedication of a Church

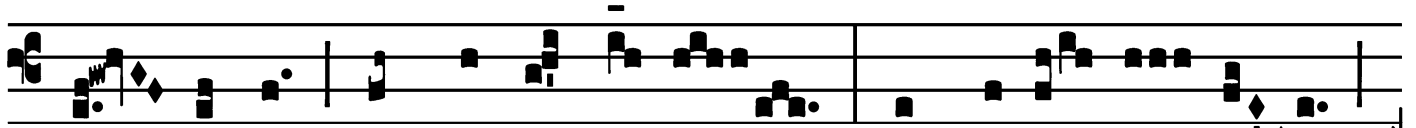
Introit

Intr.
2.

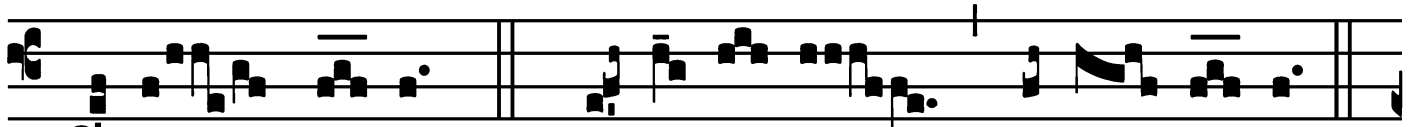
T



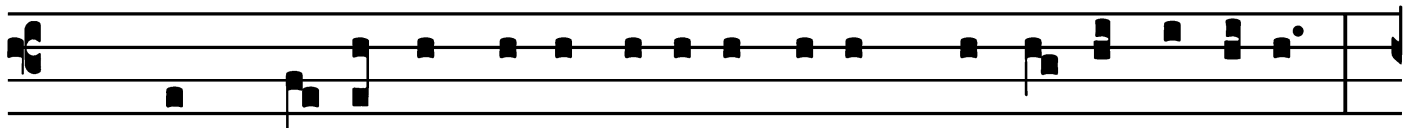
Errí-bi-lis est * lócus í- ste : hic dómus



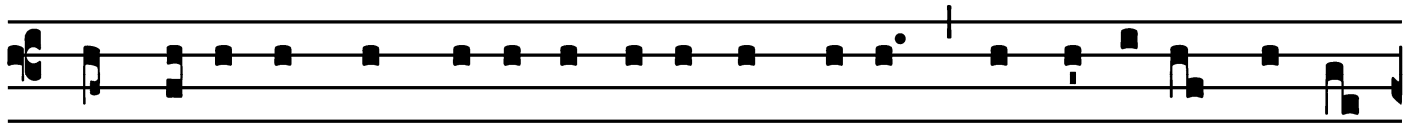
Dé- i est, et pórtā cœ-li : et vocá- bi- tur



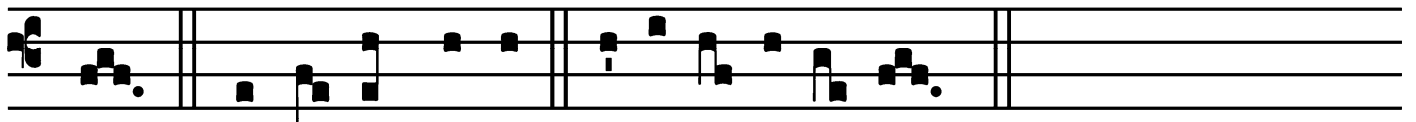
áu-la Dé- i. *T. P.* Alle- lú- ia, alle- lú- ia.



Ps. Quam di- lécta tabernácula tú-a, Dómi-ne virtútum! *



concupíscit, et dé-fi- cit ánima mé-a in átri- a Dómi-



ni. Gló-ri- a Pátri. E u o u a e.

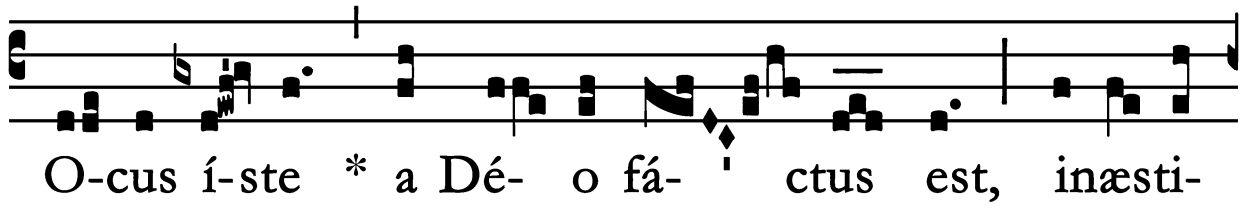
Common of the Dedication of a Church

Gradual

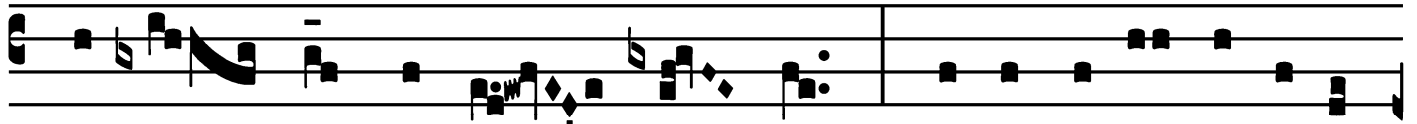
Grad.

5.

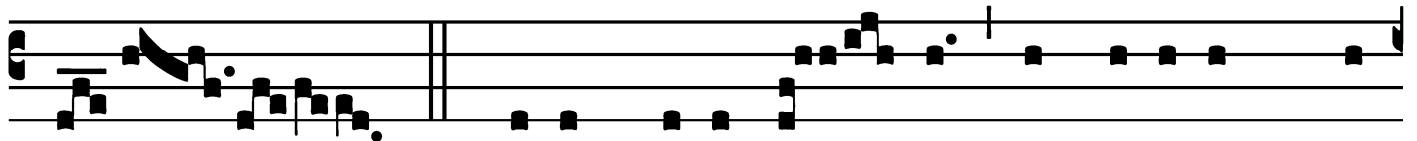
L



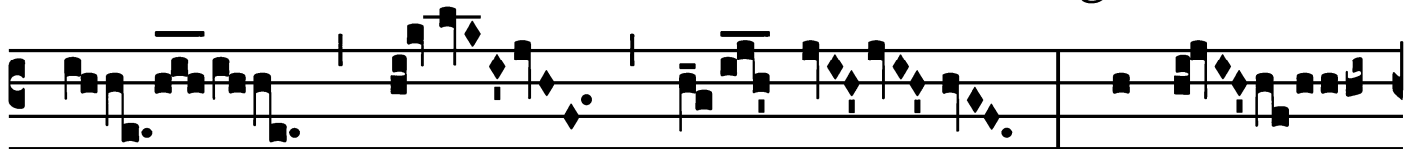
O-cus í-ste * a Dé- o fá- ctus est, inæsti-



má-bi- le sacra- mén- tum, irreprehen-sí-bi- lis

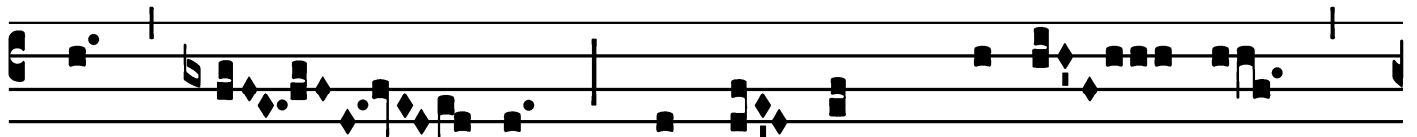


est. V. Dé-us, cú-i ád- stat Angelórum chó-

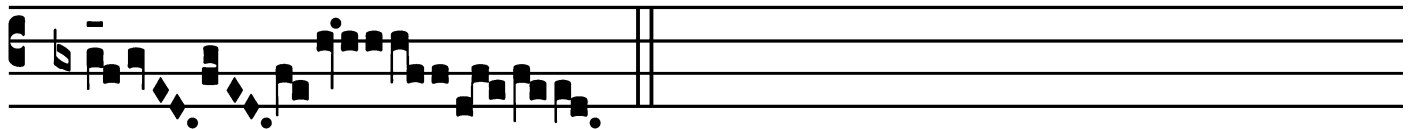


rus,

exáu-



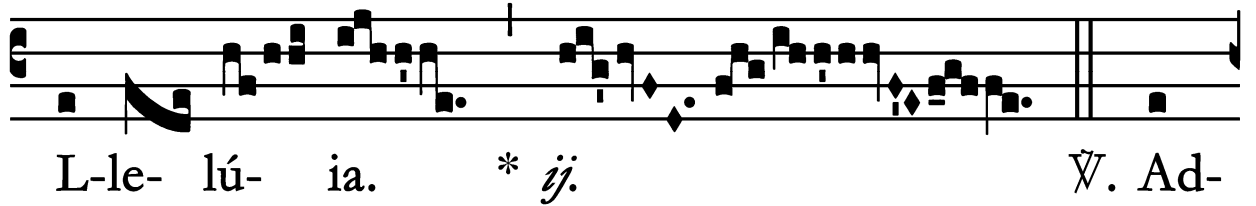
di pré- ces servó- rum * tu- ó- rum.



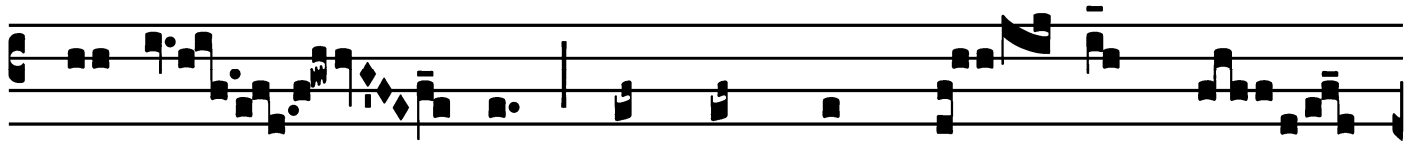
Common of the Dedication of a Church

Alleluia

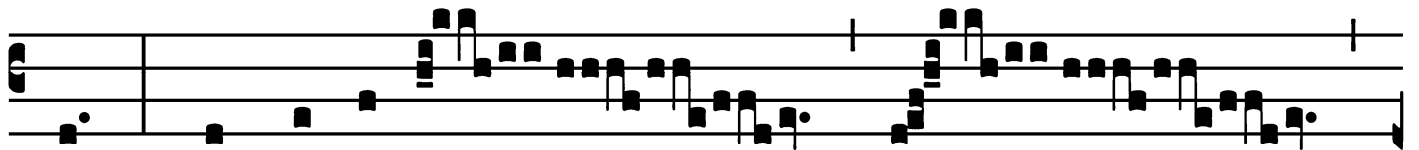
7.
A



L-le- lú- ia. * *ij.* V̇. Ad-



o- rá- bo ad témpulum sán- ctum tú-



um : et confi-té-



bor * nómini tú- o.

Common of the Dedication of a Church

Second Alleluia

(In Paschal Time)

5.
A Lle- lú- ia. *

Ÿ. Bene fundá- ta est dó- mus Dó- mi- ni

su- pra fír- mam * pé- tram.

Common of the Dedication of a Church

Tract

Tract.

8.

Q

UI confí- dunt * in Dó-mino, sic- ut mons

Sí- on : non commové-

bi- tur in ætér- num, qui hábi- tat in Je-

rú- sa- lem. ∇ . Món- tes in

circú-i-tu é- jus : et Dómi- nus

in circú- i-tu pópu-li sú-i, ex hoc

nunc et usque * in sæ-cu-lum.

Common of the Dedication of a Church

Offertory

Offert.

6.

D

Omne Dé- us, * in simpli- ci-tá- te córdis

mé- i lá- tus ób- tu- li u- nivér- sa : et pó-

pulum tú- um, qui repér- tus est, ví- di cum ingé- ni

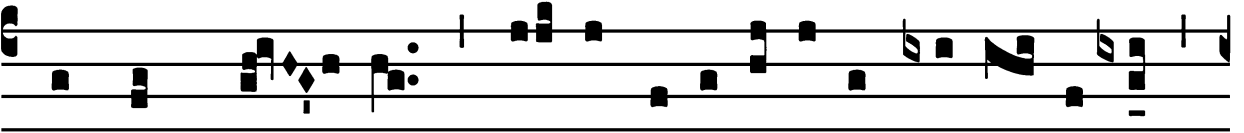
gáu- di- o : Dé- us Is- ra- òl, custó- di hanc vo-

lun- tá- tem, Dómine Dé- us. *T. P.* Alle-

lú- ia.

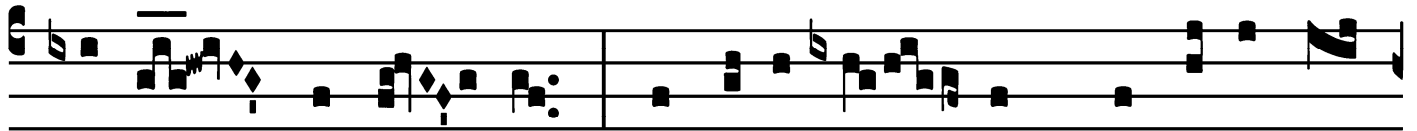
Common of the Dedication of a Church

Communion

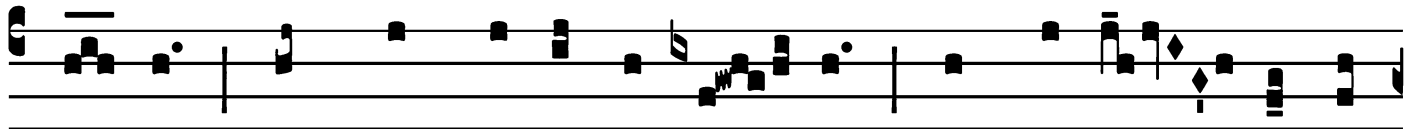
Comm. 5. 

D

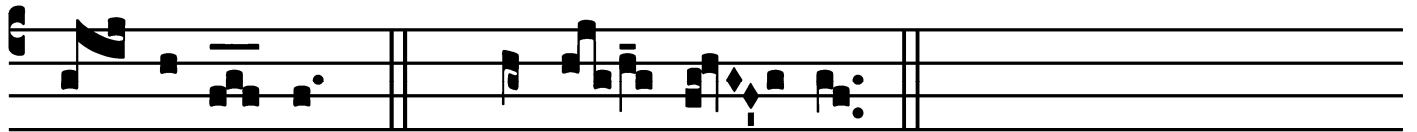
Omus mé- a, * dómus ora-ti-ónis vocá- bi-tur,



dí-cit Dómi- nus : in é-a ó- mnis, qui pé-tit, ác-



ci- pit : et qui quæ-rit, ínve- nit, et pulsán- ti a-



pe- ri-é- tur. *T. P.* Alle- lú- ia.

