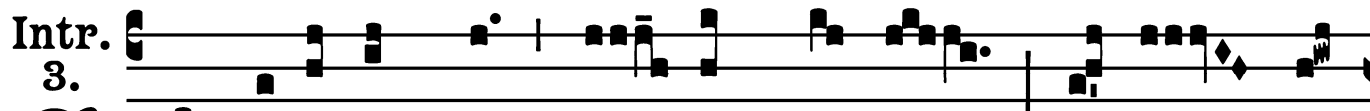


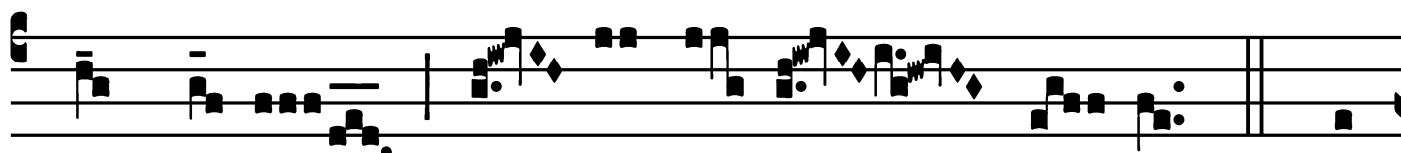
Common of One or Several Sovereign Pontiffs

*Introit*

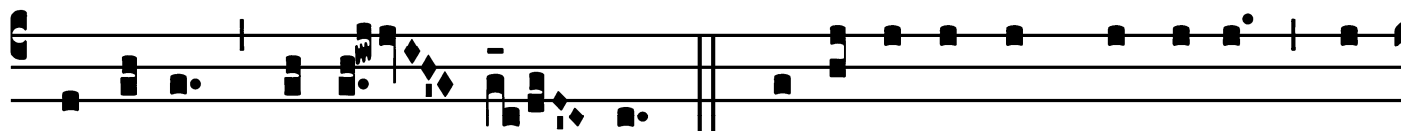


**S**

I dí-li-gis me, \* Sí- mon Pé-tre, pásce á-



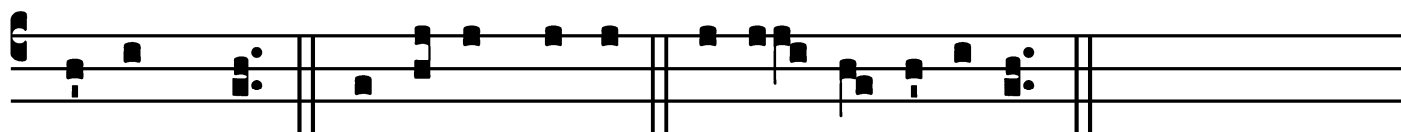
gnos mé- os, pá- sce ó- ves mé- as. *T. P.* Al-



le-lú-ia, alle- lú- ia. *Ps.* Exaltábo te, Dómine, quó-



ni- am suscepísti me : \* nec de-lectásti in-imícos mé- os



super me. Gló-ri- a Pátri. E u o u a e.

Common of One or Several Sovereign Pontiffs

*Gradual*

Grad.

5.

✠

X-ál-tent é- um \* in ecclé- si- a

plé- bis : et in cáthedra se-ni-

ó- rum láudent é- um.

✠. Confi-te-án- tur Dómi-

no mi-se-ri- córdi- æ

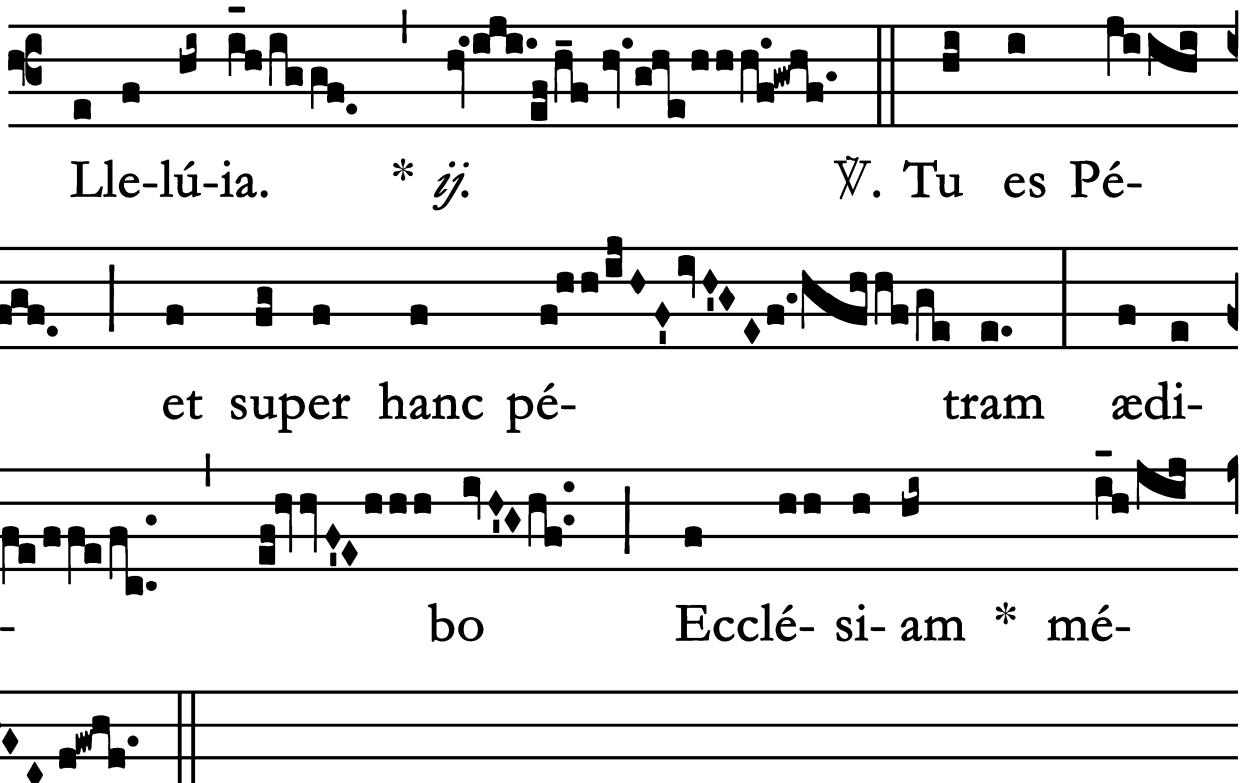
é- jus : et mi- rabí-

li- a é- jus fí- li- is \* hómi-num.

Common of One or Several Sovereign Pontiffs

*Alleluia*

2.  
**A**



Lle-lú-ia. \* *ij.* *Ÿ.* Tu es Pé-  
trus, et super hanc pé- tram ædi-  
fi-cá- bo Ecclé- si- am \* mé-  
am.

Common of One or Several Sovereign Pontiffs

*Second Alleluia*

(In Paschal Time)

4.  
**A** L-le- lú-ia. \*

∇. Constí-tu-es é-os prínci- pes

su- per ómnem tér- ram :

mé-mores é- runt nómi-nis tú- i, \* Dó-

mine.

Common of One or Several Sovereign Pontiffs

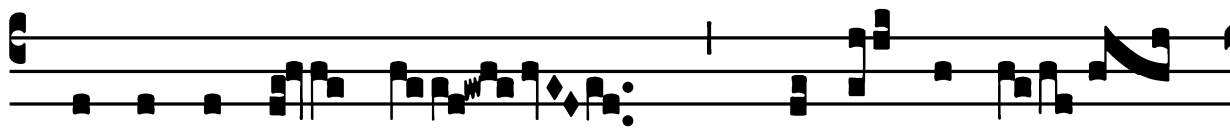
*Tract*

(Page 1 of 2)

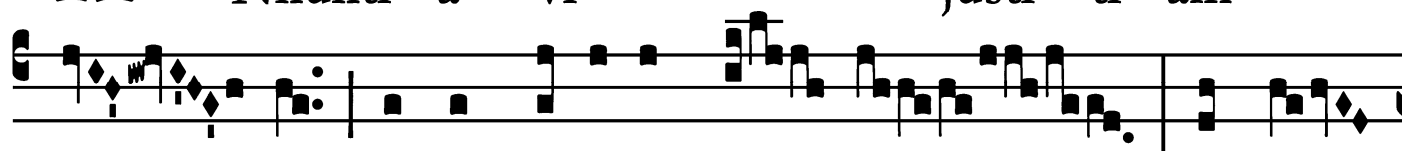
Tract.

8.

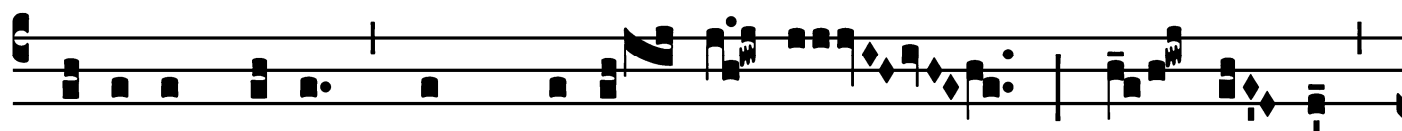
**A**



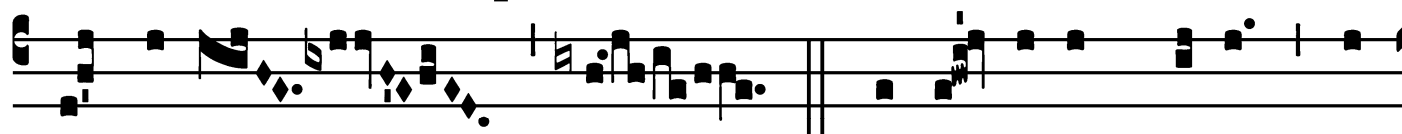
Nnunti- á- vi \* justí- ti- am



tú- am in ecclé-si- a má- gna, ecce

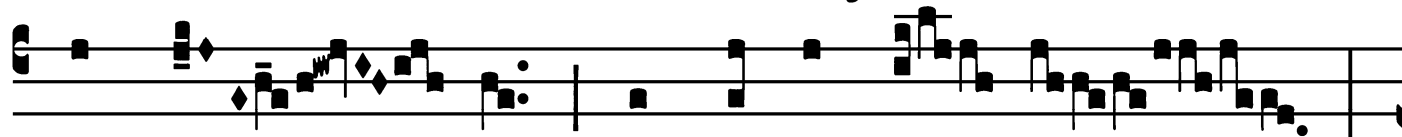


lábi- a mé- a non prohi- bé- bo : Dó- mi- ne,

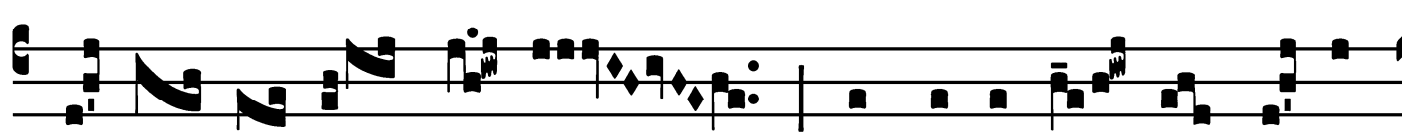


tu scísti.

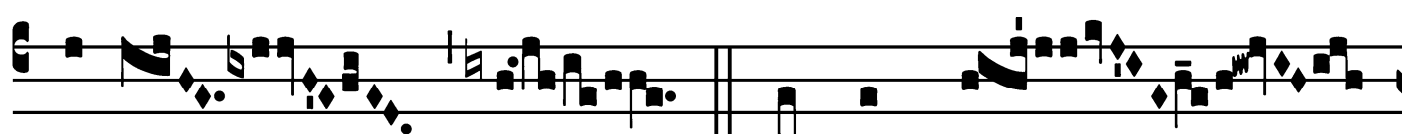
∞. Justí- ti- am tú- am non



abscón- di in córde mé- o :



ve- ri- tá- tem tú- am et sa- lu- tá- re tú- um



dí- xi.

∞. Non abscón-

Common of One or Several Sovereign Pontiffs

*Tract*

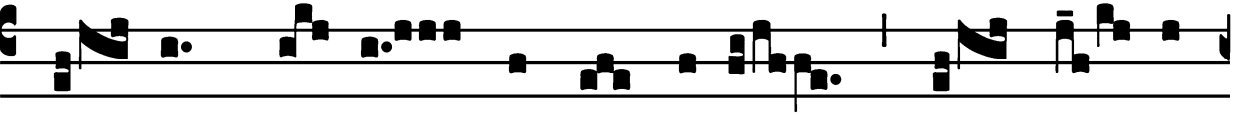
(Page 2 of 2)

di mi-se- ricór-di- am tú- am, et ve-ri- tá-

tem tú- am a concí- li- o \* múlto.

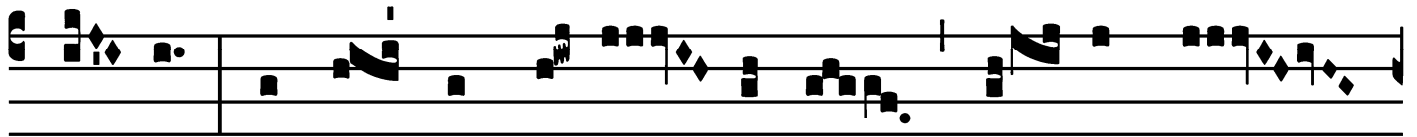
Common of One or Several Sovereign Pontiffs

*Offertory*

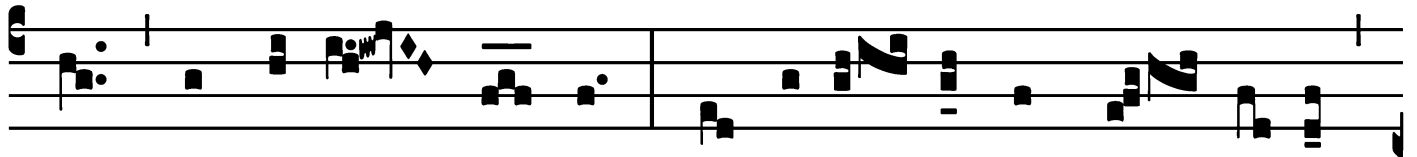
Offert. 3. 

**E**

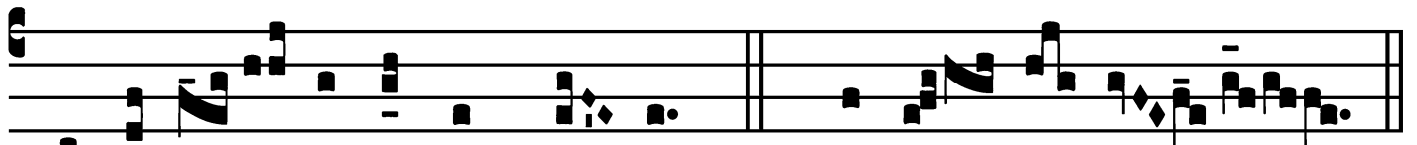
C- ce \* dé- di vérba mé- a in ó- re



tú- o : ecce constí- tu- i te su- per gén-



tes, et super ré- gna, ut evél- las et dé- stru- as,



et ædí- fi- ces et plán- tes. *T. P.* Alle- lú- ia.

Common of One or Several Sovereign Pontiffs

*Communion*

Comm. 6.

U es Pé-trus, \* et su-per hanc pé-tram ædi-  
fi-cábo Ecclé-si-am mé-am. *T.P.* Alle-lú-ia.

