

Common of a Virgin Martyr: Mass I

*Introit*

Intr.

5.

**L**

Oqué-bar \* de testimóni- is tú- is in conspé-

ctu ré- gum, et non confundé- bar : et medi-tá-bar in

mandá- tis tú- is, quæ di-lé- xi ni- mis. *T.P.* Alle-

lú- ia, alle- lú- ia. *Ps.* Be- á- ti immacu- lá- ti in

ví- a : \* qui ámbu- lant in lége Dómi- ni. Gló- ri- a Pátri.

E u o u a e.

Common of a Virgin Martyr: Mass I

*Gradual*

Grad.

8.

**D**

I-le-xísti \* justí- ti- am, et odí- sti

in-iqui- tá-tem.

∞. Proptér-e-a

ún-

xit te Dé- us, Dé- us tú- us, ó-le-o \* læ-

tí- ti-æ.

Common of a Virgin Martyr: Mass I

*Alleluia*

3.  
**A** L-le-lú- ia. \* *ij.*

∩. Addu-cén- tur ré- gi vír- gi- nes post

é- am : pró-xi-mæ é- jus affe- rén-

tur tí- bi \* in

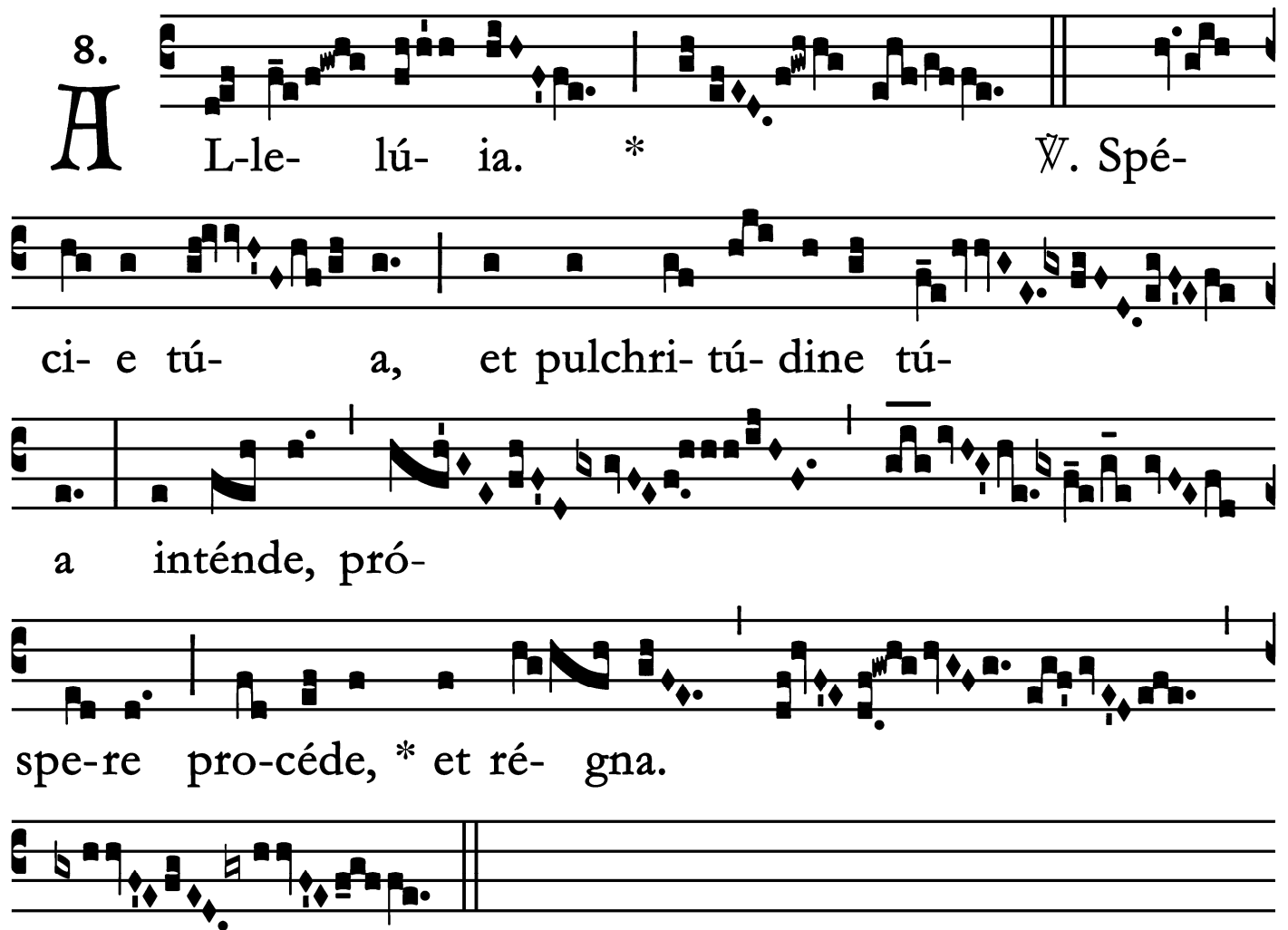
læ-tí- ti- a.

Common of a Virgin Martyr: Mass I

*Second Alleluia*

(In Paschal Time)

8.  
**A** L-le- lú- ia. \*                      ¶. Spé-  
ci- e tú- a, et pulchri- tú- dine tú-  
a inténde, pró-  
spe-re pro-céde, \* et ré- gna.



Common of a Virgin Martyr: Mass I

*Tract*

(Page 1 of 2)

Tract.

8.

V

Eni

\* spónsa Chrísti, á-

cipe

co-

ró-nam, quam tí-bi Dó-minus

præpa-rávit

in æ- térnium :

pro cú- jus

amó- re

sánguinem tú-um

fu-

dí-

sti. V̄. Di-lexí- sti justí-ti- am,

et odí-

sti

in-iqui- tá-tem :

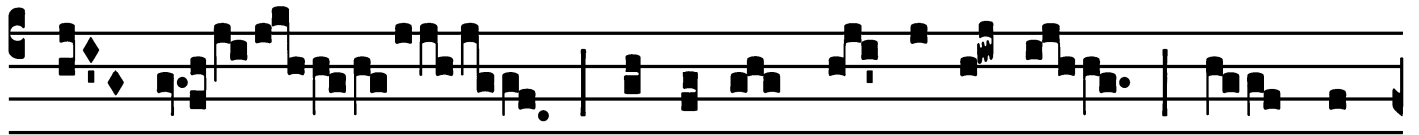
proptér-e- a

únxit te Dé-us, Dé-us

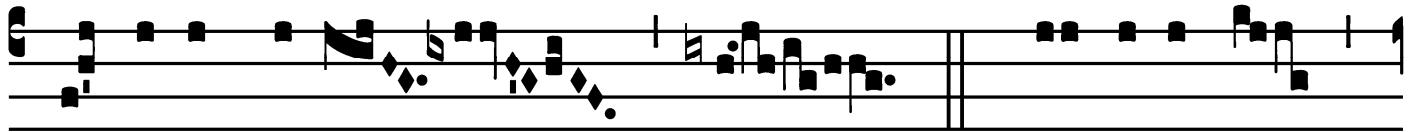
Common of a Virgin Martyr: Mass I

*Tract*

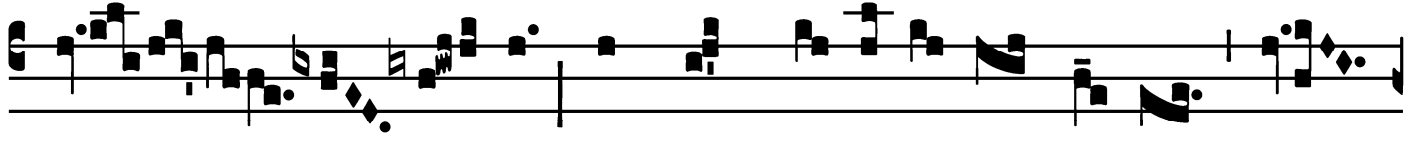
(Page 2 of 2)



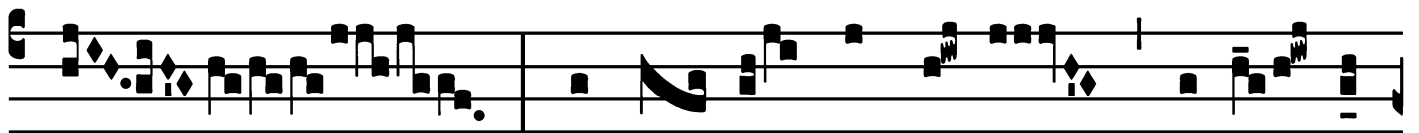
tú- us, ó-le-o læ- tí-ti- æ præ con-



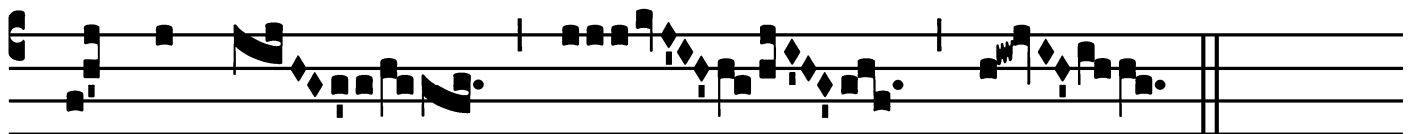
sór-tibus tú- is.  $\forall$ . Spé- ci-e tú-



a, et pulchri-túdi-ne tú- a



intén-de, próspe-re procé- de,



\* et régna.

Common of a Virgin Martyr: Mass I

*Offertory*

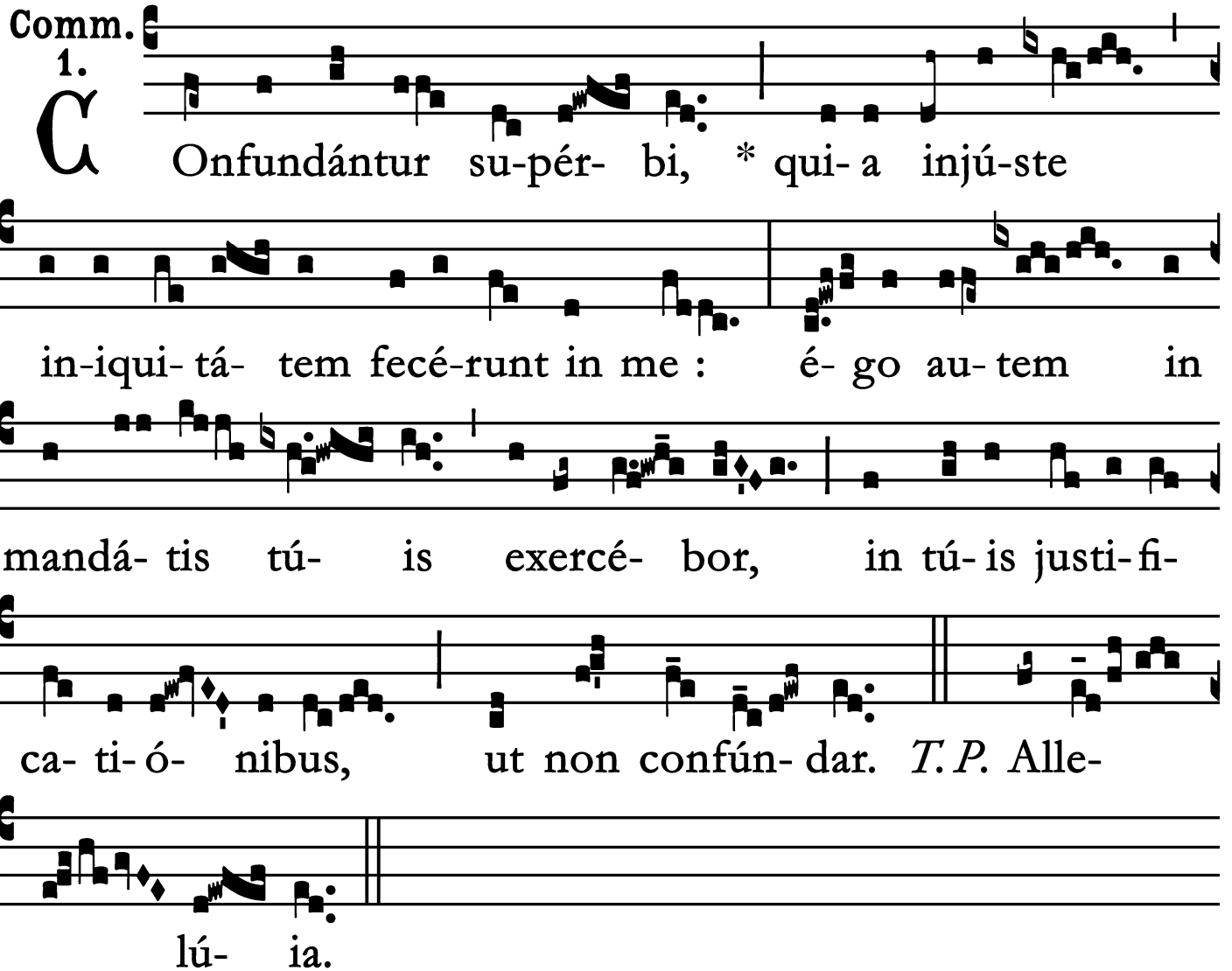
Offert. 4.

**A** F-fe-réntur \* ré-gi vír-gi-nes : pró-ximæ  
é-jus affe-rén-tur tí-bi in læ-tí-ti-a  
et exsulta-ti-ó-ne : addu-cén-tur in tém-  
plum ré-gi Dó-mi-no. *T.P.* Al-le-  
lú-ia.

Common of a Virgin Martyr: Mass I

*Communion*

Comm. 1.



Onfundántur su-pér- bi, \* qui- a injú-ste  
in-iqui- tá- tem fecé-runt in me : é- go au- tem in  
mandá- tis tú- is exercé- bor, in tú- is justi- fi-  
ca- ti- ó- nibus, ut non confún- dar. *T. P.* Alle-  
lú- ia.

