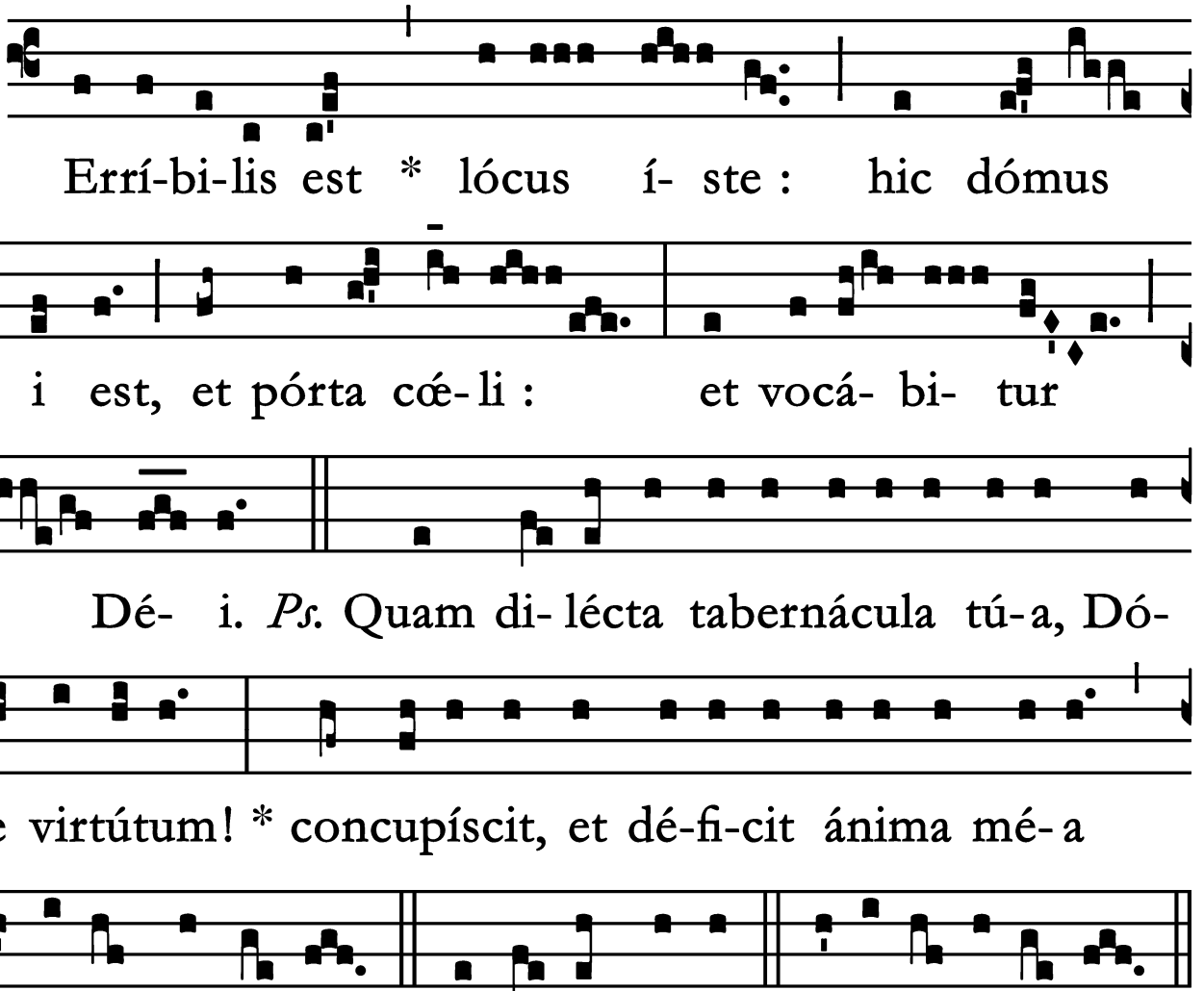


Introit

Intr.
2.
T



Errí-bi-lis est * lócus í- ste : hic dómus

Dé- i est, et pórtā cœ- li : et vocá- bi- tur

áu- la Dé- i. *Ps.* Quam di- lécta tabernácula tú- a, Dó-

mi- ne virtú- tum! * concupí- scit, et dé- fi- cit á- nima mé- a

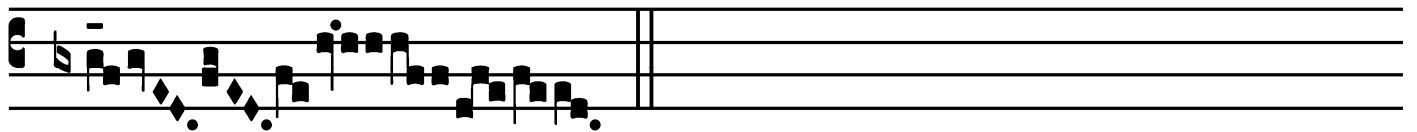
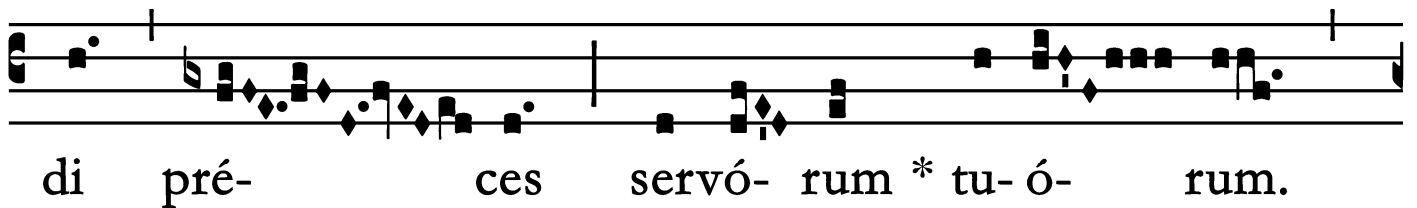
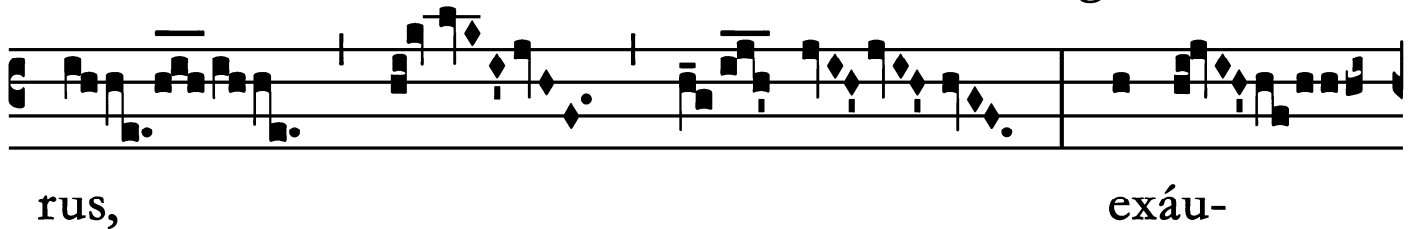
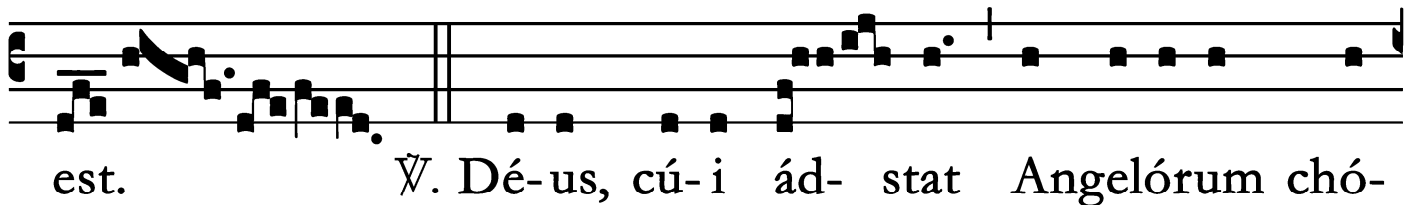
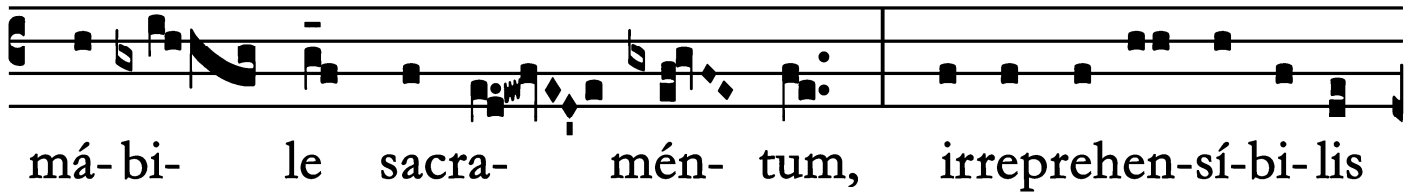
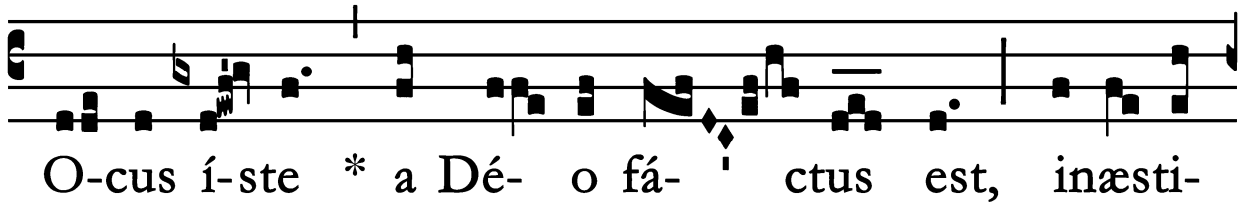
in á- tri- a Dó- mi- ni. Gló- ri- a Pá- tri. E u o u a e.

Gradual

Grad.

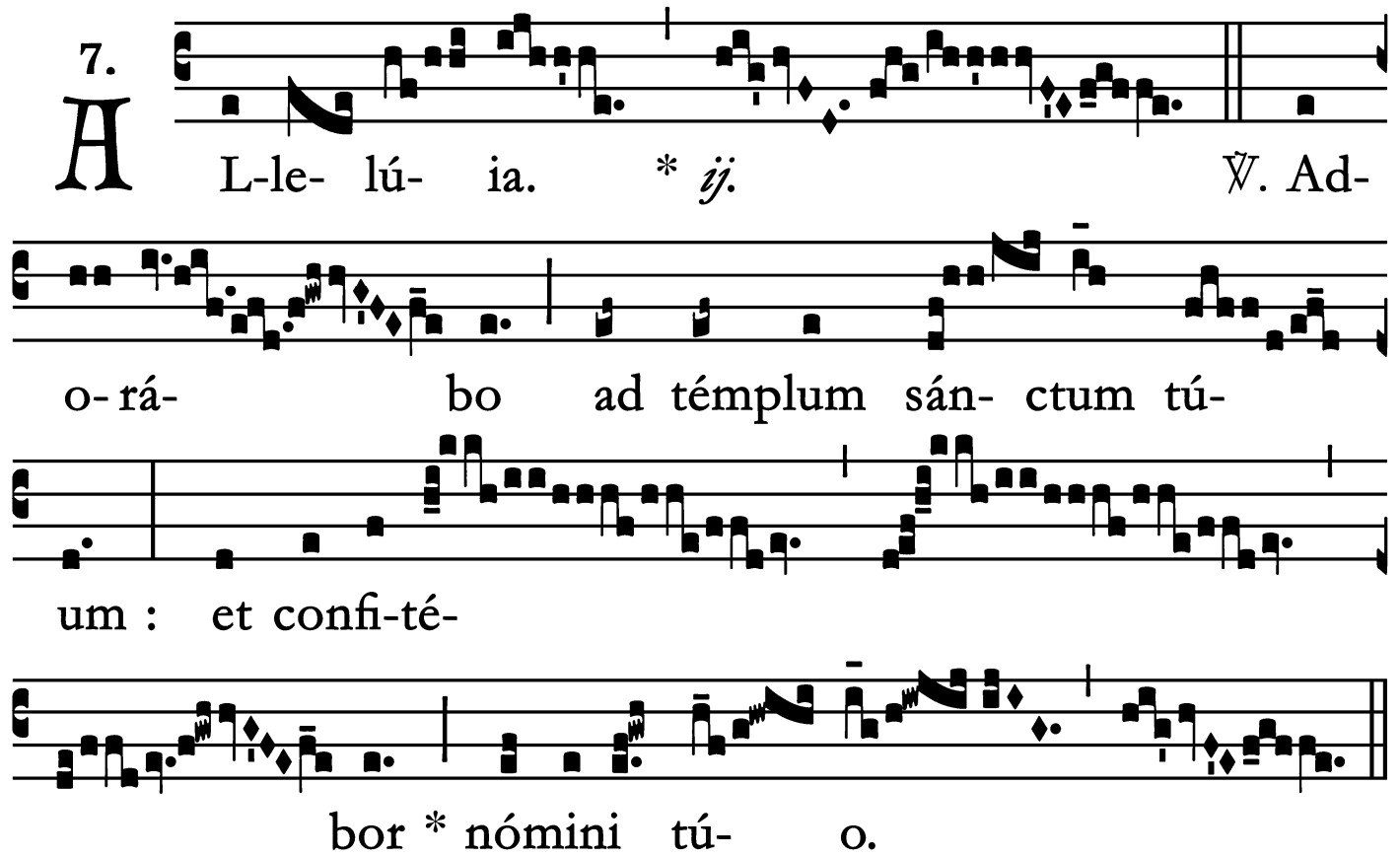
5.

L



Alleluia

7.
A L-le- lú- ia. * *ij.* ∇. Ad-
o- rá- bo ad témplum sán- ctum tú-
um : et confi-té-
bor * nómini tú- o.

The image shows a musical score for a vocal part. It consists of four staves of music. The first staff begins with a large 'A' and the number '7.'. The lyrics are written below the notes. The music is in a simple, melodic style with a piano accompaniment line. The lyrics are: 'L-le- lú- ia. * ij. ∇. Ad- o- rá- bo ad témplum sán- ctum tú- um : et confi-té- bor * nómini tú- o.'

Offertory

Offert.
6.



Domine Dé- us, * in simpli- ci-tá- te córdis
mé- i læ- tus ób- tu- li u- nivér- sa : et pó-
pulum tú- um, qui repér- tus est, ví- di cum ingé- ni
gáu- di- o : Dé- us Is- ra- òl, custó- di hanc vo-
lun- tá- tem, Dómine Dé- us, al- le-
lú- ia.

Communion

Comm. 5.



D Omus mé- a, * dómus ora-ti-ónis vocá- bi-tur,
dí-cit Dómi- nus : in é- a ó- mnis, qui pé-tit, ác-
ci- pit : et qui quæ-rit, ínve- nit, et pulsán- ti a-
pe- ri-é- tur.