

Introit

Intr.

8.

D

Ispér- sit, * dé- dit paupé- ri- bus : justí-

ti- a é- jus má- net in sáe- cu-lum sáecu- li :

cór- nu é-jus exaltá-bi-tur in gló- ri- a.

Ps. Be-átus vir qui tímet Dómi-num : * in mandá-tis é-jus

vó-let nimis. Gló-ri- a Pátri. E u o u a e.

Gradual

Grad.
2.

D

Ispérsit, * dé- dit paupé- ri- bus : justí-

ti- a é- jus má- net in sáe- cu- lum

sáe- cu- li.

∇. Pó tens in

tér-

ra é- rit

sémen é-

jus : ge-nerá-ti-o rectó-

rum

* be- nedicé- tur.

Alleluia

1.
A L-le- lú- ia. * *ij.*

Ÿ. O Jó- achim sán- cte, cón- jux An- næ,
pá- ter ál- mæ Vír- ginis, hic fá- mu- lis cónfer
sa-lú- tis * ó- pem.

Feast of St. Joachim, Father of the Blessed Virgin Mary, Confessor - August 16

Offertory

Offert. 1.

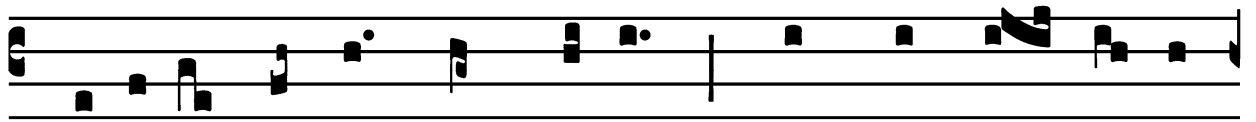
G Ló-ri- a * et ho-nó- re co-ro-
ná- sti é- um : et consti- tu- í- sti é-
um super ó- pe- ra má- nu- um tu- á-
rum, Dó- mine.

Communion

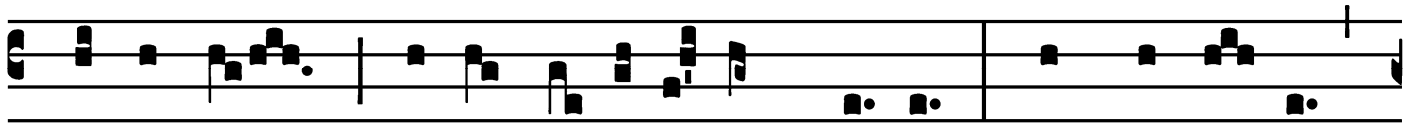
Comm.

7.

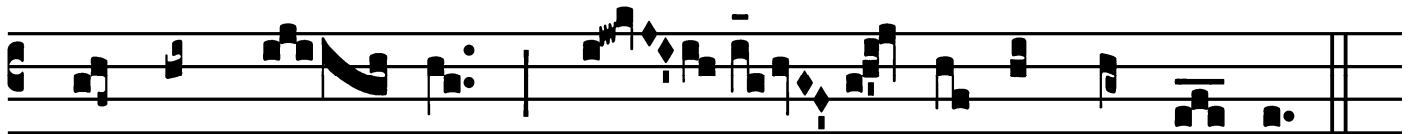
F



Idé-lis sérvus * et prúdens, quem constí- tu- it



Dómi-nus super famí-li- am sú- am : ut det íl- lis



in témpo- re trí- ti- ci mensú- ram.