

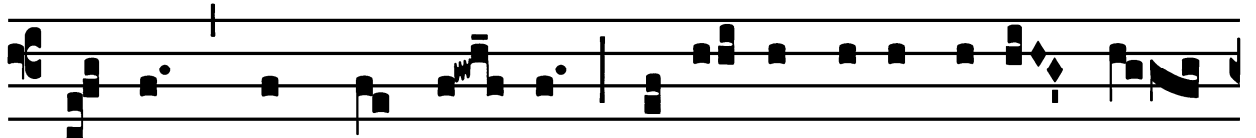
Our Lady of Guadalupe - December 12

Introit

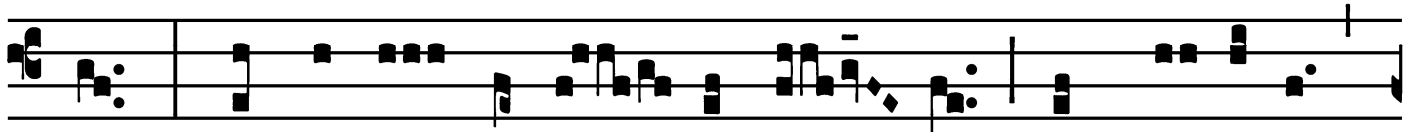
Intr.

2.

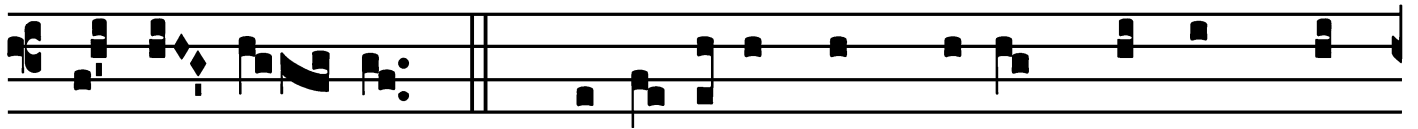
S



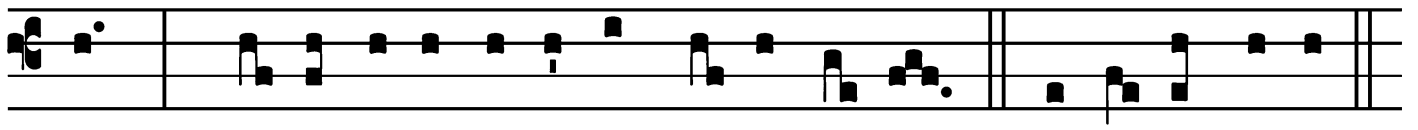
Alve * sáncta Pá- rens, ení- xa pu-érpera Ré-



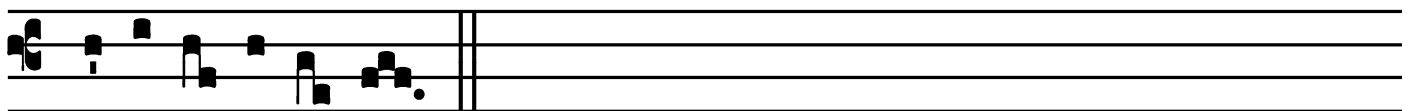
gem, qui cóe-lum terrám-que ré- git in sǎ-cu-la



sǎ-cu- ló- rum. *Ps.* Eructávit cor mé-um vérbum bó-



num : * dí-co égo ópe-ra mé- a ré-gi. Gló-ri- a Pátri.



E u o u a e.

Our Lady of Guadalupe - December 12

Gradual

Grad.

5.

Q

Uæ est í- sta, * quæ progré- di-tur qua-si

auró- ra consúrgens, púlchra ut lú- na, e-

lé-cta ut sol?

∇. Qua-si árcus

re-fúlgens

in-

ter nébu-las gló- ri- æ, et qua-si flos ro-

sá- rum

in di-ébus * vér-

nis.

Our Lady of Guadalupe - December 12

Alleluia

8.
A L-le- lú- ia. * *ij.*

Ÿ. Fló- res apparu-é- runt in

tér-ra nó- stra, témpus puta-ti-ó- nis * ad-

vé- nit.

Our Lady of Guadalupe - December 12

Offertory

Offert.

5.

E

- lé- gi, * et sancti-fi-cá- vi ló- cum í- stum,

ut sit i- bi nó- men mé-

um, et permá- ne-ant ócu-li mé- i et cor

mé- um i- bi cún-ctis di- é- bus.

Our Lady of Guadalupe - December 12

Communion

Comm. 8.



N ON fé- cit * tá- li- ter ómni na- ti- ó- ni : et ju-
dí- ci- a sú- a non mani- festá- vit é- is.