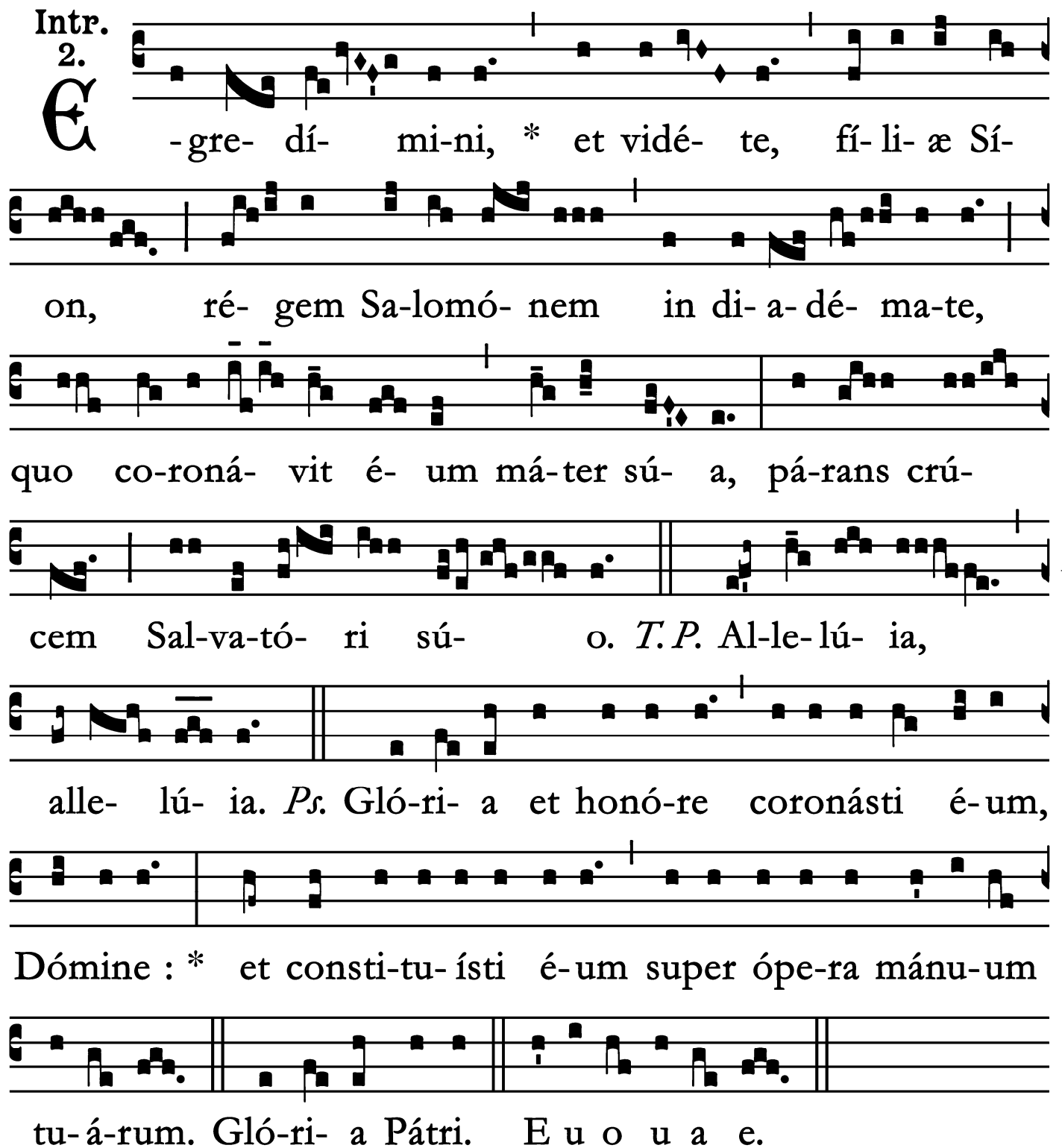


Ss. Spineæ Coronæ D. N. Jesu Christi - Per annum
Proprium Sanctorum pro aliquibus locis

Introit

Intr.
2.
E



-gre- dí- mi-ni, * et vidé- te, fí- li- æ Sí-
on, ré- gem Sa-lomó- nem in di- a- dé- ma- te,
quo co-roná- vit é- um má-ter sú- a, pá-rans crú-
cem Sal-va-tó- ri sú- o. *T.P.* Al-le-lú- ia,
alle- lú- ia. *Ps.* Gló-ri- a et honó-re coronásti é-um,
Dómine : * et consti-tu-ísti é-um super ópe-ra mánu-um
tu-á-rum. Gló-ri- a Pátri. E u o u a e.

Ss. Spineæ Coronæ D. N. Jesu Christi - Per annum

Gradual

(Page 1 of 2)

Grad.

3.

C

Oró- na * áu- re- a

super cá- put é- jus : exprés-

sa sígno sancti- tá- tis, gló-ri- a

honó- ris, et ópus for- ti- tú- di-

nis. *∇*. Quóni- am præ- vení- sti é-

um in bene- di- cti- ó- ni- bus dulcé-

di- nis : posu- í- sti in cá- pi- te

Ss. Spineæ Coronæ D. N. Jesu Christi - Per annum

Gradual

(Page 2 of 2)

é-jus coró- nam de lápi-de * pre- ti-

ó- so.

Ss. Spineæ Coronæ D. N. Jesu Christi - Per annum

Alleluia

1.
A

L- le- lú- ia. * *ij.*

∇. Coró- na tri- bu- la- ti- ó- nis effló-
ru- it in co- rónam gló- ri- æ, et sér- tum * ex- sulta-
ti- ó- nis.

The image shows a musical score for the Alleluia. It consists of four staves of music. The first staff begins with a large initial 'A' and the number '1.' above it. The lyrics are written below the notes. The second staff starts with a double bar line and a fermata over the first note. The third and fourth staves continue the melody and lyrics. The lyrics are: 'L- le- lú- ia. * ij.' on the first staff, '∇. Coró- na tri- bu- la- ti- ó- nis effló- ru- it in co- rónam gló- ri- æ, et sér- tum * ex- sulta- ti- ó- nis.' on the second, third, and fourth staves. The music is written in a style typical of a Graduale Romanum, with square notes and a simple melodic line.

Ss. Spineæ Coronæ D. N. Jesu Christi - Per annum

Tract

(After Septuagesima - Page 1 of 2)

Tract.

8.

I

Ndu- it é- um * DÓ- minus vestimén-

tis sa- lú- tis, et indu- mén- to ju- stí-

ti- æ, qua- si spónsum deco- rá-

tum coró- na. \forall . Coró- na

tribu- la- ti- ó- nis efflóru- it in coró-

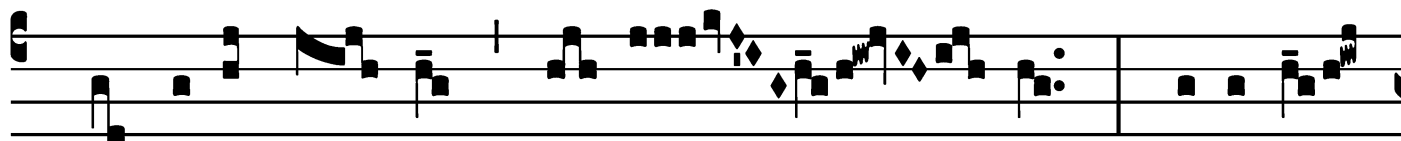
nam gló- ri- æ, et

sér- tum exsulta- ti- ó- nis.

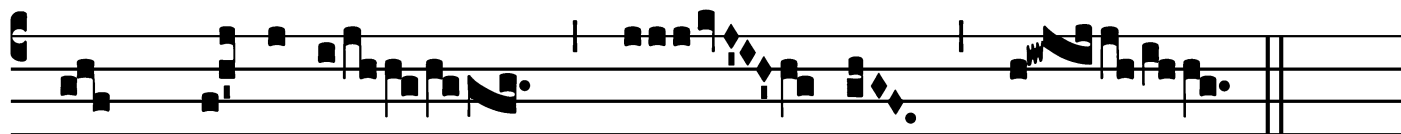
Ss. Spineæ Coronæ D. N. Jesu Christi - Per annum

Tract

(Page 2 of 2)



Ÿ. Accépit ré- gnum de- có- ris, di- adé-



ma * spe- ci- é- i.

Ss. Spineæ Coronæ D. N. Jesu Christi - Per annum

Alleluia

(In Paschal Time)

1.
A

L- le- lú- ia. * *ij.*

∇. Coró- na áure- a super

cá- put é- jus : expréssa sígno

san- cti- tá- tis,

gló-ri- a ho- nó- ris, et ópus * forti- tú- di-

nis.

The image shows a musical score for the Alleluia. It consists of seven staves of music. The first staff begins with a large initial 'A' and the number '1.'. The lyrics are written below the notes. The music is in a simple, rhythmic style with a clear melody line and a supporting bass line. The lyrics are in Latin and include a large initial 'A' and a number '1.'.

Ss. Spineæ Coronæ D. N. Jesu Christi - Per annum

Second Alleluia

(In Paschal Time)

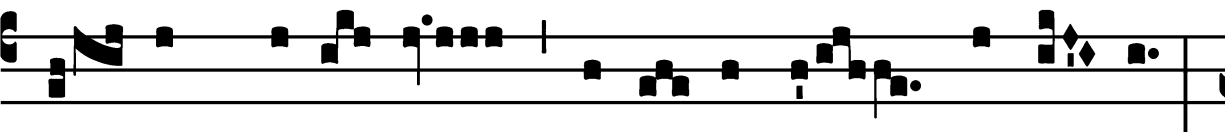
7.
A L- le- lú- ia. *

∇. Tí- bi gló- ri- a, ho- sán- na : tí- bi tri- úm- phus et vi- ctó- ri- a : tí- bi súm- mæ láu- dis et honó- ris * co- ró- na.

Ss. Spineæ Coronæ D. N. Jesu Christi - Per annum

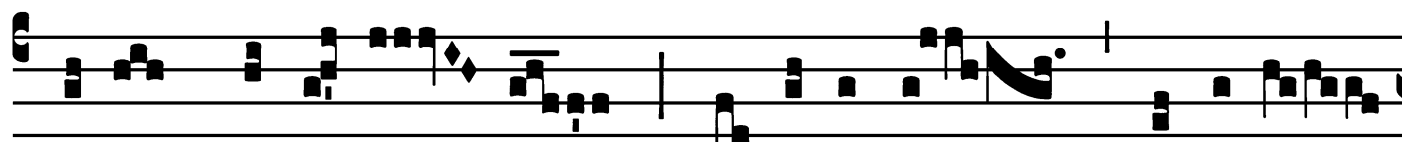
Offertory

Offert.
4.

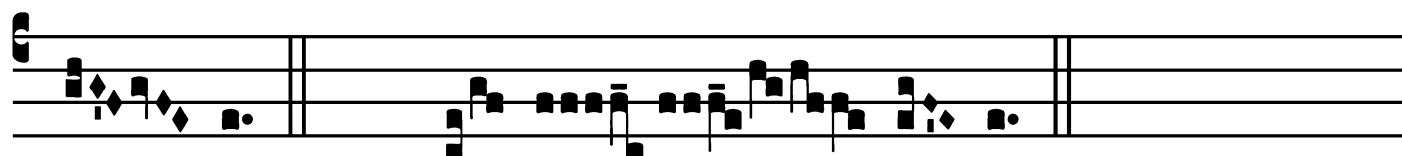


T

U- am coró- nam * ado- rámus Dómi- ne :



tú- am glo- ri- ó- sam re- có- limus passi- ó-



nem. *T.P.* Al- le- lú- ia.

Ss. Spineæ Coronæ D. N. Jesu Christi - Per annum

Communion

Comm.

2.

L

Æ-tá-re, * má-ter nóstra, qui- a dábit Dómi-

nus cápi-ti tú- o augmén-ta gra-ti-á- rum, et coró-

na ínclý- ta pró-te- get te. *T. P.* Alle- lú- ia.

