

Dedication of the Archbasilica of Our Savior - November 9

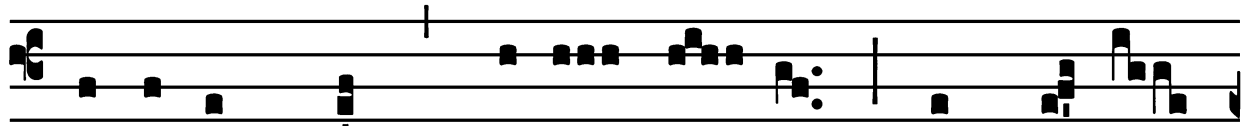
Mass for the Dedication of a Church : *Terribilis est*

Introit

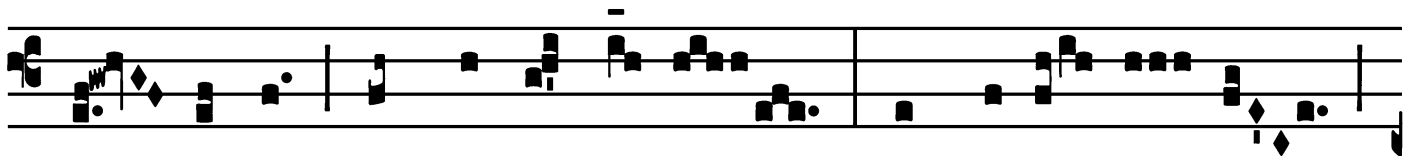
Intr.

2.

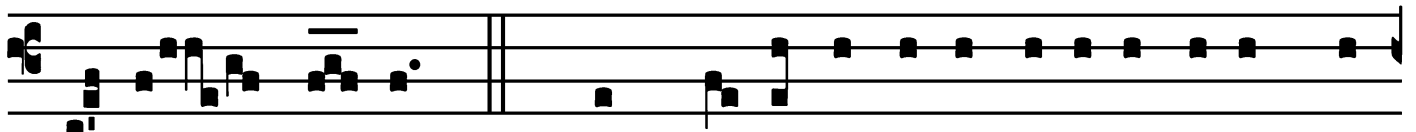
T



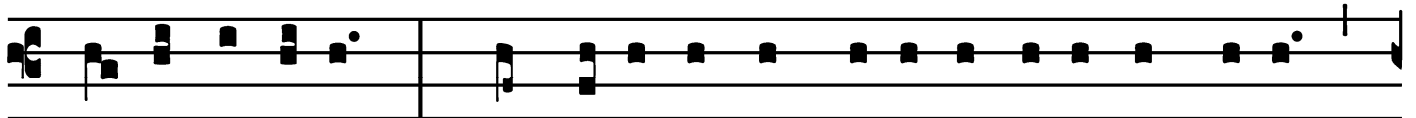
Errí-bi-lis est * lócus í- ste : hic dómus



Dé- i est, et pórtā cœ-li : et vocá- bi- tur



áu-la Dé- i. *Ps.* Quam di- lécta tabernácula tú-a, Dó-



mi-ne virtútum! * concupíscit, et dé-fi- cit ánima mé-a



in átri- a Dómi- ni. Gló- ri- a Pátri. E u o u a e.

Dedication of the Archbasilica of Our Savior - November 9

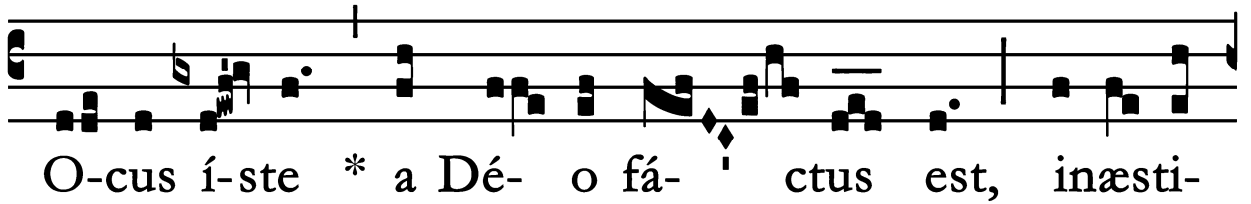
Mass for the Dedication of a Church : *Terribilis est*

Gradual

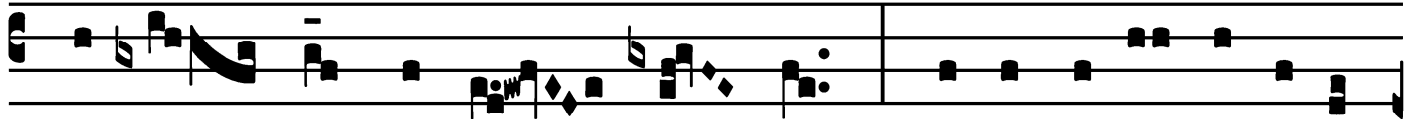
Grad.

5.

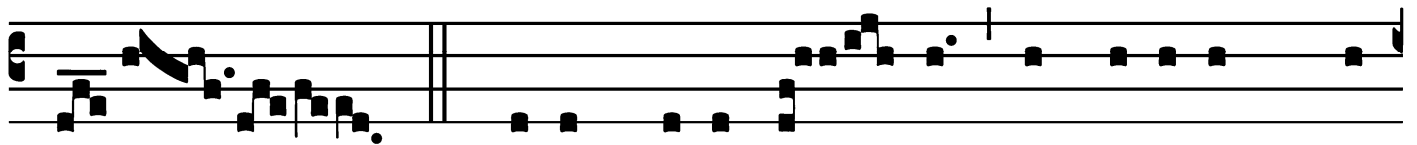
L



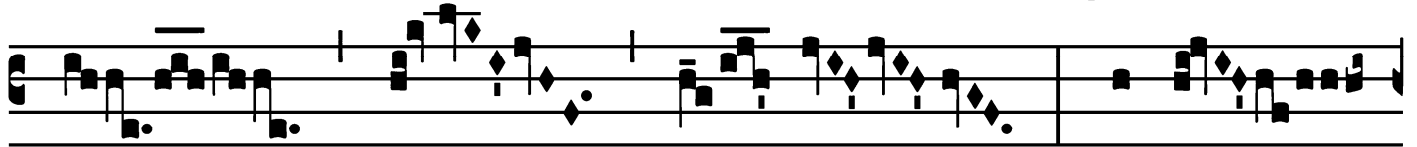
O-cus í-ste * a Dé- o fá- ctus est, inæsti-



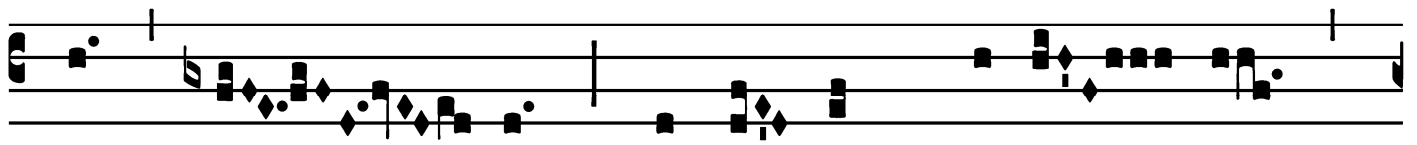
má-bi- le sacra- mén- tum, irreprehen-sí-bi-lis



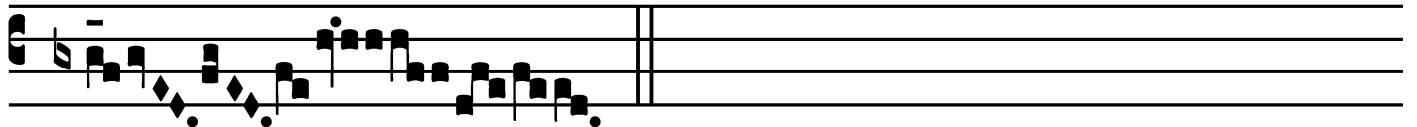
est. *V.* Dé-us, cú-i ád- stat Angelórum chó-



rus, exáu-



di pré- ces servó- rum * tu- ó- rum.

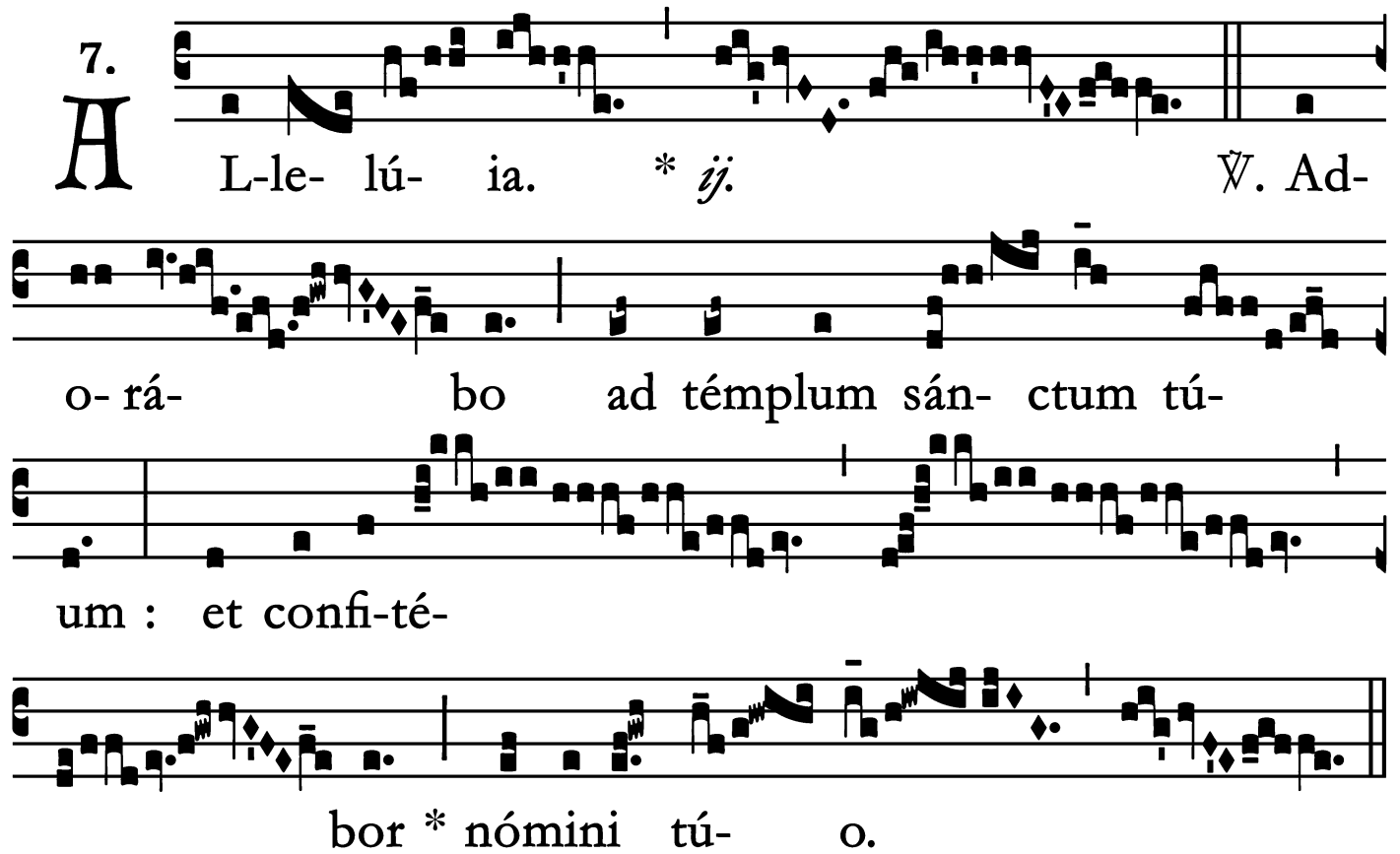


Dedication of the Archbasilica of Our Savior - November 9

Mass for the Dedication of a Church : *Terribilis est*

Alleluia

7.
A L-le- lú- ia. * *ij.* \checkmark . Ad-
o- rá- bo ad témpulum sán- ctum tú-
um : et confi-té-
bor * nómini tú- o.



Dedication of the Archbasilica of Our Savior - November 9

Mass for the Dedication of a Church : *Terribilis est*

Offertory

Offert. 6.

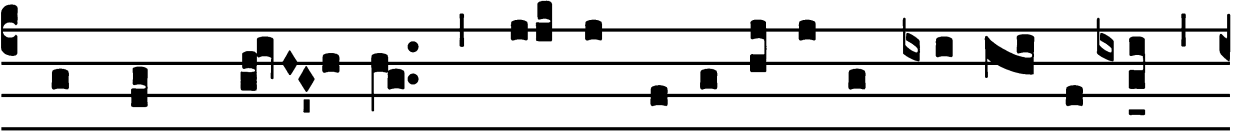
Domine Dé- us, * in simpli- ci-tá- te córdis
mé- i læ- tus ób- tu- li u- nivér- sa : et pó-
pulum tú- um, qui repér- tus est, ví- di cum ingé- ni
gáu- di- o : Dé- us Is- ra- òl, custó- di hanc vo-
lun- tá- tem, Dómine Dé- us, al- le-
lú- ia.

Dedication of the Archbasilica of Our Savior - November 9

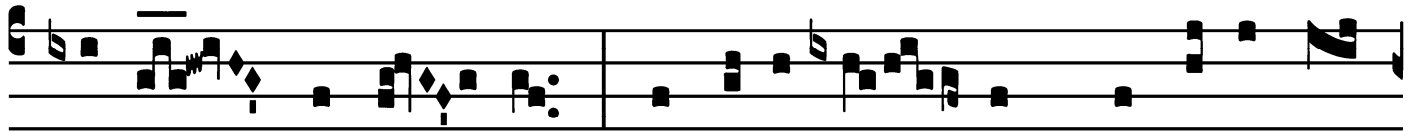
Mass for the Dedication of a Church : *Terribilis est*

Communion

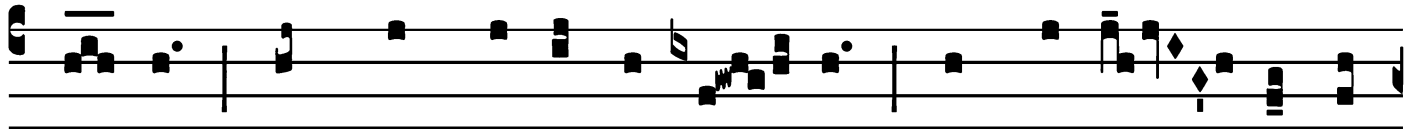
Comm. 5.



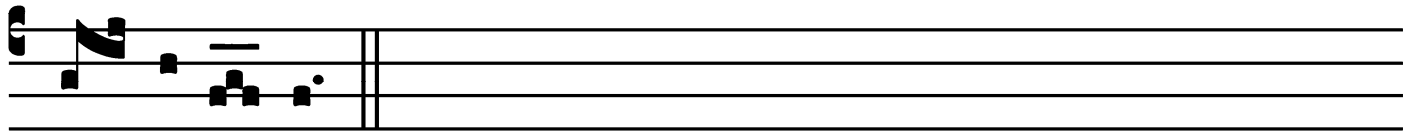
D Omus mé- a, * dómus ora-ti-ónis vocá- bi-tur,



dí-cit Dómi- nus : in é-a ó- mnis, qui pé-tit, ác-



ci- pit : et qui quæ-rit, ínve- nit, et pulsán- ti a-



pe- ri-é- tur.

