

Dedication of the Basilicas of Ss. Peter and Paul – November 18

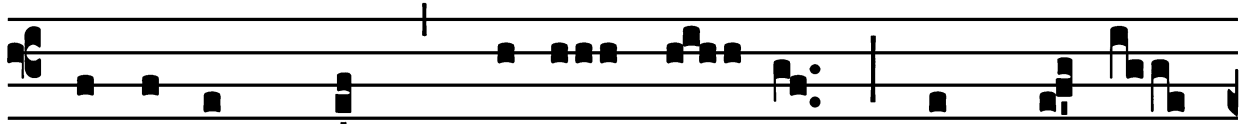
Mass for the Dedication of a Church : *Terribilis est*

*Introit*

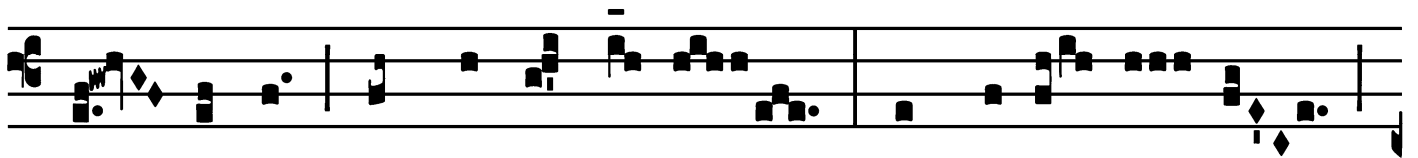
Intr.

2.

**T**



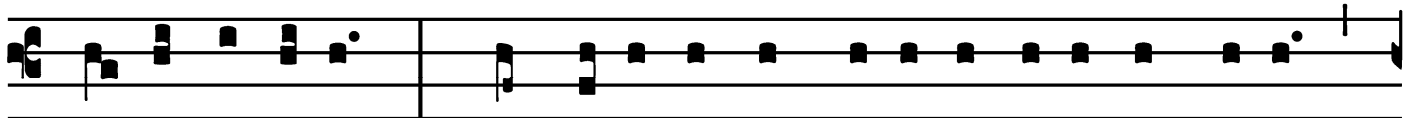
Errí-bi-lis est \* lócus í- ste : hic dómus



Dé- i est, et pórtā cœ-li : et vocá- bi- tur



áu-la Dé- i. *Ps.* Quam di- lécta tabernácula tú-a, Dó-



mi-ne virtútum! \* concupíscit, et dé-fi- cit ánima mé-a



in átri- a Dómi- ni. Gló- ri- a Pátri. E u o u a e.

Dedication of the Basilicas of Ss. Peter and Paul - November 18

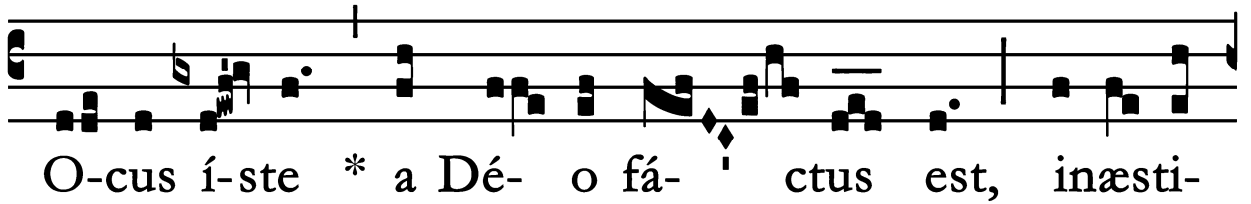
Mass for the Dedication of a Church : *Terribilis est*

*Gradual*

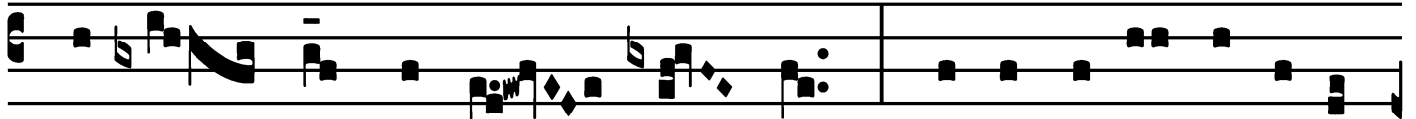
Grad.

5.

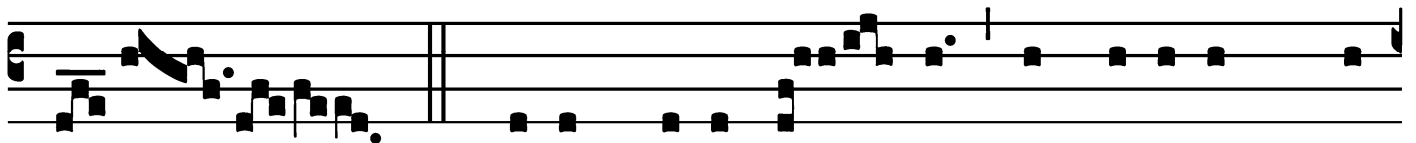
**L**



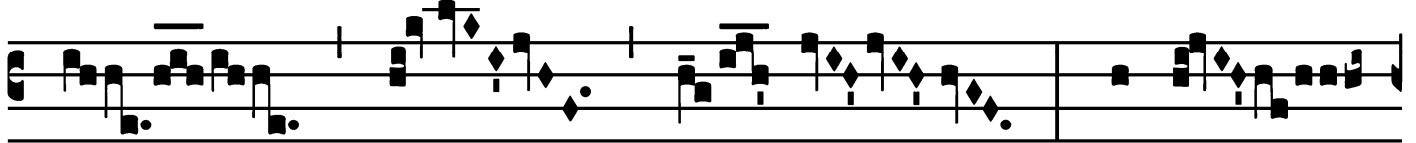
O-cus í-ste \* a Dé- o fá- ctus est, inæsti-



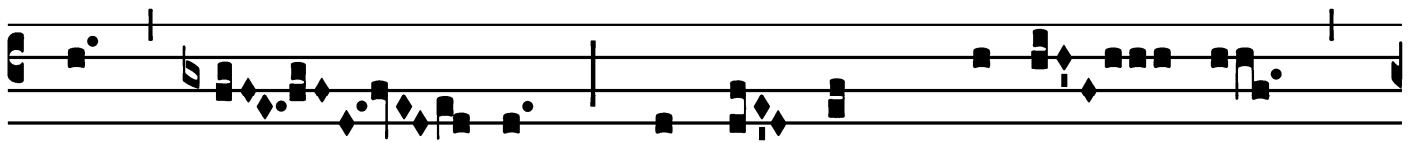
má-bi- le sacra- mén- tum, irreprehen-sí-bi-lis



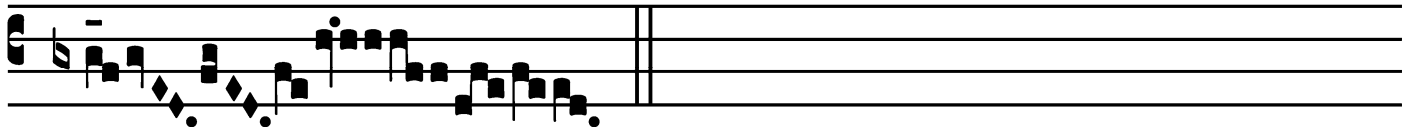
est. *V.* Dé-us, cú-i ád- stat Angelórum chó-



rus, exáu-



di pré- ces servó- rum \* tu- ó- rum.

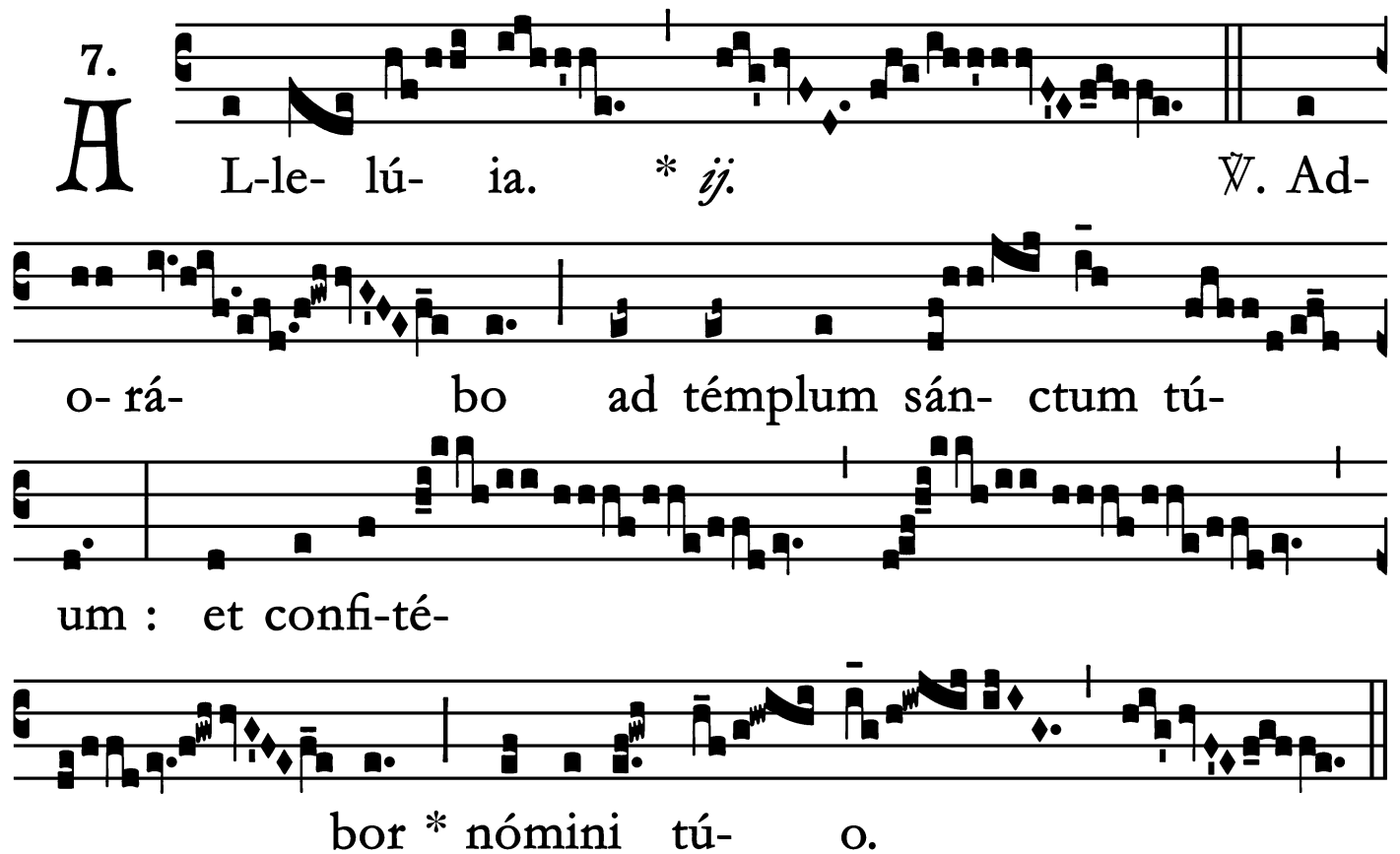


Dedication of the Basilicas of Ss. Peter and Paul - November 18

Mass for the Dedication of a Church : *Terribilis est*

*Alleluia*

7.  
**A** L-le- lú- ia. \* *ij.*  $\checkmark$ . Ad-  
o- rá- bo ad témpulum sán- ctum tú-  
um : et confi-té-  
bor \* nómini tú- o.



Dedication of the Basilicas of Ss. Peter and Paul - November 18

Mass for the Dedication of a Church : *Terribilis est*

# Offertory

Offert.

6.

**D**

Domine Dé- us, \* in simpli- ci-tá- te córdis

mé- i læ- tus ób- tu- li u- nivér- sa : et pó-

pulum tú- um, qui repér- tus est, ví- di cum ingé- nti

gáu- di- o : Dé- us Is- ra- òl, custó- di hanc vo-

lun- tá- tem, Dómine Dé- us, al- le-

lú- ia.

Dedication of the Basilicas of Ss. Peter and Paul - November 18

Mass for the Dedication of a Church : *Terribilis est*

## Communion

Comm. 5.

**D** Omus mé- a, \* dómus ora-ti-ónis vocá- bi-tur,  
dí-cit Dómi- nus : in é-a ó- mnis, qui pé-tit, ác-  
ci- pit : et qui quæ-rit, ínve- nit, et pulsán- ti a-  
pe- ri-é- tur.

