

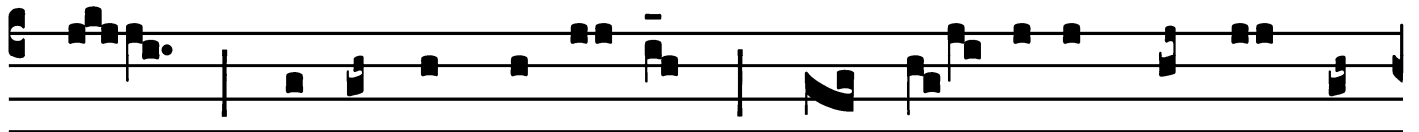
## Introit

Intr.  
3.

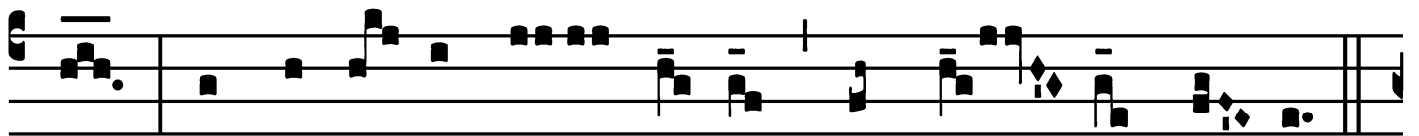


**B**

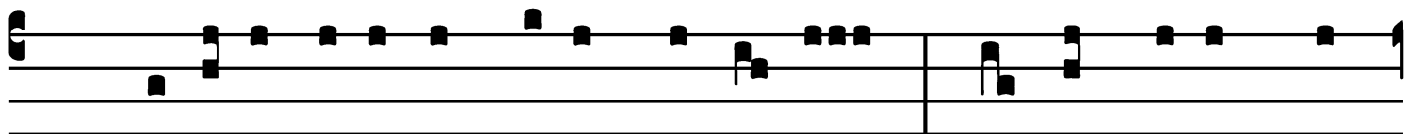
Ene-dí-ci-te Dómi-num \* ómnes Ange- li é-



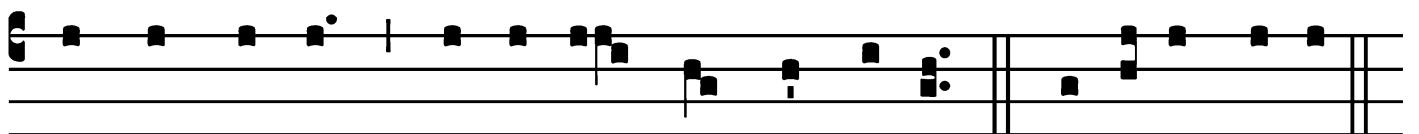
jus : pot-éntes virtú-te, qui fá-ci-tis vérbum é-



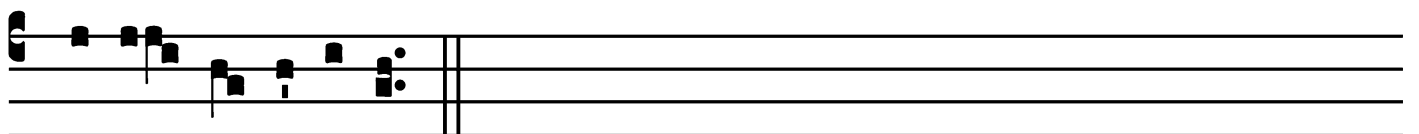
jus, ad audi- éndam vó-cem sermó- num é- jus.



*Ps.* Bénedic ánima mé-a Dómi-no : \* et ómni-a quæ



intra me sunt, nómi-ni sáncto é-jus. Gló-ri-a Pátri.



E u o u a e.

# Gradual

(Page 1 of 2)

Grad.

3.

**B**

Ene- dí- ci-te \* Dó- mi- num

ómnes Ange- li é- jus :

potén-tes vir-tú- te, qui fá- ci-

tis vérbum é- jus.

∇. Bé-


nedic á-nima mé- a Dó- mi- num,

et ómni- a in-ter-i- ó- ra

mé- a nó-men

# Gradual

(Page 2 of 2)

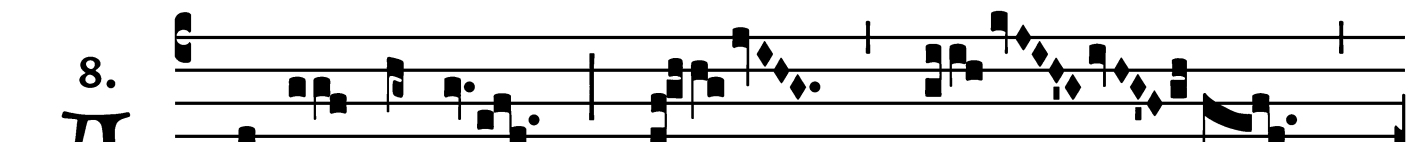


sán- ctum \* é- jus.

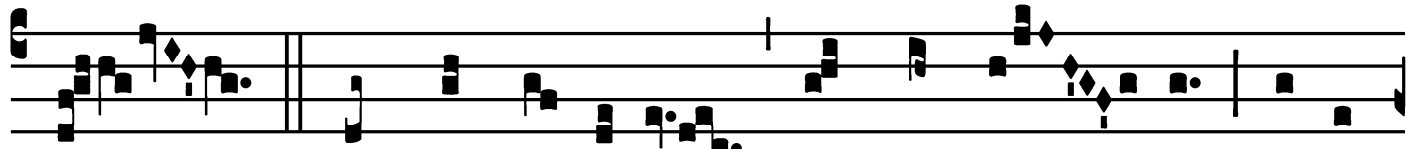


# Alleluia

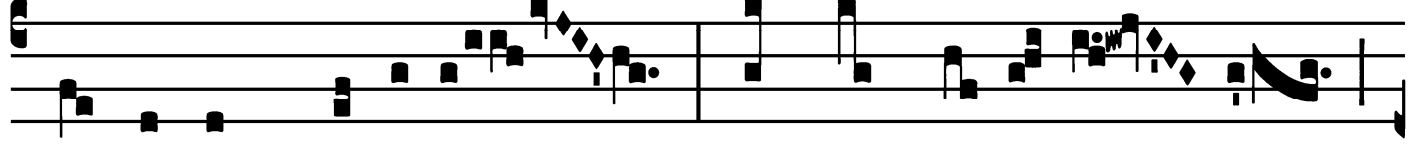
8.  
**A** Lle- lú- ia. \* *ij.*



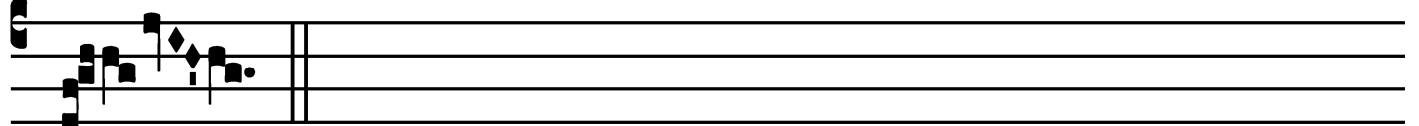

∇. Sáncte Mícha-ël Archánge- le, de-fén-



de nos in próe-li- o : ut non per-e- á- mus



in tre-méndo \* judí-ci- o.



Dedication of the Church of St. Michael the Archangel - Sept. 29

*Offertory*

Offert. 1.

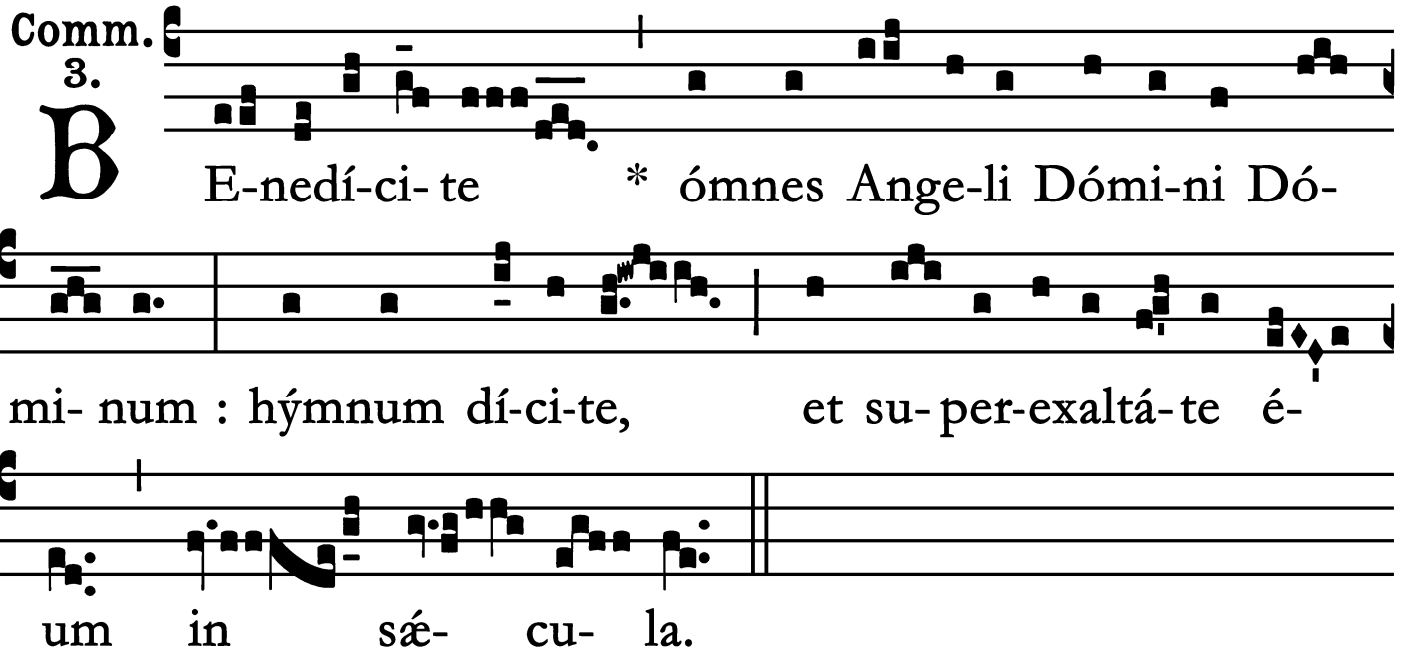


**S** Té-tit \* Ange-lus juxta á-  
ram tém- pli, há-bens thu-ríbu-lum áu-  
re-um in mánu sú-a : et dá-ta sunt é-i  
incénsa múl-ta : et ascén-  
dit fú-mus a-ró-ma-tum in conspéctu Dé-i,  
alle-lú-ia.

Dedication of the Church of St. Michael the Archangel - Sept. 29

*Communion*

Comm. 3.  
**B**



E-nedí-ci-te \* ómnes Ange-li Dómi-ni Dó-  
mi-num : hýmnum dí-ci-te, et su-per-exaltá-te é-  
um in sá-cu-la.

