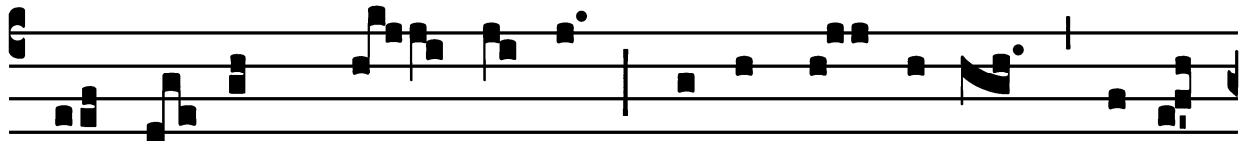


## Introit

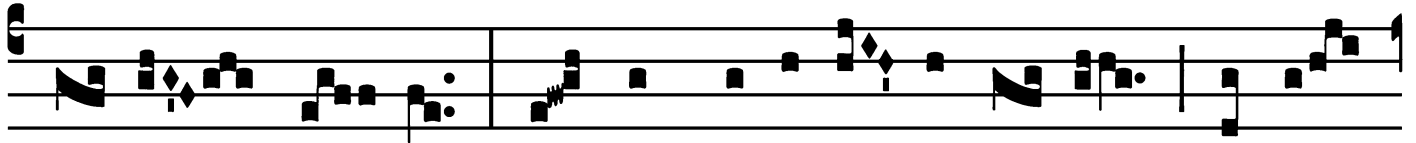
Intr.

3.

**C**



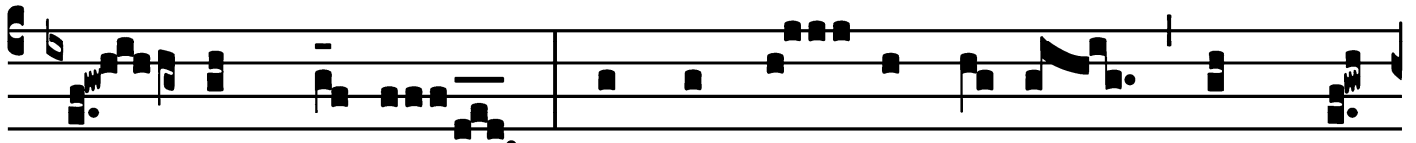
Ognó- vi \* Dó- mi- ne, qui- a æ- qui- tas judí-



ci- a tú- a, et in ve- ri- tá- te tú- a humi-



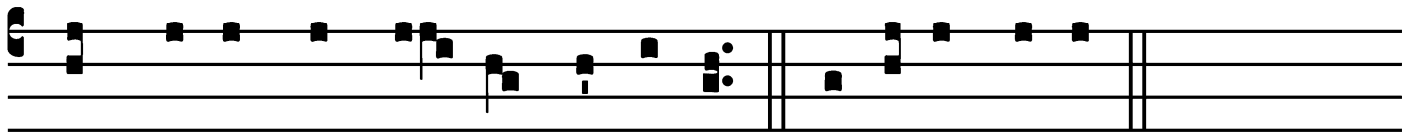
li- á- sti me : confí- ge timó- re tú- o



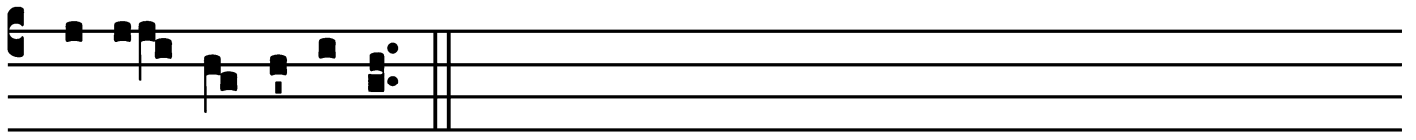
cár- nes mé- as, a mandá- tis tú- is non me



repél- las. *Ps.* Be- á- ti immacu- lá- ti in ví- a : \* qui



ámbu- lant in lé- ge Dómi- ni. Gló- ri- a Pátri.



E u o u a e.

# Gradual

Grad.

5.

**D**

Iffú-sa est \*grá-ti-a in lá-bi-is

tú-is : pro-ptér-e-a bene-

dí-xit te Dé-us in æ-tér-num.

∇. Propter ve-ri-tá-tem, et

mansu-e-túdinem, et ju-

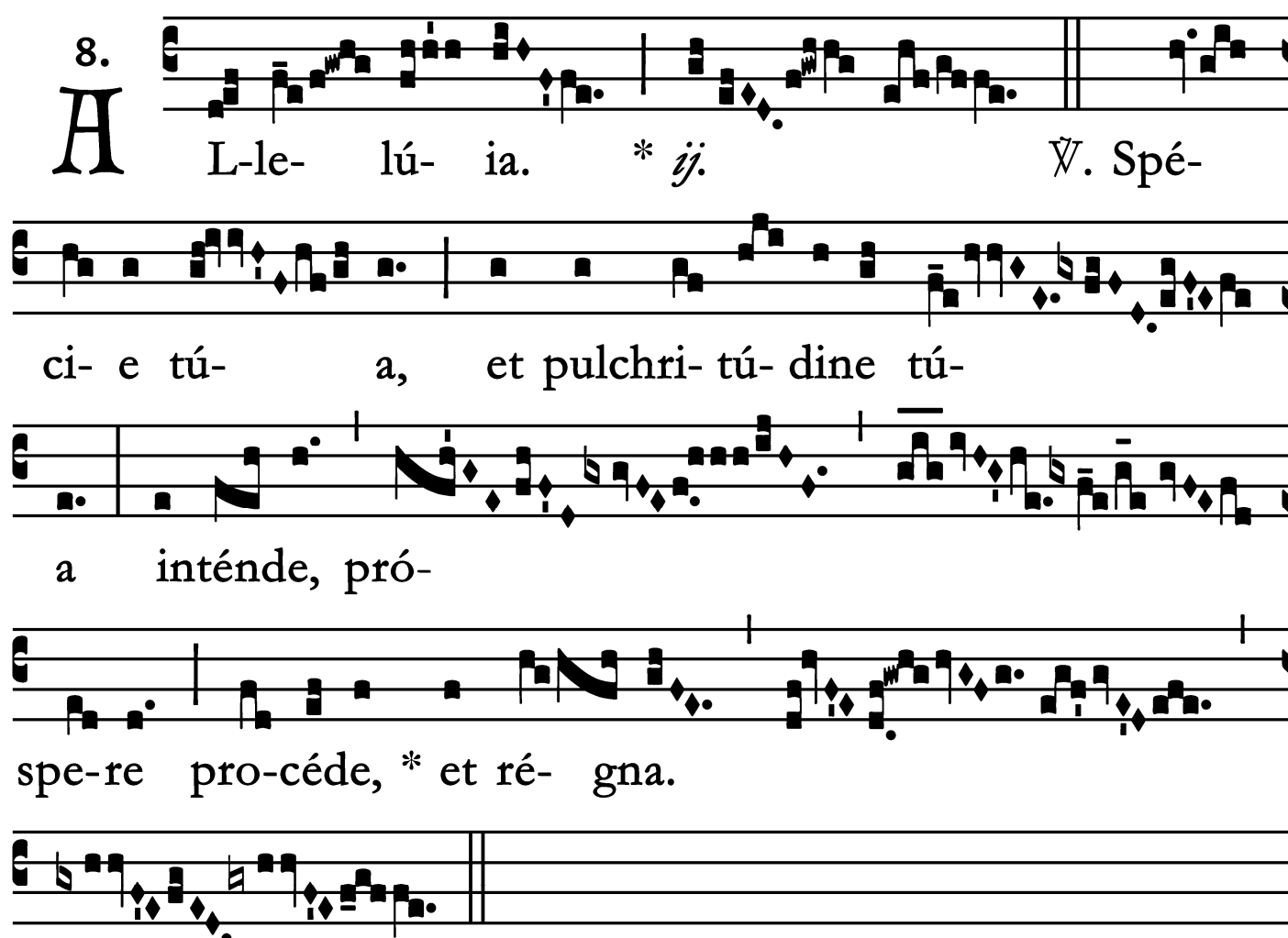
stí-ti-am : et dedúcet te mi-ra-

bí-li-ter \*dék-te-ra tú-a.

St. Hedwig, Widow - October 16

# Alleluia

8.  
**A**



L-le- lú- ia. \* *ij.* ∇. Spé-  
ci- e tú- a, et pulchri- tú- dine tú-  
a inténde, pró-  
spe-re pro-céde, \* et ré- gna.

St. Hedwig, Widow - October 16

# Offertory

Offert.

8.

**D**

Iffú- sa est \* grá- ti- a in

lá- bi- is tú- is : proptér- e- a

be- nedí- xit te Dé- us in æ- tér-

num, et in sá- cu- lum sá-

cu-li.

St. Hedwig, Widow - October 16

## Communion

Comm.

4.

**D**

I-lexí- sti \* justí- ti- am, et odí-

sti in-iqui-tá- tem : proptér- e- a ún-

xit te Dé- us, Dé- us tú- us.

