
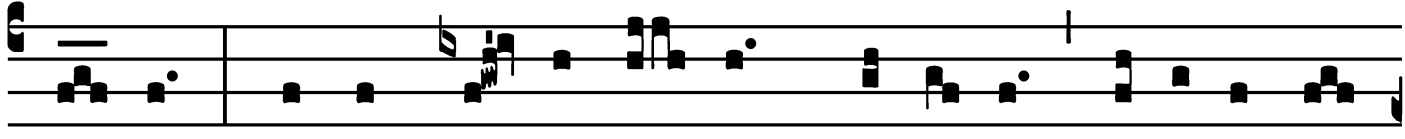


Introit

Intr. 6.




N mé- di- o * Ecclé- si- æ apé- ru- it os




é- jus : et implé- vit é- um Dómi- nus spí- ri- tu sa-



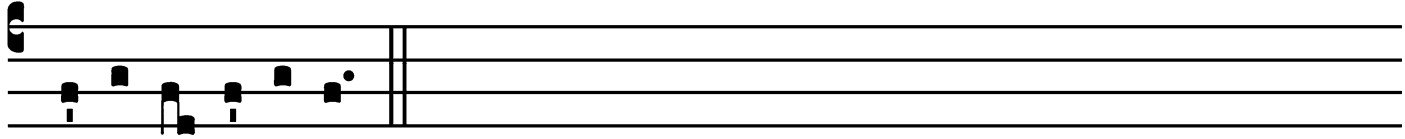
pi- énti- æ, et intel- léctus : stó- lam gló- ri- æ



índu- it é- um. *Ps.* Bónum est confi- té- ri Dómino : *



et psálle- re nómi- ni tú- o, Altíssime. Gló- ri- a Pátri.



E u o u a e.

Gradual

Grad.

5.

G

C-ce * sacérdos má- gnus, qui in di-é-

bus sú- is plá- cu- it Dé- o.

∇. Non est invéntus sími- lis íl-li,

qui conservá-

ret * légem Excél- si.

Alleluia

1.
A Lle- lú-ia. * *ij.*

∩. Be- á- tus vir, qui sú- fert ten- ta- ti-
ó- nem : quó-ni- am cum probá-tus fú- e- rit, accí-
pi- et co-ró- nam * ví- tæ.

Tract

(After Septuagesima)

Tract.

8.

B

E-á- tus vir, * qui tímet Dó- minum :

in man-dá- tis é- jus cú- pit

ni- mis. \forall . Pót- ens in térra é-rit sémen

é- jus : ge- ne- rá- ti- o re- ctó- rum

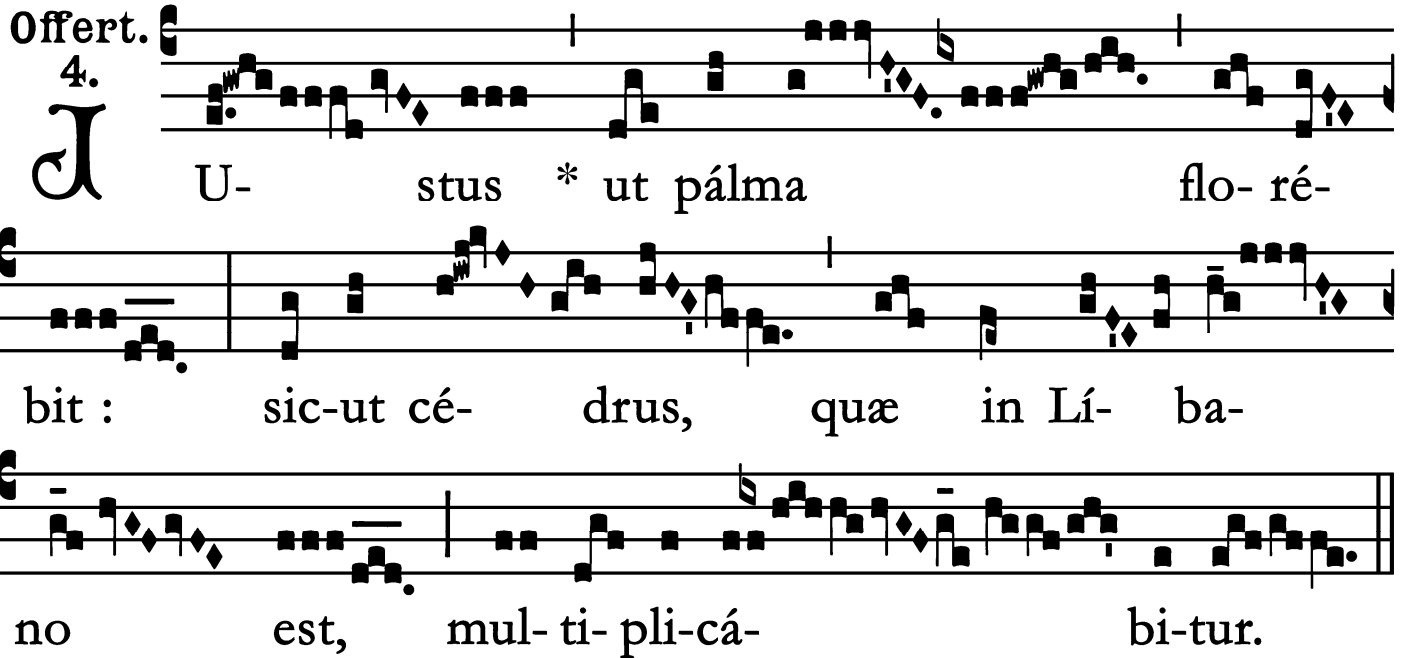
be- ne- di- cé- tur. \forall . Gló- ri- a et di-

ví- ti- æ in dómo é- jus : et ju- stí- ti- a

é- jus má- net * in sá- cu- lum sá- cu- li.

Offertory

Offert. 4.



U- stus * ut pálma flo- ré-
bit : sic-ut cé- drus, quæ in Lí- ba-
no est, mul- ti- pli- cá- bi-tur.

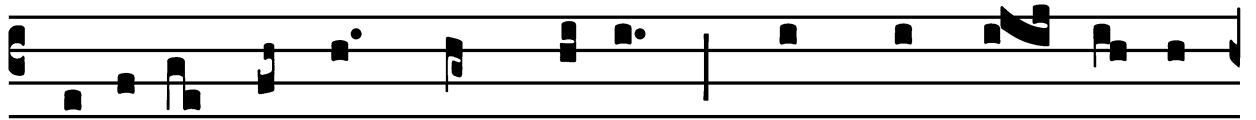
St. John Chrysostom, Bishop, Confessor and Doctor – Jan. 27

Communion

Comm.

7.

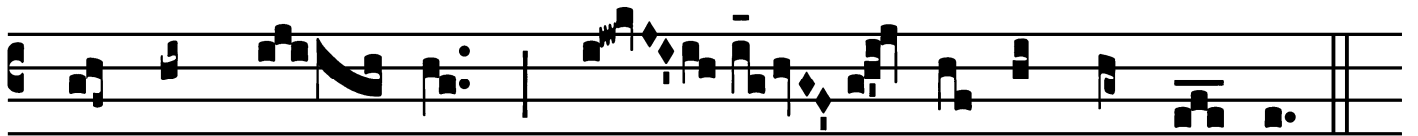
F



Idé-lis sérvus * et prúdens, quem constí- tu- it



Dóminus super famí-li- am sú- am : ut det íl- lis



in témpo- re trí- ti- ci mensú- ram.

