

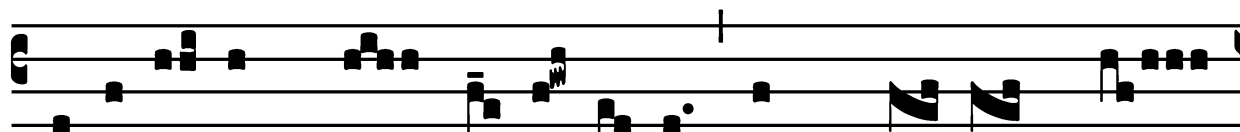
Immaculate Heart of Mary - August 22

Introit

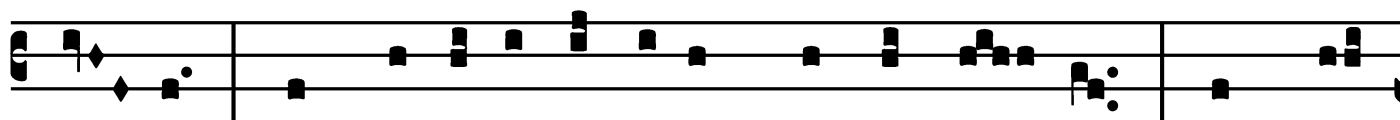
Intr.

5.

A



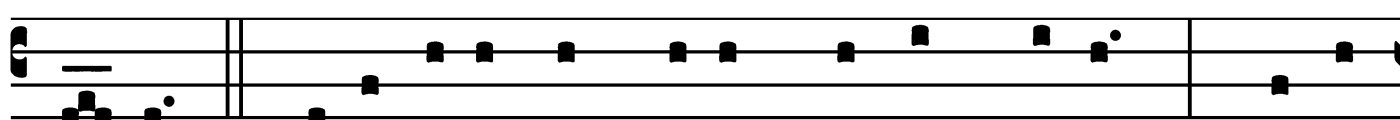
D-e-ámus * cum fi-dú-ci- a ad thró-num grá-



ti- æ, ut mi-se-ri-córdi-am consequá- mur, et grá-



ti-am inveni- á- mus in au-xí- li- o op- por-



tú-no. *Ps.* Eructávit cor mé-um vérbum bónum : * dí-co



égo ópe-ra mé-a ré-gi. Gló-ri- a Pátri. E u o u a e.

Immaculate Heart of Mary - August 22

Gradual

Grad.

2.

G

Xsultá-bit * cor mé-um in sa-lu-tá-ri

tú- o : cantábo Dó- mino, qui bóna trí-

bu- it mí- hi : et psál-

lam nómi-ni Dómi-ni altís-simi.

∇. Mémoires éru-nt nómi-nis tú-

i in ó- mni genera-

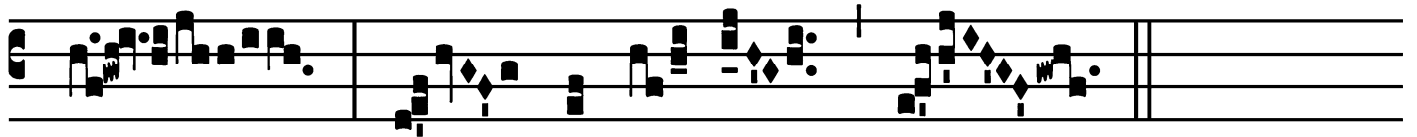
ti- óne et gene-ra-ti- ó- nem :

pro-ptér- e- a pó- pu-li confi-te-bún-tur tí-

Immaculate Heart of Mary - August 22

Gradual

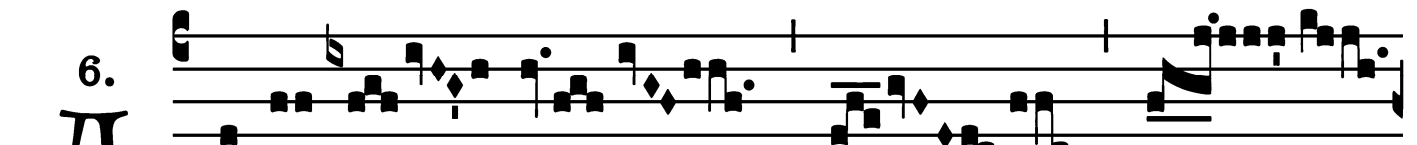
(Page 2)



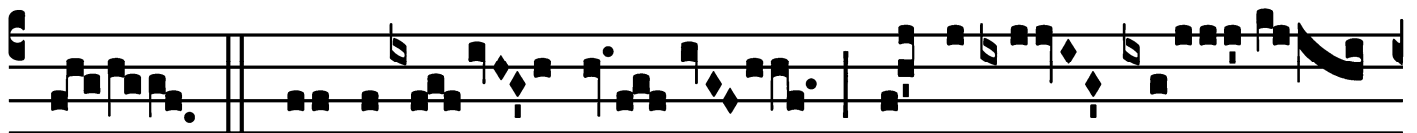
bi * in æ-tér-num.

Alleluia

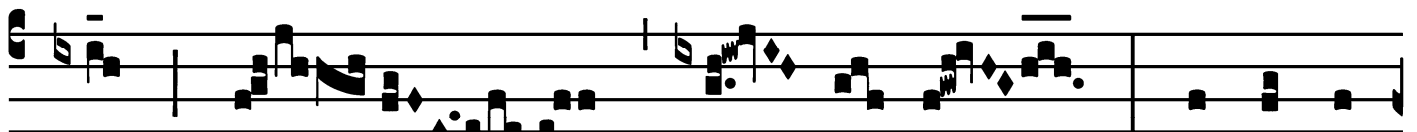
6. **A**



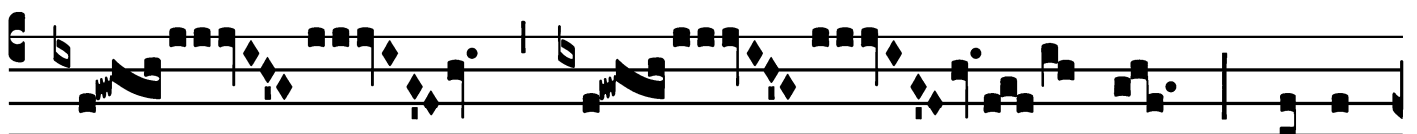
Lle- lú- ia. * *ij.*



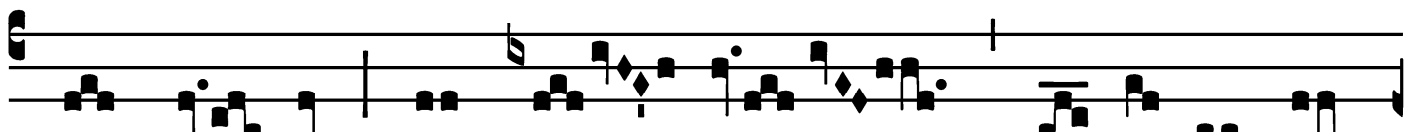
∞. Magní-fi- cat á-nima mé-



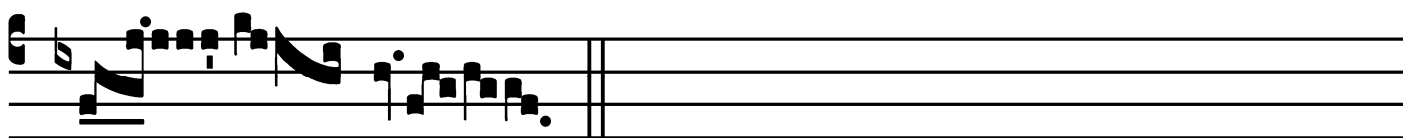
a Dó- mi- num : et exsul-



tá- vit spí-ri-



tus mé- us in Dé- o * sa- lu- tá- ri

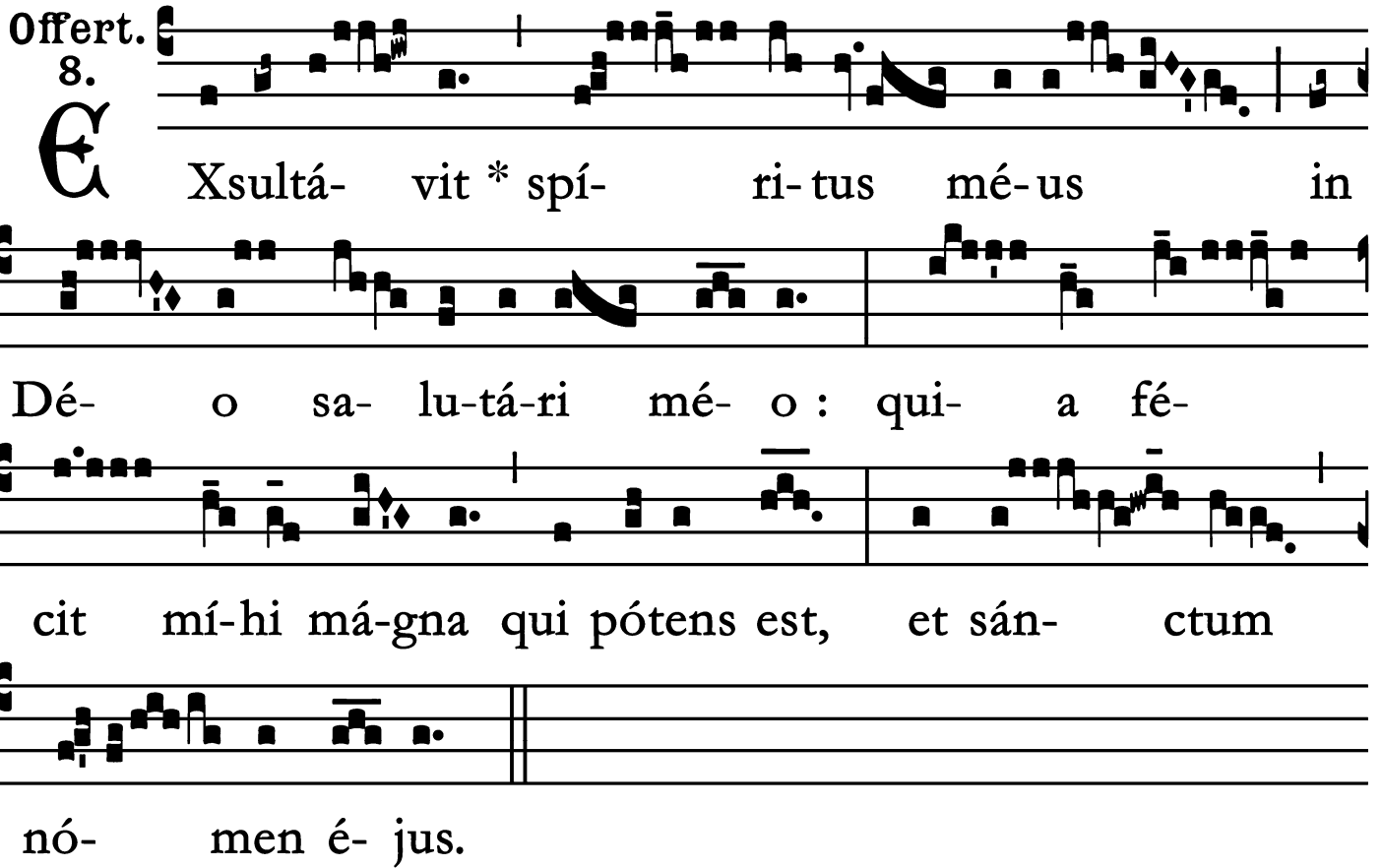


mé- o.

Immaculate Heart of Mary - August 22

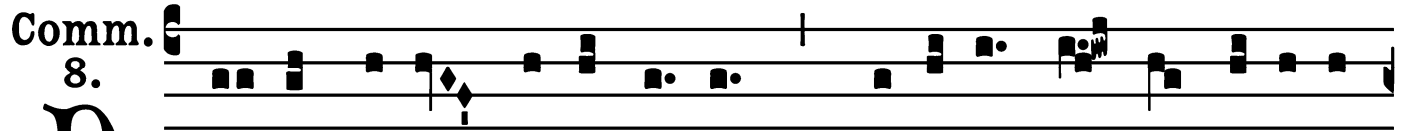
Offertory

Offert.
8.



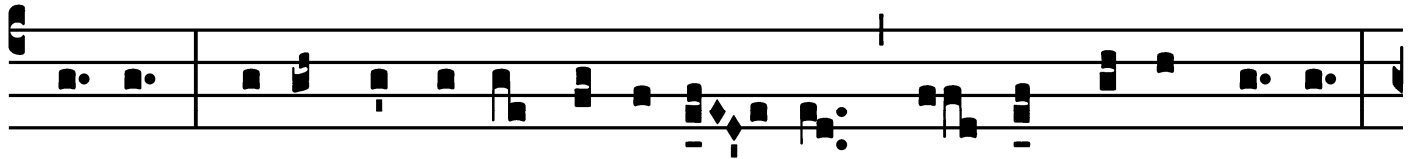
E Xsultá- vit * spí- ri- tus mé- us in
Dé- o sa- lu- tá- ri mé- o : qui- a fé-
cit mí- hi má- gna qui pótens est, et sán- ctum
nó- men é- jus.

Communion

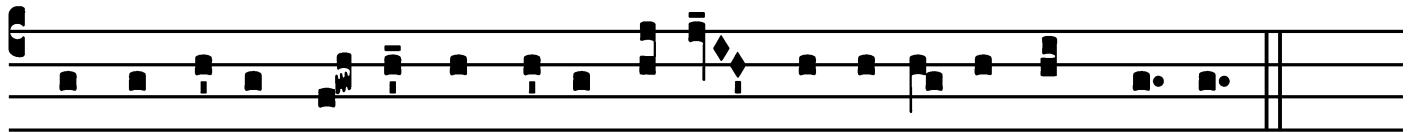


D

I- xit Jésus mátri sú- æ : * Mú-li- er, ec-ce fí-li- us



tú- us; de- ín-de dí-xit discípu- lo : Ec-ce má-ter tú- a.



Et ex ílla hó-ra accépit é-am discípu-lus in sú- a.

