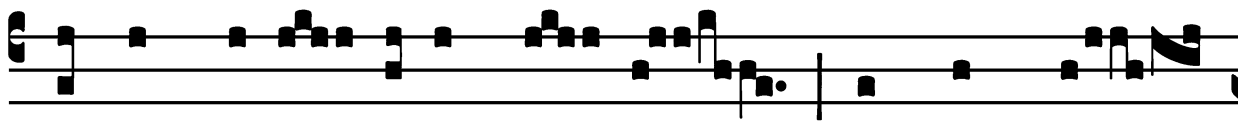


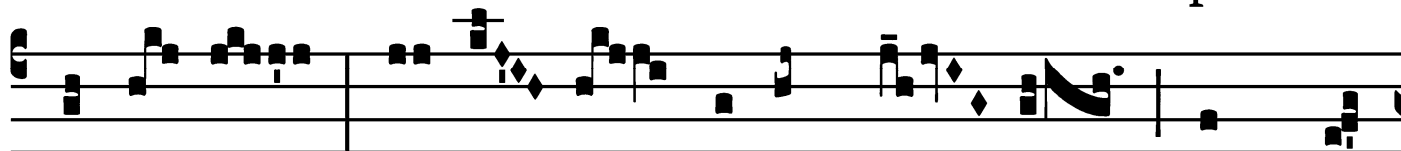
Introit

Intr.
3.

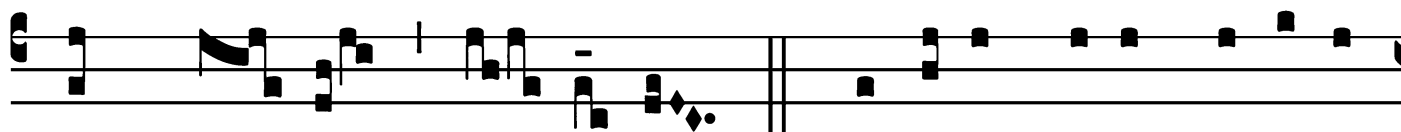


I

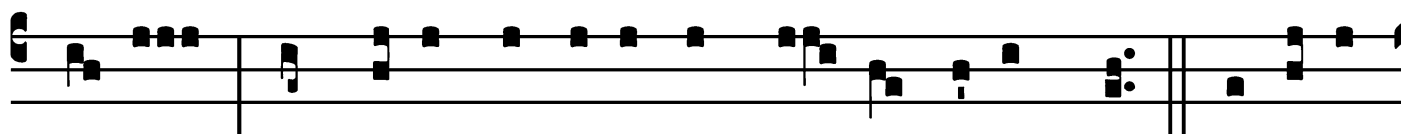
Ntret * orá- ti- o mé- a in conspé-



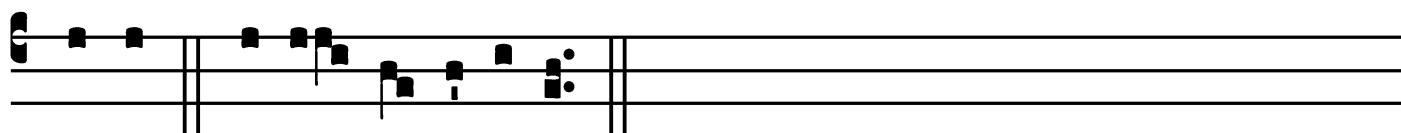
ctu tú- o : inclí- na áurem tú- am ad pré-



cem mé- am Dó- mi- ne. *Ps.* Dómine Dé- us sa- lú- tis



mé- æ : * in dí- e clamávi, et nó- cte coram te. Gló- ri- a



Pátri. E u o u a e.

1. Gradual

1. Grad.

5.

P

Ropí- ti- us é- sto * Dó- mi- ne pec-

cá- tis nó- stris : nequándo dí- cant gén- tes :

U- bi est Dé- us e- ó- rum?

∞. Adjuva nos, Dé- us sa- lu- tá- ris nóster :

et propter honó-

rem nómi- nis tú- i Dómine, * lí- be- ra nos.

Saturday of Ember Week in Lent / Sabato

2. Gradual

2. Grad.

5.

P

Ro-té-ctor nó-ster * á-spi-ce

Dé-us, et ré-spi-ce super sér-vos

tú-os. *Ÿ.* Dómine Dé-us virtú-

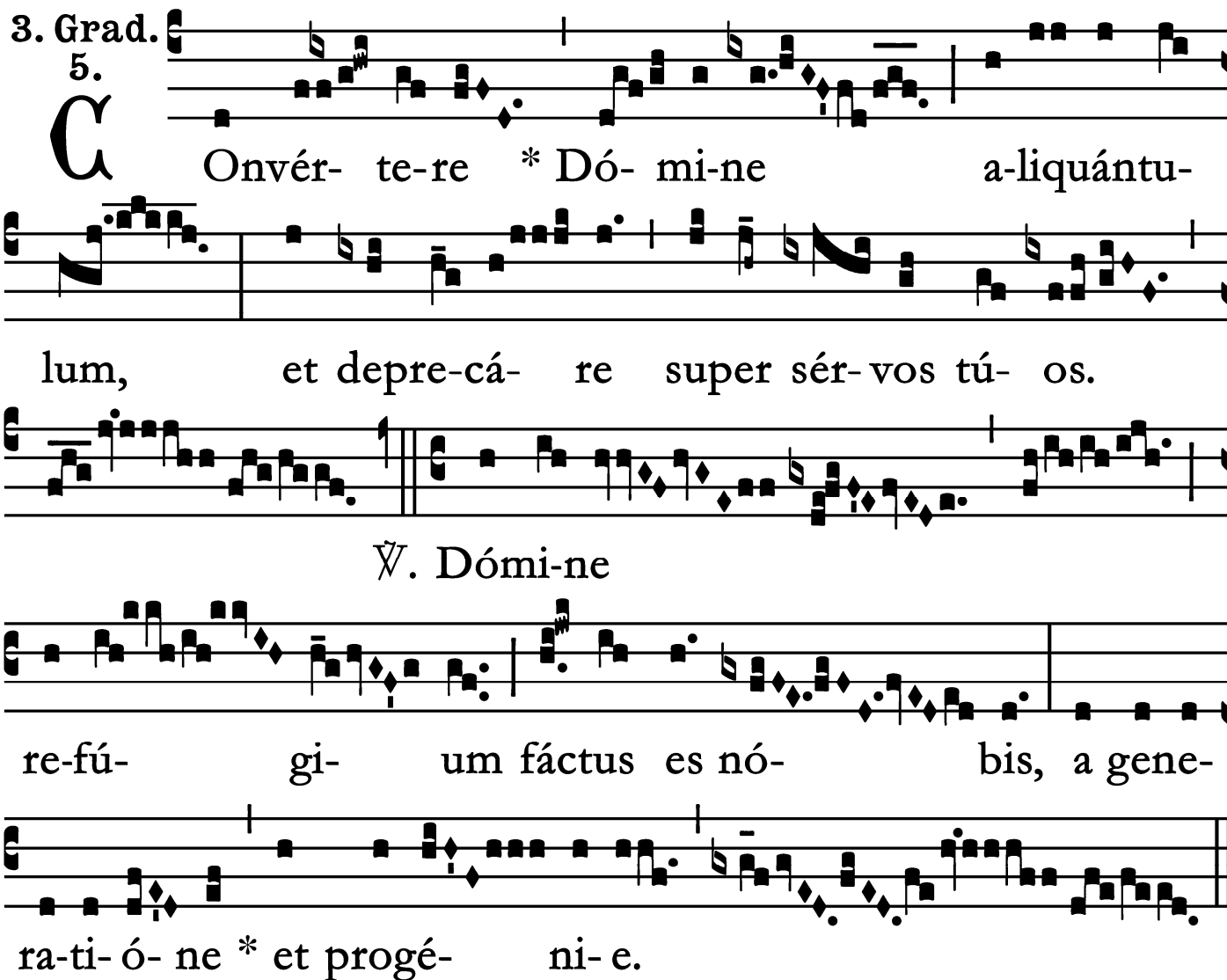
tum, ex-

áu-di pré-ces servó-rum * tu-ó-

rum.

3. Gradual

3. Grad. 5.



Onvér- te-re * Dó- mi-ne a-liquántu-
lum, et depre-cá- re super sér- vos tú- os.
Ÿ. Dómi-ne
re-fú- gi- um fáctus es nó- bis, a gene-
ra-ti- ó- ne * et progé- ni- e.

4. Gradual

4. Grad.

7.

D

I-rigá-tur * o-rá-ti-o mé-a sicut in-

cénsum in conspéctu tú-o, Dó-mine.

Ÿ. E-levá-ti-o mánu-um

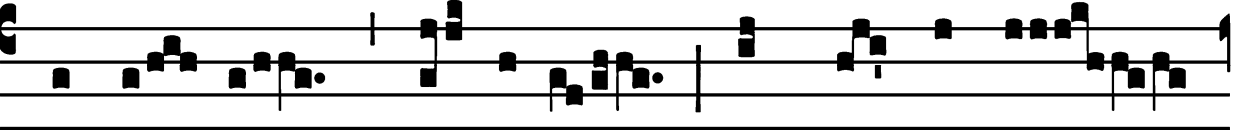
me-á-rum sacri-fí-cium * vesper-tí-

num.

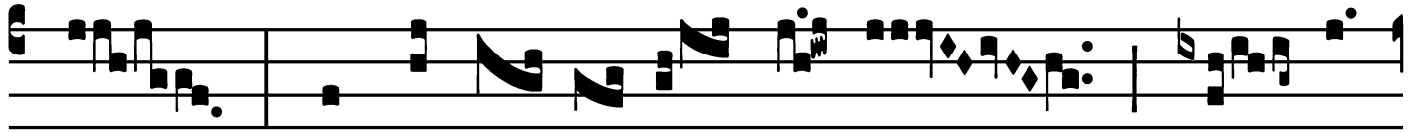
Saturday of Ember Week in Lent / Sabato

Tract

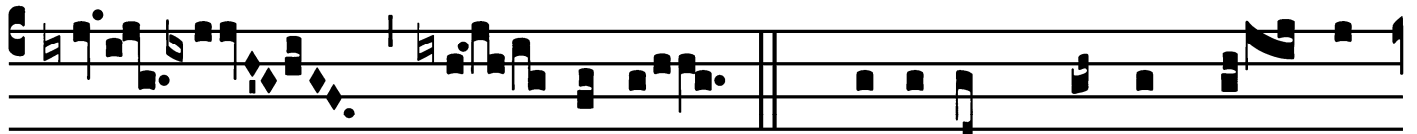
Tract.
8.




L Audá- te * Dó-minum, ómnes géntes :



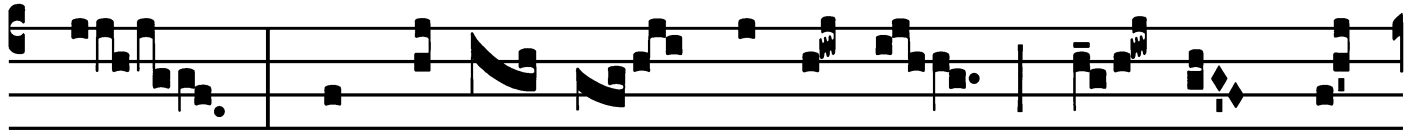
et collau- dá- te é- um, ó-mnes



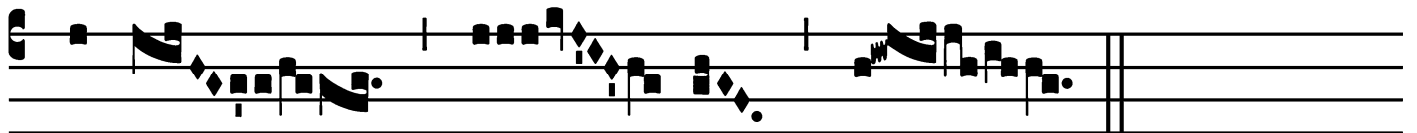
pó- pu-li. \forall . Quóni- am confirmá- ta



est su- per nos mi-se- ricór-di- a é- jus :



et vé-ri- tas Dómi- ni má- net * in



æ-tér- num.

Saturday of Ember Week in Lent / Sabato

Offertory

Offert.

8.

D

Omi-ne * Dé- us sa-lú- tis mé- æ, in dí-

e clamá- vi, et nó-cte co-ram te : íntret o-rá-

ti- o mé- a in conspéctu tú- o, Dómi- ne.

Saturday of Ember Week in Lent / Sabbato

Communion

Comm.

2.

D

Omi- ne * Dé- us mé- us in te spe- rávi :

líbe- ra me ab ómni- bus persequéntibus me, et

é- ri- pe me.

