

Introit

Intr.

1.

L

EX DÓ-mi-ni * ir-re-pre-hen-sí-bi-lis, con-vér-tens

á-ni-mas : testi-mó-ni-um Dé-i fi-dé-le, sapi-

énti-am præ-stans pár-vu-lis. *Ps.* Cée-li enárrant gló-ri-

am Dé-i : * et ó-pe-ra mánu-um é-jus annúnti-at fir-

maméntum. Gló-ri-a Patri. E u o u a e.

Saturday in the Second Week of Lent / Sabato

Gradual

Grad.

5.

B

O-num est

* confi-té-

ri Dó-mi-

no :

et psál-le-re

nó- mini tú-

o,

Al-tís- sime.

∞. Ad an-

nunti- án- dum mane

mi- se-ri-cór-

di- am

tú-

am,

et ve-ri-tá-tem tú-

am

* per

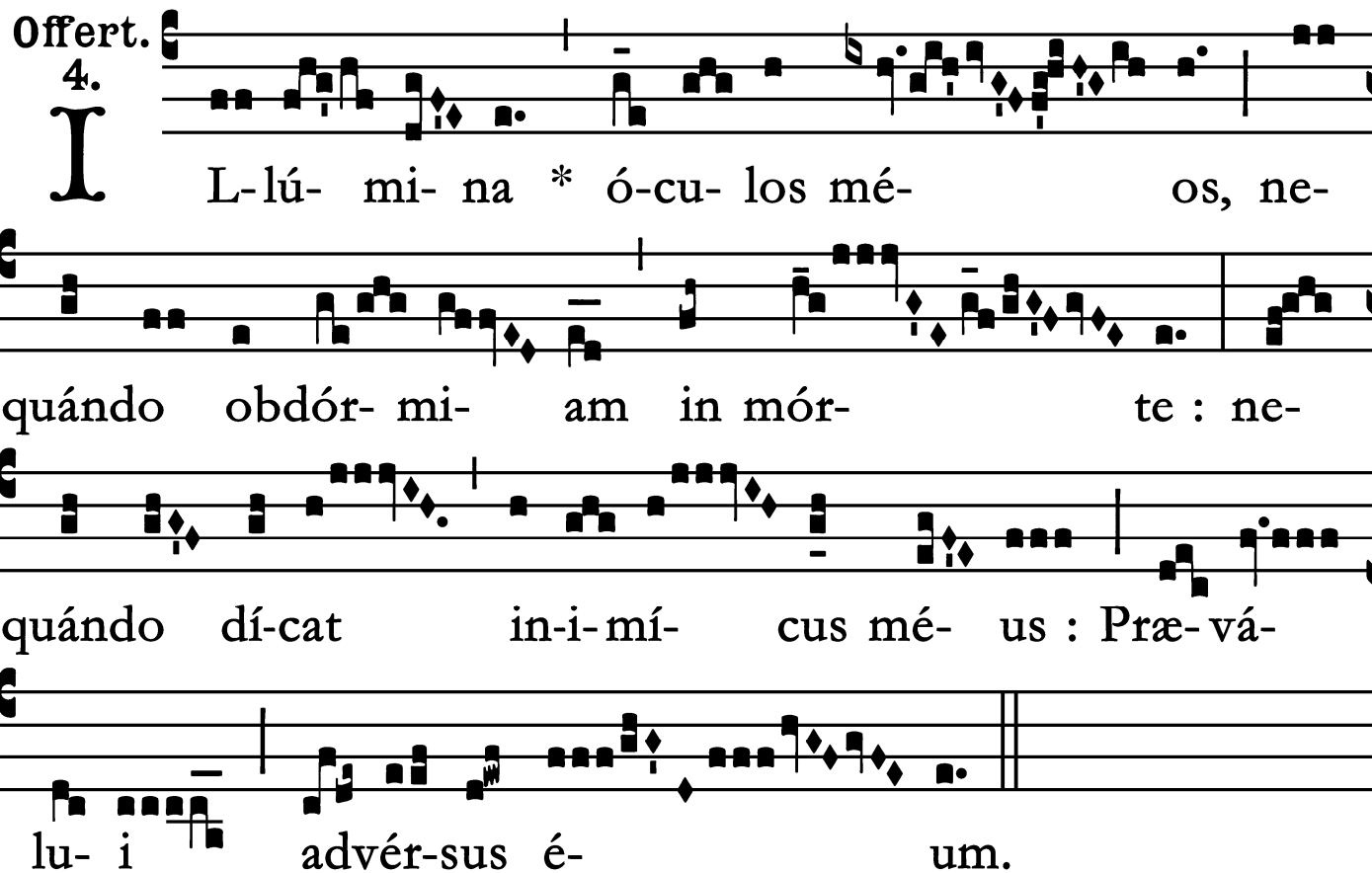
nó-

ctem.

Saturday in the Second Week of Lent / Sabbato

Offertory

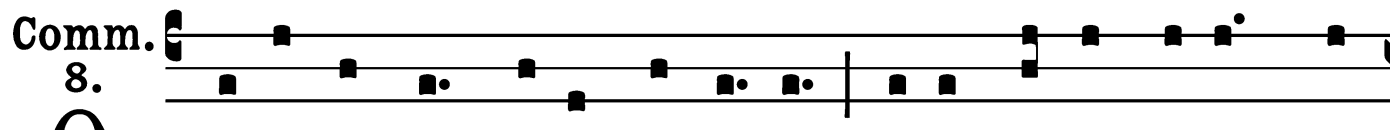
Offert. 4.



L-lú- mi- na * ó-cu- los mé- os, ne-
quándo obdór- mi- am in mór- te : ne-
quándo dí-cat in-i-mí- cus mé- us : Præ- vá-
lu- i advér-sus é- um.

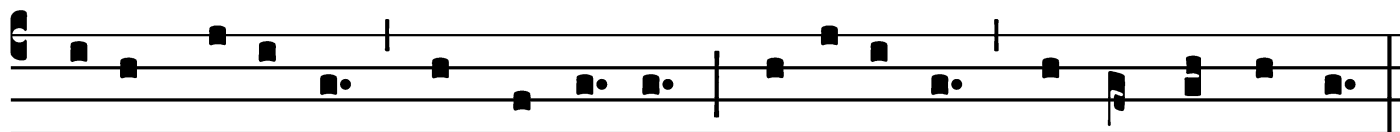
Saturday in the Second Week of Lent / Sabato

Communion



O

-pórtet te * fí-li gaudé-re, qui- a frá-ter tú-us mór-



tu-us fú-e-rat, et re-ví-xit; per-í-e-rat, et invéntus est.

