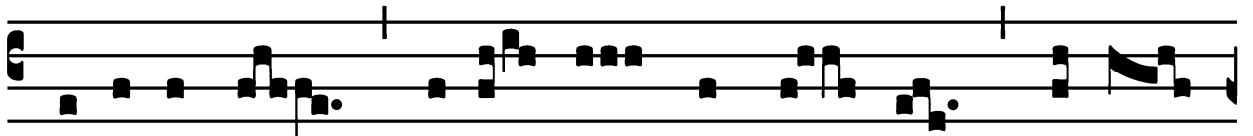


Introit

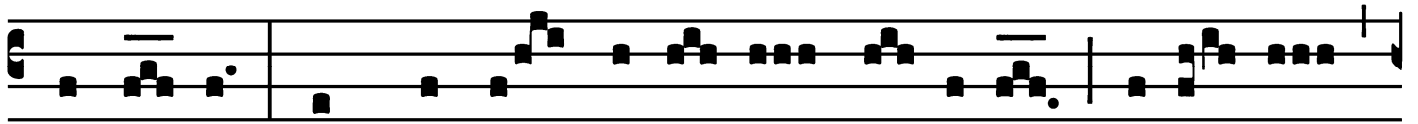
Intr.

2.

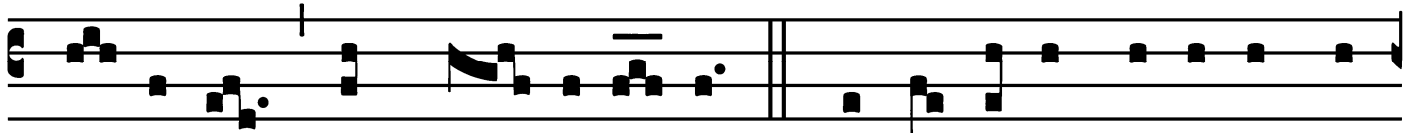
S



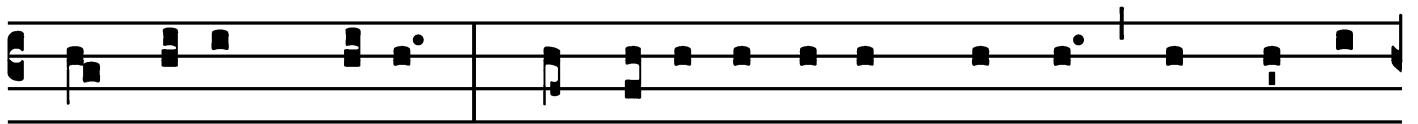
I-ti- éntes, * vení- te ad á- quas, dí- cit



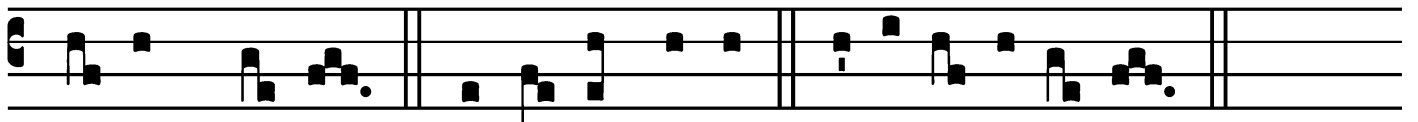
Dómi- nus : et qui non habé- tis pré- ti- um, vení- te,



bí- bi- te cum læ- tí- ti- a. *Ps.* Atté- di- te, pópu- le me-



us, lé- gem mé- am : * incliná- te áurem vé- stram in vérba



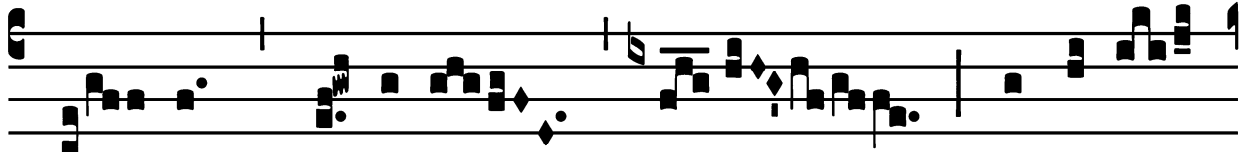
ó- ris mé- i. Gló- ri- a Pátri. E u o u a e.

Gradual

Grad.

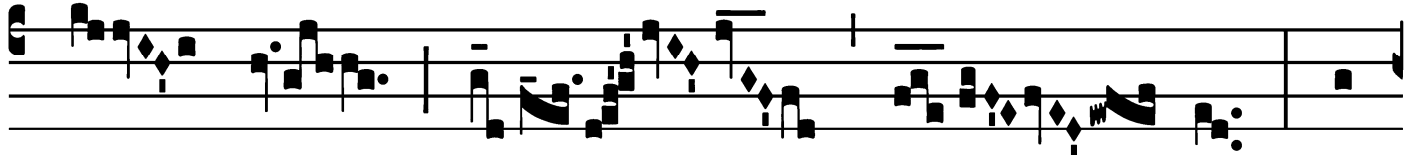
3.

T



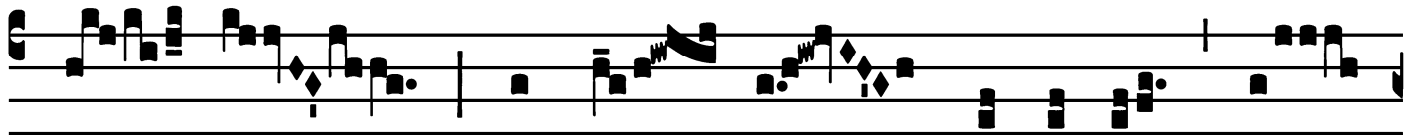
I- bi * Dómine

de-re-lí-



ctus est páu-

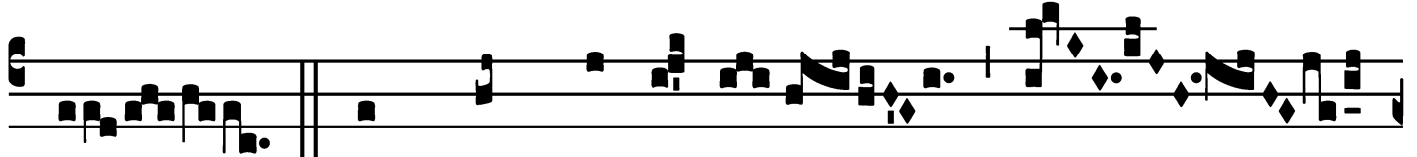
per : pu-



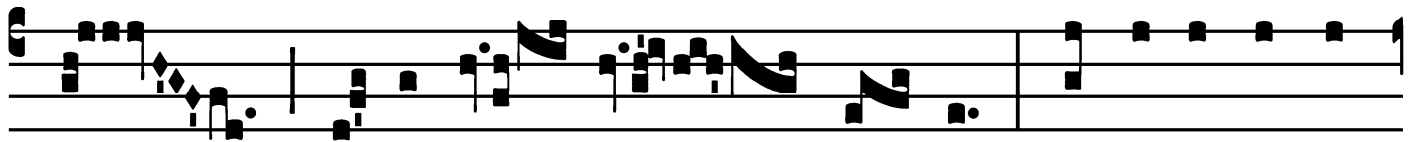
píl- lo

tu é- ris

adjú-tor.

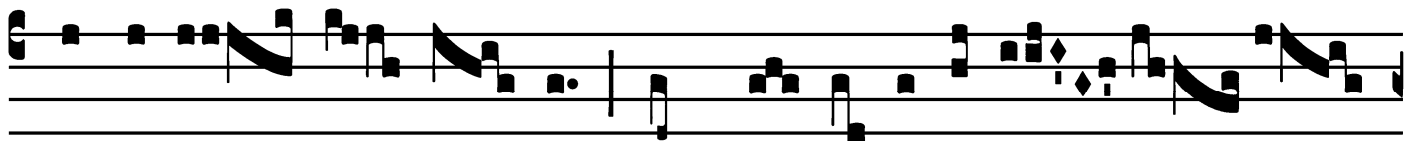


∇. Ut quid Dómi-ne

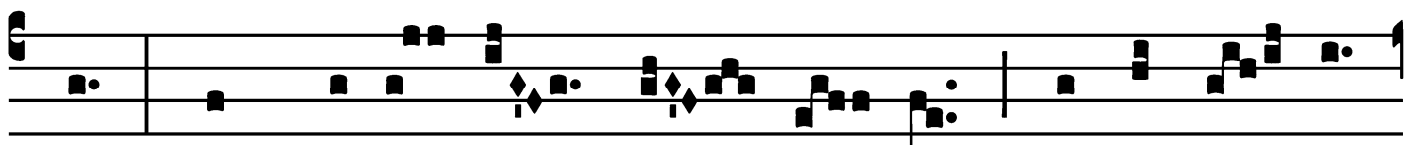


re-cessí- sti

lon-ge, déspi-cis in op-



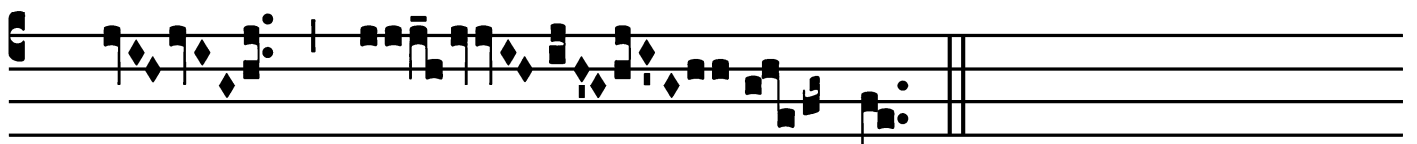
portuni- tá- ti- bus, in tri- bu- la- ti- ó-



ne? dum supér- bit

ím- pi- us,

incé-ndi- tur



* páu-

per.

Offertory

Offert. 4.

F A- ctus est * DÓ- mi- nus fir- ma-
mén- tum mé- um, et re- fú- gi- um mé-
um, et li- be- rá- tor mé- us : spe- rá-
bo in é- um.

Communion

Comm.

2.

D

Ominus * ré- git me, et ni-hil mí-hi dé-

e- rit : in ló-co pá-scu- æ i- bi me col-

locávit : su-per áquam re-fe-cti-ónis e-ducá-

vit me.

