

Votive Mass of the Blessed Sacrament

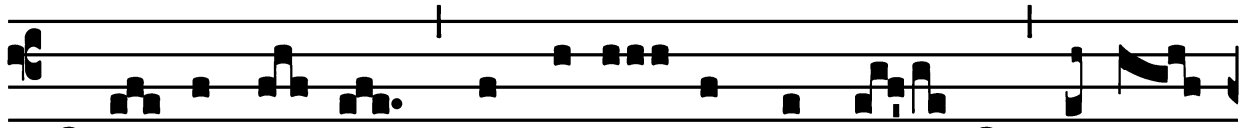
Introit

(In Paschal Time)

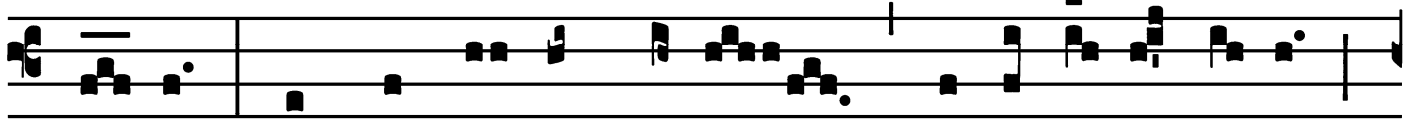
Intr.

2.

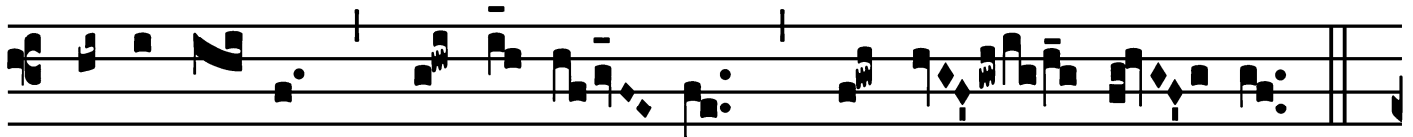
C



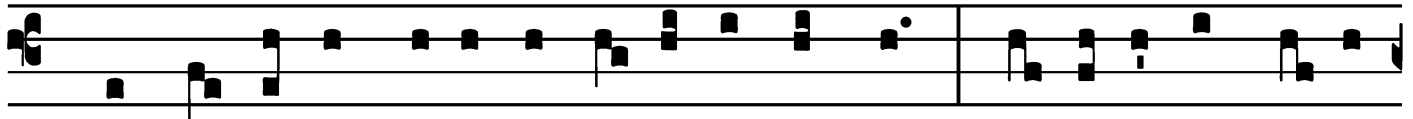
Ibá- vit é- os * ex ádi- pe frumén- ti, alle-



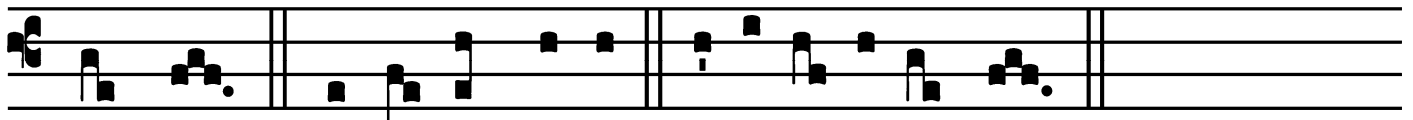
lú- ia : et de pé- tra, melle sa- tu- rá- vit é- os,



alle- lú- ia, al- le- lú- ia, al- le- lú- ia.



Ps. Exsul- tá- te Dé- o adju- tó- ri nóstro : * ju- bi- lá- te Dé- o



Já- cob. Gló- ri- a Pátri. E u o u a e.

Votive Mass of the Blessed Sacrament

Alleluia

(In Paschal Time)

3.
A Lle- lú- ia. * *ij.*

∩. Cognovérunt di- scí- pu- li

Dó- mi- num Jé- sum in fra- cti- ó- ne * pá- nis.

Votive Mass of the Blessed Sacrament

Second Alleluia

(In Paschal Time)

7.
A Lle- lú- ia. *

∇. Cá-ro mé- a ve-re est cí- bus, et

sán- guis mé- us ve-re est pó- tus : qui

mandú- cat mé- am cárnem, et bí- bit

mé- um sán- gui-nem, in me má- net,

et é-go * in é- o.

Votive Mass of the Blessed Sacrament

Offertory

(In Paschal Time)

Offert.

4.

S

Acerdó-tes * Dó- mi-ni incén-sum et

pá- nes óffe- runt Dé-o : et íde-o sáncti

é- runt Dé-o sú- o, et non pól- lu-

ent nó- men é- jus, al- le- lú-ia.

Votive Mass of the Blessed Sacrament

Communion

(In Paschal Time)

Comm.

7.

Q

Uo-ti-escúmque * mandu-cá- bi-tis pánem hunc,

et cá-li-cem bi-bé-tis, mórtem Dó-mi-ni annunti-ábi-

tis, do-nec vé-ni-at : í-taque qui-cúmque mandu-

cá-ve-rit pánem, vel bí-be-rit cá-li-cem Dómi-ni indí-

gne, ré-us é-rit córpo-ris et sán-gui-nis Dó-mi-ni,

alle- lú- ia.

