

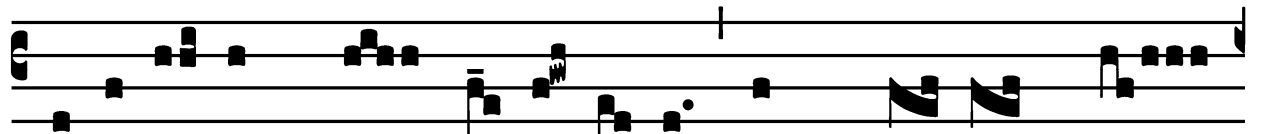
Immaculate Heart of Mary - Votive Mass

Introit

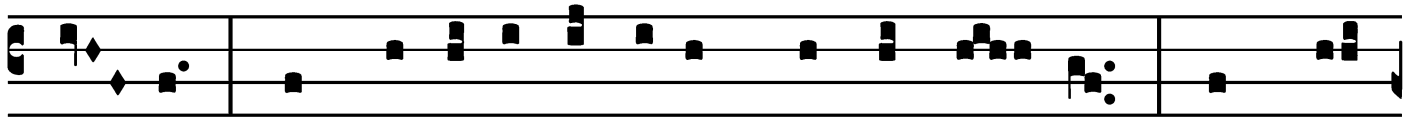
Intr.

5.

A



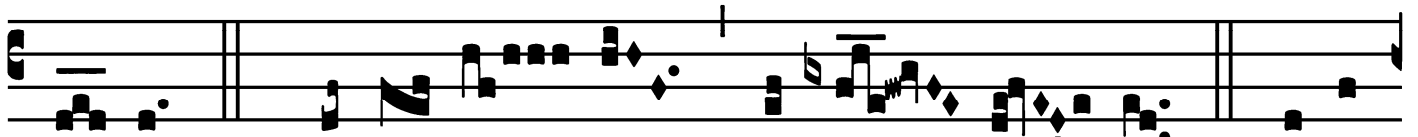
D-e-á-mus * cum fi-dú-ci-a ad thró-num grá-



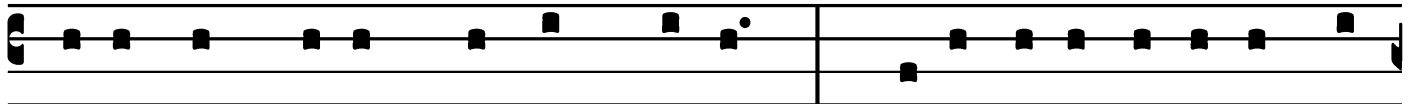
ti-æ, ut mi-se-ri-córdi-am consequá-mur, et grá-



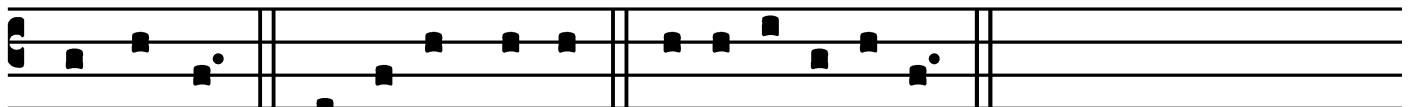
ti-am inveni-á-mus in au-xí-li-o op-por-



tú-no. *T. P.* Alle-lú-ia, al-le-lú-ia. *Ps.* Eru-



ctávit cor mé-um vérbum bónum : * díco égo ópe-ra mé-



a ré-gi. Gló-ri-a Pátri. E u o u a e.

Immaculate Heart of Mary - Votive Mass

Gradual

(Page 1 of 2)

Grad.

2.

E

Xsultá- bit * cor mé- um in sa- lu- tá- ri

tú- o : cantábo Dó- mino, qui bóna trí-

bu- it mí- hi : et psál-

lam nómi- ni Dómi- ni altís- simi.

∇. Mémoires éruⁿt nómi- nis tú-

i in ó- mni genera-

ti- óne et gene- ra- ti- ó- nem :

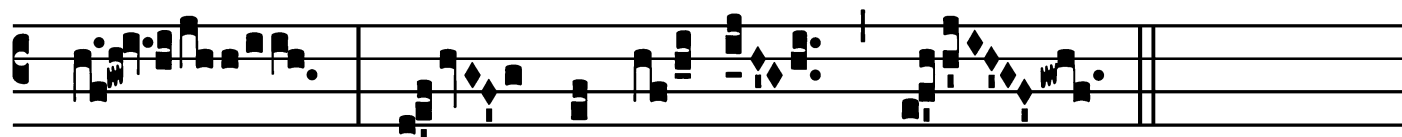
Immaculate Heart of Mary - Votive Mass

Gradual

(Page 2 of 2)



pro-ptér- e- a pó- pu-li confi-te-bún-tur tí-



bi * in æ-tér-num.

Immaculate Heart of Mary - Votive Mass

Alleluia

6.
A Lle- lú- ia. * *ij.*

Ÿ. Magní-fi- cat á-nima mé-

a Dó- mi- num : et exsul-

tá- vit spí-ri-

tus mé- us in Dé- o * sa- lu- tá- ri

mé- o.

Immaculate Heart of Mary - Votive Mass

Second Alleluia

3.
A L-le-lú- ia. *

Ū. Be- á-tam me dí- cent ómnes gene-ra- ti-

ó- nes, qui- a ancíl-lam húmi- lem

respé-

xit * Dé- us.

Immaculate Heart of Mary - Votive Mass

Tract

(Page 1 of 2)

Tract.

8.

Ω

Unc er- go, * fí- li- i, audí- te me :

Be- á- ti, qui custódi- unt ví- as mé- as.

∞. Audí- te disciplínam, et estóte sa- pi- én- tes, et

no- lí- te ab- jí- ce- re é- am. ∞. Be- á- tus hó-

mo qui áu- dit me, et qui ví-

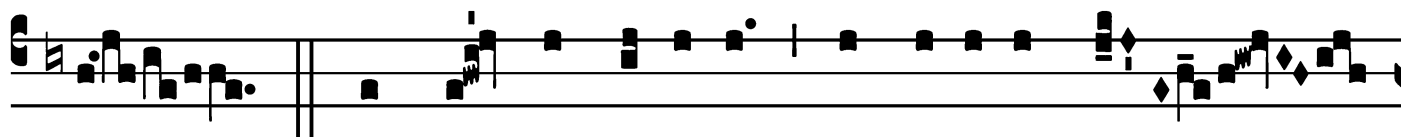
gi- lat ad fóres mé- as quo- tí- di- e, et ob-

sér- vat ad póstes ó- sti- i mé- i.

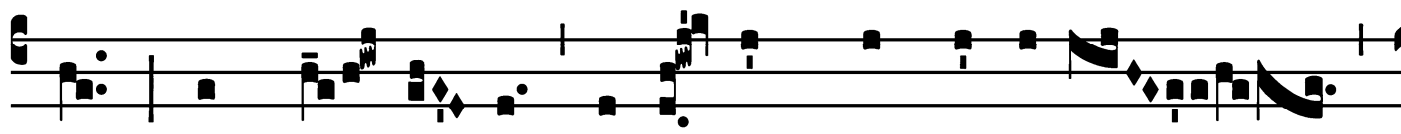
Immaculate Heart of Mary - Votive Mass

Tract

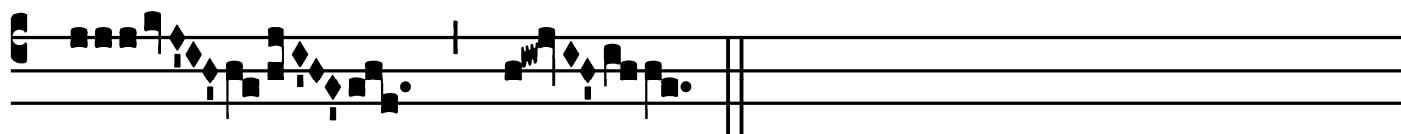
(Page 2 of 2)



Ÿ. Qui me invéne-rit, invéni- et ví-



tam, et háu- ri- et sa-lú- tem * a Dómino.



Immaculate Heart of Mary - Votive Mass

Offertory

Offert.

8.

E

Xsultá- vit * spí- ri- tus mé- us in

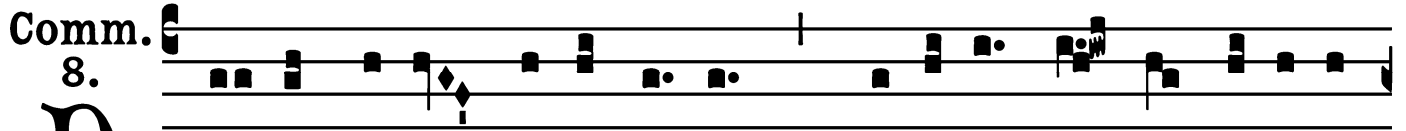
Dé- o sa- lu- tá- ri mé- o : qui- a fé-

cit mí- hi má- gna qui pótens est, et sán- ctum

nó- men é- jus. *T.P.* Alle- lú- ia.

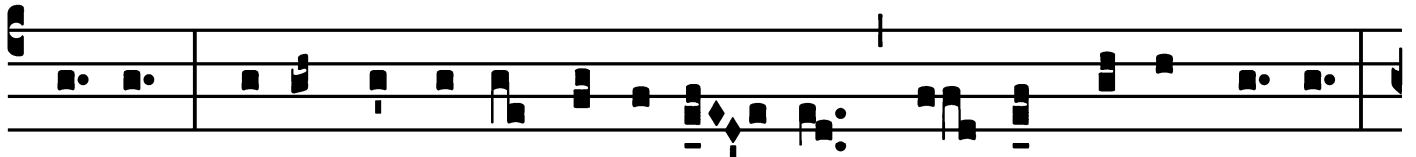
Immaculate Heart of Mary - Votive Mass

Communion

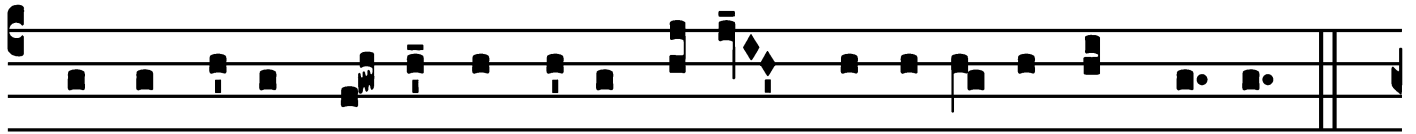


D

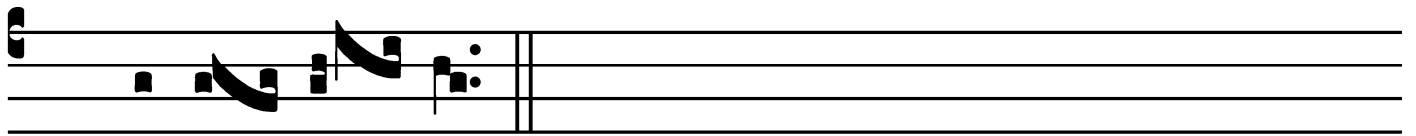
I- xit Jésus mátri sú- æ : * Mú-li- er, ec-ce fí-li- us



tú- us; de- ín-de dí-xit discípu- lo : Ec-ce má-ter tú- a.



Et ex ílla hó-ra accépit é-am discípu-lus in sú- a.



T.P. Alle- lú- ia.

