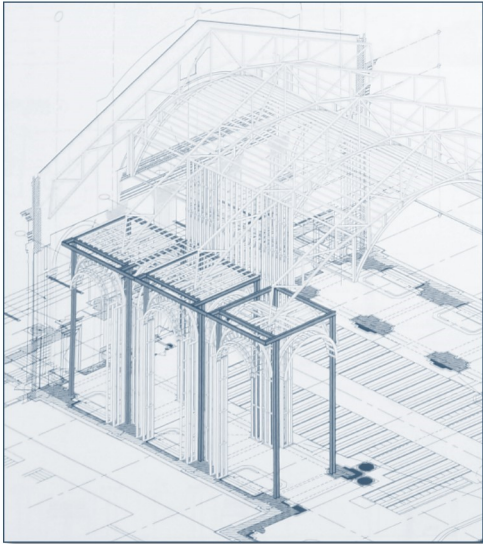


U.S. PROVINCIAL SHRINE CAPITAL CAMPAIGN

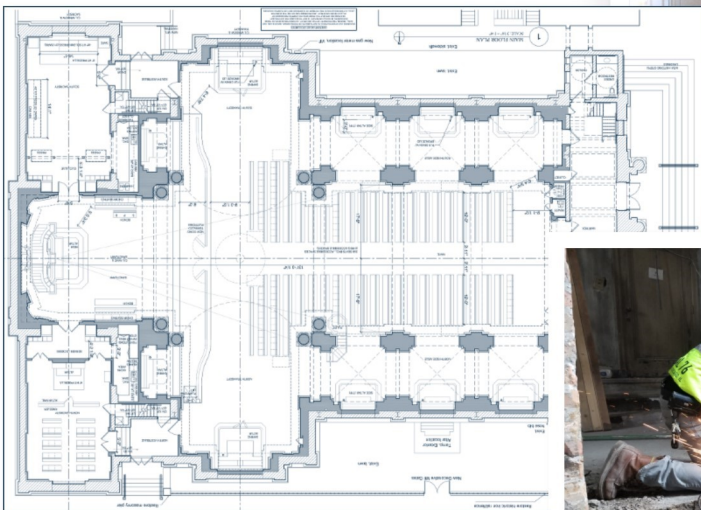
By God's grace and your generosity, we are building a spiritual stronghold for the Institute in the USA. Please consider helping us build the Institute's Provincial Headquarters campus in the United States. Here is the latest work being done this week:

PROVINCIAL SHRINE: *Structural Design*



This week, Canon Weaver met with the project team to go over the structural components of the interior build-out. The interior framing will allow us to transform the Shrine's present shell into the planned Roman basilica design.

Thanks to your generosity, we continued to remove the damaged concrete slab as well as the obsolete electrical work to prepare for the building's new mechanical systems. These will include a radiant floor heat system, providing a contemporary comfort to the Shrine's classical design.



To find out how you can help by donating to the Institute of Christ the King Sovereign Priest, Email our Project Manager, Rev. Canon Matthew Weaver, at info@institute-christ-king.org



**INSTITUTE OF CHRIST THE KING
SOVEREIGN PRIEST**

institute-christ-king.org (773)363-7409