

Common of a Martyr Bishop: Mass I

Introit

Intr.

1.

S

Tá-tu-it * é-i Dó-mi-nus te-staméntum

pá-cis, et príncipem fé-cit é-um : ut sit íl-li sa-

cerdó-ti-i dígni-tas in æ-tér-num. *Ps.* Me-

ménto Dómine Dá-vid : * et ómnis mansu-e-tú-dinis é-

jus. Gló-ri-a Pátri. E u o u a e.

Common of a Martyr Bishop: Mass I

Gradual

(Page 1 of 2)

Grad. 1.

Nvé- ni * Dá- vid sér- vum mé- um, ó-

le- o sán- cto únxi é- um : mánus e-

nim mé- a auxi- li- á- bi- tur é-

i, et brá- chi- um mé- um confortábit é-

um. V. Ni- hil pro- fí- ci- et in- i-

mí- cus in é- o,

et fí- li- us in- iqui- tá-

Common of a Martyr Bishop: Mass I

Gradual

(Page 2 of 2)

tis non nocé-bit *

é- i.

Common of a Martyr Bishop: Mass I

Alleluia

8.
A Lle- lú-ia. * *ij.*

∞. Tu es sacér- dos in æ- tér- num,
se- cúndum ór- di- nem * Melchí- sede- ch.

Common of a Martyr Bishop: Mass I

Tract

(Page 1 of 2)

Tract.

8.

D

Esidé- ri- um * á- nimæ é-

jus tri- bu- í- sti é- i : et vo- luntá- te la-

bi- órum é- jus non fraudásti é-

um. ∇ . Quóni- am præve- ní-

sti é- um in be- nedi- cti- óne

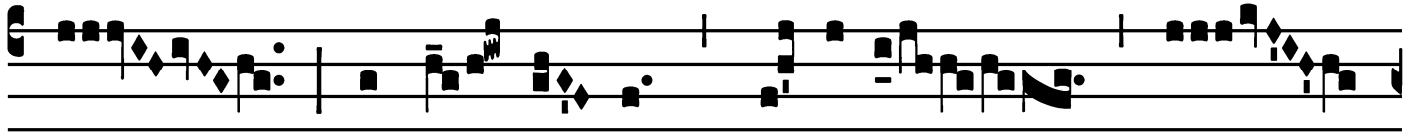
dulcé- di- nis. ∇ . Posu- í- sti

su- per cá- put é- jus co- ró-

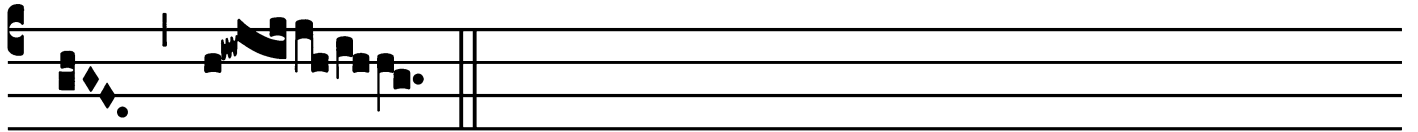
Common of a Martyr Bishop: Mass I

Tract

(Page 2 of 2)



nam de lá- pi- de * pre- ti- ó-



SO.

Common of a Martyr Bishop: Mass I

Offertory

Offert.

2.

V

E-ri-tas mé- a * et mi-se-ri-cór-di-

a mé- a cum í- pso : et in nómi- ne mé-

o exaltábi-tur córnu é- jus.

Common of a Martyr Bishop: Mass I

Communion

Comm. 4.
S Emel jurá-vi * in sáncto mé- o : sémen é-jus
in æ-térnum ma-né- bit : et sédes é-jus sic-ut sol in
conspéctu mé- o, et sic-ut lúna perfécta in æ-tér-
num : et téstis in cóe-lo fidé- lis.

