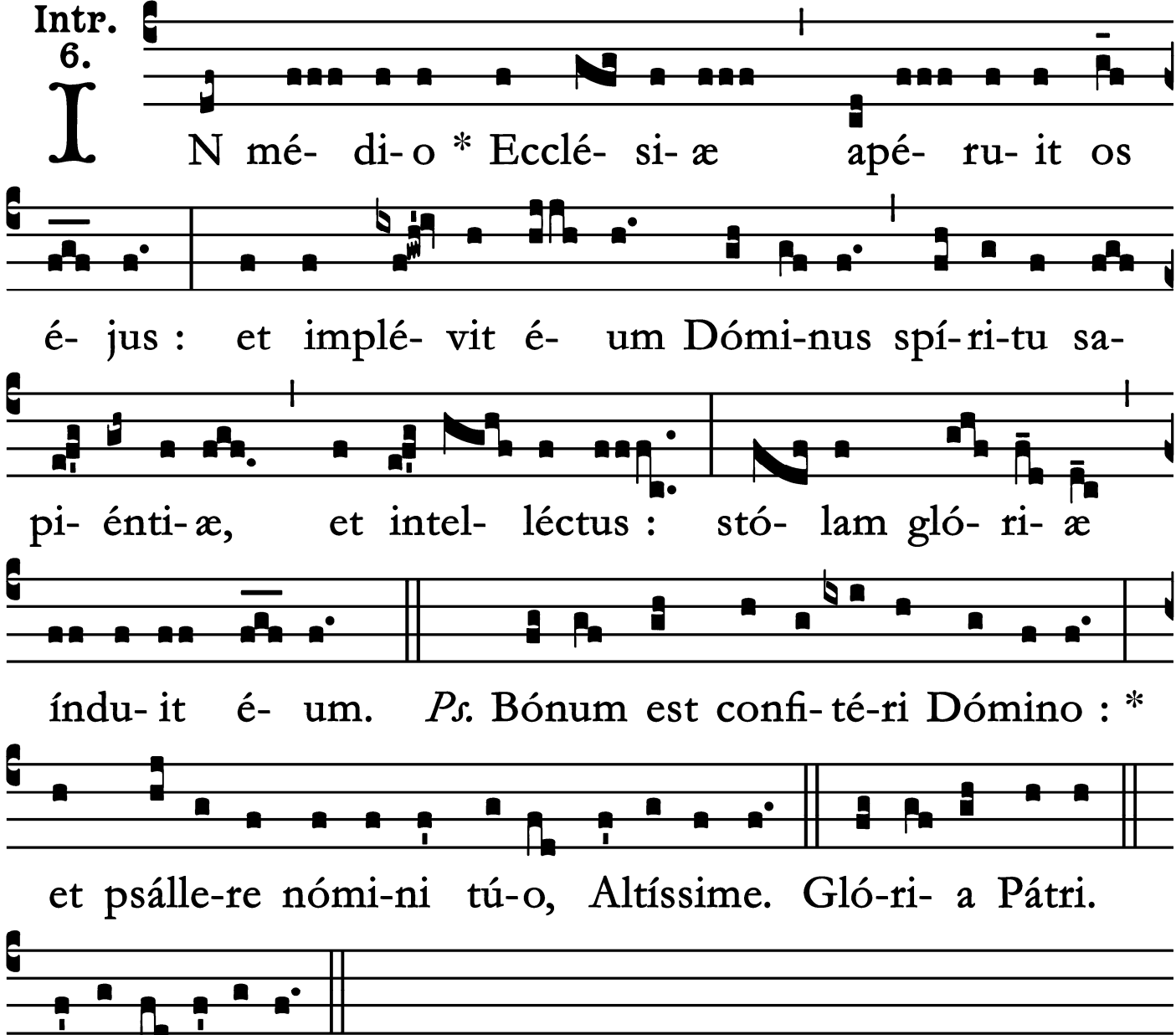


Introit

Intr. 6.



N mé- di- o * Ecclé- si- æ apé- ru- it os
é- jus : et implé- vit é- um Dómi- nus spí- ri- tu sa-
pi- énti- æ, et intel- léctus : stó- lam gló- ri- æ
índu- it é- um. *Ps.* Bónum est confi- té- ri Dómino : *
et psálle- re nómi- ni tú- o, Altíssime. Gló- ri- a Pátri.
E u o u a e.

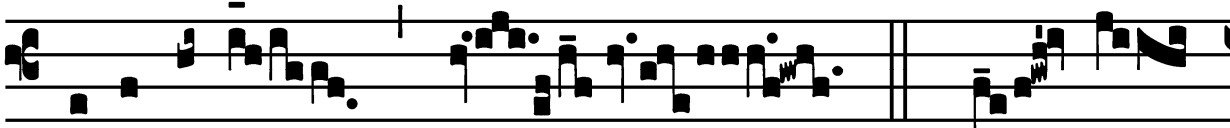
Gradual

Grad. 1.

O S jú- sti * medi- tábi- tur sa-
pi- én- ti- am, et lín- gua é- jus
lo- qué- tur judí- ci- um. \forall . Lex Dé-
i é- jus in cór-
de ipsí- us : et non supplan-
tabún- tur * grés- sus é- jus.

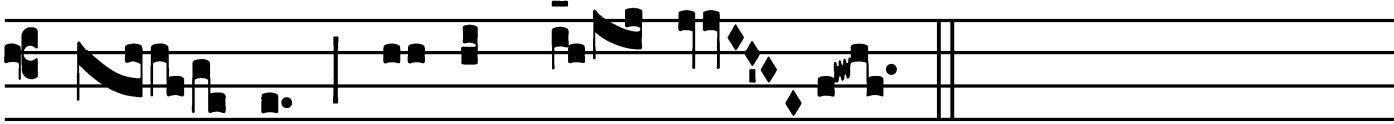
Feast of St. Basil the Great, Bishop, Confessor and Doctor - June 14

Alleluia

2.
A  *Lle-lú-ia.* * *ij.* *Ÿ.* In- vé-

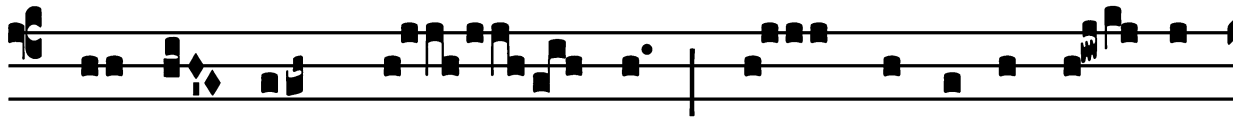
 ni Dá- vid sér-

 vum mé- um : ó- le- o sáncto mé-

 o únxi * é- um.

Offertory

Offert.
2.

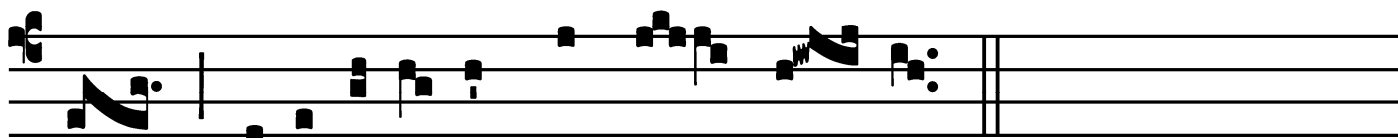


V

E- ri- tas mé- a * et mi-se-ri-cór- di-



a mé- a cum í- pso : et in nómi- ne mé-



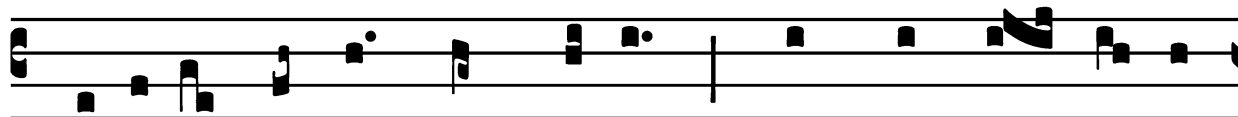
o exaltábi- tur córnu é- jus.

Communion

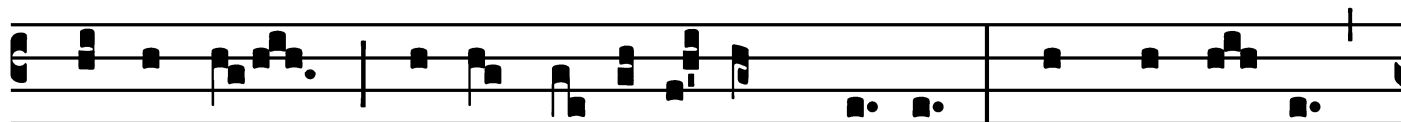
Comm.

7.

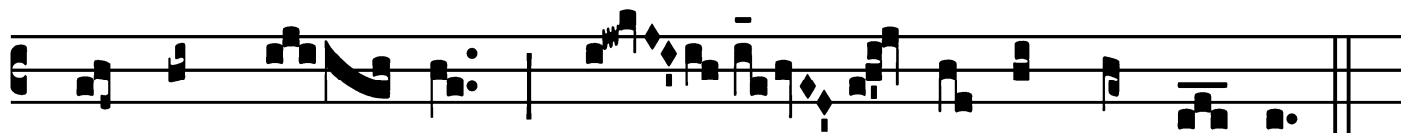
F



Idé-lis sérvus * et prúdens, quem constí- tu- it



Dómi-nus super famí-li- am sú- am : ut det íl- lis



in témpo- re trí- ti- ci mensú- ram.

