

S. Geneviève, Vierge, Patronne de Paris - 3 Janvier

Diocèse de Paris, France

*Introit*

Intr.

3.

G

Audens gaudé- bo \* in DÓ- mi-no, et

exsultá-bit á- nima mé- a in Dé-o mé- o : qui-

a índu-it me vestimén- tis sa-lú- tis, et in-

duménto justí- ti- æ cir-cúm-dedit me, qua-si spón-sam

orná- tam moní- libus sú- is. *T.P.* Alle-lú-ia, alle-

lú- ia. *Ps.* Eructávit cor mé-um vérbum bó-num : \* dí-

co égo ópera mé- a Régi. Glóri- a Pátri. E u o u a e.

S. Geneviève, Vierge, Patronne de Paris - 3 Janvier

Diocèse de Paris, France

*Gradual*

Grad.

3.

**S**

Pon- sá- bo te \* mí- hi in sem-

pi-tér- num, in justí-

ti- a et ju-dí- ci-o, et in mi- se-ra-

ti- ó- ni-bus.  $\nabla$ . Et

sponsá- bo te mí- hi in fí- de, et

scí- es qui- a é- go \*

Dó- mi- nus.

S. Geneviève, Vierge, Patronne de Paris - 3 Janvier  
Diocèse de Paris, France

*Alleluia*

8.  
**A** L- le- lú- ia. \* *ij.*

∩. Mí- hi adhæré- re Dé- o bó- num est :

pó- ne-re in Dómi-no Dé-o \* spem mé- am.

S. Geneviève, Vierge, Patronne de Paris - 3 Janvier

Diocèse de Paris, France

*Sequence*

(Page 1 of 4)

Seq.  
8.

G

Enové-fæ sol-émni-tas, Sol-émne pá-rit gáudi-um :

Córdis e-rúmpat pú-ri-tas In láudis sacri- fí-ci-um. 2. Fé-

lix órtus infántu-læ, Téste Germáno prá-su-le, Quod

præ- ví-dit in spí-ri-tu, Rérum probá-tur éx-i-tu. 3. Hic, ad

péctus virgíne-um, Pro pudó-ris signácu-lo, Númmum

suspéndit áne-um, Insígnem crú- cis tí-tu-lo. 4. Ge-

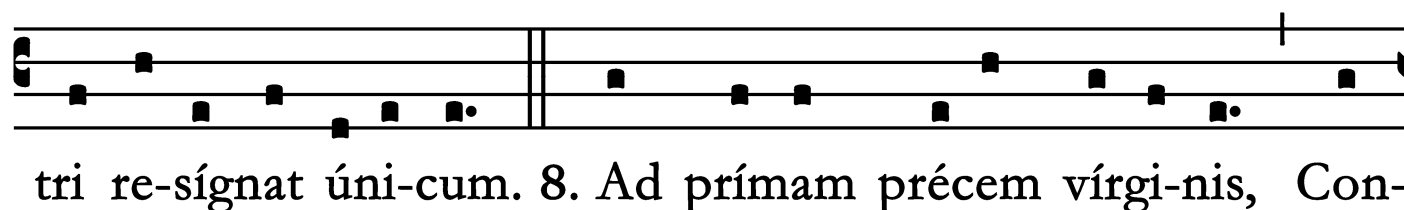
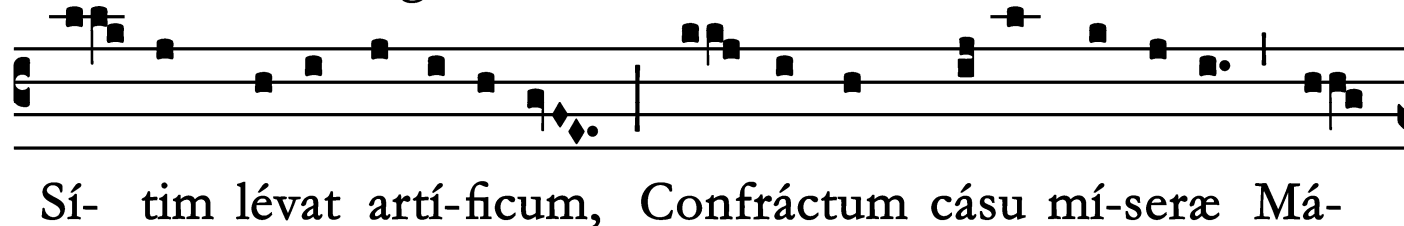
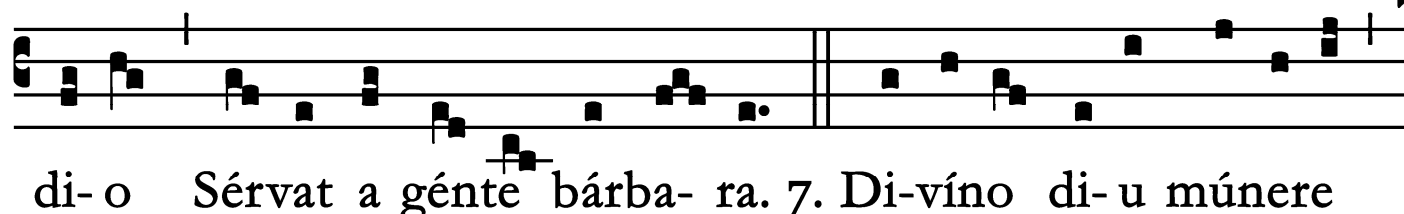
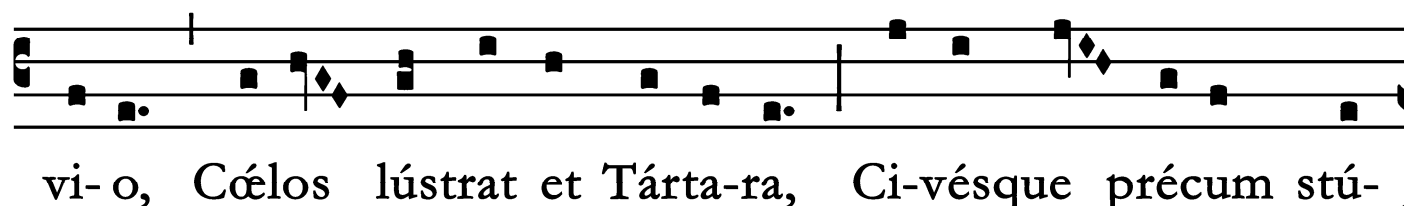
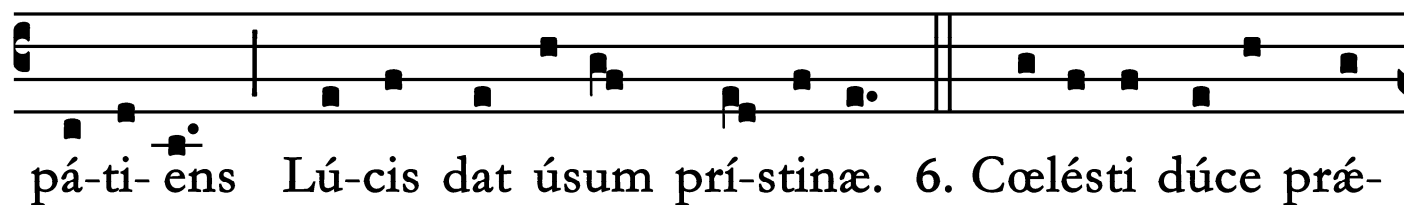
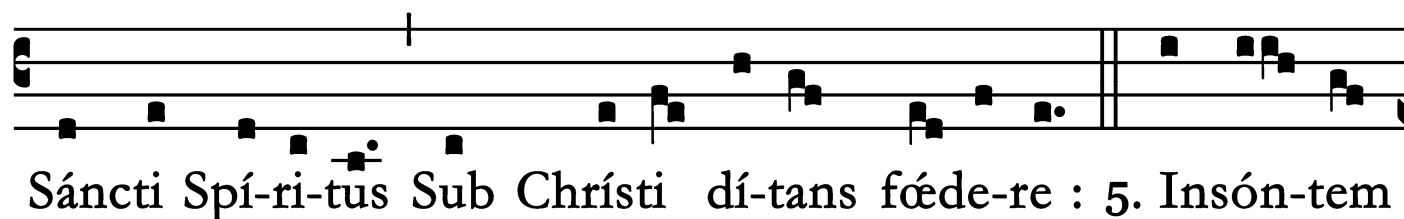
no-vé-fam di-ví-ni-tus Obláto dótat mú-ne-re, In témplum

S. Geneviève, Vierge, Patronne de Paris - 3 Janvier

Diocèse de Paris, France

*Sequence*

(Page 2 of 4)

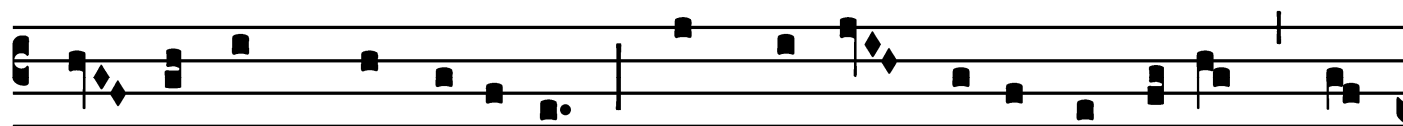


S. Geneviève, Vierge, Patronne de Paris - 3 Janvier

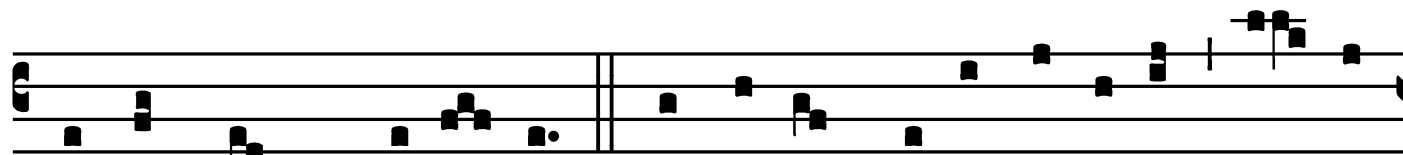
Diocèse de Paris, France

*Sequence*

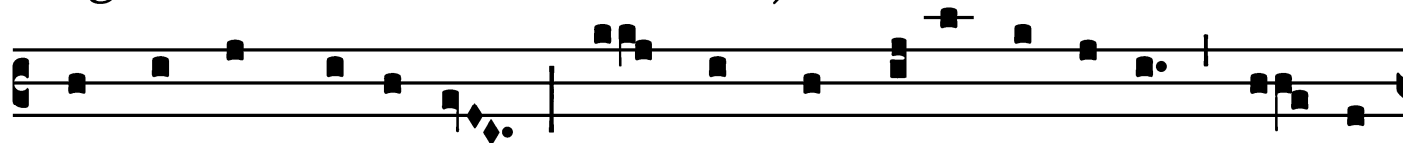
(Page 3 of 4)



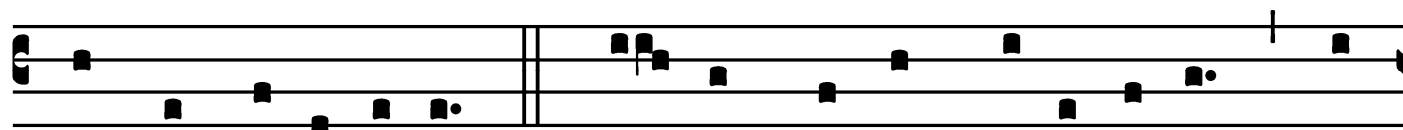
tre- míscunt dæmóni- a, Pax dá-tur energúmenis, Spes



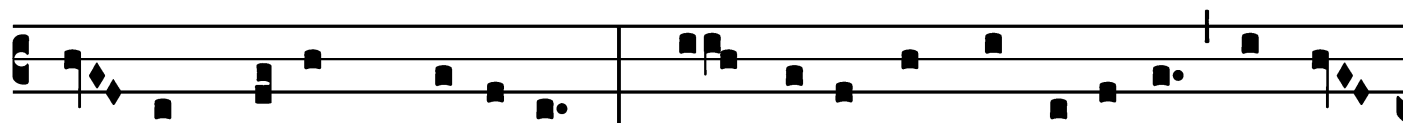
ægris, ré- is véni- a. 9. In é-jus mánu cé-re- i Re- ac-



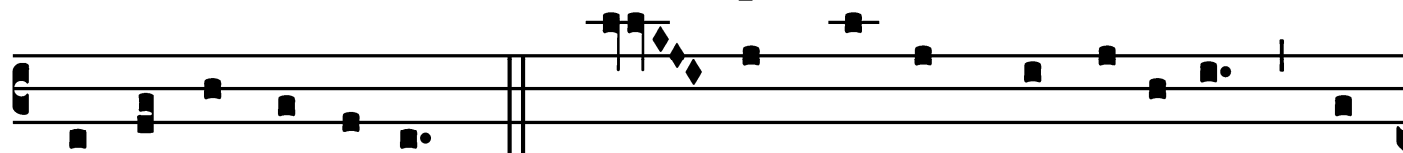
cendúntur có-li-tus : Per hanc in sínus álve- i Ré- dit



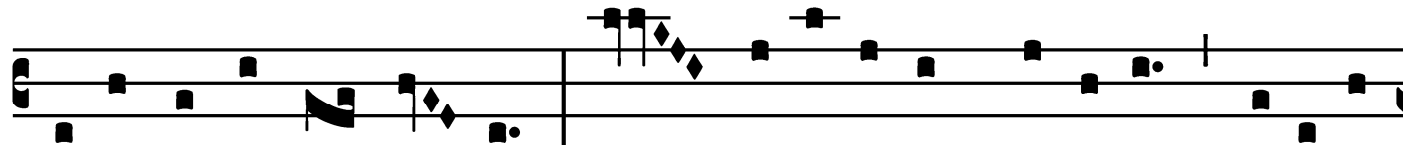
ámnis co- érci-tus. 10. I-gnem sácrum refrí-ge-rat, Post



mór-tem vívens mé-ri-tis, Quæ pri- us in se více-rat Æstus



intérni fómi-tis. 11. Mór- ti, mórbis, dæmónibus Et



e-leméntis ímpe- rat : Sic Genové-fa, pré-cibus, Natúrae

S. Geneviève, Vierge, Patronne de Paris - 3 Janvier

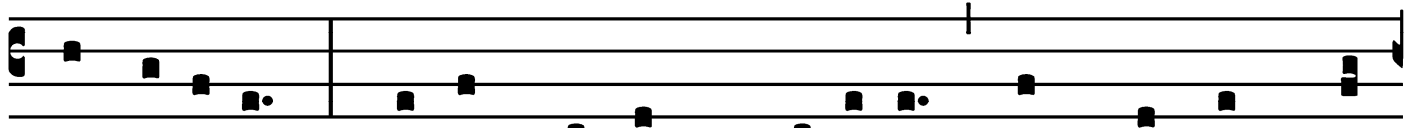
Diocèse de Paris, France

*Sequence*

(Page 4 of 4)



léges sú-pe- rat. 12. Ope-rá-tur in párvu-lis Chrísti vírtus



magná-li- a : Chrísto, pro tot mí-rácu-lis, Laus fréquens, jú-



gis gló-ri- a. Amen. Alle-lú-ia.

S. Geneviève, Vierge, Patronne de Paris - 3 Janvier

Diocèse de Paris, France

*Offertory*

Offert.

6.

O

Genové-fa, \* ré-spi-ce nos pi-e-tá-tis

ó-cu-lo : cónsors lú-cis angé-li-cæ, Ré-gis

assí-stens vúl-tu-i, nos Dé-o re-concí-

li-a. *T.P.* Alle-lú-ia.



S. Geneviève, Vierge, Patronne de Paris - 3 Janvier  
Diocèse de Paris, France

# Communion

Comm.  
5.

**T**

U gló- ri- a \* Je- rú- sa- lem, tu læ- tí- ti- a

Is- ra- ël, tu hono- ri- ficén- ti- a † pó- pu- li nó-

stri, al- le- lú- ia.

*Post Septuagesimam :*

† pópu- li nóstri.

Offices Propres du Diocèse de Paris  
Société de S. Jean l'Évangéliste, Desclée et Socii, 1926.  
Supplement to Paroissien Romain No. 800.

