

## Introit

Intr. 6.

N mé- di- o \* Ecclé- si- æ apé- ru- it os  
é- jus : et implé- vit é- um Dómi- nus spí- ri- tu sa-  
pi- énti- æ, et intel- léctus : stó- lam gló- ri- æ  
índu- it é- um. *Ps.* Bónum est confi- té- ri Dómino : \*  
et psálle- re nómi- ni tú- o, Altíssime. Gló- ri- a Pátri.  
E u o u a e.

## Gradual

Grad.

5.

**G**

C-ce \* sacérdos má- gnus, qui in di-é-

bus sú- is plá- cu- it Dé- o.

∇. Non est invéntus sími- lis íl-li,

qui conservá-

ret \* légem Excél- si.

# Alleluia

1.  
**A** Lle- lú-ia. \* *ij.*

∇. Be- á- tus vir, qui súf- fert

ten- ta- ti- ó- nem : quó- ni- am cum probá- tus fú-

e- rit, accí- pi- et co- ró- nam \* ví- tæ.

*Tract*

Tract.  
8.

**B**

E-á- tus vir, \* qui tímet Dó- mi-

num : in man-dá- tis é- jus

cú- pit ni- mis.  $\nabla$ . Pót- ens in térra

é-rit sémen é- jus : ge-ne- rá- ti-o re- ctó-

rum be- ne- di-cé-tur.

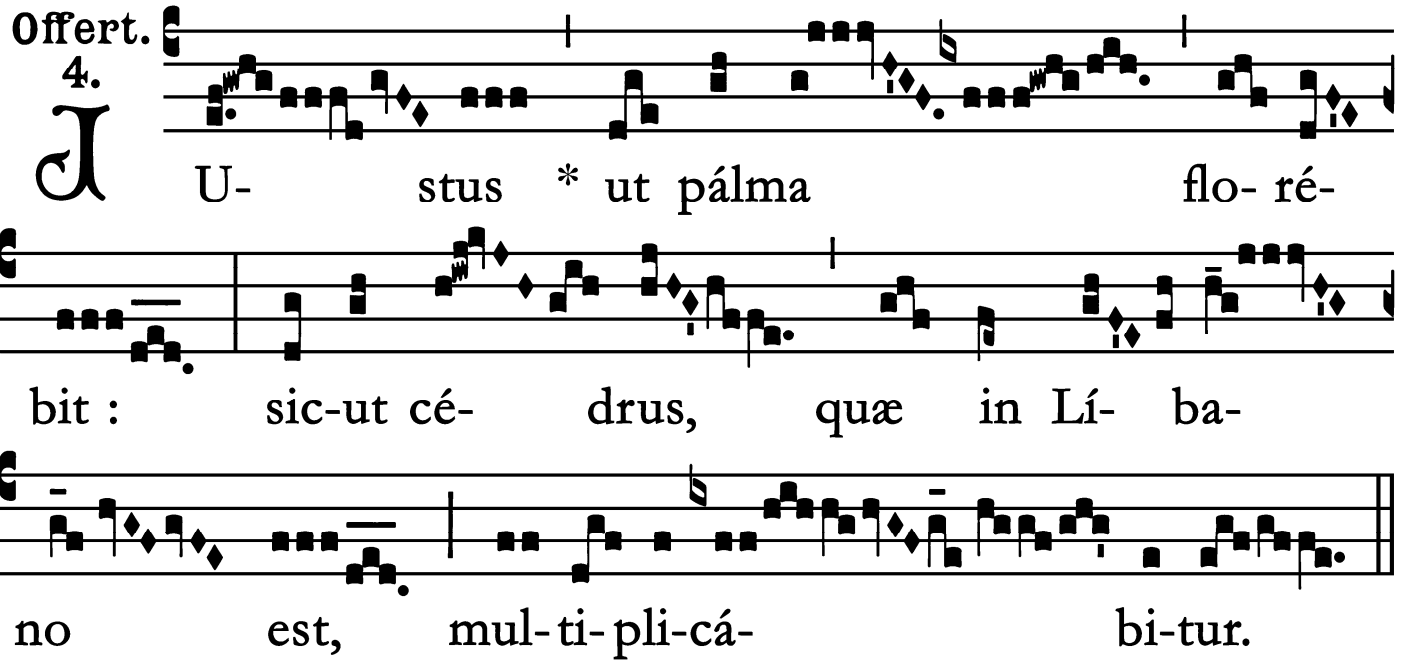
$\nabla$ . Gló- ri- a et di-ví-ti-æ in dómo é- jus : et

ju- stí- ti- a é- jus má- net \* in sá- cu- lum

sá- cu- li.

# Offertory

Offert. 4.



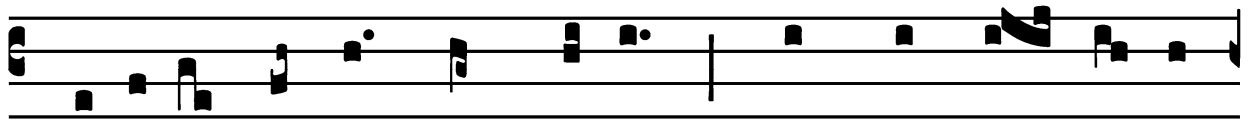
**J** U- stus \* ut pálma flo- ré-  
bit : sic-ut cé- drus, quæ in Lí- ba-  
no est, mul-ti-pli-cá- bi-tur.

## Communion

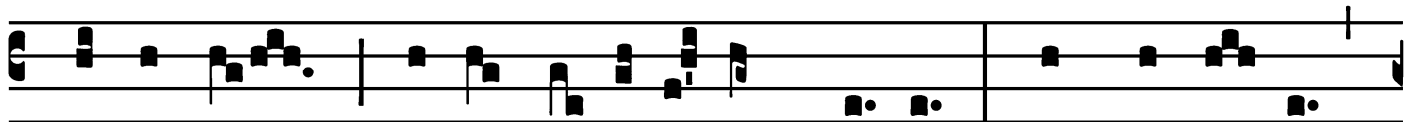
Comm.

7.

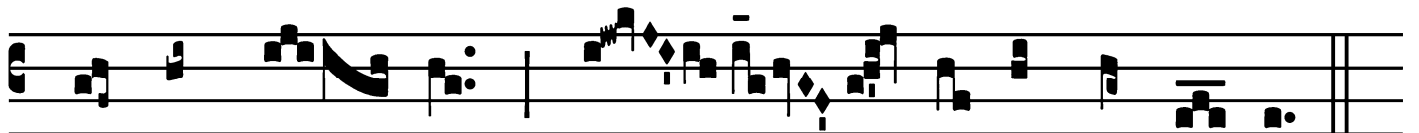
**F**



Idé-lis sérvus \* et prúdens, quem constí- tu- it



Dómi-nus super famí-li- am sú- am : ut det íl- lis



in témpo- re trí- ti- ci mensú- ram.

