

S. Louis, Roi de France, Confesseur - Août 25

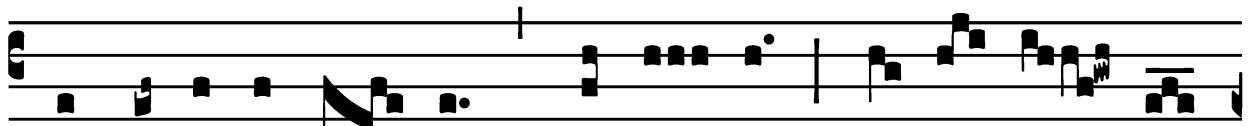
Diocèse de Paris, France

*Introit*

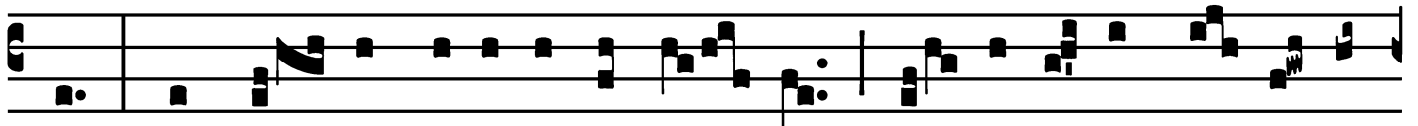
Intr.

7.

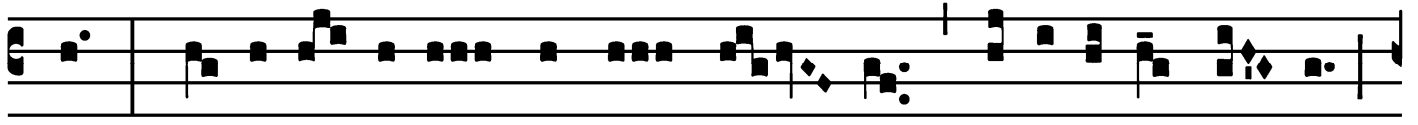
I



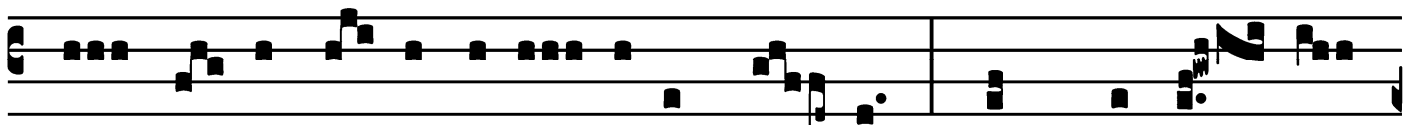
N virtú-te tú- a, \* Dómi- ne, læ-tá- bi- tur



rex, et su- per salu-tá-re tú- um ex-sultá-bit ve-hemén-



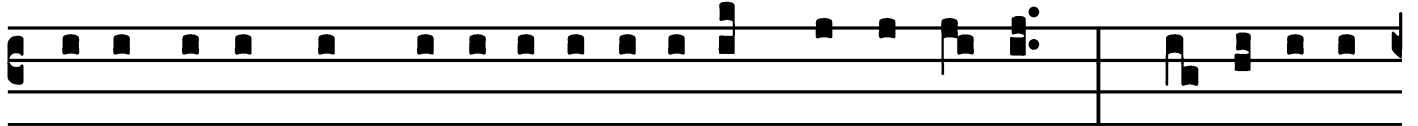
ter : de-sidé- ri-um córdis é- jus tribu-ísti é- i,



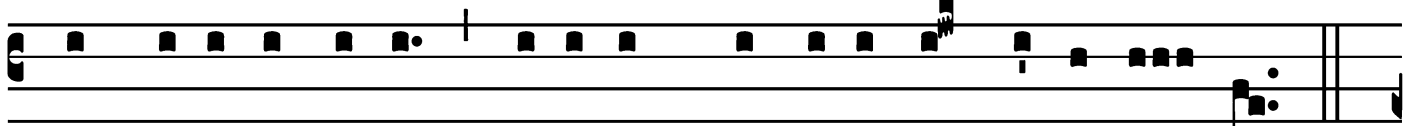
et vo- luntá- te labi- órum é- jus non fraudá- sti



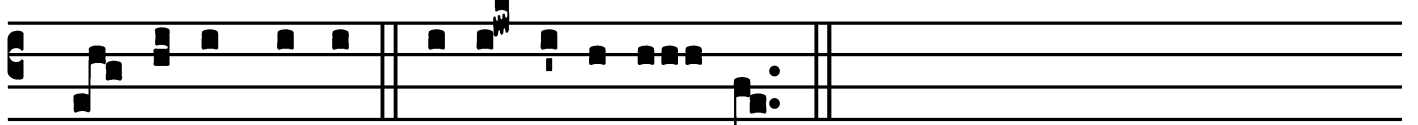
é- um. *T. P.* Alle-lú- ia, alle- lú- ia. *Ps.* Præ- ve-



nísti é- um in benedicti- ónibus dulcé-di- nis : \* po-su- ísti



in cápi-te é-jus corónam de lápi-de pre-ti- ó- so.



Gló- ri- a Pátri. E u o u a e.

S. Louis, Roi de France, Confesseur - Août 25

Diocèse de Paris, France

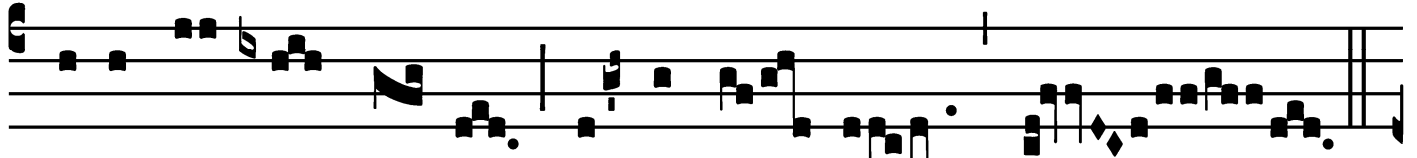
*Gradual*

Grad.

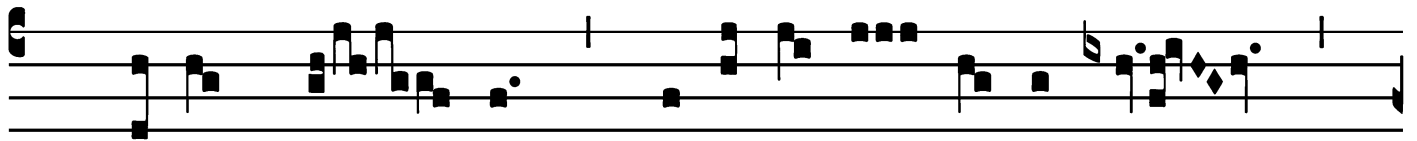
1.  
**I**



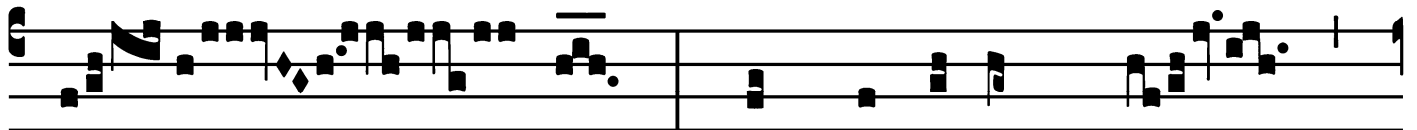
Nvéni Dá- vid \* sér- vum mé-um, ó-



le-o sáncto mé- o únxi é- um.



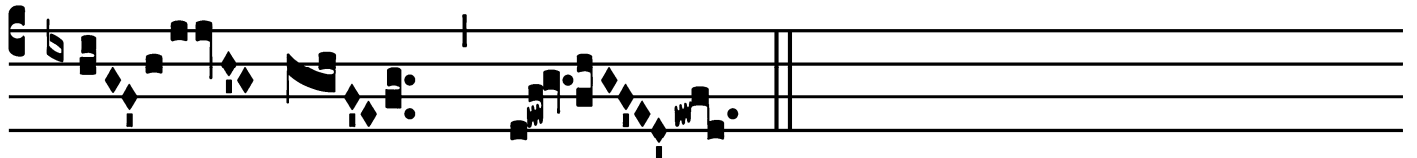
∞. Mánus mé- a auxi- li- á- bi- tur é-



i, et bráchi- um mé-



um con- fortá- bit



\* é- um.

S. Louis, Roi de France, Confesseur - Août 25

Diocèse de Paris, France

*Alleluia*

1.  
**A** L- le- lú- ia. \* *ij.*

Ÿ. Be- ne- dí- ctus Dó-

mi- nus Dé- us mé- us, qui dócet má-

nus mé- as \* ad præ- li-

um.

S. Louis, Roi de France, Confesseur - Août 25

Diocèse de Paris, France

*Alleluia*

(Autre chant solennel du même verset)

5.  
**A**

Lle- lú- ia. \* *ij.*

¶. Benedí- ctus Dó- mi-nus Dé-

us, qui dó- cet má- nus mé- as

\* ad præ- li- um.

Cette mélodie fut composée en 1299, par Pierre de la Croix, maître de musique de Notre-Dame de Paris, à l'occasion de la canonisation de S. Louis.

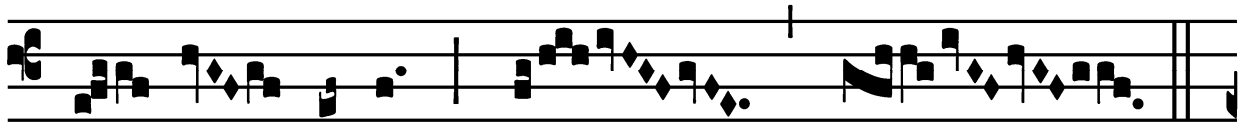
S. Louis, Roi de France, Confesseur - Août 25

Diocèse de Paris, France

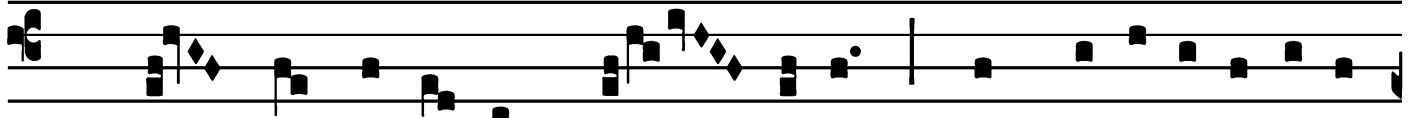
*Alleluia*

(Au Temps Pascal)

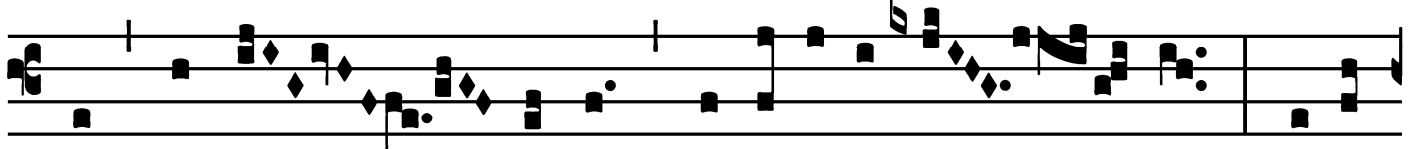
2.  
**A**



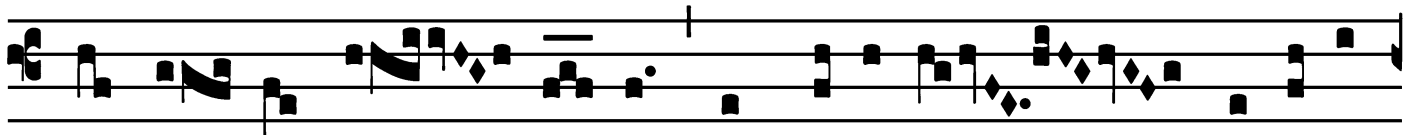
L- le- lú-ia. \* *ij.*



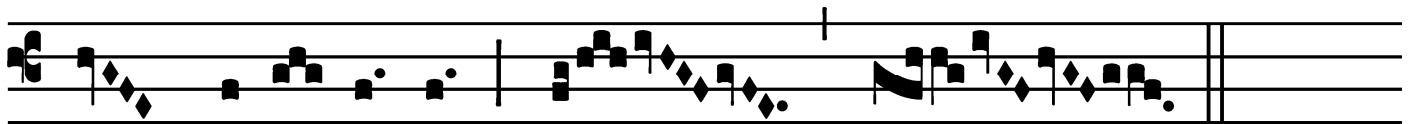
Ÿ. Qui das sa-lú-tem ré- gibus, in benedicti- óni-



bus dulcé- di-nis præveni- sti é- um : ætér-



næ ví- tæ co- ró-nam in cápi-te Ludoví-



ci \* posu- í-sti.

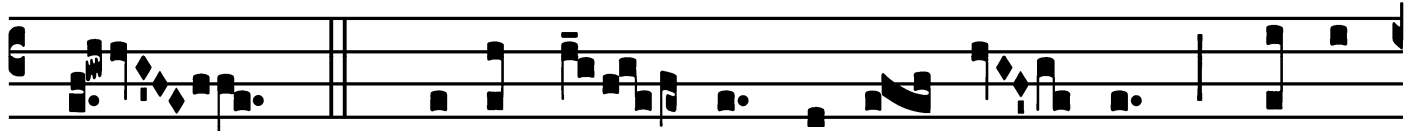
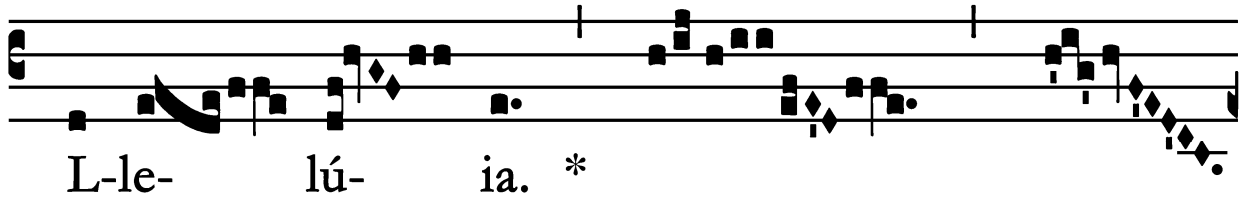
S. Louis, Roi de France, Confesseur - Août 25

Diocèse de Paris, France

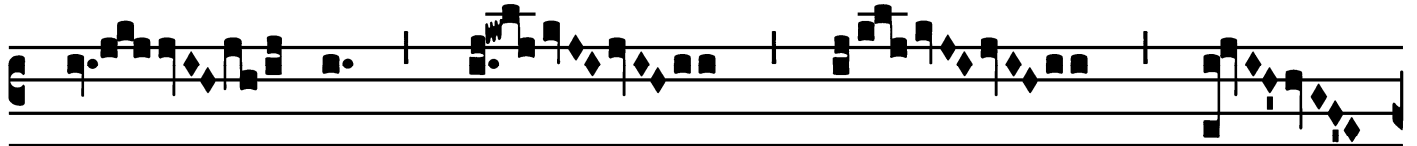
*Alleluia*

(Au Temps Pascal)

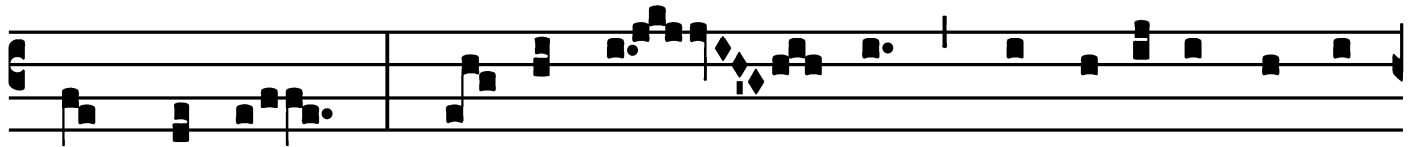
7.  
**A**



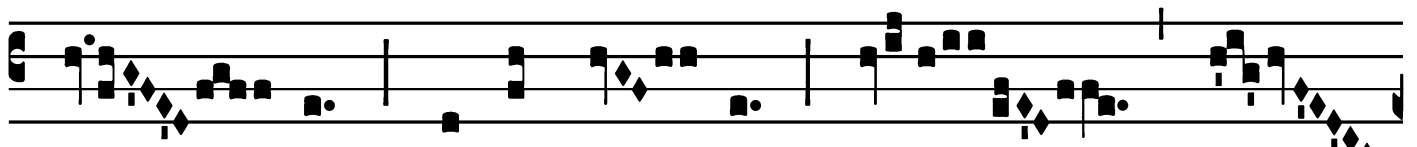
V. Ave sán- cte Ludo- ví- ce, fú-sa



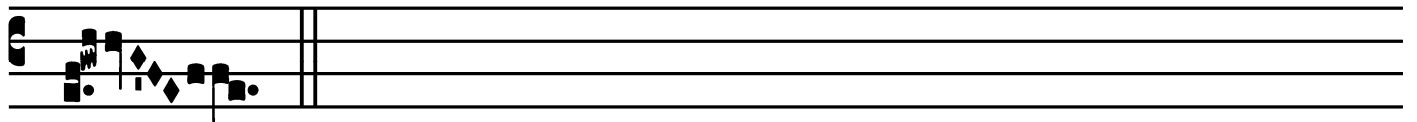
Dé- o pré-



cum ví-ce, sól-ve ré-



tó- rum \* et a póe- na.



S. Louis, Roi de France, Confesseur - Août 25

Diocèse de Paris, France

*Tract*

Tract.

8.

**B**

E-á- tus vir, \* qui tímet Dó- mi-

num : in man-dá- tis é- jus

cú- pit ni- mis. √. Pót- ens in térra

é-rit sémen é- jus : ge- ne- rá- ti- o re- ctó-

rum be- ne- di- cé- tur.

√. Gló- ri- a et di- ví- ti- æ in dómo é- jus : et

ju- stí- ti- a é- jus má- net \* in sá- cu- lum

sá- cu- li.

S. Louis, Roi de France, Confesseur - Août 25

Diocèse de Paris, France

# Offertory

Offert.

7.

**D**

E ó- mni \* cór- de sú- o laudá- vit Dó-

mi- num : et di- lé- xit Dé- um, qui fé- cit íl- lum : dé-

dit in ce- lebra- ti- ó- nibus dé- cus, ut laudá- rent nó-

men sánctum Dómi- ni, et ampli- fi- cá- rent ma-

ne Dé- i sancti- tá-

tem. *T. P.* Alle-

lú- ia.



S. Louis, Roi de France, Confesseur - Août 25

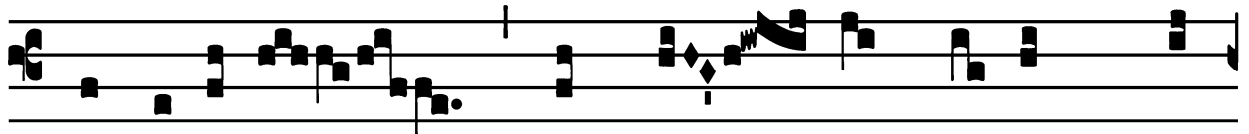
Diocèse de Paris, France

# Communion

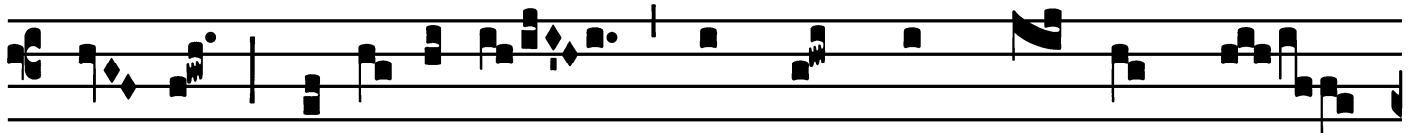
Comm.

2.

I



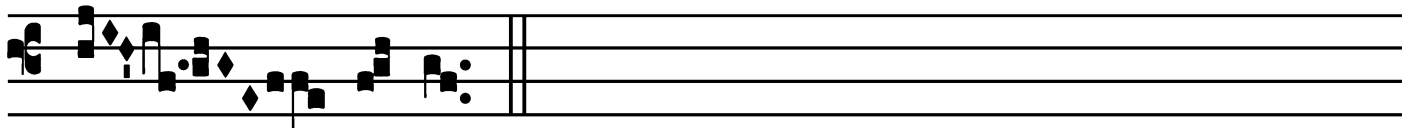
Ntro- íbo \* in dó- mum tú- am, Dó-



mi- ne, ado-rábo ad témplum sánctum tú-



um, et confi-té-bor nó-mi-ni tú- o. *T.P.* Alle-



lú-ia.

Offices Propres du Diocèse de Paris  
Société de S. Jean l'Évangéliste, Desclée et Socii, 1926.  
Supplement to Paroissien Romain No. 800.

