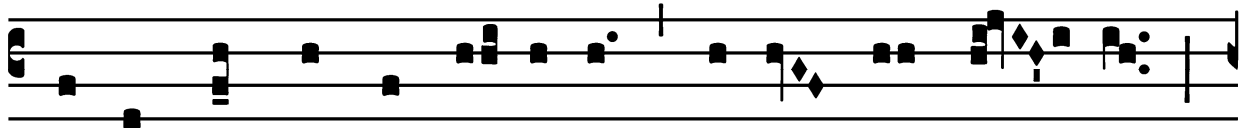


Introit

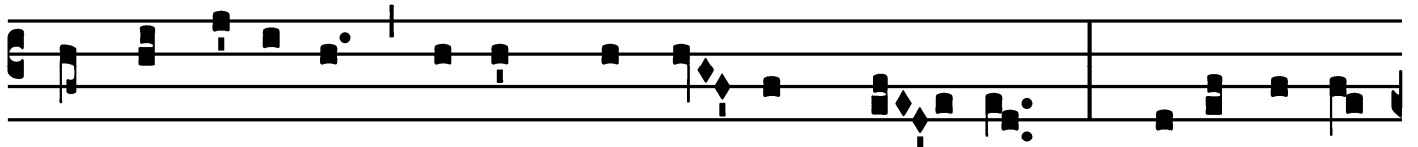
Intr.

5.

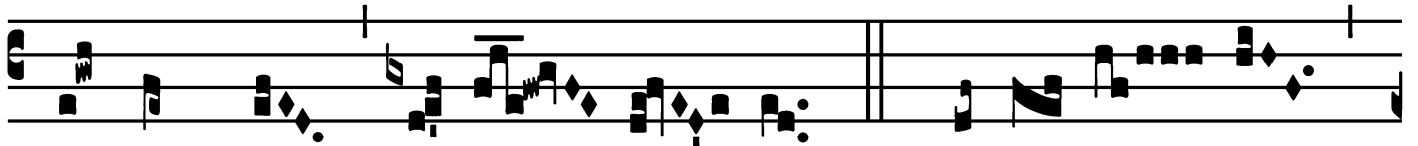
P



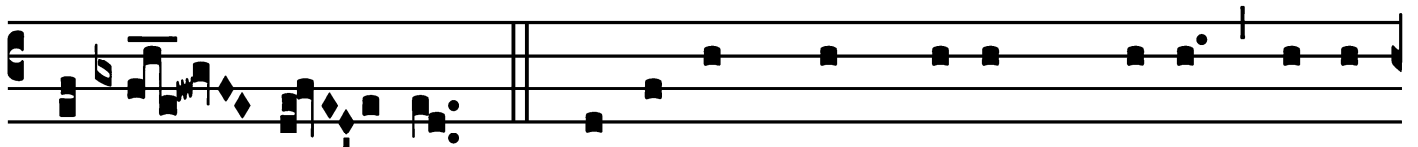
One me * ut signá-cu-lum super cor tú- um,



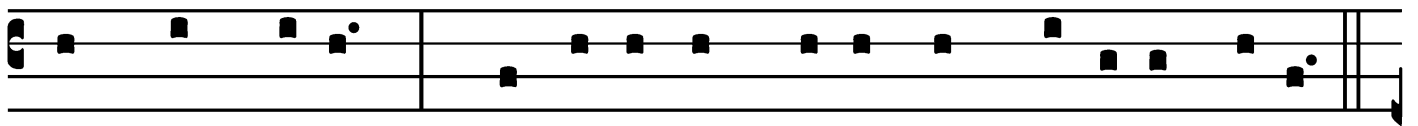
ut signácu-lum super bráchi- um tú- um : qui- a fórtis



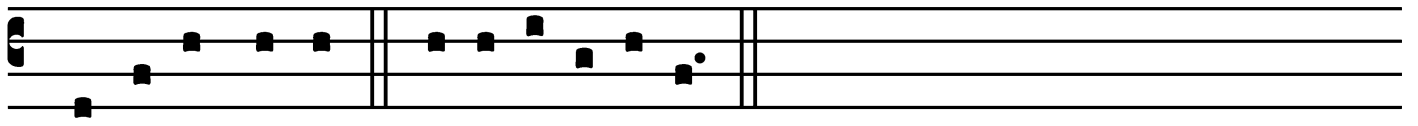
est ut mors di- lé- cti- o. *T.P.* Alle- lú- ia,



al-le- lú- ia. *Ps.* Pa-rá-tum cor mé-um, Dé-us, pa-rá-



tum cor mé-um : * cantábo et psállam in gló-ri- a mé-a.



Gló-ri- a Pátri. E u o u a e.

Feast of St. Madeleine-Sophie Barat, Virgin – May 25

Gradual

(Outside Paschal Time)

Grad.

1.

Q

Uæ-sí- vi * sapi- én-ti- am pa- lam in ora-

ti- ó- ne mé- a : ambu-lá- vit pes

mé- us í- ter ré- ctum, a juventú- te

mé- a investigá- vi * é- am.

∞. Dánti mí- hi

sapi- én- ti- am dá-

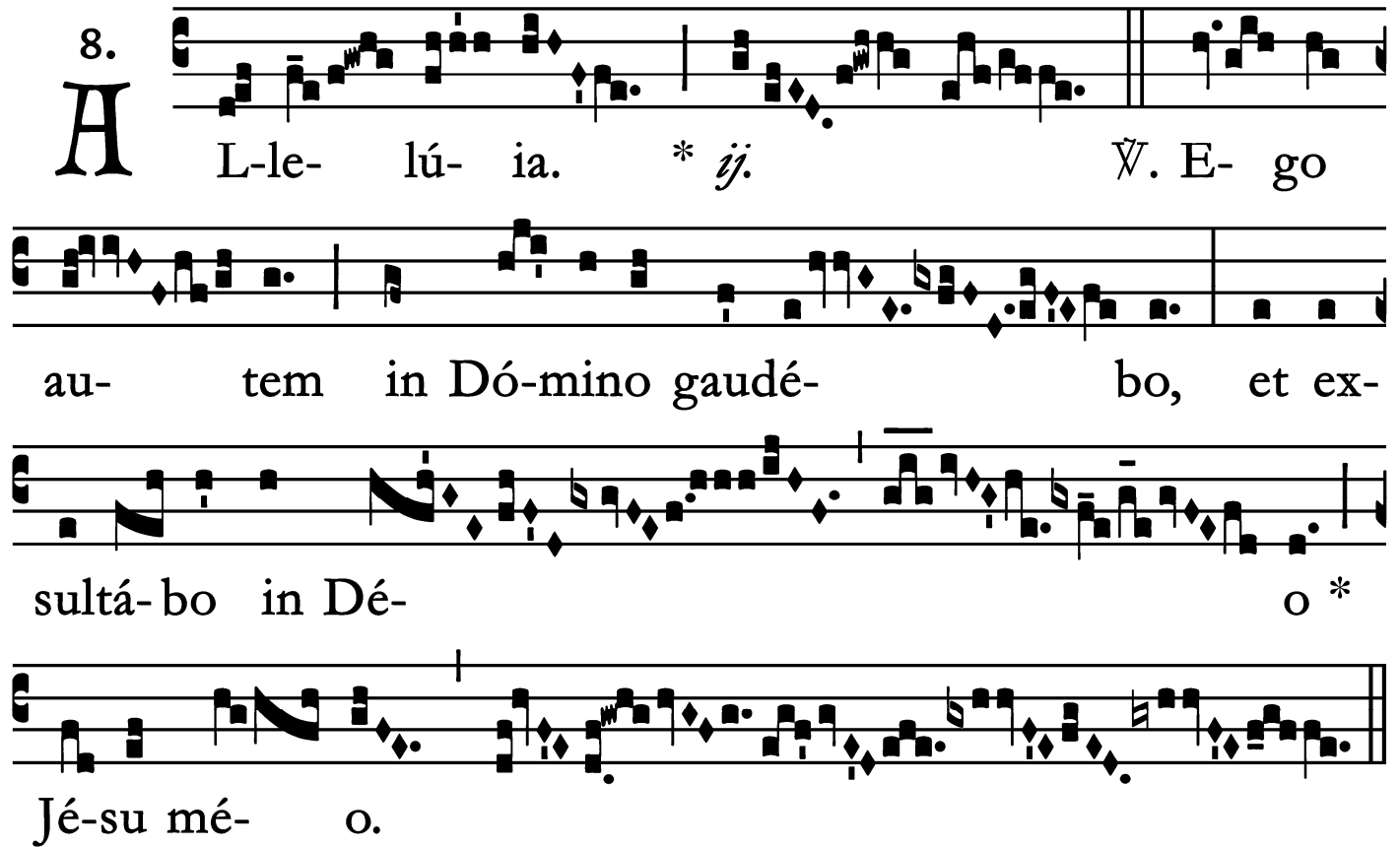
bo * gló- ri- am.

Feast of St. Madeleine-Sophie Barat, Virgin – May 25

Alleluia

(Outside Paschal Time)

8.



A L-le- lú- ia. * *ij.* V̇. E- go
au- tem in Dó-mino gaudé- bo, et ex-
sultá-bo in Dé- o *
Jé-su mé- o.

Feast of St. Madeleine-Sophie Barat, Virgin – May 25

Alleluia
(In Paschal Time)

8.
A L- le- lú- ia. * *ij.*

Ÿ. Mí- hi autem adhæré- re Dé- o bó- num

est : pó- ne-re in Dómi-no Dé-o spem * mé-

am.

Feast of St. Madeleine-Sophie Barat, Virgin – May 25

Second Alleluia

(In Paschal Time)

7.
A Lle-lú- ia. *

∩. Exsultá- vit cor mé- um in Dó- mi- no,

et ex-altá-tum est córnu mé- um * in

Dé- o mé- o.

Offertory

Offert.

4.

A

F-fe-réntur * ré-gi vír-gi-nes : pró-ximæ

é-jus affe-rén-tur tí-bi in læ-tí-ti-a

et exsulta-ti-ó-ne : addu-cén-tur in tém-

plum ré-gi Dó-mi-no. *T. P.* Al-le-

lú-ia.

Feast of St. Madeleine-Sophie Barat, Virgin – May 25

Communion

Comm.
5.



Q UI suscépe-rit * únum párvu-lum ta- lem in nómi-
ne mé-o me súsci- pit. *T.P.* Alle- lú- ia.

Proper Feasts kept in the Dioceses of
The United States of America
Desclee & Co., 1961 (amended 1963)
Supplement to the Liber Usualis, No. 801

