


## Introit

Intr. 3.  
**S**



A- cer-dó- tes tú- i, \* DÓ-mi-ne, ín-du- ant  
justí- ti- am, et sáncti tú- i ex-súltent :  
propter Dá- vid sér- vum tú- um, non a-vér-  
tas fá- ci- em Chrí- sti tú- i. *Ps.* Meménto DÓ-  
mine Dá- vid : \* et ómnis mansu- e-tú- di- nis é-jus.  
Gló-ri- a Pátri. E u o u a e.

Feast of St. Paulinus, Bishop and Confessor - June 22

*Gradual*

Grad.

5.

**G**

C-ce \* sacerdos má- gnus, qui in di-é-

bus sú- is plá- cu- it Dé- o.

∇. Non est invéntus sími- lis íl-li,

qui conservá-

ret \* légem Excél- si.

Feast of St. Paulinus, Bishop and Confessor - June 22

*Alleluia*

8.  
**A**

Lle- lú-ia. \* *ij.*

Ÿ. Tu es sacér- dos in æ- tér- num,

se- cúndum ór- di- nem \* Melchí- sedech.

# Offertory

Offert.  
8.

**I**

Nvé-ni \* Dá-vid sérvum mé- um, ó- le- o sán-

cto únxi é- um : má-nus e- nim mé- a

auxi-li- á- bi-tur é- i, et bráchi- um mé- um

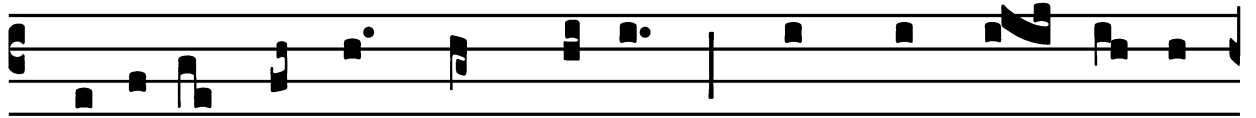
confortá- bit é- um.

## Communion

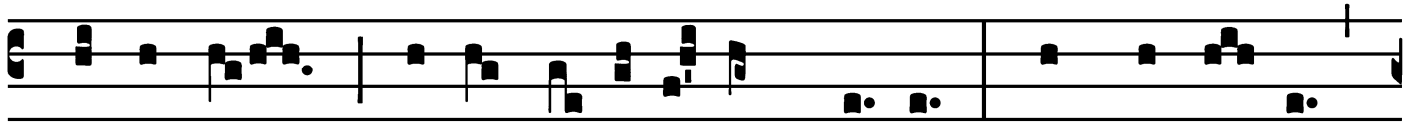
Comm.

7.

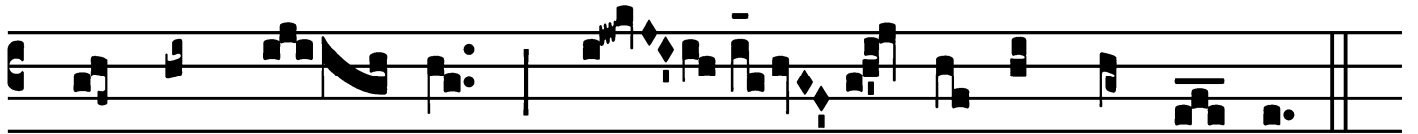
**F**



Idé-lis sérvus \* et prúdens, quem constí- tu- it



Dómi-nus super famí-li- am sú- am : ut det íl- lis



in témpo- re trí- ti- ci mensú- ram.

