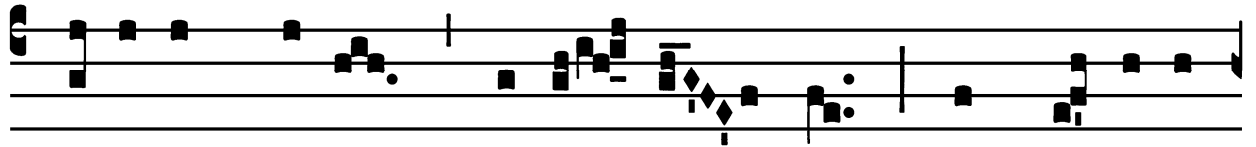


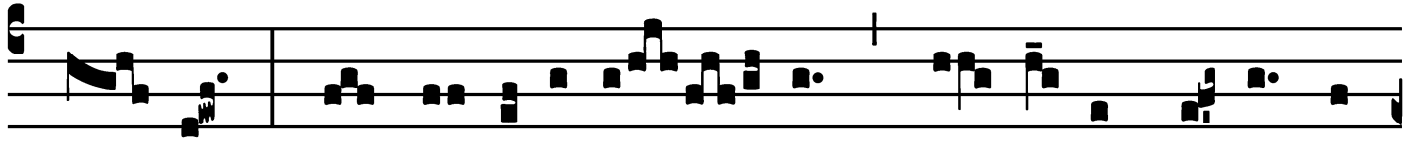
## Introit

Intr.  
3.

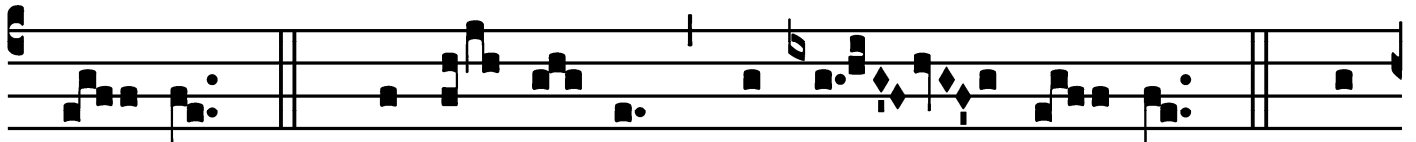
**C**



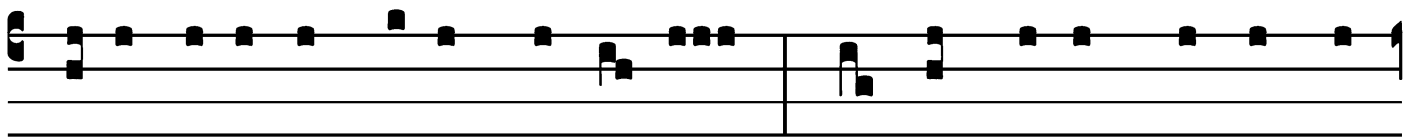
Ari-tas Dé- i \* diffú- sa est in córdibus



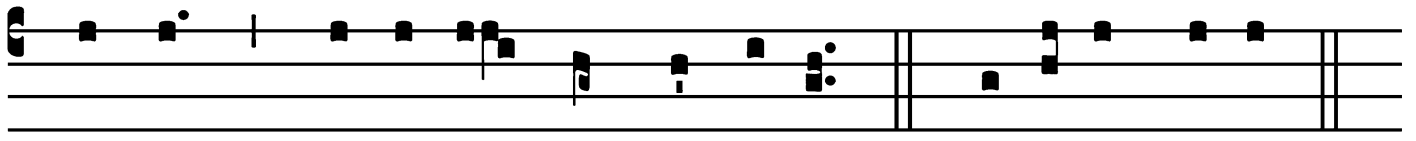
nó- stris per inhabi-tán- tem Spí- ri- tum é- jus in



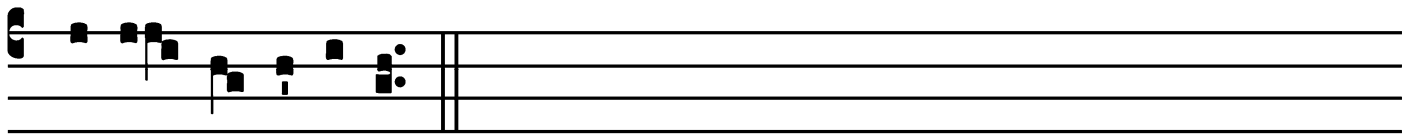
nó- bis. *T. P.* Alle- lú- ia, al- le- lú- ia. *P.* Bé-



nedic ánima mé- a Dómi- no : \* et ómni- a quæ intra



me sunt, nómi- ni sáncto é- jus. Gló- ri- a Pátri.



E u o u a e.

## Gradual

Grad.

5.

**V**

Ení-te fí-li-i, \* audí-te me : timó-rem

Dómi-ni docébo vos.

∩. Accé-di-te

ad é-um, et

illumi-námi-ni : et fá-ci-es véstræ \* non con-fun-

déntur.

# Alleluia

4.  
**A** Lle- lú- ia. \* *ij.* ¶. De excél-  
so mí- sit í- gnem in óssi-bus mé-  
is, \* et e-ru- dí-vit me.

Feast of St. Philip Neri, Confessor – May 26

## *Second Alleluia*

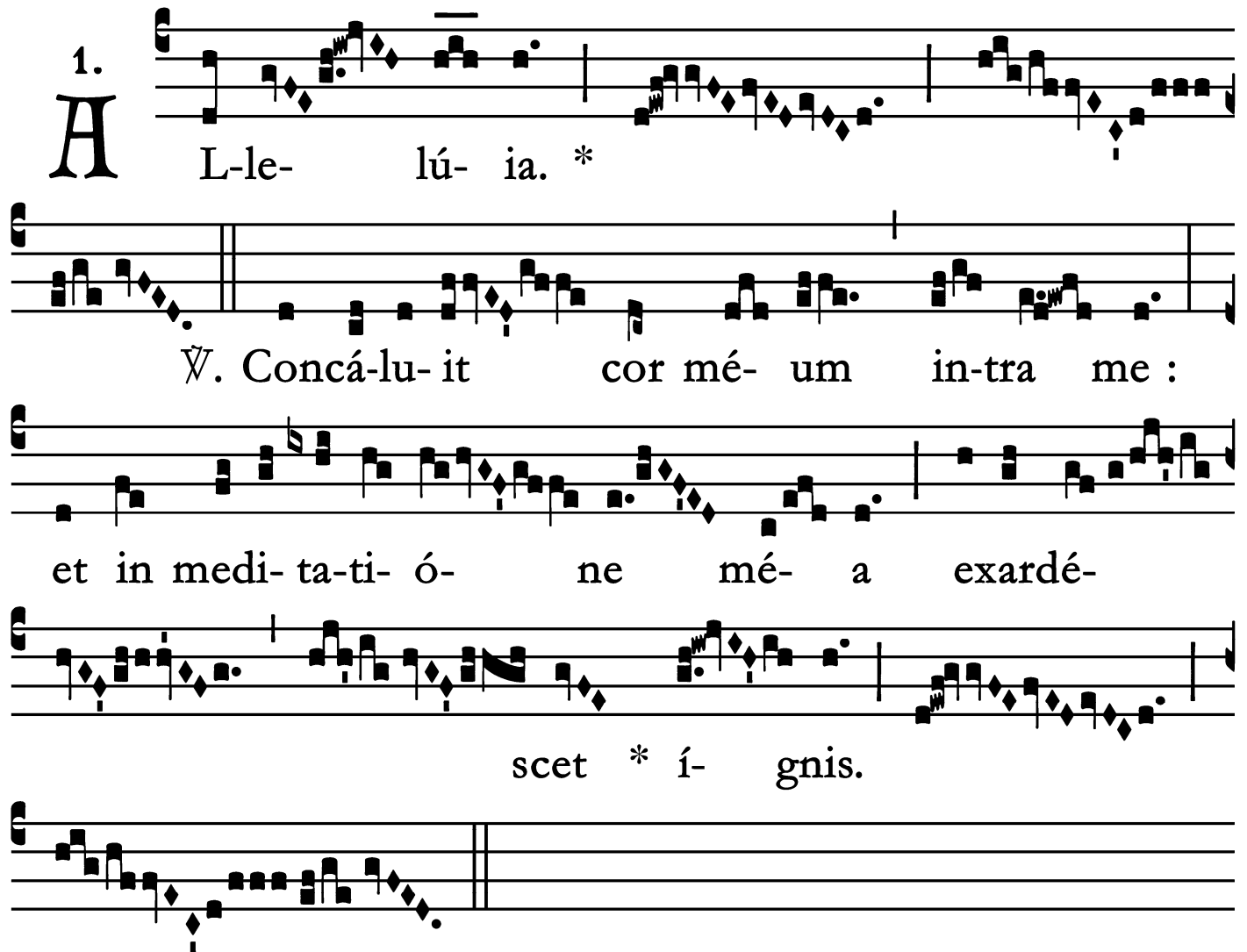
(In Paschal Time)

1.  
**A** L-le- lú- ia. \*

∇. Con-cá-lu- it cor mé- um in-tra me :

et in medi-ta-ti- ó- ne mé- a exardé-

scet \* í- gnis.



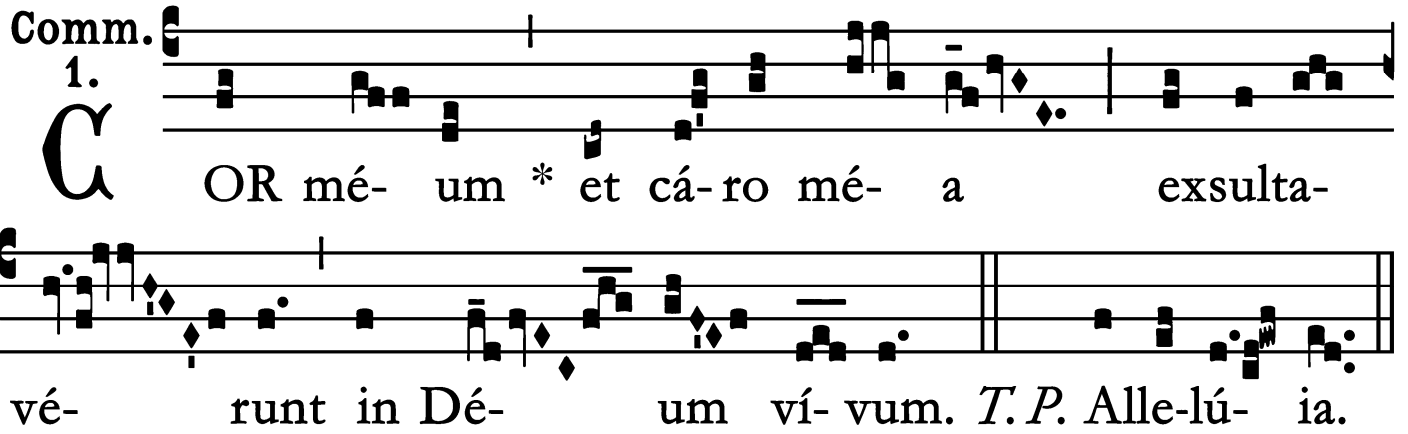
# Offertory

Offert.  
8.

**V** I- am \* man- da- tó- rum tu- ó- rum  
cucúr- ri, cum di- la- tá- sti  
cor mé- um. *T. P.* Al- le-  
lú-ia.

# Communion

Comm. 1.



**C**OR mé- um \* et cá-ro mé- a exsulta-  
vé- runt in Dé- um ví- vum. *T.P.* Alle-lú- ia.

