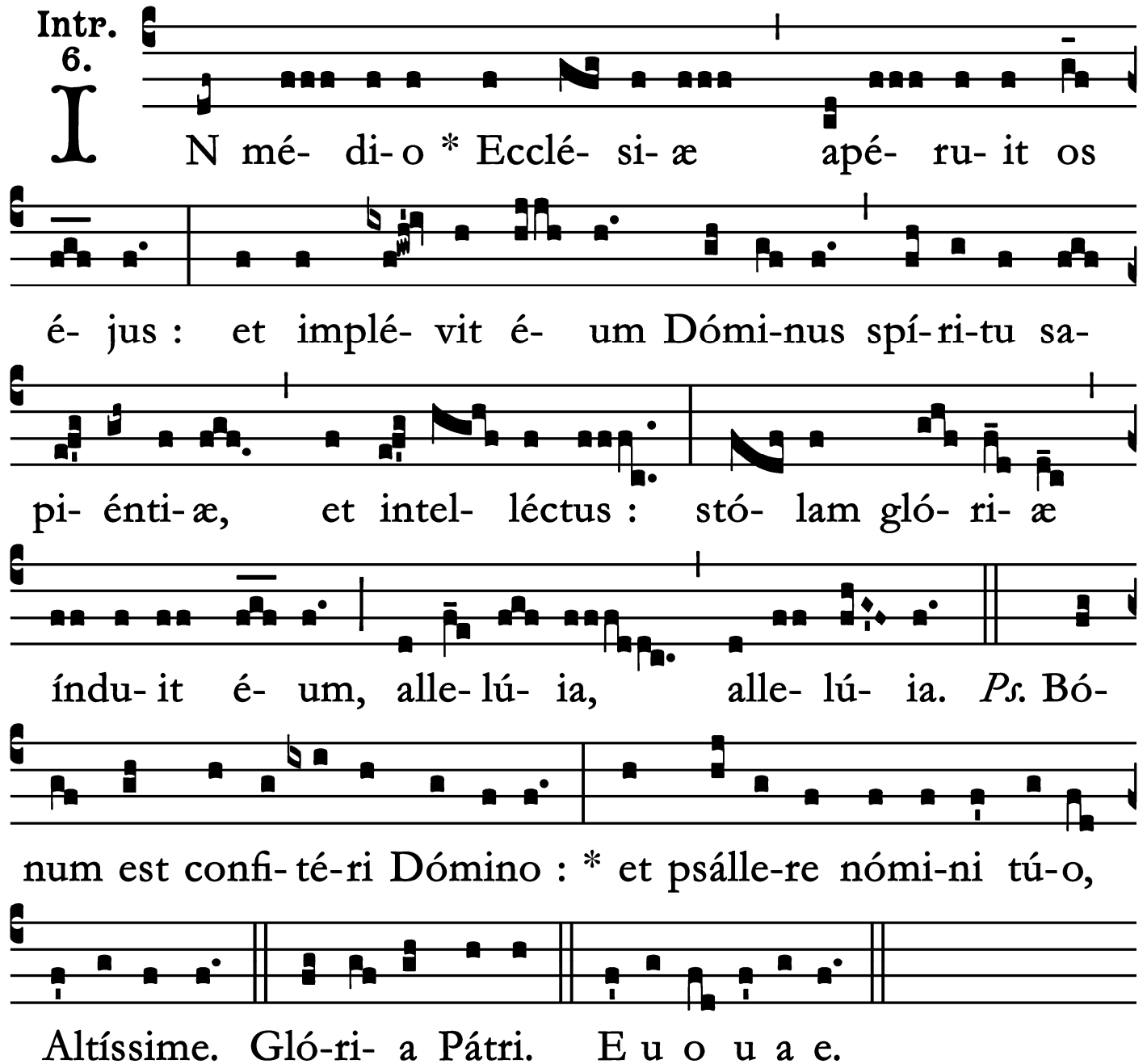


Introit

Intr. 6.



N mé- di- o * Ecclé- si- æ apé- ru- it os
é- jus : et implé- vit é- um Dómi- nus spí- ri- tu sa-
pi- énti- æ, et intel- léctus : stó- lam gló- ri- æ
índu- it é- um, alle- lú- ia, alle- lú- ia. *Ps.* Bó-
num est confi- té- ri Dómino : * et psálle- re nómi- ni tú- o,
Altíssime. Gló- ri- a Pátri. E u o u a e.

Alleluia

1.
A Lle- lú- ia. * *ij.*

Qui dó- cti fú- e-rint,

fulgé- bunt qua-

si splén- dor * fir- ma-

mén- ti.

St. Robert Bellarmine, Bishop, Confessor and Doctor – May 13

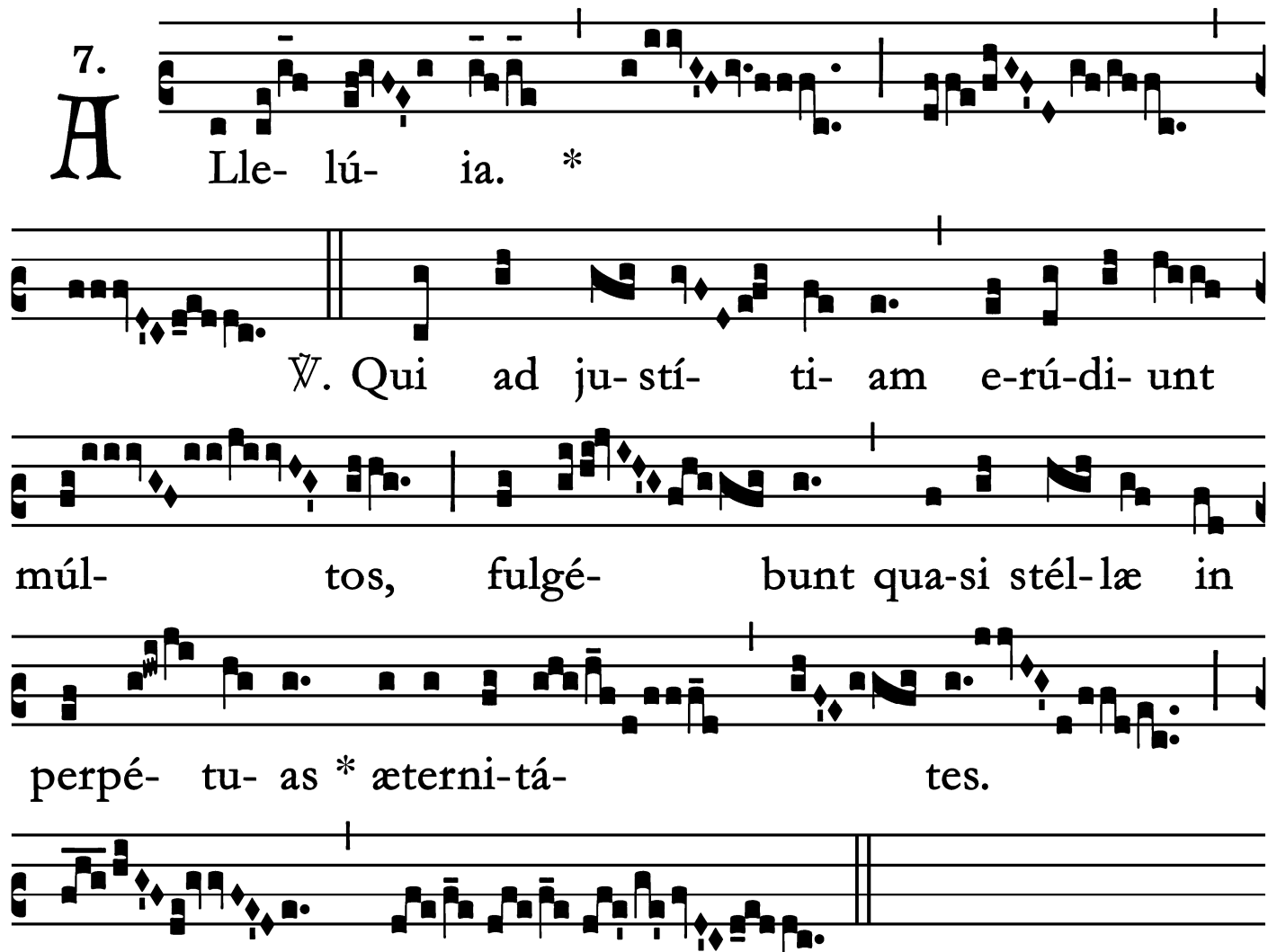
Second Alleluia

7.
A Lle- lú- ia. *

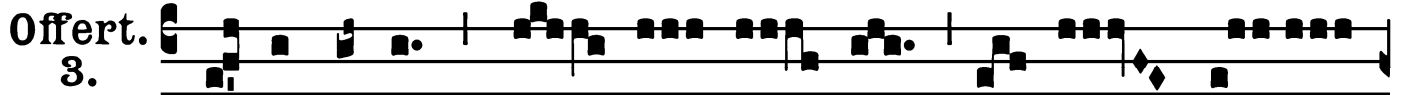
∇. Qui ad ju- stí- ti- am e-rú-di- unt

múl- tos, fulgé- bunt qua-si stél-læ in

perpé- tu- as * æterni-tá- tes.



Offertory

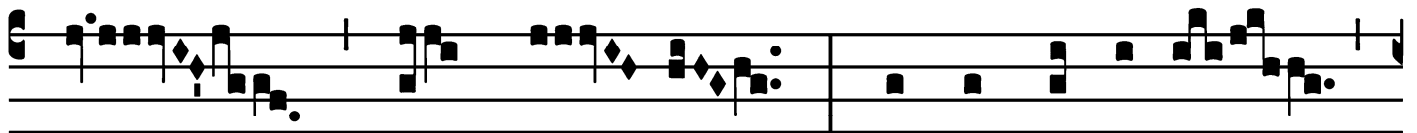


M

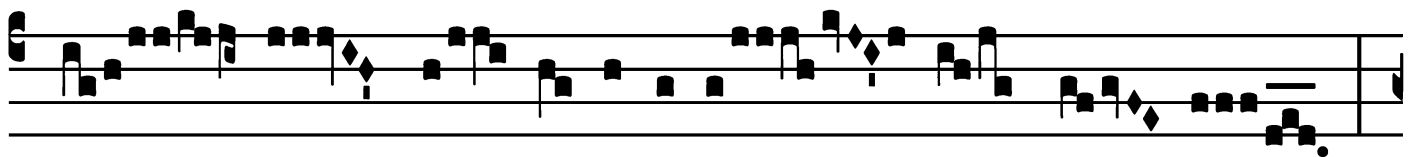
I-hi autem * ad- hæ- ré- re Dé- o bó-



num est, póne-re in Dómino Dé-



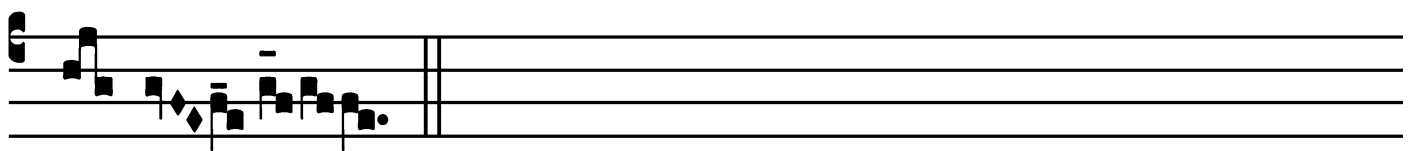
o spem mé- am : ut annúnti- em



ó- mnes præ- di-ca-ti-ó- nes tú- as



in pór- tis fí-li- æ Sí- on. Alle-



lú- ia.

Communion

Comm. 1.
V OS éstis lux mún-di : * sic lúce-at lux véstra coram

homí-nibus, ut víde-ant ópe-ra véstra bó-na, et glo-rí-

fi-cent Pátrem véstrum qui in cóe-lis est. Alle-

lú- ia.

