

Votive Mass of St. Thérèse of the Child Jesus, Virgin and Doctor

*Introit*

Intr.  
3.

**V**

Eni \* de Líba- no, spón- sa mé- a,

véni de Líba- no, vé- ni : vulne-rásti cor mé- um,

sóror mé- a spónsa, vulne-rá-sti cor mé- um.

*T. P.* Alle-lú-ia, alle- lú- ia. *Ps.* Laudá-te, pú- e-ri,

Dómi-num, \* laudá-te nó-men Dómi-ni. Gló-ri- a Pátri.

E u o u a e.

Votive Mass of St. Thérèse of the Child Jesus, Virgin and Doctor

*Gradual*

Grad.

5.

**G**

Onfí- te-or tí-bi, \* Pá- ter, Dó- mine có-li et

tér- ræ, qui- a abscondísti hæc a sapi-én-

ti- bus et prudén- ti-bus, et reve- lásti é- a

párvu- lis.  $\Psi$ . Dó- mine

spes mé- a a juventú-

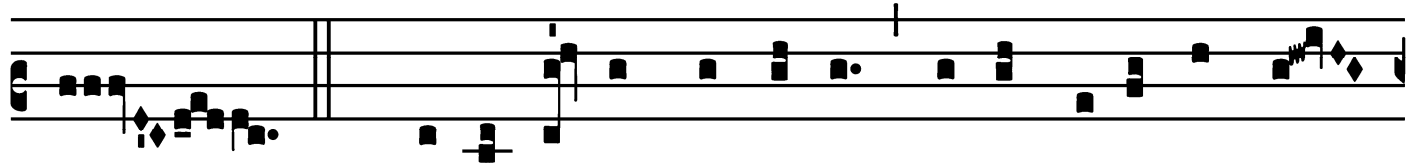
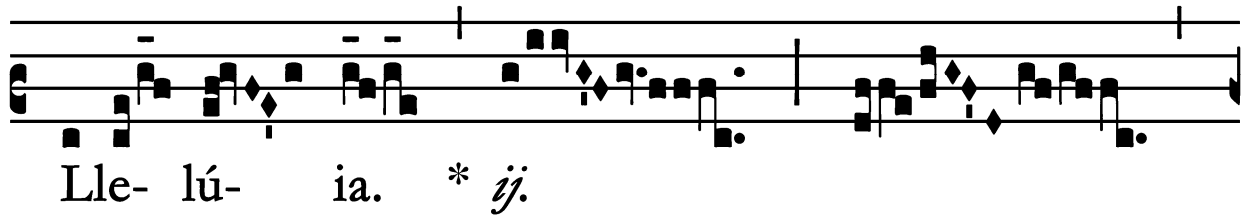
te \* mé- a.

Votive Mass of St. Thérèse of the Child Jesus, Virgin and Doctor

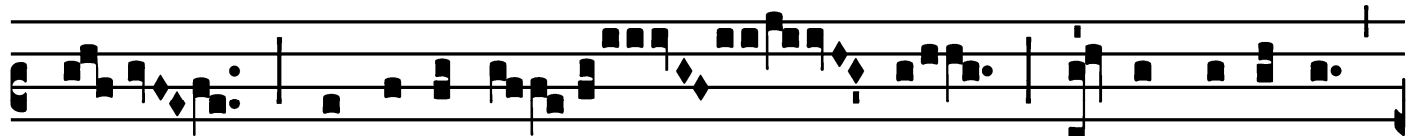
*Alleluia*

(Page 1 of 2)

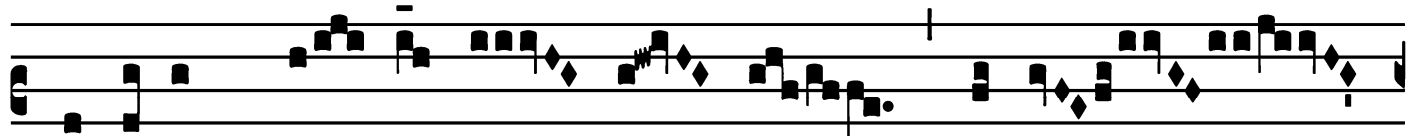
7.  
**A**



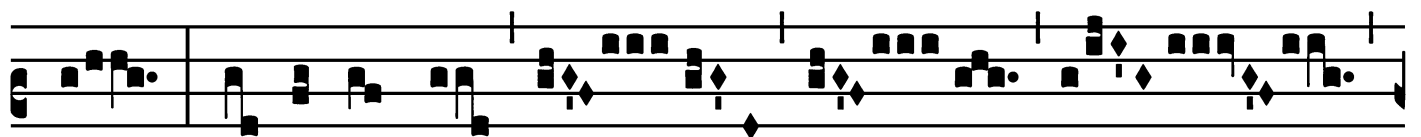
¶. Qua-si ró-sa plantá-ta super rívos aquá-



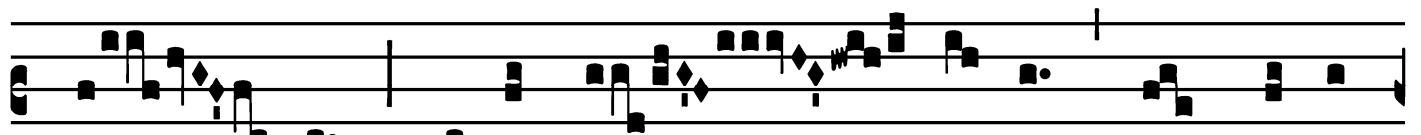
rum fructi-fi-cá- te : qua-si Líbanus



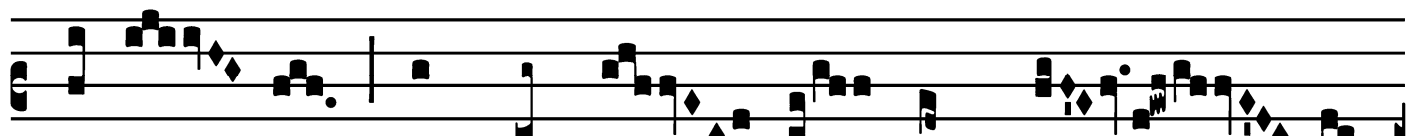
odórem su- a-vi- tá- tis habé-



te : flo-ré-te fló-



res, qua-si lí- li- um, et dá-te



odó- rem, et frondé- te in grá- ti-

Votive Mass of St. Thérèse of the Child Jesus, Virgin and Doctor

*Alleluia*

(Page 2 of 2)

am, et collaudá-te cán- ti- cum, et benedí-ci-te Dó-  
mi-num \* in opé- ri-bus  
sú- is.

Votive Mass of St. Thérèse of the Child Jesus, Virgin and Doctor

*Tract*

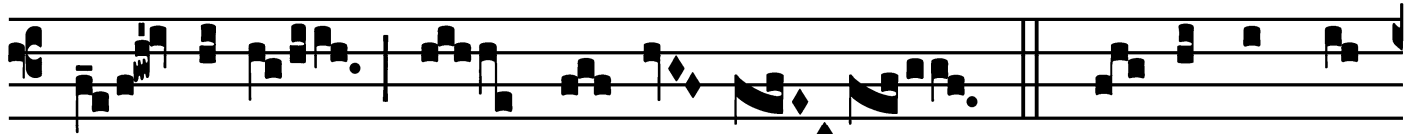
Tract.

2.

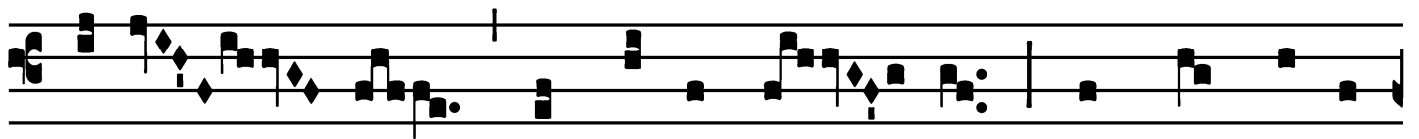
**J**



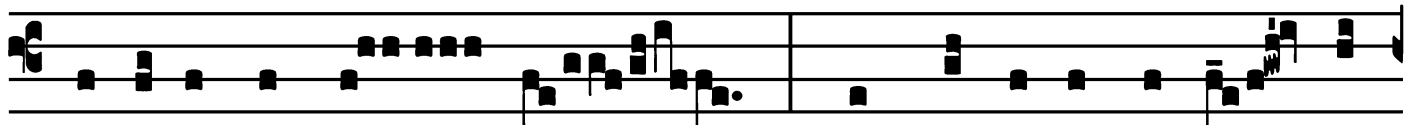
AM hí- ems \* tráns- i- it, ímber



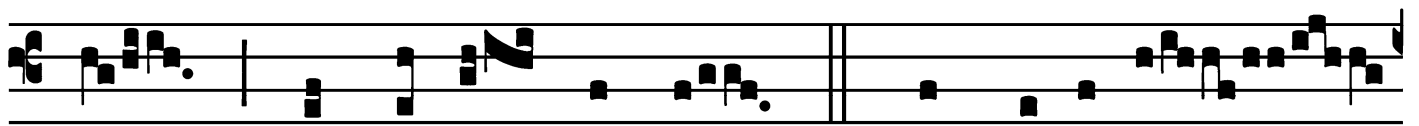
áb- i- it, et re- cés- sit.  $\nabla$ . Fló- res appa-



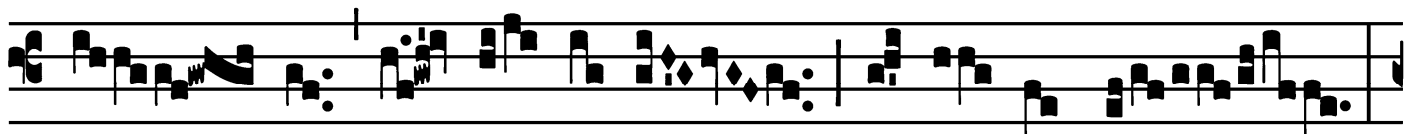
ru- é- runt in térra nó- stra, témpus pu-ta-



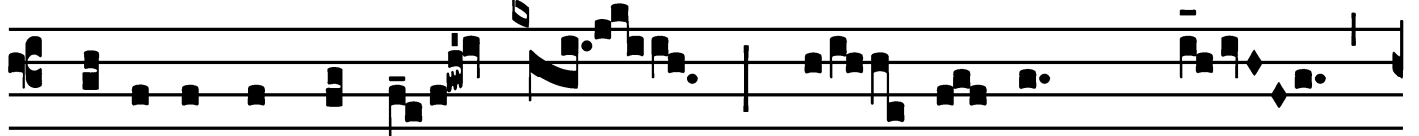
ti- ónis advé- nit : vox túrtu- ris audí- ta



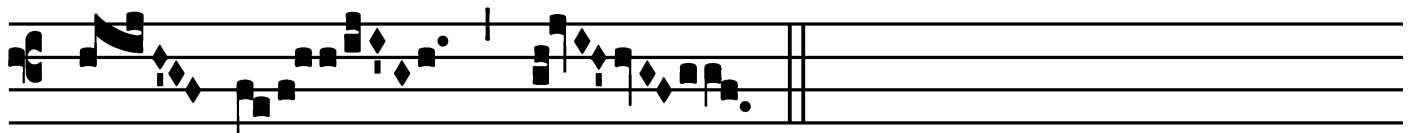
est in térra nóstra.  $\nabla$ . In ca- ri- tá-



te per- pé- tu- a di- lé- xi te :



íde- o attrá- xi te, mí- se- rans \* tú-

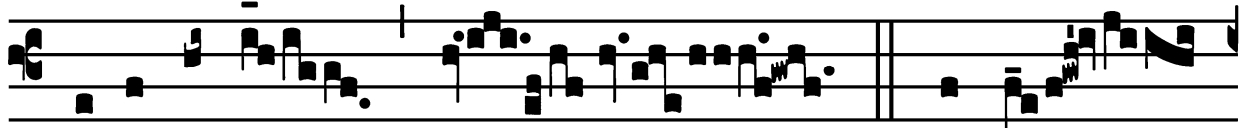


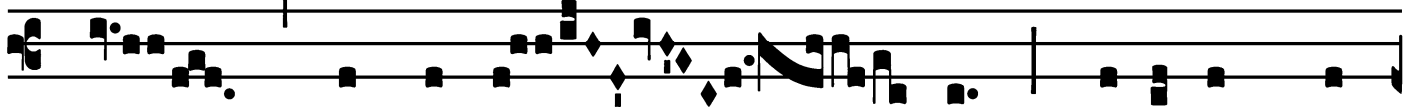
i.

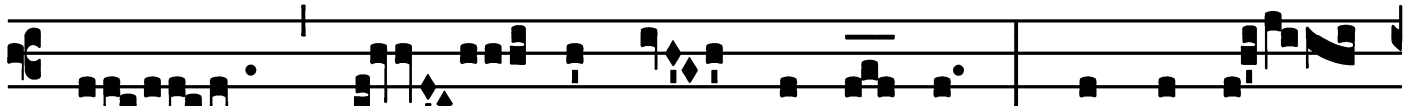
Votive Mass of St. Thérèse of the Child Jesus, Virgin and Doctor


*Second Alleluia*

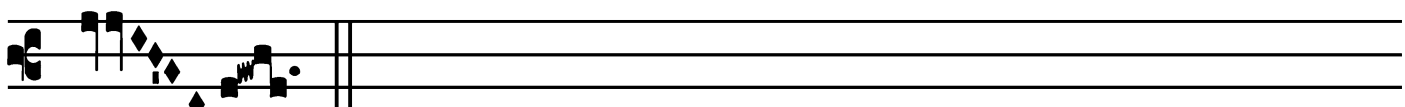
(In Paschal Time)

2.  
**A**  Lle-lú-ia. \* *Ÿ.* Gustá-

 te, et vi-dé- te quóni- am su-

 á- vis est Dómi- nus : in æ-tér-

 num mi-se-ri-cór- di- a \* é-

 jus.

Votive Mass of St. Thérèse of the Child Jesus, Virgin and Doctor

# Offertory

Offert. 1.



**M** Agní- ficat \* á- nima mé- a Dó- mi-num :  
et exsul- tá- vit spí- ri- tus mé- us in Dé- o sa- lu- tá-  
ri mé- o : qui- a re-  
spé- xit humi- li- tá- tem ancíl- læ sú- æ, fé- cit  
mí- hi má- gna qui pót- ens est.  
T. P. Alle- lú- ia.

Votive Mass of St. Thérèse of the Child Jesus, Virgin and Doctor

*Communion*

Comm.

7.

**C**

Ircum dú- xit é- am, \* et dó- cu- it et custo-

dí- vit qua- si pupíl- lam ócu- li sú- i. Sic- ut áqui- la

expándit á- las sú- as, et assúm- psit é- am, atque

portá- vit in húme- ris sú- is. Dó- mi- nus só- lus dux

é- jus fú- it. *T.P.* Al- le- lú- ia.

