

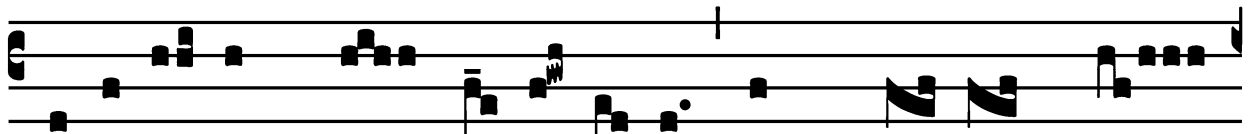
Votive Mass of the Immaculate Heart of Mary

Introit

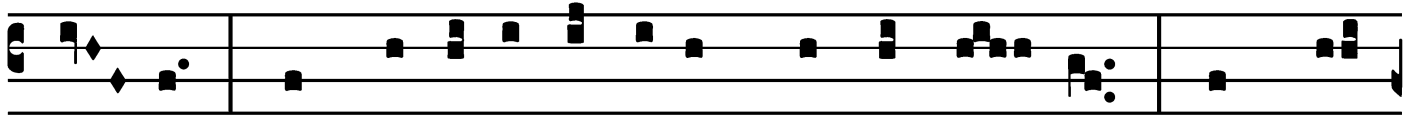
Intr.

5.

A



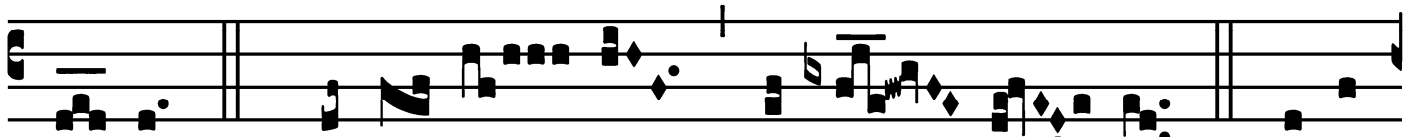
D-e-á-mus * cum fi-dú-ci-a ad thró-num grá-



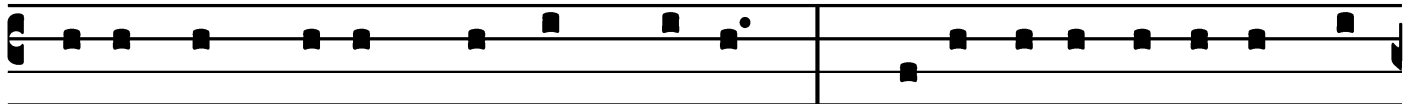
ti-æ, ut mi-se-ri-córdi-am consequá-mur, et grá-



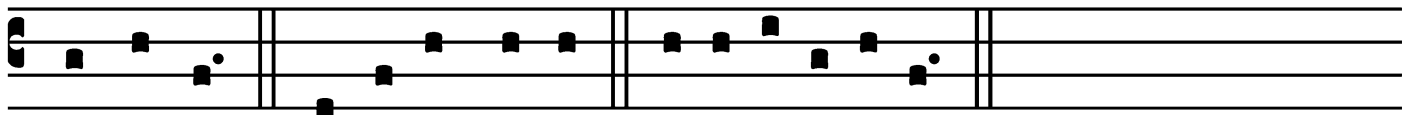
ti-am inveni-á-mus in au-xí-li-o op-por-



tú-no. *T. P.* Alle-lú-ia, al-le-lú-ia. *Ps.* Eru-



ctávit cor mé-um vérbum bónum : * díco égo ópe-ra mé-



a ré-gi. Gló-ri-a Pátri. E u o u a e.

Votive Mass of the Immaculate Heart of Mary

Gradual

(Page 1 of 2)

Grad.

2.

✠

Xsultá- bit * cor mé- um in sa- lu- tá- ri

tú- o : cantábo Dó- mino, qui bóna trí-

bu- it mí- hi : et psál-

lam nómi- ni Dómi- ni altís- simi.

∇. Mémoires éront nómi- nis tú-

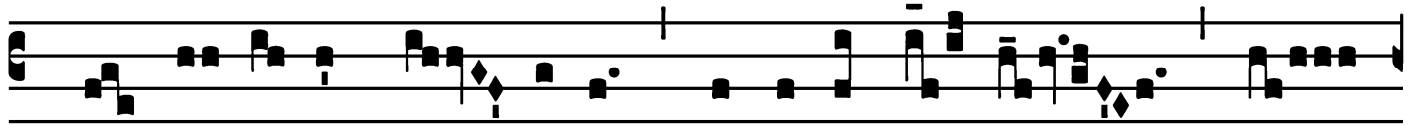
i in ó- mni genera-

ti- óne et gene- ra- ti- ó- nem :

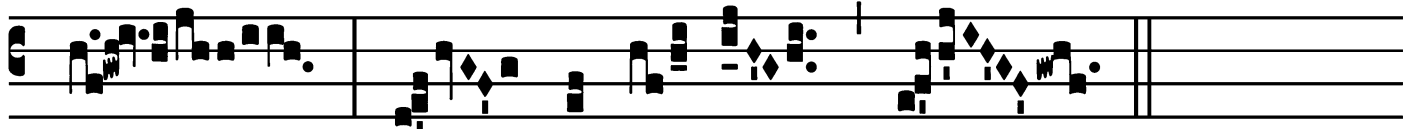
Votive Mass of the Immaculate Heart of Mary

Gradual

(Page 2 of 2)



pro-ptér- e- a pó- pu-li confi-te-bún-tur tí-



bi * in æ-tér-num.

Votive Mass of the Immaculate Heart of Mary

Alleluia

6.
A Lle- lú- ia. * *ij.*

Ÿ. Magní-fi- cat á-nima mé-

a Dó- mi- num : et exsul-

tá- vit spí-ri-

tus mé- us in Dé- o * sa- lu- tá- ri

mé- o.

Votive Mass of the Immaculate Heart of Mary

Second Alleluia

3.
A L-le-lú- ia. *

∞. Be- á-tam me dí- cent ómnes gene-ra- ti-
ó- nes, qui- a ancíl-lam húmi- lem
respé-
xit * Dé- us.

Votive Mass of the Immaculate Heart of Mary

Tract

(Page 1 of 2)

Tract.

8.

N

Unc er- go, * fí- li- i, audí- te me :

Be-á-ti, qui custódi-unt ví-as mé- as.

∇. Audí- te disciplínam, et estóte sa- pi-én- tes, et

no-lí-te ab-jí-ce-re é- am. ∇. Be-á-tus hó-

mo qui áu- dit me, et qui ví-

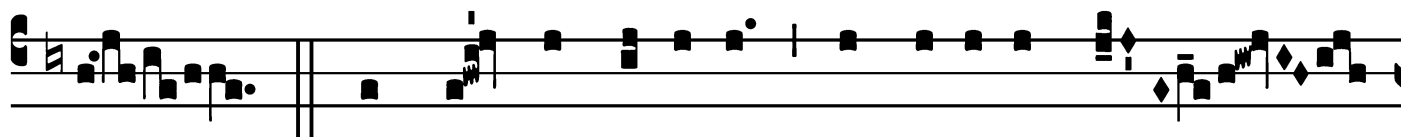
gi- lat ad fóres mé-as quo- tí-di- e, et ob-

sér- vat ad póstes ó- sti- i mé- i.

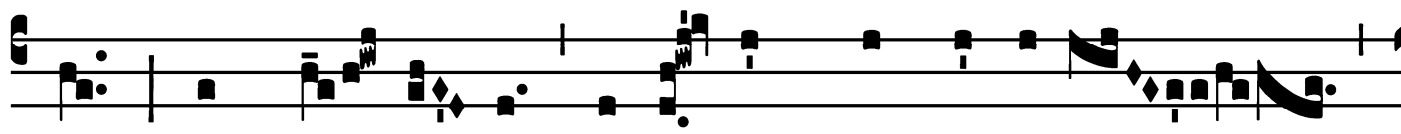
Votive Mass of the Immaculate Heart of Mary

Tract

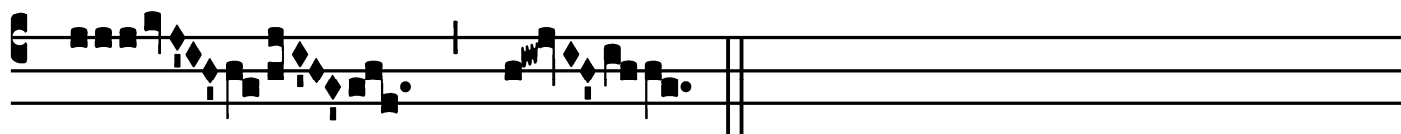
(Page 2 of 2)



Ÿ. Qui me invéne-rit, invéni-et ví-



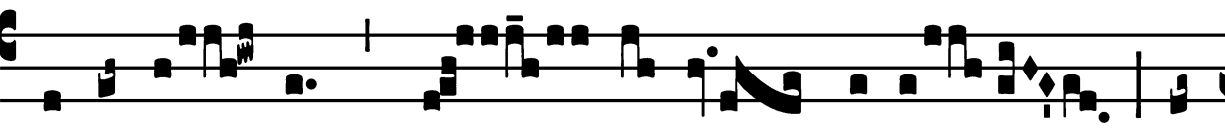
tam, et háu-ri-et sa-lú-tem * a Dómino.



Votive Mass of the Immaculate Heart of Mary

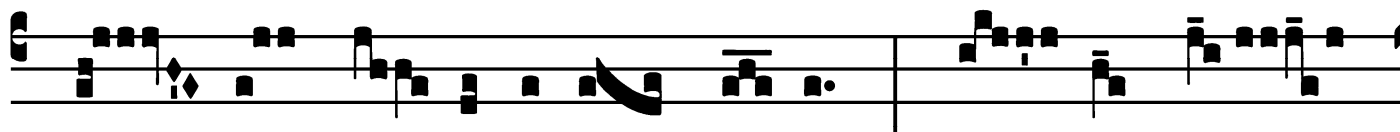
Offertory

Offert.
8.

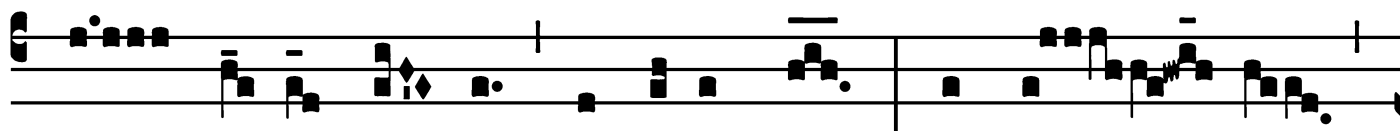


E

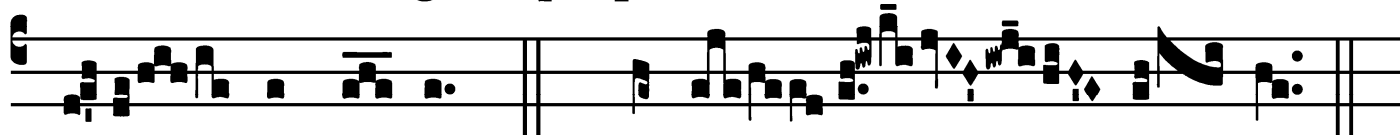
Xsultá- vit * spí- ri- tus mé- us in



Dé- o sa- lu- tá- ri mé- o : qui- a fé-



cit mí- hi má- gna qui pótens est, et sán- ctum



nó- men é- jus. *T.P.* Alle- lú- ia.

Votive Mass of the Immaculate Heart of Mary

Communion

Comm. 8.

D

I- xit Jésus mátri sú- æ : * Mú-li- er, ec-ce fí-li- us

tú- us; de- ín-de dí-xit discípu- lo : Ec-ce má-ter tú- a.

Et ex ílla hó-ra accépit é-am discípu-lus in sú- a.

T.P. Alle- lú- ia.

