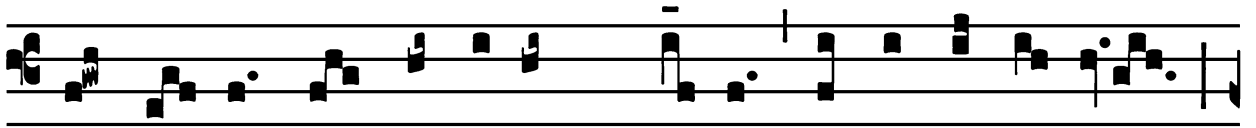


Introit

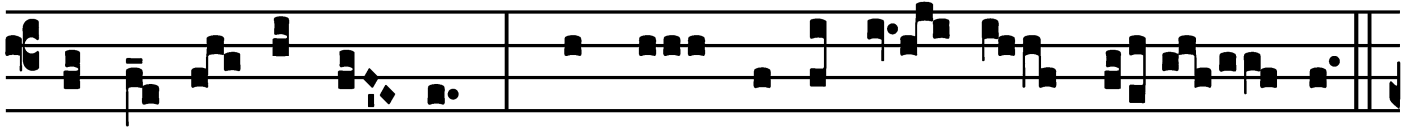
Intr.

2.

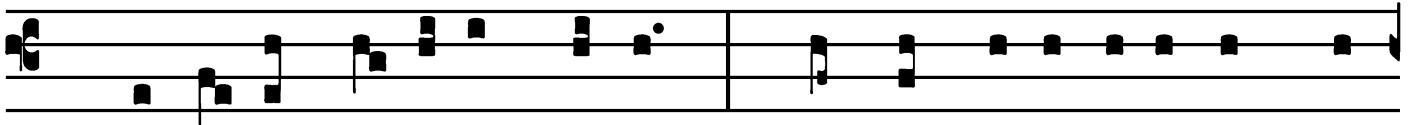
G



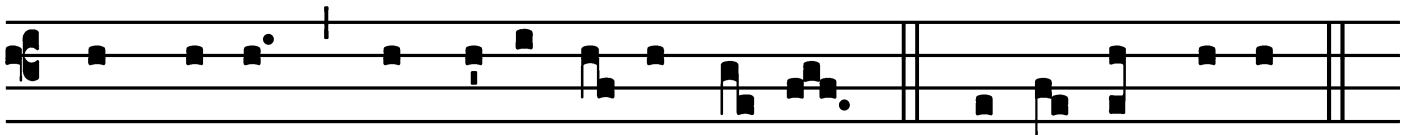
X ó-re * in-fánti-um, Dé-us, et lacténti-um



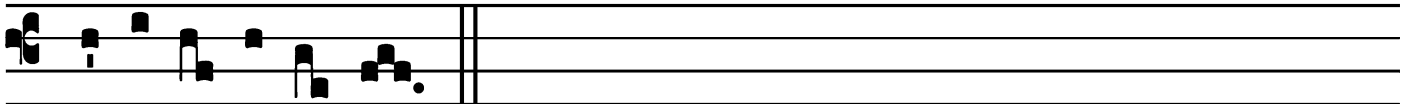
perfe-cí-sti láu-dem propter in-imí-cos tú-os.



Ps. Dómi-ne Dóminus nóster : * quam admi-rá-bi-le est nó-



men tú-um in uni-vér-sa térra! Gló-ri-a Pátri.



E u o u a e.

Gradual

Grad.

5.

A

- nima nó-stra, * sicut pás-ser,

e-répta est de láque-o ve-nán-ti-um.

∇. Láque-us

contrí-tus est, et nos libe-rá-

ti sú-mus : ad-jutó-ri-um nostrum

in nómine Dó-mi-ni, qui fé-cit cé-lum

* et tér-ram.

Alleluia

4.
A L- le-lú- ia. * *ij.* *Ÿ.* Laudá-
te pú- e-ri Dóminum, laudá- te
nómen * Dómi- ni.

Tract

Tract.

8.

E

F-fudé- runt * sánguinem san-

ctó- rum, vel-ut á- quam, in circú- i- tu Je- rúsa- lem.

∇. Et non é- rat

qui se- pe- lí- ret.

∇. Víndi- ca, Dó- mi- ne, sánguinem sanctó- rum

tu- ó- rum, qui effú- sus

est * su- per tér- ram.

Communion

Comm.

7.

V

OX in Ráma * audí-ta est, plorá- tus et u-lu-lá-

tus : Ráchel pló- rans fí-li- os sú- os, nó- lu- it con-so-

lá-ri, qui- a non sunt.

